

MIRAI MR10-01 Leg1 Sediment trap data

Last Modified: 2012-09-28

[ReadMe](#) [Observation Data](#)

Cruise ID: [MR10-01 Leg1](#)

Sediment trap data: Processed (PI)

Data Policy: [JAMSTEC](#)

Observation Items:

Science Keywords:

Data Information

Results of chemical analysis on sinking particles collected by Drifting sediment traps at 60, 100, 150 and 200 m of time-series stations K2 and S1.

Cruise Report

http://www.godac.jamstec.go.jp/catalog/data/doc_catalog/media/MR10-01_leg1-2_all.pdf

For Using Data

Principal Investigator

Kazuhiko Matsumoto (JAMSTEC)

Use Constraints

Please contact PI (Hajime Kawakami, kawakami@jamstec.go.jp)

Data Citation

Please contact PI (Hajime Kawakami, kawakami@jamstec.go.jp)

Instrument

Instrument:

chemical analysis : Inductively
Coupled Plasma-Atomic Emission
Spectrometry (ICP-AES)

Instrument Information:

Inductively Coupled Plasma-Atomic
Emission Spectrometry (ICP-AES):
Perkin-Elmer Optima 3300DV.

Instrument:

chemical analysis : elemental analyzer

Instrument Information:

elemental analyzer (Parkin-Elmer
2400)

Instrument:

Particle collector : drifting sediment
trap

Instrument Information:

drifting sediment trap. (Knauer type)
Detail is written elsewhere(Cruise
Report 3.5 Drifting sediment trap p.
126)



Sample

Sinking particle

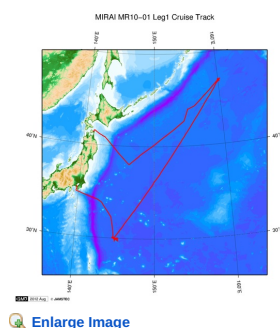
Sample ID

K02DST-P01, S01DST-P01, S01DST-P02

Data Format

Excell file

Related Information



MR10-01 Leg1

Ship Name: MIRAI

Period: 2010-01-19 - 2010-02-06

Chief Scientist: Kazuhiko Matsumoto (JAMSTEC)

Project Name: [Station K2, Station S1, Station KEO, Station KNOT]

Proposal ▶ Change in material cycles and ecosystem by the climate change and its feed back

Title:

Update History

2012-09-28 An observation data was registered.

JAMSTEC

[Site Policy](#)
[Privacy Policy](#)
[Application for Data and Samples](#)
[Data Policy](#)

[What's New](#)
[Update History](#)
[Feeds](#)

Lists

[Publication List](#)
[Amount of Public Info.](#)

Data

[Map Search](#)
[Data Tree](#)
[Detailed Search](#)

Information of the Ships

[NATSUSHIMA](#)
[KAIYO](#)
[YOKOSUKA](#)
[MIRAI](#)
[KAIREI](#)
[CHIKYU](#)
[KAIMEI](#)
[SHINSEI MARU](#)

Information of the Submersibles

[KAIKO](#)
[SHINKAI 2000](#)
[SHINKAI 6500](#)
[DEEP TOW](#)
[HYPER-DOLPHIN](#)
[URASHIMA](#)
[YOKOSUKA DEEP TOW](#)

Go to a Cruise Information

Cruise ID:

Go to a Dive Information

Dive ID:

HAKUHO MARU

6K Camera DEEP TOW
6K Sonar DEEP TOW
KM-ROV
POWER GRAB SAMPLER
(SHELL)
POWER GRAB SAMPLER
(CLOW)
BMS

Copyright 2011 Japan Agency for Marine-Earth Science and
Technology



JAMSTEC 国立研究開発法人
海洋研究開発機構
JAPAN AGENCY FOR MARINE-EARTH SCIENCE AND TECHNOLOGY

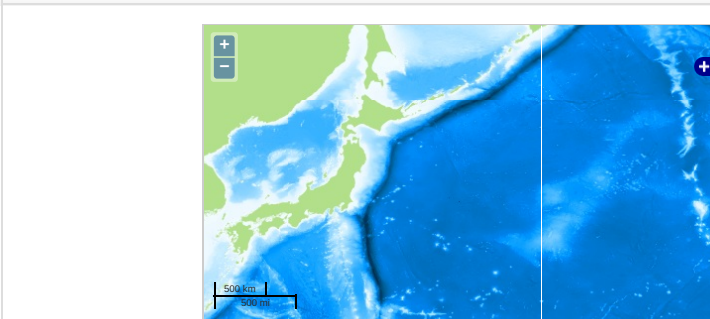
MIRAI MR10-01 Leg1 Sediment trap data

Last Modified: 2012-09-28

[ReadMe](#) [Observation Data](#)

Cruise ID: [MR10-01 Leg1](#)
Sediment trap data: Processed (PI)
Data Policy: [JAMSTEC](#)
Observation Items:
Science Keywords:

Observation Map



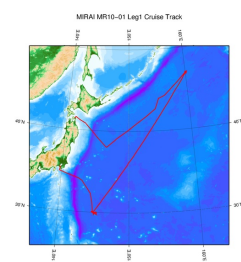
... Observation Line ... Navigation ... Observation, Dive Point, Hole

Data List

File names

☐ MR10-01_dst.zip

Related Information



[Enlarge Image](#)

MR10-01 Leg1

Ship Name: MIRAI
Period: 2010-01-19 - 2010-02-06
Chief Scientist: Kazuhiko Matsumoto (JAMSTEC)
Project Name: [Station K2, Station S1, Station KEO, Station KNOT]
Proposal: ▶ Change in material cycles and ecosystem by the climate change and its feed back
Title:

Update History

2012-09-28 An observation data was registered.

JAMSTEC

[Site Policy](#)
[Privacy Policy](#)
[Application for Data and Samples](#)
[Data Policy](#)

[What's New](#)
[Update History](#)
[Feeds](#)

[Lists](#)
[Publication List](#)
[Amount of Public Info.](#)

[Data](#)
[Map Search](#)
[Data Tree](#)
[Detailed Search](#)

Information of the Ships

[NATSUSHIMA](#)
[KAIYO](#)
[YOKOSUKA](#)
[MIRAI](#)
[KAIREI](#)
[CHIKYU](#)
[KAIMEI](#)
[SHINSEI MARU](#)
[HAKUHO MARU](#)

Information of the Submersibles

[KAIKO](#)
[SHINKAI 2000](#)
[SHINKAI 6500](#)
[DEEP TOW](#)
[HYPER-DOLPHIN](#)
[URASHIMA](#)
[YOKOSUKA DEEP TOW](#)
[6K Camera DEEP TOW](#)
[6K Sonar DEEP TOW](#)
[KM-ROV](#)
[POWER GRAB SAMPLER \(SHELL\)](#)
[POWER GRAB SAMPLER \(CLOW\)](#)
[BMS](#)

Go to a Cruise Information

Cruise ID:

Go to a Dive Information

Dive ID: