

## MIRAI MR17-05C Lowered Acoustic Doppler Current Profiler (LADCP) Data

Last Modified: 2019-09-17

[ReadMe](#) [Observation Data](#)

Cruise ID: [MR17-05C](#)

Lowered Acoustic Doppler Current Profiler (LADCP) Data : Processed (PI)

Data Policy: [JAMSTEC](#)

Observation Items:

Science Keywords:

### Data Information

Lowered Acoustic Doppler Current Profiler (LADCP) obtains horizontal current velocity at constant vertical interval of 8 m. The data in public are already processed with the LDEO software (Visbeck,2002). See the header for meta information such as start time and position of LADCP observation.

LADCP data:

depth (m)

zonal velocity (m/s)

meridional velocity (m/s)

error velocity (m/s)

### Cruise Report

[http://www.godac.jamstec.go.jp/catalog/data/doc\\_catalog/media/MR17-05C\\_all.pdf](http://www.godac.jamstec.go.jp/catalog/data/doc_catalog/media/MR17-05C_all.pdf)

### For Using Data

#### Principal Investigator

Yusuke Kawaguchi (AORI, U. Tokyo)

#### Use Constraints

See [Terms and Conditions](#) about constrain of use.

#### Data Citation

Nishino, S., 2017, R/V Mirai Cruise Report MR17-05C, 209pp., JAMSTEC, Yokosuka, Japan.

Upon consultation in advance with the chief of investigation and the person(s) in charge of research issues who gathered that data, we request that the text of the results material contain a statement to the effect that it was obtained during the R/V Mirai cruise of MR17-05C, the Chief Scientist, Shigeto Nishino (JAMSTEC), and the following Principal Investigators (PIs) for gathering the data.

Chief Scientist

Shigeto Nishino

Japan Agency for Marine - Earth Science and Technology (JAMSTEC)

2-15 Natsushima, Yokosuka, Kanagawa 237-0061, Japan

Tel: +81-46-867-9487, Fax: +81-46-867-9437

E-mail: [nishinos@jamstec.go.jp](mailto:nishinos@jamstec.go.jp)

PI

Yusuke Kawaguchi

Department of Physical Oceanography,

Atmosphere and Ocean Research Institute,

The University of Tokyo

Tel: 047-136-6047, Fax: 047-136-6056

E-mail: [ykawaguchi@aori.u-tokyo.ac.jp](mailto:ykawaguchi@aori.u-tokyo.ac.jp)

Please also mention that this cruise was conducted under the Arctic Challenge for Sustainability (ArCS) Project, which was funded by the Ministry of Education, Culture, Sports, Science and Technology of Japan (MEXT).

### Instrument

Instrument:

RDI 300kHz Work Horse Sentinel

Instrument Information:

A couple of LADCPs are attached to a

CTD frame, with either of them looking

downward or upward. The raw data are

processed with LDEO software

(Visbeck 2002).



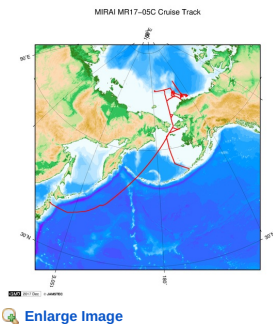
### Data Format

File name:

L\*\*\*M\*\*\*.lad (\*\*\* represents station and cast numbers)

e.g. 1st cast at Stn. 70 is indicated as L070M001.lad

### Related Information



#### MR17-05C

Ship Name: MIRAI  
Period: 2017-08-24 - 2017-10-01  
Chief Scientist: Shigeto Nishino (JAMSTEC)  
Project Name: [Arctic Ocean Climate System Reaserch]  
Proposal ▶ Arctic Challenge for Sustainability (ArCS)  
Title:

#### Update History

2019-09-17	An observation data was registerd.
------------	------------------------------------

#### JAMSTEC

Site Policy  
Privacy Policy  
Application for Data and Samples  
Data Policy

What's New  
Update History  
Feeds

#### Lists

Publication List  
Amount of Public Info.

#### Data

Map Search  
Data Tree  
Detailed Search

#### Information of the Ships

NATSUSHIMA  
KAIYO  
YOKOSUKA  
MIRAI  
KAIREI  
CHIKYU  
KAIMEI  
SHINSEI MARU  
HAKUHO MARU

#### Information of the Submersibles

KAIKO  
SHINKAI 2000  
SHINKAI 6500  
DEEP TOW  
HYPER-DOLPHIN  
URASHIMA  
YOKOSUKA DEEP TOW  
6K Camera DEEP TOW  
6K Sonar DEEP TOW  
KM-ROV  
POWER GRAB SAMPLER (SHELL)  
POWER GRAB SAMPLER (CLOW)  
BMS

#### Go to a Cruise Information

Cruise ID:

#### Go to a Dive Information

Dive ID:

Copyright 2011 Japan Agency for Marine-Earth Science and Technology



**JAMSTEC** 国立研究開発法人  
海洋研究開発機構  
JAPAN AGENCY FOR MARINE-EARTH SCIENCE AND TECHNOLOGY

## MIRAI MR17-05C Lowered Acoustic Doppler Current Profiler (LADCP) Data

Last Modified: 2019-09-17

[ReadMe](#) [Observation Data](#)

Cruise ID: [MR17-05C](#)

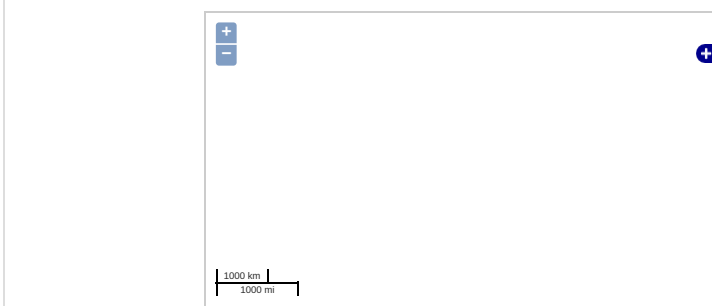
Lowered Acoustic Doppler Current Profiler (LADCP) Data: Processed (PI)

Data Policy: [JAMSTEC](#)

Observation Items:

Science Keywords:

### Observation Map



Imagery reproduced from ...

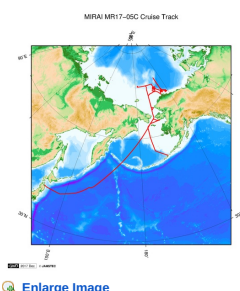
... Observation Line ... Navigation ... Observation, Dive Point, Hole

### Data List

#### File names

☐ ladcp.zip

### Related Information



[Enlarge Image](#)

#### MR17-05C

Ship Name: MIRAI

Period: 2017-08-24 - 2017-10-01

Chief Scientist: Shigeto Nishino (JAMSTEC)

Project Name: [Arctic Ocean Climate System Research]

Proposal ▶ Arctic Challenge for Sustainability (ArCS)

Title:

### Update History

2019-09-17

An observation data was registered.

#### JAMSTEC

[Site Policy](#)

[Privacy Policy](#)

[Application for Data and Samples](#)

[Data Policy](#)

#### What's New

[Update History](#)

[Feeds](#)

#### Lists

[Publication List](#)

[Amount of Public Info.](#)

#### Data

[Map Search](#)

[Data Tree](#)

[Detailed Search](#)

#### Information of the Ships

[NATSUSHIMA](#)

[KAIYO](#)

[YOKOSUKA](#)

[MIRAI](#)

[KAIREI](#)

[CHIKYU](#)

[KAIMEI](#)

[SHINSEI MARU](#)

[HAKUHO MARU](#)

#### Information of the Submersibles

[KAIKO](#)

[SHINKAI 2000](#)

[SHINKAI 6500](#)

[DEEP TOW](#)

[HYPER-DOLPHIN](#)

[URASHIMA](#)

[YOKOSUKA DEEP TOW](#)

[6K Camera DEEP TOW](#)

[6K Sonar DEEP TOW](#)

[KM-ROV](#)

[POWER GRAB SAMPLER \(SHELL\)](#)

[POWER GRAB SAMPLER \(CLOW\)](#)

[BMS](#)

#### Go to a Cruise Information

Cruise ID:

#### Go to a Dive Information

Dive ID:

