

## KAIMEI KM17-06C Precipitable water vapor (GNSS water vapor)

Last Modified: 2018-03-30

[ReadMe](#) [Observation Data](#) [Data Format](#)

Cruise ID: **KM17-06C**

Precipitable water vapor (GNSS water vapor): Processed (DMO)-Corrected

Data Policy: [JAMSTEC](#)

Observation Items: Precipitable water vapor (GNSS water vapor)

Science Keywords:

ATMOSPHERE > ATMOSPHERIC WATER VAPOR > WATER VAPOR

Cruise Report

[http://www.godac.jamstec.go.jp/catalog/data/doc\\_catalog/media/KM17-06C\\_all.pdf](http://www.godac.jamstec.go.jp/catalog/data/doc_catalog/media/KM17-06C_all.pdf)

### For Using Data

**Principal Investigator**

Data Management Office

**Use Constraints**

See [Terms and Conditions](#) about constrain of use.

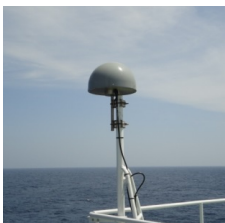
**Data Citation**

See [Terms and Conditions](#) about data citation.

### Instrument

Instrument:

GPS water vapor observation system



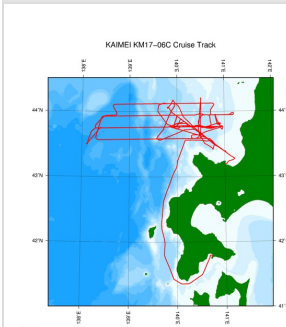
### Overview

The data provided here is precipitable water vapor (column water vapor) estimated from GNSS observation on R/V KAIMEI. See [here](#) for detailed processing methods.

### Measurement System

GNSS receiver [model/manufacturer]:	NetR9 Ti-1/Trimble
GNSS antenna [model/manufacturer]:	GNSS-Ti Choke Ring Antenna with radome/Trimble
Antenna location:	compass deck (18 meters high from sea surface)
Received satellite:	GPS, GLONASS, QZSS
Sampling interval:	30 sec
Elevation mask:	5 degrees (However, set to 10 degrees in the data processing provided here)

### Related Information



[Enlarge Image](#)

#### KM17-06C

Ship Name: KAIMEI

Period: 2017-06-22 - 2017-07-10

Chief Scientist: Tetsuo No (JAMSTEC)

Proposal Integrated Research Project on Seismic and Tsunami Hazards Around the Sea of Japan

Title:

### Update History

2018-03-30	An observation data was registerd.
2018-02-09	An observation data was registerd.

**JAMSTEC**  
Site Policy  
Privacy Policy  
Application for Data and Samples  
Data Policy  
**What's New**  
Update History  
Feeds

**Lists**  
Publication List  
Amount of Public Info.  
**Data**  
Map Search  
Data Tree  
Detailed Search

**Information of the Ships**  
NATSUSHIMA  
KAIYO  
YOKOSUKA  
MIRAI  
KAIREI  
CHIKYU  
KAIMEI  
SHINSEI MARU  
HAKUHO MARU

**Information of the Submersibles**  
KAIKO  
SHINKAI 2000  
SHINKAI 6500  
DEEP TOW  
HYPER-DOLPHIN  
URASHIMA  
YOKOSUKA DEEP TOW  
6K Camera DEEP TOW  
6K Sonar DEEP TOW  
KM-ROV

**Go to a Cruise Information**

Cruise ID:

**Go to a Dive Information**

Dive ID:

POWER GRAB SAMPLER  
(SHELL)  
POWER GRAB SAMPLER  
(CLOW)  
BMS

Copyright 2011 Japan Agency for Marine-Earth Science and  
Technology



**JAMSTEC** 国立研究開発法人  
海洋研究開発機構  
JAPAN AGENCY FOR MARINE-EARTH SCIENCE AND TECHNOLOGY

## KAIMEI KM17-06C Precipitable water vapor (GNSS water vapor)

Last Modified: 2018-03-30

[ReadMe](#) [Observation Data](#) [Data Format](#)

Cruise ID: **KM17-06C**

Precipitable water vapor (GNSS water vapor) Processed (DMO)-Corrected

Data Policy: [JAMSTEC](#)

### Precipitable water vapor (GNSS water vapor)

Single space separated.

No.	Column	Content	Unit	Format (nodata or baddata)	Remarks
1	1-8	Date [YYYYMMDD]		i8	Every 10 minutes* * Time stamp is set at the end of average
2	10-13	Time [hhmm]		i4	Every 10 minutes*
3	15-24	Longitude [-180 to 180]	degree	f10.5 (999.99999)	Location at time stamp +:East longitude -:West longitude
4	26-34	Latitude [-90 to 90]	degree	f9.5 (999.99999)	Location at time stamp +:North latitude -:South latitude
5	36-41	Precipitable water vapor (column water vapor)	mm	f6.2 (999.99)	10-minute mean*

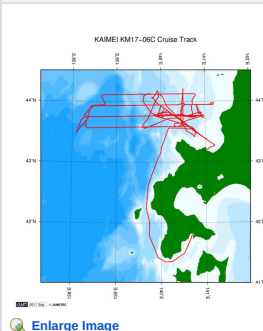
Data Example

```

YYYYMMDD hhmm Lon Lat PWV
20170422 0030 130.92555 33.93327 15.15
20170422 0040 130.93252 33.94054 15.20
20170422 0050 130.95647 33.95871 15.28
20170422 0100 130.99144 33.97308 15.47

```

### Related Information



[Enlarge Image](#)

#### KM17-06C

Ship Name: KAIMEI

Period: 2017-06-22 - 2017-07-10

Chief Scientist: Tetsuo No (JAMSTEC)

Proposal Integrated Research Project on Seismic and Tsunami Hazards Around the Sea of Japan

Title:

### Update History

2018-03-30	An observation data was registered.
2018-02-09	An observation data was registered.

#### JAMSTEC

[Site Policy](#)  
[Privacy Policy](#)  
[Application for Data and Samples](#)  
[Data Policy](#)  
[What's New](#)  
[Update History](#)  
[Feeds](#)

#### Lists

[Publication List](#)  
[Amount of Public Info.](#)  
  
[Data](#)  
[Map Search](#)  
[Data Tree](#)  
[Detailed Search](#)

#### Information of the Ships

NATSUSHIMA  
KAIYO  
YOKOSUKA  
MIRAI  
KAIMEI  
CHIKYU  
KAIMEI  
SHINSEI MARU  
HAKUHO MARU

#### Information of the Submersibles

KAIKO  
SHINKAI 2000  
SHINKAI 6500  
DEEP TOW  
HYPER-DOLPHIN  
URASHIMA  
YOKOSUKA DEEP TOW  
6K Camera DEEP TOW  
6K Sonar DEEP TOW  
KM-ROV  
POWER GRAB  
SAMPLER (SHELL)  
POWER GRAB  
SAMPLER (CLOW)  
BMS

#### Go to a Cruise Information

Cruise ID:

#### Go to a Dive Information

Dive ID:

## KAIMEI KM17-06C Precipitable water vapor (GNSS water vapor)

Last Modified: 2018-03-30

[ReadMe](#) [Observation Data](#) [Data Format](#)

Cruise ID: [KM17-06C](#)

Precipitable water vapor (GNSS water vapor): Processed (DMO)-Corrected

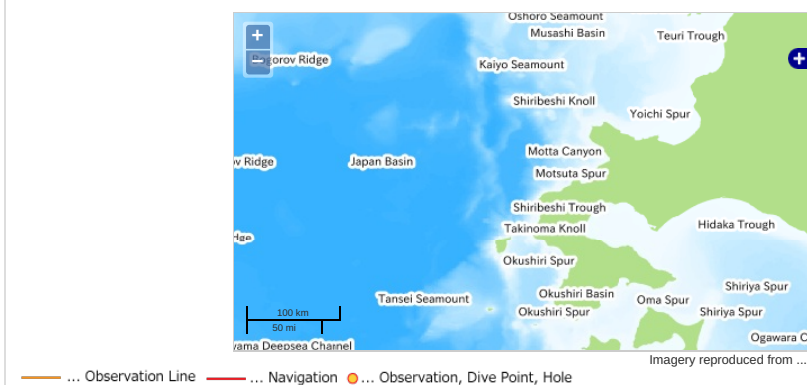
Data Policy: [JAMSTEC](#)

Observation Items: Precipitable water vapor (GNSS water vapor)

Science Keywords:

ATMOSPHERE > ATMOSPHERIC WATER VAPOR > WATER VAPOR

### Observation Map

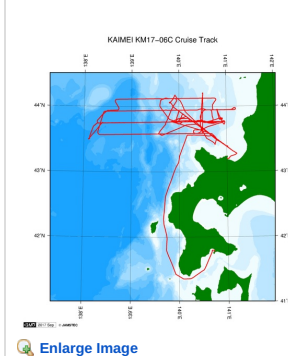


### Data List

File names

☐ KM17-06C\_gnsspww.dat

### Related Information



[Enlarge Image](#)

#### KM17-06C

Ship Name: KAIMEI

Period: 2017-06-22 - 2017-07-10

Chief Scientist: Tetsuo No (JAMSTEC)

Proposal Integrated Research Project on Seismic and Tsunami Hazards Around the Sea of Japan

Title:

### Update History

2018-03-30	An observation data was registered.
2018-02-09	An observation data was registered.

#### JAMSTEC

[Site Policy](#)  
[Privacy Policy](#)  
[Application for Data and Samples](#)  
[Data Policy](#)  
  
[What's New](#)  
[Update History](#)  
[Feeds](#)

#### Lists

[Publication List](#)  
[Amount of Public Info.](#)  
  
[Data](#)  
[Map Search](#)  
[Data Tree](#)  
[Detailed Search](#)

#### Information of the Ships

[NATSUSHIMA](#)  
[KAIYO](#)  
[YOKOSUKA](#)  
[MIRAI](#)  
[KAIREI](#)  
[CHIKYU](#)  
[KAIMEI](#)  
[SHINSEI MARU](#)  
[HAKUHO MARU](#)

#### Information of the Submersibles

[KAICO](#)  
[SHINKAI 2000](#)  
[SHINKAI 6500](#)  
[DEEP TOW](#)  
[HYPER-DOLPHIN](#)  
[URASHIMA](#)  
[YOKOSUKA DEEP TOW](#)  
[6K Camera DEEP TOW](#)  
[6K Sonar DEEP TOW](#)  
[KM-ROV](#)  
[POWER GRAB SAMPLER \(SHELL\)](#)  
[POWER GRAB SAMPLER \(CLOW\)](#)  
[BMS](#)

#### Go to a Cruise Information

Cruise ID:

#### Go to a Dive Information

Dive ID: