

MIRAI MR13-03 Leg1 Sea-surface Photosynthetically Active Radiation (PAR)

Last Modified: 2017-11-09

[ReadMe](#) [Observation Data](#) [Data Format](#)

Cruise ID: [MR13-03 Leg1](#)

Sea-surface Photosynthetically Active Radiation (PAR) : Raw

Data Policy: [JAMSTEC](#)

Observation Items:

Science Keywords:

OCEANS > OCEAN OPTICS > PHOTOSYNTHETICALLY ACTIVE RADIATION

Cruise Report

http://www.godac.jamstec.go.jp/catalog/data/doc_catalog/media/MR13-03_leg1-2_all.pdf

For Using Data

Principal Investigator

Data Management Office

Use Constraints

See [Terms and Conditions](#) about constrain of use.

Data Citation

See [Terms and Conditions](#) about data citation.

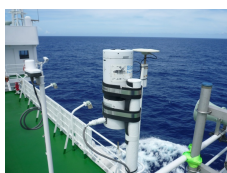
Period (UTC)

2013-05-31 07:00 – 2013-06-09 21:30

Instrument

Instrument:

Surface Photosynthetically available radiation (PAR) (~MR15-E01)



Overview

Photosynthetically available radiation (PAR) in the air was acquired by the radiometer PUV-510B, which was set up on the deck of the anti-rolling system .

Specifications

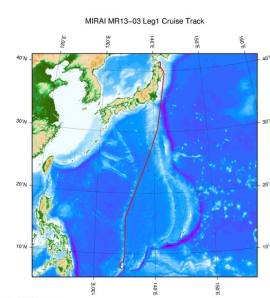
Manufacturer:	Biospherical Instruments Inc.
Type:	PUV-510B
Logging rate:	6 [second]
Location:	Starboard side of the deck on the anti-rolling system (18m from the sea surface)
Measurement wavelength:	400 - 700 [nm] (PAR)

Note

File naming rule for PAR_YYYYMMDD.txt.

PAR_ :	Fixed as 'PAR_'
YYYY :	Recording start Year (UTC)
MM :	Recording start month (UTC)
DD :	Recording start day (UTC)

Related Information



 [Enlarge Image](#)

MR13-03 Leg1

Ship Name: MIRAI
Period: 2013-05-31 - 2013-06-10
Chief Scientist: Masaki Katsumata (JAMSTEC)
Project Name: [MJO Research]
Proposal ▶ Observational Study on the Intreseasonal Variability over the western Pacific
Title:

Update History

2017-11-09	An observation data was registerd.
2015-03-31	An observation data was registerd.

[Privacy Policy](#)
[Application for Data and Samples](#)
[Data Policy](#)

[What's New](#)
[Update History](#)
[Feeds](#)

[Amount of Public Info.](#)

[Data](#)
[Map Search](#)
[Data Tree](#)
[Detailed Search](#)

[KAIYO](#)
[YOKOSUKA](#)
[MIRAI](#)
[KAIREI](#)
[CHIKYU](#)
[KAIMEI](#)
[SHINSEI MARU](#)
[HAKUHO MARU](#)

[KAIKO](#)
[SHINKAI 2000](#)
[SHINKAI 6500](#)
[DEEP TOW](#)
[HYPER-DOLPHIN](#)
[URASHIMA](#)
[YOKOSUKA DEEP TOW](#)
[6K Camera DEEP TOW](#)
[6K Sonar DEEP TOW](#)
[KM-ROV](#)
[POWER GRAB SAMPLER \(SHELL\)](#)
[POWER GRAB SAMPLER \(CLOW\)](#)
[BMS](#)

Cruise ID:

[Go to a Dive Information](#)

Dive ID:

Copyright 2011 Japan Agency for Marine-Earth Science and Technology



JAMSTEC 国立研究開発法人
海洋研究開発機構
JAPAN AGENCY FOR MARINE-EARTH SCIENCE AND TECHNOLOGY

MIRAI MR13-03 Leg1 Sea-surface Photosynthetically Active Radiation (PAR)

Last Modified: 2017-11-09

[ReadMe](#) [Observation Data](#) [Data Format](#)

Cruise ID: [MR13-03 Leg1](#)

Sea-surface Photosynthetically Active Radiation (PAR) Raw

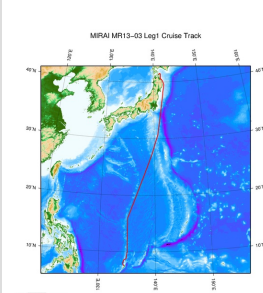
Data Policy: [JAMSTEC](#)

Sea-surface PAR

Comma Separated Value

Column No.	Content	Remarks
1	DATE	Year, Month Day [YYYYMMDD]
2	TIME	Hour, Minute, Second [hhmmss]
3	PAR	PAR (Variable length, Floating-point, Exponential Form) [microEinsteins/cm^2/sec]

Related Information



[Enlarge Image](#)

MR13-03 Leg1

Ship Name: MIRAI

Period: 2013-05-31 - 2013-06-10

Chief Scientist: Masaki Katsumata (JAMSTEC)

Project Name: [MJO Research]

Proposal ▶ Observational Study on the Intreseasonal Variability over the western Pacific

Title:

Update History

2017-11-09	An observation data was registerd.
2015-03-31	An observation data was registerd.

JAMSTEC
[Site Policy](#)
[Privacy Policy](#)
[Application for Data and Samples](#)
[Data Policy](#)
What's New
[Update History](#)
[Feeds](#)

Lists
[Publication List](#)
[Amount of Public Info.](#)
Data
[Map Search](#)
[Data Tree](#)
[Detailed Search](#)

Information of the Ships
[NATSUSHIMA](#)
[KAIYO](#)
[YOKOSUKA](#)
[MIRAI](#)
[KAIREI](#)
[CHIKYU](#)
[KAIMEI](#)
[SHINSEI MARU](#)
[HAKUHO MARU](#)

Information of the Submersibles
[KAIKO](#)
[SHINKAI 2000](#)
[SHINKAI 6500](#)
[DEEP TOW](#)
[HYPER-DOLPHIN](#)
[URASHIMA](#)
[YOKOSUKA DEEP TOW](#)
[6K Camera DEEP TOW](#)
[6K Sonar DEEP TOW](#)
[KM-ROV](#)
[POWER GRAB SAMPLER \(SHELL\)](#)
[POWER GRAB SAMPLER \(CLOW\)](#)
[BMS](#)

Go to a Cruise Information

Cruise ID:

Go to a Dive Information

Dive ID:

MIRAI MR13-03 Leg1 Sea-surface Photosynthetically Active Radiation (PAR)

Last Modified: 2017-11-09

[ReadMe](#) [Observation Data](#) [Data Format](#)

Cruise ID: [MR13-03 Leg1](#)

Sea-surface Photosynthetically Active Radiation (PAR) : Raw

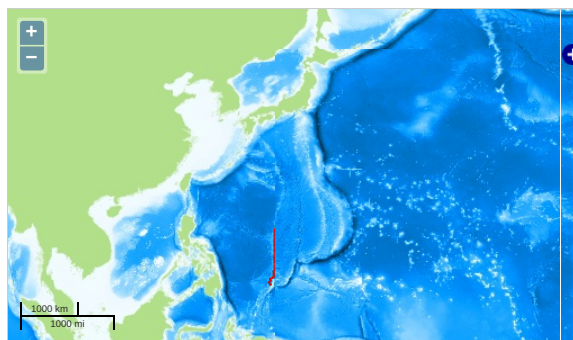
Data Policy: [JAMSTEC](#)

Observation Items:

Science Keywords:

OCEANS > OCEAN OPTICS > PHOTOSYNTHETICALLY ACTIVE RADIATION

Observation Map



... Observation Line ... Navigation ... Observation, Dive Point, Hole

Imagery reproduced from ...

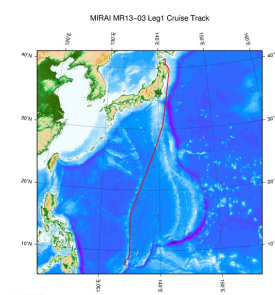
Data List

[Add to Basket](#)

File names

☐ PAR_20130531.txt
☐ PAR_20130601.txt
☐ PAR_20130602.txt
☐ PAR_20130603.txt
☐ PAR_20130604.txt
☐ PAR_20130605.txt
☐ PAR_20130606.txt
☐ PAR_20130607.txt
☐ PAR_20130608.txt
☐ PAR_20130609.txt

Related Information



[Enlarge Image](#)

MR13-03 Leg1

Ship Name: MIRAI

Period: 2013-05-31 - 2013-06-10

Chief Scientist: Masaki Katsumata (JAMSTEC)

Project Name: [MJO Research]

Proposal ▶ Observational Study on the Intreseasonal Variability over the western Pacific

Title:

Update History

2017-11-09 An observation data was registerd.
 2015-03-31 An observation data was registered.

JAMSTEC
 Site Policy
 Privacy Policy
 Application for Data and Samples
 Data Policy
 What's New
 Update History
 Feeds

Lists
 Publication List
 Amount of Public Info.
 Data
 Map Search
 Data Tree
 Detailed Search

Information of the Ships
 NATSUSHIMA
 KAIYO
 YOKOSUKA
 MIRAI
 KAIREI
 CHIKYU
 KAIMEI
 SHINSEI MARU
 HAKUHO MARU

Information of the Submersibles
 KAIKO
 SHINKAI 2000
 SHINKAI 6500
 DEEP TOW
 HYPER-DOLPHIN
 URASHIMA
 YOKOSUKA DEEP TOW
 6K Camera DEEP TOW
 6K Sonar DEEP TOW
 KM-ROV
 POWER GRAB SAMPLER

Go to a Cruise Information

Cruise ID:

Go to a Dive Information

Dive ID:

(SHELL)
POWER GRAB SAMPLER
(CLOW)
BMS

Copyright 2011 Japan Agency for Marine-Earth Science and
Technology



JAMSTEC 国立研究開発法人
海洋研究開発機構
JAPAN AGENCY FOR MARINE-EARTH SCIENCE AND TECHNOLOGY