

MIRAI MR16-09 Leg3 Partial Pressure of CO2 (pCO2)

Last Modified: 2019-07-31

[ReadMe](#) [Observation Data](#) [Data Format](#)

Cruise ID: [MR16-09 Leg3](#)

Partial Pressure of CO2 (pCO2): Processed (PI)

Data Policy: [JAMSTEC](#)

Observation Items: CO2, Atmospheric pressure, Wind direction, Wind speed, Sea surface temperature, Sea surface salinity

Science Keywords:

OCEANS > OCEAN CHEMISTRY > CARBON DIOXIDE

Cruise Report

http://www.godac.jamstec.go.jp/catalog/data/doc_catalog/media/MR16-09_leg1-4_all.pdf

For Using Data

Principal Investigator

Akihiko Murata (JAMSTEC)

Use Constraints

See [Terms and Conditions](#) about constrain of use.

Data Citation

See [Terms and Conditions](#) about data citation.

Instrument

Instrument:

pCO2 measurement system (MR10-07

-)



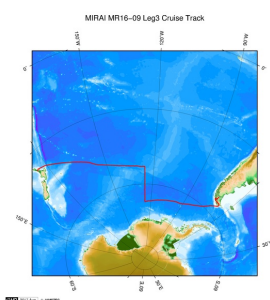
Data Citation

Refer [WHP P17E Revisit in 2017 Data Book](#) (doi: 10.17596/00000003) .

Overview

For details about observation, please refer to the Data book "[WHP P17E Revisit in 2017 Data Book](#)" (doi: 10.17596/00000003) and Readme document attached with data file.

Related Information



[Enlarge Image](#)

MR16-09 Leg3

Ship Name: MIRAI

Period: 2017-02-08 - 2017-03-04

Chief Scientist: Hiroshi Uchida (JAMSTEC)

Project Name: [POST-WOCE Hydrography]

Proposal ▶ Ship-borne measurements of aerosols in the marine atmosphere: Investigation of potential influence of marine aerosol particles on the climate;

Update History

2019-07-31 An observation data was registered.

JAMSTEC

[Site Policy](#)
[Privacy Policy](#)
[Application for Data and Samples](#)
[Data Policy](#)

[What's New](#)
[Update History](#)
[Feeds](#)

Lists

[Publication List](#)
[Amount of Public Info.](#)

Data
[Map Search](#)
[Data Tree](#)
[Detailed Search](#)

Information of the Ships

NATSUSHIMA
KAIYO
YOKOSUKA
MIRAI
KAIREI
CHIKYU
KAIMEI
SHINSEI MARU
HAKUHO MARU

Information of the Submersibles

KAIKO
SHINKAI 2000
SHINKAI 6500
DEEP TOW
HYPER-DOLPHIN
URASHIMA
YOKOSUKA DEEP TOW
6K Camera DEEP TOW
6K Sonar DEEP TOW
KM-ROV
POWER GRAB SAMPLER (SHELL)
POWER GRAB SAMPLER (CLOW)
BMS

Go to a Cruise Information

Cruise ID:

Go to a Dive Information

Dive ID:

MIRAI MR16-09 Leg3 Partial Pressure of CO2 (pCO2)

Last Modified: 2019-07-31

[ReadMe](#) [Observation Data](#) [Data Format](#)

Cruise ID: [MR16-09 Leg3](#)

Partial Pressure of CO2 (pCO2) Processed (PI)

Data Policy: [JAMSTEC](#)

pCO2 FORMAT_J (MR11-08-)

Air-xCO₂

The file is in fixed comma separated text file (csv) format.

The "missing value" is defined as -999.

Column NO.	Column Heading	Comments
1	Date (UTC)	Year, Month, Day
2	Time (UTC)	Hour, Minute, Second
3	Latitude (degree)	Positive in north
4	Longitude (degree)	Degree in eastward (0 - 360)
5	Sea surface temperature (°C)	
6	Sea surface salinity (PSU)	
7	Air pressure (hPa)	
8	Wind direction (degree)	
9	Wind speed (m/s)	
10	xCO2 in dry air (ppmv)	

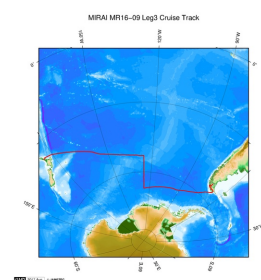
Sea-xCO₂

The file is in fixed comma separated text file (csv) format.

The "missing value" is defined as -999.

Column NO.	Column Heading	Comments
1	Date (UTC)	Year, Month, Day
2	Time (UTC)	Hour, Minute, Second
3	Latitude (degree)	Positive in north
4	Longitude (degree)	Degree in eastward (0 - 360)
5	Sea surface temperature (°C)	
6	Sea surface salinity (PSU)	
7	Equilibrator temperature (°C)	
8	Equilibrator pressure (hPa)	
9	Air pressure (hPa)	
10	xCO2 in equilibrator (ppmv)	
11	pCO2 in equilibrator (µatm)	
12	pCO2 at SST (µatm)	
13	xCO2 in dry air (ppmv)	

Related Information



[Enlarge Image](#)

MR16-09 Leg3

Ship Name: MIRAI

Period: 2017-02-08 - 2017-03-04

Chief Scientist: Hiroshi Uchida (JAMSTEC)

Project Name: [POST-WOCE Hydrography]

Proposal ▶ Ship-borne measurements of aerosols in the marine atmosphere: Investigation of potential influence of marine aerosol particles on the climate;

Update History

2019-07-31 An observation data was registered.

JAMSTEC
[Site Policy](#)
[Privacy Policy](#)
[Application for Data and Samples](#)
[Data Policy](#)
[What's New](#)
[Update History](#)
[Feeds](#)

[Lists](#)
[Publication List](#)
[Amount of Public Info.](#)
[Data](#)
[Map Search](#)
[Data Tree](#)
[Detailed Search](#)

[Information of the Ships](#)
NATSUSHIMA
KAIYO
YOKOSUKA
MIRAI
KAIREI
CHIKYU
KAIMEI
SHINSEI MARU
HAKUHO MARU

[Information of the Submersibles](#)
KAIKO
SHINKAI 2000
SHINKAI 6500
DEEP TOW
HYPER-DOLPHIN
URASHIMA
YOKOSUKA DEEP TOW
6K Camera DEEP TOW
6K Sonar DEEP TOW
KM-ROV
POWER GRAB
SAMPLER (SHELL)
POWER GRAB
SAMPLER (CLOW)
BMS

Go to a Cruise Information

Cruise ID:

Go to a Dive Information

Dive ID:

MIRAI MR16-09 Leg3 Partial Pressure of CO2 (pCO2)

Last Modified: 2019-07-31

[ReadMe](#) [Observation Data](#) [Data Format](#)

Cruise ID: [MR16-09 Leg3](#)

Partial Pressure of CO2 (pCO2): Processed (PI)

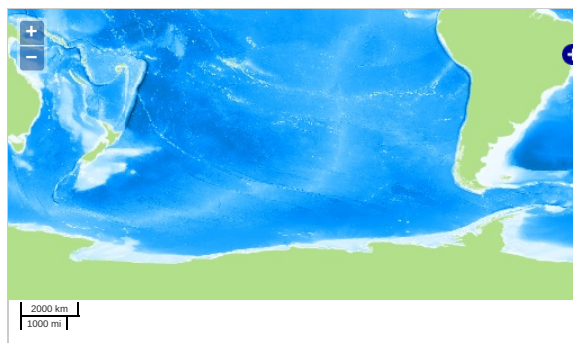
Data Policy: [JAMSTEC](#)

Observation Items: CO2, Atmospheric pressure, Wind direction, Wind speed, Sea surface temperature, Sea surface salinity

Science Keywords:

OCEANS > OCEAN CHEMISTRY > CARBON DIOXIDE

Observation Map



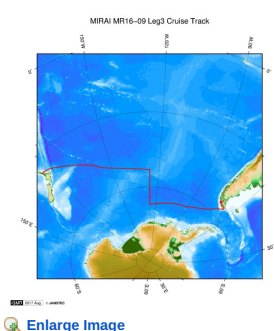
Imagery reproduced from ...

Data List

File names

- ☐ MR16-09leg3_air.csv
- ☐ MR16-09leg3_sea.csv
- ☐ Readme_pCO2_MR16-09.pdf
- ☐ Readme_pCO2_MR16-09_Supplement.pdf

Related Information



MR16-09 Leg3

Ship Name: MIRAI

Period: 2017-02-08 - 2017-03-04

Chief Scientist: Hiroshi Uchida (JAMSTEC)

Project Name: [POST-WOCE Hydrography]

Proposal ▶ Ship-borne measurements of aerosols in the marine atmosphere: Investigation of potential influence of marine aerosol particles on the climate;

Title:

[Enlarge Image](#)

Update History

2019-07-31 An observation data was registered.

JAMSTEC

[Site Policy](#)
[Privacy Policy](#)
[Application for Data and Samples](#)
[Data Policy](#)

What's New

[Update History](#)
[Feeds](#)

Lists

[Publication List](#)
[Amount of Public Info.](#)
[Data](#)
[Map Search](#)
[Data Tree](#)
[Detailed Search](#)

Information of the Ships

[NATSUSHIMA](#)
[KAIYO](#)
[YOKOSUKA](#)
[MIRAI](#)
[KAIREI](#)
[CHIKYU](#)
[KAIMEI](#)
[SHINSEI MARU](#)
[HAKUHO MARU](#)

Information of the Submersibles

[KAICO](#)
[SHINKAI 2000](#)
[SHINKAI 6500](#)
[DEEP TOW](#)
[HYPER-DOLPHIN](#)
[URASHIMA](#)
[YOKOSUKA DEEP TOW](#)
[6K Camera DEEP TOW](#)
[6K Sonar DEEP TOW](#)
[KM-ROV](#)
[POWER GRAB SAMPLER \(SHELL\)](#)
[POWER GRAB SAMPLER \(CLOW\)](#)
[BMS](#)

Go to a Cruise Information

Cruise ID:

Go to a Dive Information

Dive ID: