

## KAIMEI KM17-06C Shipboard Three Component Magnetometer (STCM)

Last Modified: 2019-06-12

[ReadMe](#) [Observation Data](#) [Data Format](#)

Cruise ID: [KM17-06C](#)

Shipboard Three Component Magnetometer (STCM): Processed (DMO)-Corrected

Data Policy: [JAMSTEC](#)

Observation Items: X, Y and Z component of geomagnetic field anomaly, Absolute value of geomagnetic field anomaly

Science Keywords:

OCEANS > MARINE GEOPHYSICS > MARINE MAGNETICS  
SOLID EARTH > GEOMAGNETISM

### Cruise Report

[http://www.godac.jamstec.go.jp/catalog/data/doc\\_catalog/media/KM17-06C\\_all.pdf](http://www.godac.jamstec.go.jp/catalog/data/doc_catalog/media/KM17-06C_all.pdf)

### For Using Data

#### Principal Investigator

Data Management Office

#### Use Constraints

See [Terms and Conditions](#) about constrain of use.

#### Data Citation

See [Terms and Conditions](#) about data citation.

### Period (UTC)

2017-06-22 00:48 – 2017-07-10 06:05

### Instrument

Instrument:

Three component magnetometer



### Overview

The data provided is for corrected three component geomagnetic field anomalies. Three-axes flux-gate sensors with ring-cored coils were fixed on the roof of the bridge.

They measure the following items :

h-component : along track line component, positive for the bow direction pitch.

s-component : across track line component, positive for the starboard side roll.

v-component : vertical component, positive for the downward direction.

The effect of ship motion was eliminated by roll and pitch data which was provided by a tilt sensor. The apparent magnetic influence can be detected through a "Figure of 8 turn"(a pair of clockwise and anti-clockwise turns) on each cruise. If no Figure of 8 turn on the cruise was completed, the latest Figure of 8 turn from the previous cruise was applied. As a quality control, data of low reliability was removed (see Data processing for quality control criteria). Synthetic geomagnetic field values were calculated from IGRF models.

### Measurement System

#### (1) Magnetometer

Manufacturer : Tierra Technica Ltd.

Type : SFG-2015

Measurement range :  $\pm 100,000$  nT

Accuracy : less than  $\pm 200$  nT

Resolution : 0.01 nT

Location : No.1 Laboratory

#### (2) Magnetic Sensor

Manufacturer : Tierra Technica Ltd.

Form : flux-gate sensors with ring-cored coils

Location : Compass deck

#### (3) Attitude sensor and Gyro compass

Manufacturer : IXBLUE

Type : PHINS

Accuracy(Roll, Pitch) : 0.01 degree

Accuracy(Gyro) : 0.01 degree \*Secant(Lat.)

Location : Gravity meter room

### Duration of the Figure of 8 turn

In KM16-06 cruise

Date (UTC)

2016/08/10 07:21:00 - 2016/08/10 07:45:00

2016/08/10 07:48:00 - 2016/08/10 08:03:00

2016/08/14 05:48:00 - 2016/08/14 06:09:00



## Data processing

The following corrections and calculations were performed.

### (1) Ship magnetization correction

$$Hob = RPYF + Hp \text{ ---(i)}$$

Hob: Observed magnetic field vector (Ship coordinates)

A: Effect of induced magnetization of the ship

R: Matrix of rotation due to the roll

P: Matrix of rotation due to the pitch

Y: Matrix of rotation due to the heading

F: Geomagnetic field vector

Hp: Ship's permanent magnetic moment

Following the equation(i), we calculate the geomagnetic field F.

$$RPYF = BHob + Hbp \text{ ---(ii)}$$

B: coefficient of Figure of 8 turn

Hbp: Permanent magnetic field vector of the ship

Reference: Isezaki,N., A new shipboard three-component magnetometer, GEOPHYSICS. VOL.51,NO10(1986);P1992-1998

### (2) International Geomagnetic Reference Field (IGRF)

Synthetic geomagnetic field values are calculated from IGRF 12th Generation models by using navigation data ; latitude, longitude and date.

Reference:IAGA Division V-MOD Geomagnetic Field Modeling[\[http://www.ngdc.noaa.gov/IAGA/vmod/igrf.html\]](http://www.ngdc.noaa.gov/IAGA/vmod/igrf.html)

### (3) Calculation of the geomagnetic field anomaly

$$An = F - Figrf$$

An: Geomagnetic field anomaly vector

F: Geomagnetic field vector

Figrf: Synthetic geomagnetic field vector from IGRF

### (4) Quality control of data

Following criteria were used for removal of data of low reliability:

- Time error (inversion of time, continuation of same timestamps)
- Summation of the difference of heading by one second exceeding 20 degree per 5 minutes
- Ground speed of the ship below 3knot or exceeding 20knot
- X, Y, or Z component of geomagnetic field anomaly exceeding  $\pm 4000nT$

### (5) Filtering of the geomagnetic field anomaly

Due to the residual undulation of the ship, a 120 second length Gaussian filter was applied for each component of the geomagnetic field anomaly data.

### (6) Output of the data

Time (UTC)

Latitude (degree)

Longitude (degree)

X: Northward (positive on the north) component of geomagnetic field anomaly (nT)

Y: Eastward (positive on the east) component of geomagnetic field anomaly (nT)

Z: Vertical (positive for downward) component of geomagnetic field anomaly (nT)

T: Absolute value of geomagnetic field anomaly (nT)

### Coefficient of the Figure of 8 turn and Permanent magnetic field vector of the ship

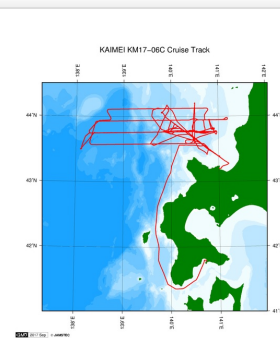
This coefficient was calculated from the above-mentioned Figure of 8 turn

B=		1.0665	-0.0013	-0.0450		3126.5175
	-0.0048	1.0543	-0.1287	Hbp=		14541.6666
	-0.0054	0.1166	0.8557			3031.1712

### Note

- (1) File naming rule: Cruise ID\_corr.stcm
- (2) Sampling rate: 10 seconds
- (3) Geodetic system: WGS84
- (4) If you would like the raw data set, please contact us from "Contact Us" above.

## Related Information



[Enlarge Image](#)

### KM17-06C

Ship Name: KAIMEI

Period: 2017-06-22 - 2017-07-10

Chief Scientist: Tetsuo No (JAMSTEC)

Proposal Integrated Research Project on Seismic and Tsunami Hazards Around the Sea of Japan

Title:

## Update History

- |            |                                    |
|------------|------------------------------------|
| 2019-06-12 | An observation data was registerd. |
| 2018-06-29 | An observation data was registerd. |



2018-03-21  
2018-02-14

An observation data was registerd.  
An observation data was registerd.

#### JAMSTEC

[Site Policy](#)  
[Privacy Policy](#)  
[Application for Data and Samples](#)  
[Data Policy](#)  
  
[What's New](#)  
[Update History](#)  
[Feeds](#)

#### Lists

[Publication List](#)  
[Amount of Public Info.](#)  
  
**Data**  
[Map Search](#)  
[Data Tree](#)  
[Detailed Search](#)

#### Information of the Ships

[NATSUSHIMA](#)  
[KAIYO](#)  
[YOKOSUKA](#)  
[MIRAI](#)  
[KAIREI](#)  
[CHIKYU](#)  
[KAIMEI](#)  
[SHINSEI MARU](#)  
[HAKUHO MARU](#)

#### Information of the Submersibles

[KAIKO](#)  
[SHINKAI 2000](#)  
[SHINKAI 6500](#)  
[DEEP TOW](#)  
[HYPER-DOLPHIN](#)  
[URASHIMA](#)  
[YOKOSUKA DEEP TOW](#)  
[6K Camera DEEP TOW](#)  
[6K Sonar DEEP TOW](#)  
[KM-ROV](#)  
[POWER GRAB SAMPLER \(SHELL\)](#)  
[POWER GRAB SAMPLER \(CLOW\)](#)  
[BMS](#)

#### Go to a Cruise Information

Cruise ID:

#### Go to a Dive Information

Dive ID:

Copyright 2011 Japan Agency for Marine-Earth Science and Technology



**JAMSTEC**

国立研究開発法人  
海洋研究開発機構  
JAPAN AGENCY FOR MARINE-EARTH SCIENCE AND TECHNOLOGY



## KAIMEI KM17-06C Shipboard Three Component Magnetometer (STCM)

Last Modified: 2019-06-12

[ReadMe](#) [Observation Data](#) [Data Format](#)

Cruise ID: [KM17-06C](#)

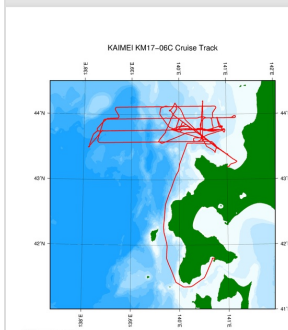
Shipboard Three Component Magnetometer (STCM): Processed (DMO)-Corrected

Data Policy: [JAMSTEC](#)

### STCM Corrected

No.	Column	Content	Format	Unit	Remarks
1	1 - 8	Date	i4,i2,i2		YYYYMMDD (UTC)
2	10 -15	Time	i2,i2,i2		hhmmss (UTC)
3	17 -25	Latitude	f9.5	degree	No sign for the northern hemisphere. Negative for the southern hemisphere.
4	27 -36	Longitude	f10.5	degree	No sign for eastern hemisphere. Negative for the western hemisphere.
5	38 -43	X component of geomagnetic field anomaly	f6.0	nT	Positive on the north
6	45 -50	Y component of geomagnetic field anomaly	f6.0	nT	Positive on the east
7	52 -57	Z component of geomagnetic field anomaly	f6.0	nT	Positive for downward
8	59 -64	Absolute value of geomagnetic field anomaly	f6.0	nT	

### Related Information



[Enlarge Image](#)

#### KM17-06C

Ship Name: KAIMEI

Period: 2017-06-22 - 2017-07-10

Chief Scientist: Tetsuo No (JAMSTEC)

Proposal Integrated Research Project on Seismic and Tsunami Hazards Around the Sea of Japan  
Title:

### Update History

2019-06-12	An observation data was registerd.
2018-06-29	An observation data was registerd.
2018-03-21	An observation data was registerd.
2018-02-14	An observation data was registerd.

#### JAMSTEC

[Site Policy](#)  
[Privacy Policy](#)  
[Application for Data and Samples](#)  
[Data Policy](#)

[What's New](#)  
[Update History](#)  
[Feeds](#)

#### Lists

[Publication List](#)  
[Amount of Public Info.](#)

#### Data

[Map Search](#)  
[Data Tree](#)  
[Detailed Search](#)

#### Information of the Ships

[NATSUSHIMA](#)  
[KAIYO](#)  
[YOKOSUKA](#)  
[MIRAI](#)  
[KAIREI](#)  
[CHIKYU](#)  
[KAIMEI](#)  
[SHINSEI MARU](#)  
[HAKUHO MARU](#)

#### Information of the Submersibles

[KAIKO](#)  
[SHINKAI 2000](#)  
[SHINKAI 6500](#)  
[DEEP TOW](#)  
[HYPER-DOLPHIN](#)  
[URASHIMA](#)  
[YOKOSUKA DEEP TOW](#)  
[6K Camera DEEP TOW](#)  
[6K Sonar DEEP TOW](#)  
[KM-ROV](#)  
[POWER GRAB SAMPLER \(SHELL\)](#)  
[POWER GRAB SAMPLER \(CLOW\)](#)  
[BMS](#)

#### Go to a Cruise Information

Cruise ID:

#### Go to a Dive Information

Dive ID:



## KAIMEI KM17-06C Shipboard Three Component Magnetometer (STCM)

Last Modified: 2019-06-12

[ReadMe](#) [Observation Data](#) [Data Format](#)

Cruise ID: **KM17-06C**

Shipboard Three Component Magnetometer (STCM): Processed (DMO)-Corrected

Data Policy: **JAMSTEC**

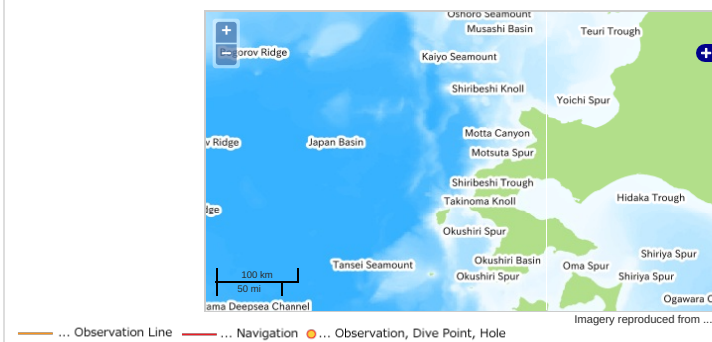
Observation Items: X, Y and Z component of geomagnetic field anomaly, Absolute value of geomagnetic field anomaly

Science Keywords:

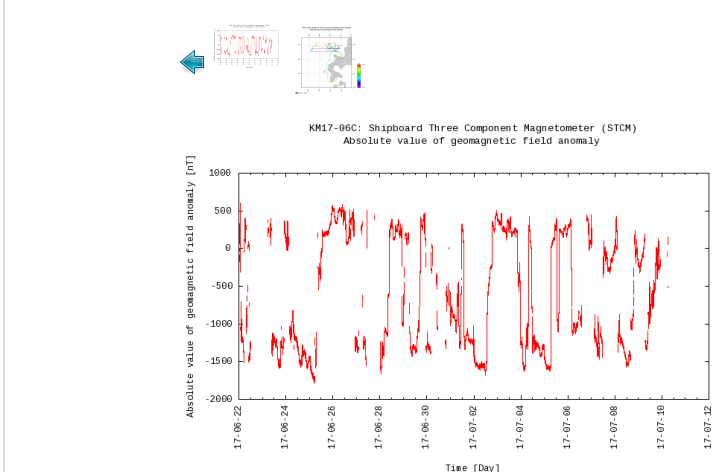
OCEANS > MARINE GEOPHYSICS > MARINE  
MAGNETICS

SOLID EARTH > GEOMAGNETISM

### Observation Map



### Figures



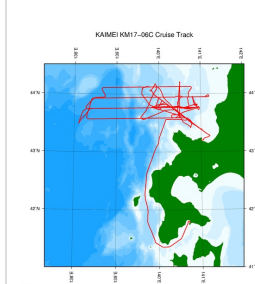
### Data List

[Add to Basket](#)

File names

☐ KM17-06C\_corr.stcm

### Related Information



[Enlarge Image](#)

#### KM17-06C

Ship Name: KAIMEI

Period: 2017-06-22 - 2017-07-10

Chief Scientist: Tetsuo No (JAMSTEC)

Proposal: Integrated Research Project on Seismic and Tsunami Hazards Around the Sea of Japan

Title:

### Update History

2019-06-12	An observation data was registered.
2018-06-29	An observation data was registered.
2018-03-21	An observation data was registered.
2018-02-14	An observation data was registered.



JAMSTEC

[Site Policy](#)  
[Privacy Policy](#)

[Application for Data and Samples](#)  
[Data Policy](#)

[What's New](#)  
[Update History](#)  
[Feeds](#)

Lists

[Publication List](#)  
[Amount of Public Info.](#)

Data

[Map Search](#)  
[Data Tree](#)  
[Detailed Search](#)

Information of the Ships

[NATSUSHIMA](#)  
[KAIYO](#)  
[YOKOSUKA](#)  
[MIRAI](#)  
[KAIREI](#)  
[CHIKYU](#)  
[KAIMEI](#)  
[SHINSEI MARU](#)  
[HAKUHO MARU](#)

Information of the Submersibles

[KAIKO](#)  
[SHINKAI 2000](#)  
[SHINKAI 6500](#)  
[DEEP TOW](#)  
[HYPER-DOLPHIN](#)  
[URASHIMA](#)  
[YOKOSUKA DEEP TOW](#)  
[6K Camera DEEP TOW](#)  
[6K Sonar DEEP TOW](#)  
[KM-ROV](#)  
[POWER GRAB SAMPLER \(SHELL\)](#)  
[POWER GRAB SAMPLER \(CLOW\)](#)  
[BMS](#)

Go to a Cruise Information

Cruise ID:

Go to a Dive Information

Dive ID:

