

## YOKOSUKA YK16-16 Bottle Sampling Water Chemical Analysis

Last Modified: 2019-06-28

[ReadMe](#) [Observation Data](#) [Data Format](#) [Quality Information](#)

Cruise ID: [YK16-16](#)

Bottle Sampling Water Chemical Analysis: Processed (PI)

Data Policy: [JAMSTEC](#)

Observation Items: Temperature, Salinity, Dissolved oxygen, Chlorophyll, Silicate, Nitrate, Nitrite, Phosphate, Ammonia, Total inorganic carbon, Alkalinity,

Potential temperature, 15N, 18O

Science Keywords:

OCEANS	> OCEAN CHEMISTRY	> AMMONIA
OCEANS	> OCEAN CHEMISTRY	> INORGANIC CARBON
OCEANS	> OCEAN CHEMISTRY	> NITRATE
OCEANS	> OCEAN CHEMISTRY	> NUTRIENTS
OCEANS	> OCEAN CHEMISTRY	> OXYGEN
OCEANS	> OCEAN CHEMISTRY	> PHOSPHATE
OCEANS	> OCEAN CHEMISTRY	> SILICATE
OCEANS	> OCEAN CHEMISTRY	> SALINITY
BIOSPHERE	> VEGETATION	> CHLOROPHYLL
OCEANS	> OCEAN CHEMISTRY	> CHLOROPHYLL
OCEANS	> OCEAN TEMPERATURE	> WATER TEMPERATURE
OCEANS	> SALINITY/DENSITY	> SALINITY
OCEANS	> OCEAN CHEMISTRY	> ALKALINITY
OCEANS	> OCEAN CHEMISTRY	> STABLE ISOTOPES
OCEANS	> OCEAN TEMPERATURE	> POTENTIAL TEMPERATURE

Cruise Report

[http://www.godac.jamstec.go.jp/catalog/data/doc\\_catalog/media/YK16-16\\_all.pdf](http://www.godac.jamstec.go.jp/catalog/data/doc_catalog/media/YK16-16_all.pdf)

### [For Using Data](#)

#### Principal Investigator

Tetsuichi Fujiki (JAMSTEC)  
Masahide Wakita (JAMSTEC)  
Chisato Yoshikawa (JAMSTEC)

#### Use Constraints

See [Terms and Conditions](#) about constrain of use.

#### Data Citation

See [Terms and Conditions](#) about data citation.

### Data Citation

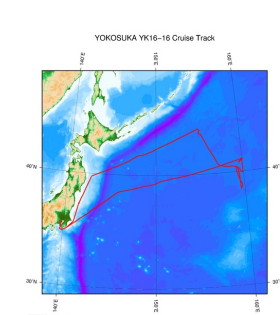
Please contact PI (Tetsuichi Fujiki :tfujiki@jamstec.go.jp)

### Overview

#### Summary of Instruments

Salinity : Autosol salinometer model 8400B (Guildline Instruments Ltd)  
Dissolved oxygen : Automatic photometric titrator (Kimoto Electronic Co. Ltd)  
Nutrients : QuAatro 2-HR (SEAL · BLTEC)  
Dissolved inorganic carbon : Carbon coulometer 5012 (UIC Inc.)  
Total alkalinity : open-cell-type alkalinity analyzer (ATT-15, Kimoto Electric)  
Chl.a: Flourometer 10-AU-005 (Tuner Design)  
Nitrogen and Oxygen isotopes of nitrate: PT/GC/IRMS (Thermo Fisher Scientific)

### Related Information



[Enlarge Image](#)

#### YK16-16

Ship Name: YOKOSUKA  
Period: 2016-11-10 - 2016-11-25  
Chief Scientist: Tetsuichi Fujiki (JAMSTEC)  
Project Name: [Station KNOT]  
Proposal ▶ Response of marine ecosystem to the ocean acidification in the subarctic western North Pacific  
Title:

### Update History

2019-06-28	An observation data was registerd.
------------	------------------------------------

Feeds

SHINSEI MARU  
HAKUHO MARU

YOKOSUKA DEEP TOW  
6K Camera DEEP TOW  
6K Sonar DEEP TOW  
KM-ROV  
POWER GRAB SAMPLER  
(SHELL)  
POWER GRAB SAMPLER  
(CLOW)  
BMS

Copyright 2011 Japan Agency for Marine-Earth Science and  
Technology



**JAMSTEC** 国立研究開発法人  
海洋研究開発機構  
JAPAN AGENCY FOR MARINE-EARTH SCIENCE AND TECHNOLOGY

## YOKOSUKA YK16-16 Bottle Sampling Water Chemical Analysis

Last Modified: 2019-06-28

[ReadMe](#) [Observation Data](#) [Data Format](#) [Quality Information](#)

Cruise ID: **YK16-16**

Bottle Sampling Water Chemical Analysis: Processed (PI)

Data Policy: [JAMSTEC](#)

### ODV Format

Please see the following link for details of ODV Format and ODV Software.

[Ocean Data View \(ODV\)](#)

Column No.	Column Heading Mnemonic	Comments
1	Cruise	Cruise Label
2	Station	Station name
3	Cast	Cast number
4	Month	Cast month
5	Day	Cast day
6	Year	Cast year
7	Time	Cast time(hour:minute)
8	Latitude	Latitude
9	Longitude	Longitude
10	Bot. Depth	Reported depth to bottom.
11	Pressure	Pressure
12	QF	Quality flags for CTD data
13	CTDTMP	Temperature
14	QF	Quality flags for CTD data
15	CTDSAL	CTD Salinity sensor
16	QF	Quality flags for CTD data
17	Theta	Potential temperature
18	QF	Quality flags for CTD data
19	Sigma Theta	Density
20	QF	Quality flags for CTD data
21	Salinity	Salinity
22	QF	Quality flags for water samples
23	Oxygen [umol/kg]	Oxygen
24	QF	Quality flags for water samples
25	Nitrate [umol/kg]	Nitrate
26	QF	Quality flags for water samples
27	Nitrite [umol/kg]	Nitrite
28	QF	Quality flags for water samples
29	Silicate [umol/kg]	Silicate
30	QF	Quality flags for water samples
31	Phosphate [umol/kg]	Phosphate
32	QF	Quality flags for water samples
33	Ammonium [umol/kg]	Ammonium
34	QF	Quality flags for water samples
35	TA [umol/kg]	Total alkalinity
36	QF	Quality flags for water samples
37	DIC [umol/kg]	Dissolved Inorganic Carbon
38	QF	Quality flags for water samples
39	CHLWEL [ug/l]	Chlorophyll a
40	QF	Quality flags for water samples
41	CHLA>10	Chlorophyll a(>10µm)
42	QF	Quality flags for water samples
43	CHLA3-10	Chlorophyll a(3-10µm)
44	QF	Quality flags for water samples
45	CHLA1-3	Chlorophyll a(1-3µm)
46	QF	Quality flags for water samples
47	CHLAGF/F-1	Chlorophyll a(GF/F filter-1µm)
48	QF	Quality flags for water samples
49	d15N_NO3	Nitrogen isotope ratio of nitrate
50	QF	Quality flags for water samples
51	d18O_NO3	Oxygen isotope ratio of nitrate
52	QF	Quality flags for water samples

### Related Information

#### YK16-16

Ship Name: YOKOSUKA

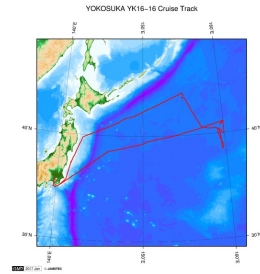
Period: 2016-11-10 - 2016-11-25

Chief Scientist: Tetsuichi Fujiki (JAMSTEC)

Project Name: [Station KNOT]

Proposal ▶ Response of marine ecosystem to the ocean acidification in the subarctic western North Pacific

Title:



 [Enlarge Image](#)

#### Update History

2019-06-28

An observation data was registered.

#### JAMSTEC

[Site Policy](#)

[Privacy Policy](#)

[Application for Data and Samples](#)

[Data Policy](#)

[What's New](#)

[Update History](#)

[Feeds](#)

#### Lists

[Publication List](#)

[Amount of Public Info.](#)

#### Data

[Map Search](#)

[Data Tree](#)

[Detailed Search](#)

#### Information of the Ships

[NATSUSHIMA](#)

[KAIYO](#)

[YOKOSUKA](#)

[MIRAI](#)

[KAIREI](#)

[CHIKYU](#)

[KAIMEI](#)

[SHINSEI MARU](#)

[HAKUHO MARU](#)

#### Information of the Submersibles

[KAIKO](#)

[SHINKAI 2000](#)

[SHINKAI 6500](#)

[DEEP TOW](#)

[HYPER-DOLPHIN](#)

[URASHIMA](#)

[YOKOSUKA DEEP TOW](#)

[6K Camera DEEP TOW](#)

[6K Sonar DEEP TOW](#)

[KM-ROV](#)

[POWER GRAB](#)

[SAMPLER \(SHELL\)](#)

[POWER GRAB](#)

[SAMPLER \(CLOW\)](#)

[BMS](#)

#### Go to a Cruise Information

Cruise ID:

#### Go to a Dive Information

Dive ID:

Copyright 2011 Japan Agency for Marine-Earth Science and Technology



**JAMSTEC**

国立研究開発法人  
海洋研究開発機構  
JAPAN AGENCY FOR MARINE-EARTH SCIENCE AND TECHNOLOGY

## YOKOSUKA YK16-16 Bottle Sampling Water Chemical Analysis

Last Modified: 2019-06-28

[ReadMe](#) [Observation Data](#) [Data Format](#) [Quality Information](#)

Cruise ID: [YK16-16](#)

Bottle Sampling Water Chemical Analysis: Processed (PI)

Data Policy: [JAMSTEC](#)

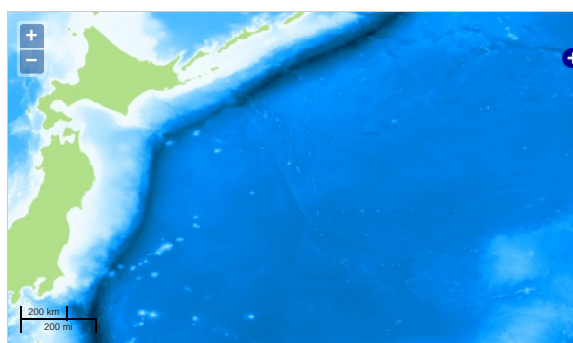
Observation Items: Temperature, Salinity, Dissolved oxygen, Chlorophyll, Silicate, Nitrate, Nitrite, Phosphate, Ammonia, Total inorganic carbon, Alkalinity,

Potential temperature, 15N, 18O

Science Keywords:

OCEANS > OCEAN CHEMISTRY > AMMONIA  
OCEANS > OCEAN CHEMISTRY > INORGANIC CARBON  
OCEANS > OCEAN CHEMISTRY > NITRATE  
OCEANS > OCEAN CHEMISTRY > NUTRIENTS  
OCEANS > OCEAN CHEMISTRY > OXYGEN  
OCEANS > OCEAN CHEMISTRY > PHOSPHATE  
OCEANS > OCEAN CHEMISTRY > SILICATE  
OCEANS > OCEAN CHEMISTRY > SALINITY  
BIOSPHERE > VEGETATION > CHLOROPHYLL  
OCEANS > OCEAN CHEMISTRY > CHLOROPHYLL  
OCEANS > OCEAN TEMPERATURE > WATER TEMPERATURE  
OCEANS > SALINITY/DENSITY > SALINITY  
OCEANS > OCEAN CHEMISTRY > ALKALINITY  
OCEANS > OCEAN CHEMISTRY > STABLE ISOTOPES  
OCEANS > OCEAN TEMPERATURE > POTENTIAL TEMPERATURE

### Observation Map



— ... Observation Line — ... Navigation ● ... Observation, Dive Point, Hole

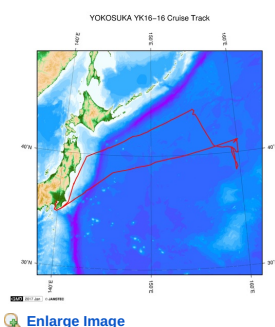
Imagery reproduced from ...

### Data List

File names

☐ YK16-16\_bottledata.xlsm

### Related Information



#### YK16-16

Ship Name: YOKOSUKA

Period: 2016-11-10 - 2016-11-25

Chief Scientist: Tetsuichi Fujiki (JAMSTEC)

Project Name: [Station KNOT]

Proposal ▶ Response of marine ecosystem to the ocean acidification in the subarctic western North Pacific

Title: Pacific

[Enlarge Image](#)

### Update History

2019-06-28 An observation data was registered.

JAMSTEC  
Site Policy  
Privacy Policy  
Application for Data and Samples  
Data Policy  
What's New

Lists  
Publication List  
Amount of Public Info.  
Data  
Map Search  
Data Tree  
Detailed Search

Information of the Ships  
NATSUSHIMA  
KAIYO  
YOKOSUKA  
MIRAI  
KAIREI  
CHIKYU

Information of the Submersibles  
KAIKO  
SHINKAI 2000  
SHINKAI 6500  
DEEP TOW  
HYPER-DOLPHIN  
URASHIMA

Go to a Cruise Information

Cruise ID:

Go to a Dive Information

Update History  
Feeds

KAIMEI  
SHINSEI MARU  
HAKUHO MARU

YOKOSUKA DEEP TOW  
6K Camera DEEP TOW  
6K Sonar DEEP TOW  
KM-ROV  
POWER GRAB SAMPLER  
(SHELL)  
POWER GRAB SAMPLER  
(CLOW)  
BMS

Dive ID:

Copyright 2011 Japan Agency for Marine-Earth Science and  
Technology



**JAMSTEC** 国立研究開発法人  
海洋研究開発機構  
JAPAN AGENCY FOR MARINE-EARTH SCIENCE AND TECHNOLOGY