

MIRAI MR13-03 Leg1 precipitation size distribution

Last Modified: 2015-07-31

[ReadMe](#) [Observation Data](#)

Cruise ID: [MR13-03 Leg1](#)

precipitation size distribution: Processed (PI)

Data Policy: [JAMSTEC](#)

Observation Items:

Science Keywords:

Data Information

Number of precipitation particles in each size category every 1 minutes. The data is obtained by the optical disdrometer "Parsivel".

Cruise Report

http://www.godac.jamstec.go.jp/catalog/data/doc_catalog/media/MR13-03_leg1-2_all.pdf

For Using Data

Principal Investigator

Masaki Katsumata (JAMSTEC)

Use Constraints

None

Data Citation

Users are recommended to acknowledge as follows:

"The data is obtained by the support of JAXA PMM 7th RA."

Instrument

Instrument:

Disdrometer

Instrument Information:

optical disdrometer

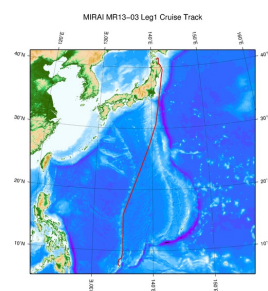
Parsivel2, OTT Hydromet GmbH



Data Format

See the manual in pdf file "OperInstructions_Parsivel2_English.pdf"

Related Information



© 2013 JAMSTEC

[Enlarge Image](#)

MR13-03 Leg1

Ship Name: MIRAI

Period: 2013-05-31 - 2013-06-10

Chief Scientist: Masaki Katsumata (JAMSTEC)

Project Name: [MJO Research]

Proposal ▶ Observational Study on the Intreseasonal Variability over the western Pacific

Title:

Update History

2015-07-31 An observation data was registered.

JAMSTEC

[Site Policy](#)

[Privacy Policy](#)

[Application for Data and Samples](#)

[Data Policy](#)

What's New

[Update History](#)

[Feeds](#)

Lists

[Publication List](#)

[Amount of Public Info.](#)

Data

[Map Search](#)

[Data Tree](#)

[Detailed Search](#)

Information of the Ships

[NATSUSHIMA](#)

[KAIYO](#)

[YOKOSUKA](#)

[MIRAI](#)

[KAIREI](#)

[CHIKYU](#)

[KAIMEI](#)

[SHINSEI MARU](#)

[HAKUHO MARU](#)

Information of the Submersibles

[KAIKO](#)

[SHINKAI 2000](#)

[SHINKAI 6500](#)

[DEEP TOW](#)

[HYPER-DOLPHIN](#)

[URASHIMA](#)

[YOKOSUKA DEEP TOW](#)

[6K Camera DEEP TOW](#)

[6K Sonar DEEP TOW](#)

[KM-ROV](#)

[POWER GRAB SAMPLER](#)

[\(SHELL\)](#)

[POWER GRAB SAMPLER](#)

[\(CLOW\)](#)

[BMS](#)

Go to a Cruise Information

Cruise ID:

Go to a Dive Information

Dive ID:



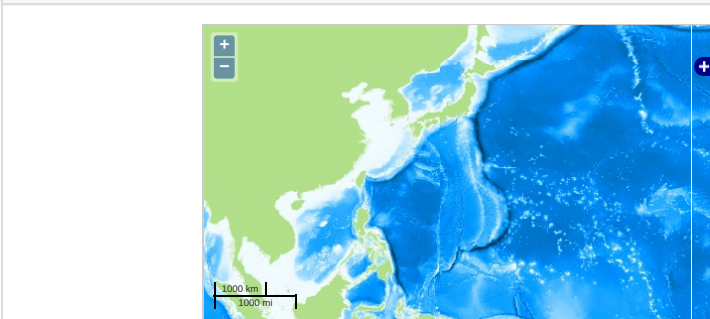
MIRAI MR13-03 Leg1 precipitation size distribution

Last Modified: 2015-07-31

[ReadMe](#) [Observation Data](#)

Cruise ID: **MR13-03 Leg1**
precipitation size distribution: Processed (PI)
Data Policy: [JAMSTEC](#)
Observation Items:
Science Keywords:

Observation Map



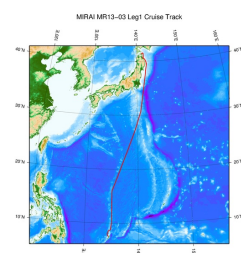
Imagery reproduced from ...

Data List

[Add to Basket](#)

- ☐ File names
- ☐ MR13-03_leg1_parsivel.zip
- ☐ OperInstructions_Parsivel2_English.pdf

Related Information



[Enlarge Image](#)

MR13-03 Leg1

Ship Name: MIRAI
Period: 2013-05-31 - 2013-06-10
Chief Scientist: Masaki Katsumata (JAMSTEC)
Project Name: [MJO Research]
Proposal: ▶ Observational Study on the Intreseasonal Variability over the western Pacific
Title:

Update History

2015-07-31 An observation data was registerd.

JAMSTEC

[Site Policy](#)
[Privacy Policy](#)
[Application for Data and Samples](#)
[Data Policy](#)

What's New

[Update History](#)
[Feeds](#)

Lists

[Publication List](#)
[Amount of Public Info.](#)

Data

[Map Search](#)
[Data Tree](#)
[Detailed Search](#)

Information of the Ships

NATSUSHIMA
KAIYO
YOKOSUKA
MIRAI
KAIREI
CHIKYU
KAIMEI
SHINSEI MARU
HAKUHO MARU

Information of the Submersibles

KAIKO
SHINKAI 2000
SHINKAI 6500
DEEP TOW
HYPER-DOLPHIN
URASHIMA
YOKOSUKA DEEP TOW
6K Camera DEEP TOW
6K Sonar DEEP TOW
KM-ROV
POWER GRAB SAMPLER (SHELL)
POWER GRAB SAMPLER (CLOW)
BMS

Go to a Cruise Information

Cruise ID:

Go to a Dive Information

Dive ID: