

MIRAI MR15-03 Leg2 Radiosonde RS41 data for evaluation of the atmospheric pressure

Last Modified: 2017-10-31

[ReadMe](#) [Observation Data](#)

Cruise ID: [MR15-03 Leg2](#)

Radiosonde RS41 data for evaluation of the atmospheric pressure : Processed (PI)

Data Policy: [JAMSTEC](#)

Observation Items:

Science Keywords:

Data Information

Additional data of radiosonde RS41 for the comparison of Vaisala radiosondes. There are two pressure data from the pressure sensor and from GPS-derived pressure calculated from GPS height by using RS41-SGP with the receiving system MW41 on R/V Mira. These data can be used for the comparison of the pressure data.

Cruise Report

http://www.godac.jamstec.go.jp/catalog/data/doc_catalog/media/MR15-03_leg2_all.pdf

For Using Data

Principal Investigator

Kazuhiro Oshima (Institute of Arctic Climate and Environmental Research)

Use Constraints

None

Data Citation

Refer to the following paper about details of the observation and the results of comparison of radiosondes.

Kawai, Y., M. Katsumata, K. Oshima, M. E. Hori and J. Inoue: Comparison of Vaisala radiosondes RS41 and RS92 launched over the oceans from the Arctic to the tropics, Atmospheric Measurement Techniques, 10, 2485-2498, doi:10.5194/amt-10-2485-2017, 2017.

Instrument

Instrument:

Radiosonde receiving system (Vaisala

MW41)

Instrument Information:

Receiver (SPS331), Software (MW41

v2.2.1), UHF antenna (RB21), GPS

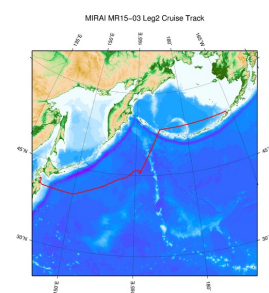
antenna (GA20)



Data Format

Text format. See the header of the data files for more details.

Related Information



 [Enlarge Image](#)

[MR15-03 Leg2](#)

Ship Name: MIRAI

Period: 2015-10-09 - 2015-10-21

Chief Scientist: Shigeto Nishino (JAMSTEC)

Project Name: [Arctic Ocean Climate System Research]

Proposal ▶ Observational studies on the Arctic Ocean climate and ecosystem variability

Title:

Update History

Date	Description
2017-10-31	An observation data was registered.

JAMSTEC

[Site Policy](#)
[Privacy Policy](#)
[Application for Data and Samples](#)
[Data Policy](#)

[What's New](#)
[Update History](#)
[Feeds](#)

Lists

[Publication List](#)
[Amount of Public Info.](#)

[Data](#)
[Map Search](#)
[Data Tree](#)
[Detailed Search](#)

Information of the Ships

NATSUSHIMA
KAIYO
YOKOSUKA
MIRAI
KAIREI
CHIKYU
KAIMEI
SHINSEI MARU
HAKUHO MARU

Information of the Submersibles

KAIKO
SHINKAI 2000
SHINKAI 6500
DEEP TOW
HYPER-DOLPHIN
URASHIMA
YOKOSUKA DEEP TOW
6K Camera DEEP TOW
6K Sonar DEEP TOW
KM-ROV

Go to a Cruise Information

Cruise ID:

Go to a Dive Information

Dive ID:

POWER GRAB SAMPLER
(SHELL)
POWER GRAB SAMPLER
(CLOW)
BMS

Copyright 2011 Japan Agency for Marine-Earth Science and
Technology



JAMSTEC 国立研究開発法人
海洋研究開発機構
JAPAN AGENCY FOR MARINE-EARTH SCIENCE AND TECHNOLOGY

MIRAI MR15-03 Leg2 Radiosonde RS41 data for evaluation of the atmospheric pressure

Last Modified: 2017-10-31

[ReadMe](#) [Observation Data](#)

Cruise ID: [MR15-03 Leg2](#)

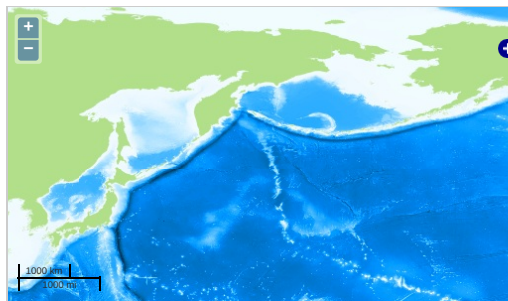
Radiosonde RS41 data for evaluation of the atmospheric pressure Processed (PI)

Data Policy: [JAMSTEC](#)

Observation Items:

Science Keywords:

Observation Map



... Observation Line ... Navigation ... Observation, Dive Point, Hole

Data List

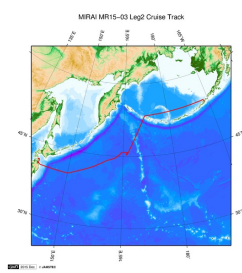
[Add to Basket](#)

☐ File names

☐ 20151011_2330UTC_RS41_pressure.txt

☐ 20151017_2330UTC_RS41_pressure.txt

Related Information



[Enlarge Image](#)

MR15-03 Leg2

Ship Name: MIRAI

Period: 2015-10-09 - 2015-10-21

Chief Scientist: Shigeto Nishino (JAMSTEC)

Project Name: [Arctic Ocean Climate System Research]

Proposal: Observational studies on the Arctic Ocean climate and ecosystem variability

Title:

Update History

2017-10-31 An observation data was registered.

JAMSTEC

[Site Policy](#)

[Privacy Policy](#)

[Application for Data and Samples](#)

[Data Policy](#)

[What's New](#)

[Update History](#)

[Feeds](#)

Lists

[Publication List](#)

[Amount of Public Info.](#)

[Data](#)

[Map Search](#)

[Data Tree](#)

[Detailed Search](#)

Information of the Ships

[NATSUSHIMA](#)

[KAIYO](#)

[YOKOSUKA](#)

[MIRAI](#)

[KAIREI](#)

[CHIKYU](#)

[KAIMEI](#)

[SHINSEI MARU](#)

[HAKUHO MARU](#)

Information of the Submersibles

[KAIKO](#)

[SHINKAI 2000](#)

[SHINKAI 6500](#)

[DEEP TOW](#)

[HYPER-DOLPHIN](#)

[URASHIMA](#)

[YOKOSUKA DEEP TOW](#)

[6K Camera DEEP TOW](#)

[6K Sonar DEEP TOW](#)

[KM-ROV](#)

[POWER GRAB SAMPLER \(SHELL\)](#)

[POWER GRAB SAMPLER \(CLOW\)](#)

[BMS](#)

Go to a Cruise Information

Cruise ID:

Go to a Dive Information

Dive ID:

