

MIRAI MR04-05 Shipboard Acoustic Doppler Current Profiler (ADCP)

Last Modified: 2012-12-08

[ReadMe](#) [Observation Data](#)

Cruise ID: [MR04-05](#)

Shipboard Acoustic Doppler Current Profiler (ADCP): Processed (PI)

Data Policy: [JAMSTEC](#)

Observation Items: Depth, Absolute velocity (zonal, meridional and vertical)

Science Keywords:

OCEANS > OCEAN CIRCULATION > OCEAN CURRENTS

Cruise Report

http://www.godac.jamstec.go.jp/catalog/data/doc_catalog/media/MR04-05_all.pdf

For Using Data

Principal Investigator

Upon consultation in advance with the chief of investigation and the person(s) in charge of research issues who gathered that data, we request that the text of the results material contain a statement to the effect that it was obtained during the R/V Mirai cruise of MR04-05 under the project of JWACS 2004, the Chief Scientist, Koji Shimada (JAMSTEC), and the following Principal Investigators (PI) for gathering the data.

Chief Scientist:

Koji Shimada (JAMSTEC)

Present contact address: Tokyo University of Marine Science and Technology

4-5-7, Konan, Minato-ku, Tokyo, 108-8477, Japan

Tel: +81-3-5463-0465

Fax: +81-3-5463-0378

E-mail: koji AT kaiyodai.ac.jp

PI for ADCP: Koji Shimada (JAMSTEC)

Collaborators: Takashi Kamoshida (System Intech Co., Ltd.)

Use Constraints

See [Terms and Conditions](#) about constrain of use.

Data Citation

See [Terms and Conditions](#) about data citation.

Instrument

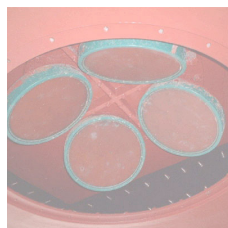
Instrument:

Shipboard acoustic doppler current profiler (ADCP) (MR08-02 -)



Instrument:

Shipboard acoustic doppler current profiler (ADCP) (- MR08-E01)



Need raw data?

If you would like the raw data set, please contact us from "Contact Us" above.

About this data

Period

01 Sep., 2004 - 13 Oct., 2004 (Dutch Harbor - Dutch Harbor)

Quality control

Please see the [Procedure of data processing](#).

Format Description

For the convenience to use the data and visualizations, we provide the dataset as AWI Ocean Data View format (generic spreadsheet format). Please refer the header information to identify the parameters involved in the datasets.

Ocean Data View : <http://odv.awi-bremarhaven.de/>

Japanese Guide : http://www.jodc.go.jp/jodc_pub/digitalpub_j.html

Data

1. Ship velocity : calculated from ADCP bottom tracking data

File name	File size	File name	File size
AdcpBT20040901.txt	6.45 MB	AdcpBT20040902.txt	6.23 MB
AdcpBT20040903.txt	0.22 MB	AdcpBT20040904.txt	1.18 MB
AdcpBT20040905.txt	1.09 MB	AdcpBT20040906.txt	3.49 MB
AdcpBT20040907.txt	40.96 MB	AdcpBT20040908.txt	42.62 MB
AdcpBT20040909.txt	24.48 MB	AdcpBT20040910.txt	32.94 MB
AdcpBT20040911.txt	42.21 MB	AdcpBT20040912.txt	39.08 MB
AdcpBT20040913.txt	39.91 MB	AdcpBT20040914.txt	28.01 MB
AdcpBT20040915.txt	1.70 MB	AdcpBT20040916_0000.txt	0.93 MB
AdcpBT20040916_0918.txt	3.44 MB	AdcpBT20040916_1733.txt	0.03 MB

AdcpBT20040916_1740.txt	4.96 MB		AdcpBT20040917.txt	23.61 MB
AdcpBT20040918.txt	21.56 MB		AdcpBT20040919.txt	24.78 MB
AdcpBT20040920_0002.txt	2.96 MB		AdcpBT20040920_0241.txt	2.77 MB
AdcpBT20040920_0513.txt	20.93 MB		AdcpBT20040921.txt	27.09 MB
AdcpBT20040922.txt	27.28 MB		AdcpBT20040923.txt	26.84 MB
AdcpBT20040924_0000.txt	14.07 MB		AdcpBT20040924_2251.txt	0.35 MB
AdcpBT20040925_0000.txt	0.44 MB		AdcpBT20040925_0128.txt	0.35 MB
AdcpBT20040925_0336.txt	8.35 MB		AdcpBT20040926_0000.txt	0.99 MB
AdcpBT20040926_0150.txt	3.09 MB		AdcpBT20040926_0800.txt	0.56 MB
AdcpBT20040926_0920.txt	0.01 MB		AdcpBT20040927.txt	19.40 MB
AdcpBT20040928.txt	4.07 MB		AdcpBT20040929.txt	23.29 MB
AdcpBT20040930.txt	26.94 MB		AdcpBT20041001.txt	26.90 MB
AdcpBT20041002.txt	26.87 MB		AdcpBT20041003.txt	23.14 MB
AdcpBT20041004.txt	6.02 MB		AdcpBT20041005.txt	7.64 MB
AdcpBT20041006.txt	24.55 MB		AdcpBT20041007_0000.txt	1.21 MB
AdcpBT20041007_0514.txt	0.49 MB		AdcpBT20041008.txt	1.28 MB
AdcpBT20041009.txt	0.53 MB		AdcpBT20041010.txt	0.03 MB

MR0405_AdcpBT.zip (compressed file of above data set)

2. Ship velocity : calculated from GPS data

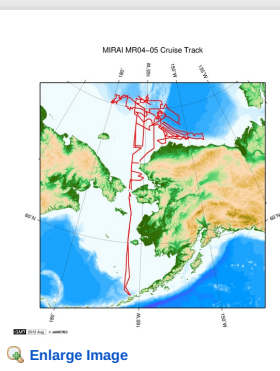
File name	File size	File name	File size
AdcpGPS20040901.txt	6.45 MB	AdcpGPS20040902.txt	6.23 MB
AdcpGPS20040903.txt	0.22 MB	AdcpGPS20040904.txt	1.18 MB
AdcpGPS20040905.txt	1.09 MB	AdcpGPS20040906.txt	3.49 MB
AdcpGPS20040907.txt	41.96 MB	AdcpGPS20040908.txt	43.73 MB
AdcpGPS20040909.txt	24.58 MB	AdcpGPS20040910.txt	33.67 MB
AdcpGPS20040911.txt	43.76 MB	AdcpGPS20040912.txt	39.93 MB
AdcpGPS20040913.txt	41.41 MB	AdcpGPS20040914.txt	28.27 MB
AdcpGPS20040915.txt	1.70 MB	AdcpGPS20040916_0000.txt	0.93 MB
AdcpGPS20040916_0918.txt	3.44 MB	AdcpGPS20040916_1733.txt	0.03 MB
AdcpGPS20040916_1740.txt	5.06 MB	AdcpGPS20040917.txt	23.97 MB
AdcpGPS20040918.txt	22.12 MB	AdcpGPS20040919.txt	25.85 MB
AdcpGPS20040920_0002.txt	3.01 MB	AdcpGPS20040920_0241.txt	2.85 MB
AdcpGPS20040920_0513.txt	21.97 MB	AdcpGPS20040921.txt	28.43 MB
AdcpGPS20040922.txt	28.30 MB	AdcpGPS20040923.txt	27.93 MB
AdcpGPS20040924_0000.txt	14.28 MB	AdcpGPS20040924_2251.txt	0.35 MB
AdcpGPS20040925_0000.txt	0.44 MB	AdcpGPS20040925_0128.txt	0.35 MB
AdcpGPS20040925_0336.txt	8.36 MB	AdcpGPS20040926_0000.txt	0.99 MB
AdcpGPS20040926_0150.txt	3.09 MB	AdcpGPS20040926_0800.txt	0.56 MB
AdcpGPS20040926_0920.txt	0.01 MB	AdcpGPS20040927.txt	19.76 MB
AdcpGPS20040928.txt	4.07 MB	AdcpGPS20040929.txt	24.11 MB
AdcpGPS20040930.txt	28.30 MB	AdcpGPS20041001.txt	28.24 MB
AdcpGPS20041002.txt	28.22 MB	AdcpGPS20041003.txt	24.27 MB
AdcpGPS20041004.txt	6.27 MB	AdcpGPS20041005.txt	7.78 MB
AdcpGPS20041006.txt	25.07 MB	AdcpGPS20041007_0000.txt	1.20 MB
AdcpGPS20041007_0514.txt	0.49 MB	AdcpGPS20041008.txt	1.28 MB
AdcpGPS20041009.txt	0.53 MB	AdcpGPS20041010.txt	0.03 MB

MR0405_AdcpGPS.zip (compressed file of above data set)

Needs raw data?

Please contact DMO office.
dmo@jamstec.go.jp

Related Information



MR04-05
Ship Name: MIRAI
Period: 2004-09-01 - 2004-10-13
Chief Scientist: Koji Shimada (JAMSTEC)
Project Name: [Arctic Ocean Climate System Reaserch]

[Enlarge Image](#)

Update History

2012-12-08	An observation data was registered.
2012-12-06	An observation data was registered.
2012-11-25	An observation data was registered.

[Data Policy](#)

[Map Search](#)

[KAIREI](#)

[DEEP TOW](#)

[Go to a Dive Information](#)

[What's New](#)

[Data Tree](#)

[CHIKYU](#)

[HYPER-DOLPHIN](#)

Dive ID:

[Update History](#)

[Detailed Search](#)

[KAIMEI](#)

[URASHIMA](#)

[Feeds](#)

[SHINSEI MARU](#)

[YOKOSUKA DEEP TOW](#)

[6K Camera DEEP TOW](#)

[6K Sonar DEEP TOW](#)

[KM-ROV](#)

[POWER GRAB SAMPLER](#)

[\(SHELL\)](#)

[POWER GRAB SAMPLER](#)

[\(CLOW\)](#)

[BMS](#)

Copyright 2011 Japan Agency for Marine-Earth Science and Technology



JAMSTEC

国立研究開発法人
海洋研究開発機構
JAPAN AGENCY FOR MARINE EARTH SCIENCE AND TECHNOLOGY

MIRAI MR04-05 Shipboard Acoustic Doppler Current Profiler (ADCP)

Last Modified: 2012-12-08

[ReadMe](#) [Observation Data](#)

Cruise ID: **MR04-05**

Shipboard Acoustic Doppler Current Profiler (ADCP) Processed (PI)

Data Policy: **JAMSTEC**

Observation Items: Depth, Absolute velocity (zonal, meridional and vertical)

Science Keywords:

OCEANS > OCEAN CIRCULATION > OCEAN CURRENTS

Cruise Report

http://www.godac.jamstec.go.jp/catalog/data/doc_catalog/media/MR04-05_all.pdf

For Using Data

Principal Investigator

Upon consultation in advance with the chief of investigation and the person(s) in charge of research issues who gathered that data, we request that the text of the results material contain a statement to the effect that it was obtained during the R/V Mirai cruise of MR04-05 under the project of JWACS 2004, the Chief Scientist, Koji Shimada (JAMSTEC), and the following Principal Investigators (PI) for gathering the data.

Chief Scientist:

Koji Shimada (JAMSTEC)

Present contact address: Tokyo University of Marine Science and Technology

4-5-7, Konan, Minato-ku, Tokyo,108-8477, Japan

Tel: +81-3-5463-0465

Fax: +81-3-5463-0378

E-mail: koji AT kaiyodai.ac.jp

PI for ADCP:Koji Shimada (JAMSTEC)

Collaborators:Takashi Kamoshida (System Intech Co., Ltd.)

Use Constraints

See [Terms and Conditions](#) about constrain of use.

Data Citation

See [Terms and Conditions](#) about data citation.

Instrument

Instrument:

Shipboard acoustic doppler current profiler (ADCP) (MR08-02 -)



Instrument:

Shipboard acoustic doppler current profiler (ADCP) (- MR08-E01)



Need raw data?

If you would like the raw data set, please contact us from "Contact Us" above.

About this data

Period

01 Sep., 2004 - 13 Oct., 2004 (Dutch Harbor - Dutch Harbor)

Quality control

Please see the [Procedure of data processing](#).

Format Description

For the convenience to use the data and visualizations, we provide the dataset as AWI Ocean Data View format (generic spreadsheet format). Please refer the header information to identify the parameters involved in the datasets.

Ocean Data View : <http://odv.awi-bremarhaven.de/>

Japanese Guide : http://www.jodc.go.jp/jodc_pub/digitalpub_j.html

Data

1. Ship velocity : calculated from ADCP bottom tracking data

File name	File size	File name	File size
AdcpBT20040901.txt	6.45 MB	AdcpBT20040902.txt	6.23 MB
AdcpBT20040903.txt	0.22 MB	AdcpBT20040904.txt	1.18 MB
AdcpBT20040905.txt	1.09 MB	AdcpBT20040906.txt	3.49 MB
AdcpBT20040907.txt	40.96 MB	AdcpBT20040908.txt	42.62 MB
AdcpBT20040909.txt	24.48 MB	AdcpBT20040910.txt	32.94 MB
AdcpBT20040911.txt	42.21 MB	AdcpBT20040912.txt	39.08 MB
AdcpBT20040913.txt	39.91 MB	AdcpBT20040914.txt	28.01 MB
AdcpBT20040915.txt	1.70 MB	AdcpBT20040916_0000.txt	0.93 MB
AdcpBT20040916_0918.txt	3.44 MB	AdcpBT20040916_1733.txt	0.03 MB
AdcpBT20040916_1740.txt	4.96 MB	AdcpBT20040917.txt	23.61 MB
AdcpBT20040918.txt	21.56 MB	AdcpBT20040919.txt	24.78 MB
AdcpBT20040920_0002.txt	2.96 MB	AdcpBT20040920_0241.txt	2.77 MB
AdcpBT20040920_0513.txt	20.93 MB	AdcpBT20040921.txt	27.09 MB
AdcpBT20040922.txt	27.28 MB	AdcpBT20040923.txt	26.84 MB

File name	File size	File name	File size
AdcpBT20040924_0000.txt	14.07 MB	AdcpBT20040924_2251.txt	0.35 MB
AdcpBT20040925_0000.txt	0.44 MB	AdcpBT20040925_0128.txt	0.35 MB
AdcpBT20040925_0336.txt	8.35 MB	AdcpBT20040926_0000.txt	0.99 MB
AdcpBT20040926_0150.txt	3.09 MB	AdcpBT20040926_0800.txt	0.56 MB
AdcpBT20040926_0920.txt	0.01 MB	AdcpBT20040927.txt	19.40 MB
AdcpBT20040928.txt	4.07 MB	AdcpBT20040929.txt	23.29 MB
AdcpBT20040930.txt	26.94 MB	AdcpBT20041001.txt	26.90 MB
AdcpBT20041002.txt	26.87 MB	AdcpBT20041003.txt	23.14 MB
AdcpBT20041004.txt	6.02 MB	AdcpBT20041005.txt	7.64 MB
AdcpBT20041006.txt	24.55 MB	AdcpBT20041007_0000.txt	1.21 MB
AdcpBT20041007_0514.txt	0.49 MB	AdcpBT20041008.txt	1.28 MB
AdcpBT20041009.txt	0.53 MB	AdcpBT20041010.txt	0.03 MB

MR0405_AdcpBT.zip (compressed file of above data set)

2. Ship velocity : calculated from GPS data

File name	File size	File name	File size
AdcpGPS20040901.txt	6.45 MB	AdcpGPS20040902.txt	6.23 MB
AdcpGPS20040903.txt	0.22 MB	AdcpGPS20040904.txt	1.18 MB
AdcpGPS20040905.txt	1.09 MB	AdcpGPS20040906.txt	3.49 MB
AdcpGPS20040907.txt	41.96 MB	AdcpGPS20040908.txt	43.73 MB
AdcpGPS20040909.txt	24.58 MB	AdcpGPS20040910.txt	33.67 MB
AdcpGPS20040911.txt	43.76 MB	AdcpGPS20040912.txt	39.93 MB
AdcpGPS20040913.txt	41.41 MB	AdcpGPS20040914.txt	28.27 MB
AdcpGPS20040915.txt	1.70 MB	AdcpGPS20040916_0000.txt	0.93 MB
AdcpGPS20040916_0918.txt	3.44 MB	AdcpGPS20040916_1733.txt	0.03 MB
AdcpGPS20040916_1740.txt	5.06 MB	AdcpGPS20040917.txt	23.97 MB
AdcpGPS20040918.txt	22.12 MB	AdcpGPS20040919.txt	25.85 MB
AdcpGPS20040920_0002.txt	3.01 MB	AdcpGPS20040920_0241.txt	2.85 MB
AdcpGPS20040920_0513.txt	21.97 MB	AdcpGPS20040921.txt	28.43 MB
AdcpGPS20040922.txt	28.30 MB	AdcpGPS20040923.txt	27.93 MB
AdcpGPS20040924_0000.txt	14.28 MB	AdcpGPS20040924_2251.txt	0.35 MB
AdcpGPS20040925_0000.txt	0.44 MB	AdcpGPS20040925_0128.txt	0.35 MB
AdcpGPS20040925_0336.txt	8.36 MB	AdcpGPS20040926_0000.txt	0.99 MB
AdcpGPS20040926_0150.txt	3.09 MB	AdcpGPS20040926_0800.txt	0.56 MB
AdcpGPS20040926_0920.txt	0.01 MB	AdcpGPS20040927.txt	19.76 MB
AdcpGPS20040928.txt	4.07 MB	AdcpGPS20040929.txt	24.11 MB
AdcpGPS20040930.txt	28.30 MB	AdcpGPS20041001.txt	28.24 MB
AdcpGPS20041002.txt	28.22 MB	AdcpGPS20041003.txt	24.27 MB
AdcpGPS20041004.txt	6.27 MB	AdcpGPS20041005.txt	7.78 MB
AdcpGPS20041006.txt	25.07 MB	AdcpGPS20041007_0000.txt	1.20 MB
AdcpGPS20041007_0514.txt	0.49 MB	AdcpGPS20041008.txt	1.28 MB
AdcpGPS20041009.txt	0.53 MB	AdcpGPS20041010.txt	0.03 MB

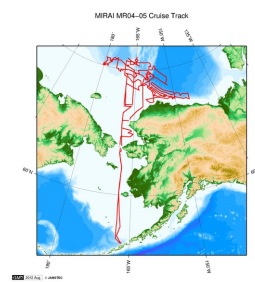
MR0405_AdcpGPS.zip (compressed file of above data set)

Needs raw data?

Please contact DMO office.

dmo@jamstec.go.jp

Related Information



[Enlarge Image](#)

MR04-05

Ship Name: MIRAI

Period: 2004-09-01 - 2004-10-13

Chief Scientist: Koji Shimada (JAMSTEC)

Project Name: [Arctic Ocean Climate System Research]

Update History

2012-12-08	An observation data was registered.
2012-12-06	An observation data was registered.
2012-11-25	An observation data was registered.

JAMSTEC

Site Policy
Privacy Policy
Application for Data and Samples
Data Policy
What's New
Update History
Feeds

Lists
Publication List
Amount of Public Info.
Data
Map Search
Data Tree
Detailed Search

Information of the Ships
NATSUSHIMA
KAIYO
YOKOSUKA
MIRAI
KAIREI
CHIKYU
KAIMEI
SHINSEI MARU
HAKUHO MARU

Information of the Submersibles
KAIKO
SHINKAI 2000
SHINKAI 6500
DEEP TOW
HYPER-DOLPHIN
URASHIMA
YOKOSUKA DEEP TOW
6K Camera DEEP TOW
6K Sonar DEEP TOW
KM-ROV
POWER GRAB SAMPLER (SHELL)
POWER GRAB SAMPLER (CLOW)
BMS

Go to a Cruise Information

Cruise ID:

Go to a Dive Information

Dive ID:



MIRAI MR04-05 Shipboard Acoustic Doppler Current Profiler (ADCP)

Last Modified: 2012-12-08

[ReadMe](#) [Observation Data](#)

Cruise ID: [MR04-05](#)

Shipboard Acoustic Doppler Current Profiler (ADCP): Processed (PI)

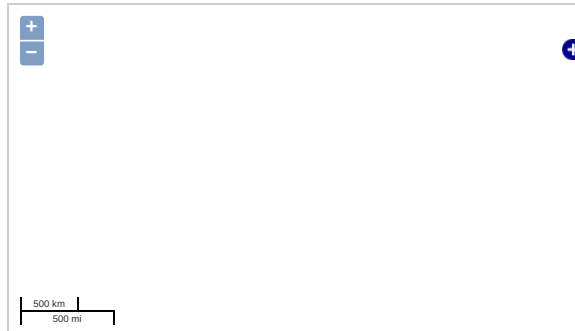
Data Policy: [JAMSTEC](#)

Observation Items: Depth, Absolute velocity (zonal, meridional and vertical)

Science Keywords:

[OCEANS](#) > [OCEAN CIRCULATION](#) > [OCEAN CURRENTS](#)

Observation Map



Imagery reproduced from ...

— ... Observation Line — ... Navigation ● ... Observation, Dive Point, Hole

Data List

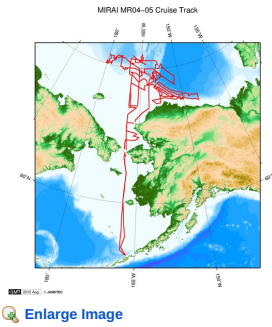
[Add to Basket](#)

File names

- AdcpBT20040901.txt
- AdcpBT20040902.txt
- AdcpBT20040903.txt
- AdcpBT20040904.txt
- AdcpBT20040905.txt
- AdcpBT20040906.txt
- AdcpBT20040907.txt
- AdcpBT20040908.txt
- AdcpBT20040909.txt
- AdcpBT20040910.txt
- AdcpBT20040911.txt
- AdcpBT20040912.txt
- AdcpBT20040913.txt
- AdcpBT20040914.txt
- AdcpBT20040915.txt
- AdcpBT20040916_0000.txt
- AdcpBT20040916_0918.txt
- AdcpBT20040916_1733.txt
- AdcpBT20040916_1740.txt
- AdcpBT20040917.txt
- AdcpBT20040918.txt
- AdcpBT20040919.txt
- AdcpBT20040920_0002.txt
- AdcpBT20040920_0241.txt
- AdcpBT20040920_0513.txt
- AdcpBT20040921.txt
- AdcpBT20040922.txt
- AdcpBT20040923.txt
- AdcpBT20040924_0000.txt
- AdcpBT20040924_2251.txt
- AdcpBT20040925_0000.txt
- AdcpBT20040925_0128.txt
- AdcpBT20040925_0336.txt
- AdcpBT20040926_0000.txt
- AdcpBT20040926_0150.txt
- AdcpBT20040926_0800.txt
- AdcpBT20040926_0920.txt
- AdcpBT20040927.txt
- AdcpBT20040928.txt
- AdcpBT20040929.txt
- AdcpBT20040930.txt
- AdcpBT20041001.txt

File Name
<input type="checkbox"/> AdcpBT20041002.txt
<input type="checkbox"/> AdcpBT20041003.txt
<input type="checkbox"/> AdcpBT20041004.txt
<input type="checkbox"/> AdcpBT20041005.txt
<input type="checkbox"/> AdcpBT20041006.txt
<input type="checkbox"/> AdcpBT20041007_0000.txt
<input type="checkbox"/> AdcpBT20041007_0514.txt
<input type="checkbox"/> AdcpBT20041008.txt
<input type="checkbox"/> AdcpBT20041009.txt
<input type="checkbox"/> AdcpBT20041010.txt
<input type="checkbox"/> AdcpGPS20040901.txt
<input type="checkbox"/> AdcpGPS20040902.txt
<input type="checkbox"/> AdcpGPS20040903.txt
<input type="checkbox"/> AdcpGPS20040904.txt
<input type="checkbox"/> AdcpGPS20040905.txt
<input type="checkbox"/> AdcpGPS20040906.txt
<input type="checkbox"/> AdcpGPS20040907.txt
<input type="checkbox"/> AdcpGPS20040908.txt
<input type="checkbox"/> AdcpGPS20040909.txt
<input type="checkbox"/> AdcpGPS20040910.txt
<input type="checkbox"/> AdcpGPS20040911.txt
<input type="checkbox"/> AdcpGPS20040912.txt
<input type="checkbox"/> AdcpGPS20040913.txt
<input type="checkbox"/> AdcpGPS20040914.txt
<input type="checkbox"/> AdcpGPS20040915.txt
<input type="checkbox"/> AdcpGPS20040916_0000.txt
<input type="checkbox"/> AdcpGPS20040916_0918.txt
<input type="checkbox"/> AdcpGPS20040916_1733.txt
<input type="checkbox"/> AdcpGPS20040916_1740.txt
<input type="checkbox"/> AdcpGPS20040917.txt
<input type="checkbox"/> AdcpGPS20040918.txt
<input type="checkbox"/> AdcpGPS20040919.txt
<input type="checkbox"/> AdcpGPS20040920_0002.txt
<input type="checkbox"/> AdcpGPS20040920_0241.txt
<input type="checkbox"/> AdcpGPS20040920_0513.txt
<input type="checkbox"/> AdcpGPS20040921.txt
<input type="checkbox"/> AdcpGPS20040922.txt
<input type="checkbox"/> AdcpGPS20040923.txt
<input type="checkbox"/> AdcpGPS20040924_0000.txt
<input type="checkbox"/> AdcpGPS20040924_2251.txt
<input type="checkbox"/> AdcpGPS20040925_0000.txt
<input type="checkbox"/> AdcpGPS20040925_0128.txt
<input type="checkbox"/> AdcpGPS20040925_0336.txt
<input type="checkbox"/> AdcpGPS20040926_0000.txt
<input type="checkbox"/> AdcpGPS20040926_0150.txt
<input type="checkbox"/> AdcpGPS20040926_0800.txt
<input type="checkbox"/> AdcpGPS20040926_0920.txt
<input type="checkbox"/> AdcpGPS20040927.txt
<input type="checkbox"/> AdcpGPS20040928.txt
<input type="checkbox"/> AdcpGPS20040929.txt
<input type="checkbox"/> AdcpGPS20040930.txt
<input type="checkbox"/> AdcpGPS20041001.txt
<input type="checkbox"/> AdcpGPS20041002.txt
<input type="checkbox"/> AdcpGPS20041003.txt
<input type="checkbox"/> AdcpGPS20041004.txt
<input type="checkbox"/> AdcpGPS20041005.txt
<input type="checkbox"/> AdcpGPS20041006.txt
<input type="checkbox"/> AdcpGPS20041007_0000.txt
<input type="checkbox"/> AdcpGPS20041007_0514.txt
<input type="checkbox"/> AdcpGPS20041008.txt
<input type="checkbox"/> AdcpGPS20041009.txt
<input type="checkbox"/> AdcpGPS20041010.txt

Related Information



[Enlarge Image](#)

MR04-05

Ship Name: MIRAI
 Period: 2004-09-01 - 2004-10-13
 Chief Scientist: Koji Shimada (JAMSTEC)
 Project Name: [Arctic Ocean Climate System Reaserch]

Update History

2012-12-08	An observation data was registerd.
2012-12-06	An observation data was registerd.
2012-11-25	An observation data was registerd.

JAMSTEC

[Site Policy](#)
[Privacy Policy](#)
[Application for Data and Samples](#)
[Data Policy](#)
[What's New](#)
[Update History](#)
[Feeds](#)

Lists

[Publication List](#)
[Amount of Public Info.](#)
Data
[Map Search](#)
[Data Tree](#)
[Detailed Search](#)

Information of the Ships

[NATSUSHIMA](#)
[KAIYO](#)
[YOKOSUKA](#)
[MIRAI](#)
[KAIREI](#)
[CHIKYU](#)
[KAIMEI](#)
[SHINSEI MARU](#)
[HAKUHO MARU](#)

Information of the Submersibles

[KAIKO](#)
[SHINKAI 2000](#)
[SHINKAI 6500](#)
[DEEP TOW](#)
[HYPER-DOLPHIN](#)
[URASHIMA](#)
[YOKOSUKA DEEP TOW](#)
[6K Camera DEEP TOW](#)
[6K Sonar DEEP TOW](#)
[KM-ROV](#)
[POWER GRAB SAMPLER \(SHELL\)](#)
[POWER GRAB SAMPLER \(CLOW\)](#)
[BMS](#)

Go to a Cruise Information

Cruise ID:

Go to a Dive Information

Dive ID:

Copyright 2011 Japan Agency for Marine-Earth Science and Technology



JAMSTEC 国立研究開発法人
 海洋研究開発機構
 JAPAN AGENCY FOR MARINE-EARTH SCIENCE AND TECHNOLOGY