

MIRAI MR09-01 Leg1 Marine Meteorology

Last Modified: 2017-04-11

[ReadMe](#)

[Observation Data](#)

Cruise ID: [MR09-01 Leg1](#)

Marine Meteorology: Processed (PI)

Data Policy: [JAMSTEC](#)

Observation Items: Atmospheric pressure, Long wave radiation, Short wave radiation, Air temperature, Dewpoint temperature, Relative humidity, Rainfall intensity, SST, Significant Wave Height, Wind U, Wind V

Science Keywords:

ATMOSPHERE	> ATMOSPHERIC PRESSURE	> SEA LEVEL PRESSURE
ATMOSPHERE	> ATMOSPHERIC RADIATION	> LONGWAVE RADIATION
ATMOSPHERE	> ATMOSPHERIC RADIATION	> SHORTWAVE RADIATION
ATMOSPHERE	> ATMOSPHERIC TEMPERATURE	> AIR TEMPERATURE
ATMOSPHERE	> ATMOSPHERIC WATER VAPOR	> DEW POINT TEMPERATURE
ATMOSPHERE	> ATMOSPHERIC WATER VAPOR	> HUMIDITY
ATMOSPHERE	> PRECIPITATION	
OCEANS	> OCEAN TEMPERATURE	> SEA SURFACE TEMPERATURE
OCEANS	> OCEAN WAVES	> SIGNIFICANT WAVE HEIGHT
OCEANS	> OCEAN WINDS	> SURFACE WINDS

Cruise Report

http://www.godac.jamstec.go.jp/catalog/data/doc_catalog/media/MR09-01_leg1-3_all.pdf

For Using Data

Principal Investigator

Kunio Yoneyama (JAMSTEC)

Use Constraints

See [Terms and Conditions](#) about constrain of use.

Data Citation

See [Terms and Conditions](#) about data citation.

Instrument

Instrument:

General maritime meteorological observation system



Instrument:

SOAR (Shipboard Oceanographic and Atmospheric Radiation) (- MR20-01)



Overview

Please see the [Data book](#) for details of data.

README for Surface Meteorological Dataset

"sfcmnet_****.dat" contains 1-minute mean values (time stamp at the end of average) of surface meteorological data as ASCII format.

Each line contains the following parameters;

Time in UTC expressed as YYYYMMDDHHMM

Time in Julian day (1.0000 = January 1, 0000Z)

longitude (degE)

latitude (degN)

pressure at sea surface (hPa)

air temperature (degC)

dew point temperature (degC)

relative humidity (%)

sea surface temperature (degC)

zonal wind component (m/sec)

meridional wind component (m/sec)

precipitation (mm/hr)

downward shortwave radiation (W/m2)

downward longwave radiation (W/m2)

Note that missing values are expressed as "9999.0".

Sensor types and their equipped height from the sea level are as follows.

Barometer (pressure) : Setra Systems, 370 ... 13 m (converted to 0 m level value)

Thermometer (T, RH) : Vaisala, HMP45A ... 21 m

Thermometer (SST) : Sea-Bird Electronics, SBE3S ... -5 m

Anemometer (wind) : R. M. Young, 05106 ... 25 m

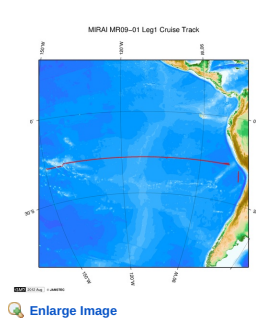
Rain gauge (rainfall) : R.M.Young, 50202 ... 24 m

Radiometer (short wave) : Eppley, PSP ... 24 m

Radiometer (long wave) : Eppley, PIR ... 24 m

For more information, please contact to : Kunio Yoneyama (yoneyamak@jamstec.go.jp)

Related Information



MR09-01 Leg1

Ship Name: MIRAI

Period: 2009-04-10 - 2009-05-19

Chief Scientist: Akihiko Murata (JAMSTEC)

Project Name: [POST-WOCE Hydrography, South Pacific Ocean Research Activity 2009]

Update History

2017-04-11	An observation data was registered.
2012-12-07	An observation data was registered.
2012-09-28	An observation data was registered.

JAMSTEC

[Site Policy](#)
[Privacy Policy](#)
[Application for Data and Samples](#)
[Data Policy](#)

[What's New](#)
[Update History](#)
[Feeds](#)

[Lists](#)
[Publication List](#)
[Amount of Public Info.](#)

[Data](#)
[Map Search](#)
[Data Tree](#)
[Detailed Search](#)

Information of the Ships

[NATSUSHIMA](#)
[KAIYO](#)
[YOKOSUKA](#)
[MIRAI](#)
[KAIREI](#)
[CHIKYU](#)
[KAIMEI](#)
[SHINSEI MARU](#)
[HAKUHO MARU](#)

Information of the Submersibles

[KAIKO](#)
[SHINKAI 2000](#)
[SHINKAI 6500](#)
[DEEP TOW](#)
[HYPER-DOLPHIN](#)
[URASHIMA](#)
[YOKOSUKA DEEP TOW](#)
[6K Camera DEEP TOW](#)
[6K Sonar DEEP TOW](#)
[KM-ROV](#)
[POWER GRAB](#)
[SAMPLER \(SHELL\)](#)
[POWER GRAB](#)
[SAMPLER \(CLOW\)](#)
[BMS](#)

Go to a Cruise Information

Cruise ID:

Go to a Dive Information

Dive ID:

Copyright 2011 Japan Agency for Marine-Earth Science and Technology



JAMSTEC 国立研究開発法人
海洋研究開発機構
JAPAN AGENCY FOR MARINE-EARTH SCIENCE AND TECHNOLOGY

MIRAI MR09-01 Leg1 Marine Meteorology

Last Modified: 2017-04-11

[ReadMe](#) [Observation Data](#)

Cruise ID: [MR09-01 Leg1](#)

Marine Meteorology: Processed (PI)

Data Policy: [JAMSTEC](#)

Observation Items: Atmospheric pressure, Long wave radiation, Short wave radiation, Air temperature, Dewpoint temperature, Relative humidity, Rainfall intensity, SST, Significant Wave Height, Wind U, Wind V

Science Keywords:

ATMOSPHERE	> ATMOSPHERIC PRESSURE	> SEA LEVEL PRESSURE
ATMOSPHERE	> ATMOSPHERIC RADIATION	> LONGWAVE RADIATION
ATMOSPHERE	> ATMOSPHERIC RADIATION	> SHORTWAVE RADIATION
ATMOSPHERE	> ATMOSPHERIC TEMPERATURE	> AIR TEMPERATURE
ATMOSPHERE	> ATMOSPHERIC WATER VAPOR	> DEW POINT TEMPERATURE
ATMOSPHERE	> ATMOSPHERIC WATER VAPOR	> HUMIDITY
ATMOSPHERE	> PRECIPITATION	
OCEANS	> OCEAN TEMPERATURE	> SEA SURFACE TEMPERATURE
OCEANS	> OCEAN WAVES	> SIGNIFICANT WAVE HEIGHT
OCEANS	> OCEAN WINDS	> SURFACE WINDS

Cruise Report

http://www.godac.jamstec.go.jp/catalog/data/doc_catalog/media/MR09-01_leg1-3_all.pdf

For Using Data

Principal Investigator

Kunio Yoneyama (JAMSTEC)

Use Constraints

See [Terms and Conditions](#) about constrain of use.

Data Citation

See [Terms and Conditions](#) about data citation.

Instrument

Instrument:

General maritime meteorological observation system



Instrument:

SOAR (Shipboard Oceanographic and Atmospheric Radiation)(- MR20-01)



Overview

Please see the [Data book](#) for details of data.

README for Surface Meteorological Dataset

"sfcmct_****.dat" contains 1-minute mean values (time stamp at the end of average) of surface meteorological data as ASCII format.

Each line contains the following parameters;

Time in UTC expressed as YYYYMMDDHHMM

Time in Julian day (1.0000 = January 1, 0000Z)

longitude (degE)

latitude (degN)

pressure at sea surface (hPa)

air temperature (degC)

dew point temperature (degC)

relative humidity (%)

sea surface temperature (degC)

zonal wind component (m/sec)

meridional wind component (m/sec)

precipitation (mm/hr)

downward shortwave radiation (W/m2)

downward longwave radiation (W/m2)

Note that missing values are expressed as "9999.0".

Sensor types and their equipped height from the sea level are as follows.

Barometer (pressure) : Setra Systems, 370 ... 13 m (converted to 0 m level value)

Thermometer (T, RH) : Vaisala, HMP45A ... 21 m

Thermometer (SST) : Sea-Bird Electronics, SBE3S ... -5 m

Anemometer (wind) : R. M. Young, 05106 ... 25 m

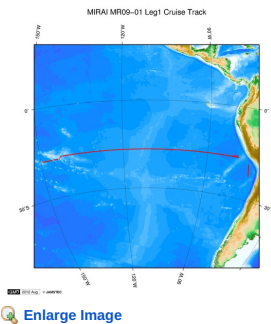
Rain gauge (rainfall) : R.M.Young, 50202 ... 24 m

Radiometer (short wave) : Eppley, PSP ... 24 m

Radiometer (long wave) : Eppley, PIR ... 24 m

For more information, please contact to : Kunio Yoneyama (yoneyamak@jamstec.go.jp)

Related Information



MR09-01 Leg1
Ship Name: MIRAI
Period: 2009-04-10 - 2009-05-19
Chief Scientist: Akihiko Murata (JAMSTEC)
Project Name: [POST-WOCE Hydrography, South Pacific Ocean Research Activity 2009]

Update History

2017-04-11	An observation data was registerd.
2012-12-07	An observation data was registerd.
2012-09-28	An observation data was registerd.

JAMSTEC

Site Policy
Privacy Policy
Application for Data and Samples
Data Policy

What's New
Update History
Feeds

Lists

Publication List
Amount of Public Info.

Data

Map Search
Data Tree
Detailed Search

Information of the Ships

NATSUSHIMA
KAIYO
YOKOSUKA
MIRAI
KAIREI
CHIKYU
KAIMEI
SHINSEI MARU
HAKUHO MARU

Information of the Submersibles

KAIKO
SHINKAI 2000
SHINKAI 6500
DEEP TOW
HYPER-DOLPHIN
URASHIMA
YOKOSUKA DEEP TOW
6K Camera DEEP TOW
6K Sonar DEEP TOW
KM-ROV
POWER GRAB SAMPLER (SHELL)
POWER GRAB SAMPLER (CLOW)
BMS

Go to a Cruise Information

Cruise ID:

Go to a Dive Information

Dive ID:



MIRAI MR09-01 Leg1 Marine Meteorology

Last Modified: 2017-04-11

[ReadMe](#) [Observation Data](#)

Cruise ID: [MR09-01 Leg1](#)

Marine Meteorology: Processed (PI)

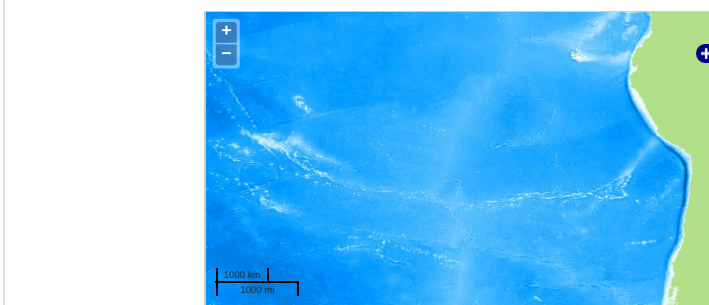
Data Policy: [JAMSTEC](#)

Observation Items: Atmospheric pressure, Long wave radiation, Short wave radiation, Air temperature, Dewpoint temperature, Relative humidity, Rainfall intensity, SST, Significant Wave Height, Wind U, Wind V

Science Keywords:

ATMOSPHERE	> ATMOSPHERIC PRESSURE	> SEA LEVEL PRESSURE
ATMOSPHERE	> ATMOSPHERIC RADIATION	> LONGWAVE RADIATION
ATMOSPHERE	> ATMOSPHERIC RADIATION	> SHORTWAVE RADIATION
ATMOSPHERE	> ATMOSPHERIC TEMPERATURE	> AIR TEMPERATURE
ATMOSPHERE	> ATMOSPHERIC WATER VAPOR	> DEW POINT TEMPERATURE
ATMOSPHERE	> ATMOSPHERIC WATER VAPOR	> HUMIDITY
ATMOSPHERE	> PRECIPITATION	
OCEANS	> OCEAN TEMPERATURE	> SEA SURFACE TEMPERATURE
OCEANS	> OCEAN WAVES	> SIGNIFICANT WAVE HEIGHT
OCEANS	> OCEAN WINDS	> SURFACE WINDS

Observation Map



— ... Observation Line — ... Navigation — ... Observation, Dive Point, Hole

Imagery reproduced from ...

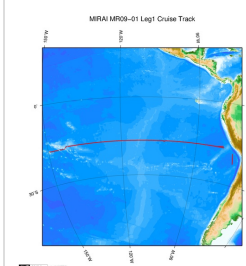
Data List

[Add to Basket](#)

File names

sfcmet_mr09-01leg1_1.dat

Related Information



[Enlarge Image](#)

MR09-01 Leg1

Ship Name: MIRAI

Period: 2009-04-10 - 2009-05-19

Chief Scientist: Akihiko Murata (JAMSTEC)

Project Name: [POST-WOCE Hydrography, South Pacific Ocean Research Activity 2009]

Update History

2017-04-11	An observation data was registered.
2012-12-07	An observation data was registered.
2012-09-28	An observation data was registered.

JAMSTEC

[Site Policy](#)

[Privacy Policy](#)

[Application for Data and Samples](#)

[Data Policy](#)

[What's New](#)

[Update History](#)

[Feeds](#)

Lists

[Publication List](#)

[Amount of Public Info.](#)

Data

[Map Search](#)

[Data Tree](#)

[Detailed Search](#)

Information of the Ships

[NATSUSHIMA](#)

[KAIYO](#)

[YOKOSUKA](#)

[MIRAI](#)

[KAIREI](#)

[CHIKYU](#)

[KAIMEI](#)

[SHINSEI MARU](#)

[HAKUHO MARU](#)

Information of the Submersibles

[KAIKO](#)

[SHINKAI 2000](#)

[SHINKAI 6500](#)

[DEEP TOW](#)

[HYPER-DOLPHIN](#)

[URASHIMA](#)

[YOKOSUKA DEEP TOW](#)

[6K Camera DEEP TOW](#)

[6K Sonar DEEP TOW](#)

[KM-ROV](#)

[POWER GRAB SAMPLER \(SHELL\)](#)

[POWER GRAB SAMPLER \(CLOW\)](#)

[BMS](#)

Go to a Cruise Information

Cruise ID:

Go to a Dive Information

Dive ID: