

## MIRAI MR14-02 Underway CTD

Last Modified: 2016-08-31

[ReadMe](#) [Observation Data](#)

Cruise ID: [MR14-02](#)

Underway CTD: Processed (PI)

Data Policy: [JAMSTEC](#)

Observation Items:

Science Keywords:

### Data Information

oceanic vertical distribution of conductivity, temperature and pressure, obtained by "Underway CTD".

### Cruise Report

[http://www.godac.jamstec.go.jp/catalog/data/doc\\_catalog/media/MR14-02\\_all.pdf](http://www.godac.jamstec.go.jp/catalog/data/doc_catalog/media/MR14-02_all.pdf)

### For Using Data

#### Principal Investigator

Takuya Hasegawa (JAMSTEC)

#### Use Constraints

None

#### Data Citation

See Terms and Conditions about data citation.

### Instrument

Instrument:

Underway CTD

Instrument Information:

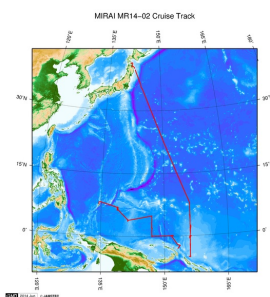
Underway CTD (Oceanscience)



### Data Format

ASCII readable format

### Related Information



[Enlarge Image](#)

#### MR14-02

Ship Name: MIRAI

Period: 2014-02-15 - 2014-03-23

Chief Scientist: Takuya Hasegawa (JAMSTEC)

Project Name: [Tropical Ocean Climate Study (TOCS)]

Proposal ▶ Tropical Ocean Climate Study

Title:

### Update History

2016-08-31	An observation data was registered.
------------	-------------------------------------

#### JAMSTEC

[Site Policy](#)  
[Privacy Policy](#)  
[Application for Data and Samples](#)  
[Data Policy](#)  
  
[What's New](#)  
[Update History](#)  
[Feeds](#)

#### Lists

[Publication List](#)  
[Amount of Public Info.](#)  
  
[Data](#)  
[Map Search](#)  
[Data Tree](#)  
[Detailed Search](#)

#### Information of the Ships

[NATSUSHIMA](#)  
[KAIYO](#)  
[YOKOSUKA](#)  
[MIRAI](#)  
[KAIREI](#)  
[CHIKYU](#)  
[KAIMEI](#)  
[SHINSEI MARU](#)  
[HAKUHO MARU](#)

#### Information of the Submersibles

[KAIKO](#)  
[SHINKAI 2000](#)  
[SHINKAI 6500](#)  
[DEEP TOW](#)  
[HYPER-DOLPHIN](#)  
[URASHIMA](#)  
[YOKOSUKA DEEP TOW](#)  
[6K Camera DEEP TOW](#)  
[6K Sonar DEEP TOW](#)  
[KM-ROV](#)  
[POWER GRAB SAMPLER \(SHELL\)](#)  
[POWER GRAB SAMPLER \(CLOW\)](#)  
[BMS](#)

#### Go to a Cruise Information

Cruise ID:

#### Go to a Dive Information

Dive ID:

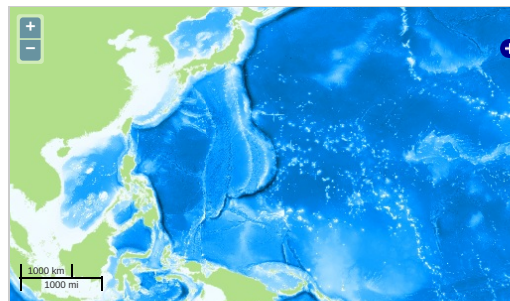
## MIRAI MR14-02 Underway CTD

Last Modified: 2016-08-31

[ReadMe](#) [Observation Data](#)

Cruise ID: [MR14-02](#)  
Underway CTD: Processed (PI)  
Data Policy: [JAMSTEC](#)  
Observation Items:  
Science Keywords:

### Observation Map



— ... Observation Line — ... Navigation ● ... Observation, Dive Point, Hole

Imagery reproduced from ...

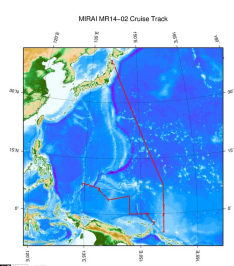
### Data List

[Add to Basket](#)

#### File names

☐ MR1402UCTD\_stationlist.pdf  
☐ u001c01.asc  
☐ u002c01.asc  
☐ u003c01.asc  
☐ u004c01.asc  
☐ u005c01.asc  
☐ u006c01.asc  
☐ u007c01.asc  
☐ u008c01.asc  
☐ u011c01\_SN145.asc  
☐ u011c01\_SN146.asc  
☐ u012c01\_SN145.asc  
☐ u012c01\_SN146.asc  
☐ u013c01\_SN145.asc  
☐ u013c01\_SN146.asc  
☐ u014c01\_SN145.asc  
☐ u014c01\_SN146.asc  
☐ u015c01\_SN145.asc  
☐ u015c01\_SN146.asc  
☐ u016c01\_SN145.asc  
☐ u016c01\_SN146.asc  
☐ u017c01\_SN145.asc  
☐ u017c01\_SN146.asc  
☐ u018c01\_SN145.asc  
☐ u018c01\_SN146.asc  
☐ u019c01\_SN145.asc  
☐ u019c01\_SN146.asc  
☐ u020c01\_SN145.asc  
☐ u020c01\_SN146.asc  
☐ u021c01\_SN145.asc  
☐ u021c01\_SN146.asc

### Related Information



[Enlarge Image](#)

#### MR14-02

Ship Name: MIRAI  
Period: 2014-02-15 - 2014-03-23  
Chief Scientist: Takuya Hasegawa (JAMSTEC)  
Project Name: [Tropical Ocean Climate Study (TOCS)]  
Proposal ▶ Tropical Ocean Climate Study  
Title:

### Update History

2016-08-31

An observation data was registerd.

#### JAMSTEC

[Site Policy](#)

[Privacy Policy](#)

[Application for Data and Samples](#)

[Data Policy](#)

#### What's New

[Update History](#)

[Feeds](#)

#### Lists

[Publication List](#)

[Amount of Public Info.](#)

#### Data

[Map Search](#)

[Data Tree](#)

[Detailed Search](#)

#### Information of the Ships

[NATSUSHIMA](#)

[KAIYO](#)

[YOKOSUKA](#)

[MIRAI](#)

[KAIREI](#)

[CHIKYU](#)

[KAIMEI](#)

[SHINSEI MARU](#)

[HAKUHO MARU](#)

#### Information of the Submersibles

[KAIKO](#)

[SHINKAI 2000](#)

[SHINKAI 6500](#)

[DEEP TOW](#)

[HYPER-DOLPHIN](#)

[URASHIMA](#)

[YOKOSUKA DEEP TOW](#)

[6K Camera DEEP TOW](#)

[6K Sonar DEEP TOW](#)

[KM-ROV](#)

[POWER GRAB SAMPLER \(SHELL\)](#)

[POWER GRAB SAMPLER \(CLOW\)](#)

[BMS](#)

#### Go to a Cruise Information

Cruise ID:

Go

#### Go to a Dive Information

Dive ID:



Go

Copyright 2011 Japan Agency for Marine-Earth Science and Technology



**JAMSTEC** 国立研究開発法人  
海洋研究開発機構  
JAPAN AGENCY FOR MARINE-EARTH SCIENCE AND TECHNOLOGY