

NATSUSHIMA NT09-05 Leg2 Depth, temperature and propeller data by micro data logger

Last Modified: 2012-09-28

[ReadMe](#) [Observation Data](#)

Cruise ID: [NT09-05 Leg2](#)

Depth, temperature and propeller data by micro data logger : Processed (PI)

Data Policy: [JAMSTEC](#)

Observation Items:

Science Keywords:

Data Information

Depth, temperature and propeller data at the bottom of Myojin Knoll (depth: 1200m) collected by micro data logger (data collection period; 11-16 April 2009, termination time: am 01:00:30, 16 April 2009). These data types are time-series data which measured at 32 Hz (H965-2).

Related Dive No. : HPD 00965 ~ HPD 00970

Cruise Report

http://www.godac.jamstec.go.jp/catalog/data/doc_catalog/media/NT09-05_leg2_all.pdf

For Using Data

Principal Investigator

Tomoko Koito (College of Bioresource Sciences, Nihon University)

Use Constraints

Nothing

Data Citation

Nothing

Instrument

Instrument:

Micro data logger (W2000-PD2GT)

Instrument Information:

It is a mico data logger for measuring temperature, depth and acceleration.

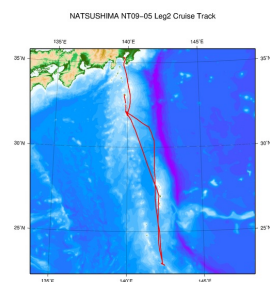


Data Format

Excel format (depth: m, temperature: degC, propeller: frequency/sec)

Related Information

☒ Cruise Data ☐ Dive Data



[Enlarge Image](#)

NT09-05 Leg2

Ship Name: NATSUSHIMA

Period: 2009-04-10 - 2009-04-20

Chief Scientist: Koji Inoue (The University of Tokyo)

Proposal ▶ Possible Role of a Taurine Transporter in Adaptation Mechanisms to Sulfides

Title:

Update History

2012-09-28 An observation data was registerd.

JAMSTEC
[Site Policy](#)
[Privacy Policy](#)
[Application for Data and Samples](#)
[Data Policy](#)
[What's New](#)
[Update History](#)
[Feeds](#)

[Lists](#)
[Publication List](#)
[Amount of Public Info.](#)
[Data](#)
[Map Search](#)
[Data Tree](#)
[Detailed Search](#)

[Information of the Ships](#)
NATSUSHIMA
KAIYO
YOKOSUKA
MIRAI
KAIREI
CHIKYU
KAIMEI
SHINSEI MARU
HAKUHO MARU

[Information of the Submersibles](#)
KAIKO
SHINKAI 2000
SHINKAI 6500
DEEP TOW
HYPER-DOLPHIN
URASHIMA
YOKOSUKA DEEP TOW
6K Camera DEEP TOW
6K Sonar DEEP TOW
KM-ROV
POWER GRAB SAMPLER (SHELL)
POWER GRAB SAMPLER (CLOW)
BMS

Go to a Cruise Information

Cruise ID:

Go to a Dive Information

Dive ID:



NATSUSHIMA NT09-05 Leg2 Depth, temperature and propeller data by micro data logger

Last Modified: 2012-09-28

[ReadMe](#) [Observation Data](#)

Cruise ID: [NT09-05 Leg2](#)

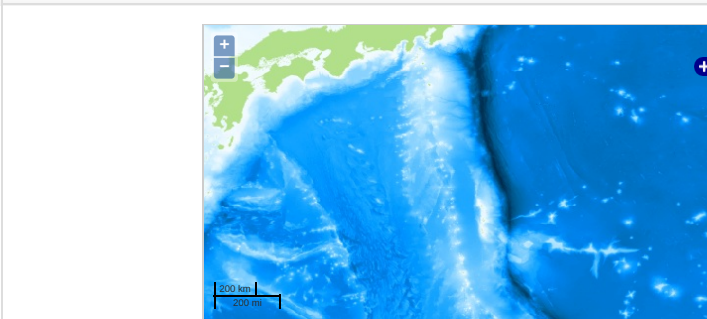
Depth, temperature and propeller data by micro data logger Processed (PI)

Data Policy: [JAMSTEC](#)

Observation Items:

Science Keywords:

Observation Map



Imagery reproduced from ...

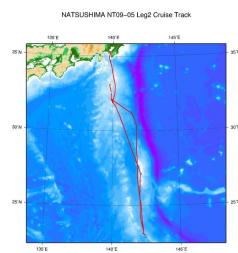
Data List

File names

☐ NT09-05_leg2_H965-2loggerdata.xls

Related Information

☒ Cruise Data ☐ Dive Data



[Enlarge Image](#)

NT09-05 Leg2

Ship Name: NATSUSHIMA

Period: 2009-04-10 - 2009-04-20

Chief Scientist: Koji Inoue (The University of Tokyo)

Proposal ▶ Possible Role of a Taurine Transporter in Adaptation Mechanisms to Sulfides

Title:

Update History

2012-09-28 An observation data was registerd.

JAMSTEC

[Site Policy](#)

[Privacy Policy](#)

[Application for Data and Samples](#)

[Data Policy](#)

What's New

[Update History](#)

[Feeds](#)

Lists

[Publication List](#)

[Amount of Public Info.](#)

Data

[Map Search](#)

[Data Tree](#)

[Detailed Search](#)

Information of the Ships

[NATSUSHIMA](#)

[KAIYO](#)

[YOKOSUKA](#)

[MIRAI](#)

[KAIREI](#)

[CHIKYU](#)

[KAIMEI](#)

[SHINSEI MARU](#)

[HAKUHO MARU](#)

Information of the Submersibles

[KAIKO](#)

[SHINKAI 2000](#)

[SHINKAI 6500](#)

[DEEP TOW](#)

[HYPER-DOLPHIN](#)

[URASHIMA](#)

[YOKOSUKA DEEP TOW](#)

[6K Camera DEEP TOW](#)

[6K Sonar DEEP TOW](#)

[KM-ROV](#)

[POWER GRAB SAMPLER \(SHELL\)](#)

[POWER GRAB SAMPLER \(CLOW\)](#)

[BMS](#)

Go to a Cruise Information

Cruise ID:

Go to a Dive Information

Dive ID:

