

MIRAI MR14-01 Bottle Sampling Water Chemical Analysis

Last Modified: 2017-07-28

[ReadMe](#) [Observation Data](#) [Data Format](#) [Quality Information](#)

Cruise ID: [MR14-01](#)

Bottle Sampling Water Chemical Analysis: Processed (DMO)-QCed

Data Policy: [JAMSTEC](#)

Observation Items: Temperature, Salinity, Dissolved oxygen, Potential temperature

Science Keywords:

OCEANS > OCEAN CHEMISTRY > OXYGEN
OCEANS > OCEAN CHEMISTRY > SALINITY
OCEANS > OCEAN TEMPERATURE > WATER TEMPERATURE
OCEANS > SALINITY/DENSITY > SALINITY
OCEANS > OCEAN TEMPERATURE > POTENTIAL TEMPERATURE

Cruise Report

http://www.godac.jamstec.go.jp/catalog/data/doc_catalog/media/MR14-01_all.pdf

For Using Data

Principal Investigator

CTDTMP : Iwao Ueki (JAMSTEC)
CTDSAL : Iwao Ueki (JAMSTEC)
SALNTY : Iwao Ueki (JAMSTEC)
CTDOXY : Iwao Ueki (JAMSTEC)

Use Constraints

See [Terms and Conditions](#) about constrain of use.

Data Citation

See [Terms and Conditions](#) about data citation.

Instrument

Instrument:

Salinity measurement system



Information on CTD data

Pressure sensor

Model : SBE9plus, Sea-Bird Electronics, Inc.
Measurement range : 0 to 10500 m
Accuracy : $\pm 0.015\%$ of full scale range
Resolution : 0.001% of full scale

Temperature sensor

Model : SBE3, Sea-Bird Electronics, Inc.
Measurement range : -5 to +35 °C
Accuracy : ± 0.001 °C
Resolution : 0.0002 °C

Salinity sensor

Model : SBE4, Sea-Bird Electronics, Inc.
Measurement range : 0 to 7 S/m
Accuracy : ± 0.0003 S/m
Resolution : 0.00004 S/m

DO sensor

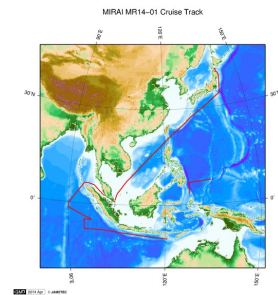
Model : SBE43, Sea-Bird Electronics, Inc.
Measurement range : 120% of surface saturation
Accuracy : $\pm 2\%$ of saturation

Information on Chemical and Biological data

Salinity

Instruments : Autosal salinometer model 8400B (Guildline Instruments Ltd.)
Methods : -
Precision : The average and standard deviation of absolute difference among 7 pairs of replicate samples were 0.0003 and 0.0003 in salinity
Reference Material/Calibration : IAPSO Standard Sea Water batch P154 (Ocean Scientific International Ltd.)

Related Information



 [Enlarge Image](#)

MR14-01

Ship Name: MIRAI

Period: 2014-01-08 - 2014-02-13

Chief Scientist: Iwao Ueki (JAMSTEC)

Project Name: [Tropical Ocean Climate Study (TOCS)]

Proposal ▶ Tropical Ocean Climate Study/Operation of TRITON Buoy

Title:

Update History

2017-07-28	An observation data was registered.
2016-02-19	An observation data was registered.

JAMSTEC

[Site Policy](#)

[Privacy Policy](#)

[Application for Data and Samples](#)

[Data Policy](#)

What's New

[Update History](#)

[Feeds](#)

Lists

[Publication List](#)

[Amount of Public Info.](#)

Data

[Map Search](#)

[Data Tree](#)

[Detailed Search](#)

Information of the Ships

[NATSUSHIMA](#)

[KAIYO](#)

[YOKOSUKA](#)

[MIRAI](#)

[KAIREI](#)

[CHIKYU](#)

[KAIMEI](#)

[SHINSEI MARU](#)

[HAKUHO MARU](#)

Information of the Submersibles

[KAIKO](#)

[SHINKAI 2000](#)

[SHINKAI 6500](#)

[DEEP TOW](#)

[HYPER-DOLPHIN](#)

[URASHIMA](#)

[YOKOSUKA DEEP TOW](#)

[6K Camera DEEP TOW](#)

[6K Sonar DEEP TOW](#)

[KM-ROV](#)

[POWER GRAB SAMPLER \(SHELL\)](#)

[POWER GRAB SAMPLER \(CLOW\)](#)

[BMS](#)

Go to a Cruise Information

Cruise ID:

Go

Go to a Dive Information

Dive ID:

Go

Copyright 2011 Japan Agency for Marine-Earth Science and Technology



JAMSTEC

国立研究開発法人
海洋研究開発機構
JAPAN AGENCY FOR MARINE-EARTH SCIENCE AND TECHNOLOGY

MIRAI MR14-01 Bottle Sampling Water Chemical Analysis

Last Modified: 2017-07-28

[ReadMe](#) [Observation Data](#) [Data Format](#) [Quality Information](#)

Cruise ID: [MR14-01](#)

Bottle Sampling Water Chemical Analysis: Processed (DMO)-QCed

Data Policy: [JAMSTEC](#)

Exchange Format

Provided in the Exchange Format of CCHDO (CLIVAR and Carbon Hydrographic Data Office).

Please see the following link for details of Exchange Format.

[CCHDO | CLIVAR & Carbon Hydrographic Data Office](#)

Format Information

Column No.	Column Heading Mnemonic	Units Mnemonic	Reporting Precision	FORTTRAN Format	Comments
1	EXPCODE		A14		ExpoCode
2	SECT_ID		A6		Section ID
3	STNNBR		A6		Station Number
4	CASTNO		I3		Cast Number
5	SAMPNO		A7		Sample Number
6	BTLNBR		A7		Bottle Number
7	BTLNBR_FLAG_W		I1		Bottle quality flags
8	DATE		I8		Cast date
9	TIME	UTC	A4		Cast time
10	LATITUDE	DEG	F8.4		-
11	LONGITUDE	DEG	F9.4		-
12	DEPTH	METERS	I5		Bottom depth
13	CTDDPT	METERS	F9.1		Depth
14	CTDDPT_FLAG_W		I1		Quality flags for CTD data
15	CTDPRS	DBAR	F9.1		Pressure
16	CTDPRS_FLAG_W		I1		Quality flags for CTD data
17	CTDTMP	ITS-90	F9.4		Temperature
18	CTDTMP_FLAG_W		I1		Quality flags for CTD data
19	CTDTMP_1	ITS-90	F9.4		Temperature (secondary sensor)
20	CTDTMP_1_FLAG_W		I1		Quality flags for CTD data
21	CTDSAL	PSS-78	F9.4		Salinity
22	CTDSAL_FLAG_W		I1		Quality flags for CTD data
23	CTDSAL_1	PSS-78	F9.4		Salinity (secondary sensor)
24	CTDSAL_1_FLAG_W		I1		Quality flags for CTD data
25	SALNTY	PSS-78	F9.4		Bottle Salinity
26	SALNTY_FLAG_W		I1		Quality flags for water samples
27	SALNTY_1	PSS-78	F9.4		Bottle Salinity (duplicate)
28	SALNTY_1_FLAG_W		I1		Quality flags for water samples
29	CTDOXY	UMOL/KG	F9.2		Oxygen_CTD
30	CTDOXY_FLAG_W		I1		Quality flags for CTD data
31	CTDOXY_1	UMOL/KG	F9.2		Oxygen_CTD (secondary sensor)
32	CTDOXY_1_FLAG_W		I1		Quality flags for CTD data
33	THETA	DEG C	F9.4		Potential temperature
34	THETA_1	DEG C	F9.4		Potential temperature (secondary sensor)

ODV Format

Please see the following link for details of ODV Format and ODV Software.

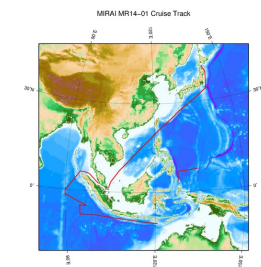
[Ocean Data View \(ODV\)](#)

Format Information

Column No.	Column Heading	Comments
1	Cruise	Cruise Label
2	Station	Station number_Cast number
3	Type	Station type
4	mon/day/yr	Cast date
5	hh:mm	Cast time
6	Latitude [degrees_north]	-
7	Longitude [degrees_east]	-
8	Bot. Depth [METERS]	Bottom depth
9	CTDDPT[METERS]	Depth
10	QF	Quality flags for CTD data
11	CTDPRS[DBAR]	Pressure
12	QF	Quality flags for CTD data
13	CTDTMP[ITS-90]	Temperature
14	QF	Quality flags for CTD data
15	CTDTMP_1[ITS-90]	Temperature (secondary sensor)
16	QF	Quality flags for CTD data
17	CTDSAL[PSS-78]	Salinity
18	QF	Quality flags for CTD data
19	CTDSAL_1[PSS-78]	Salinity (secondary sensor)
20	QF	Quality flags for CTD data
21	SALNTY[PSS-78]	Bottle Salinity
22	QF	Quality flags for water samples
23	SALNTY_1[PSS-78]	Bottle Salinity (duplicate)
24	QF	Quality flags for water samples
25	CTDOXY[UMOL/KG]	Oxygen_CTD

Column No.	Column Heading	Comments
26	QF	Quality flags for CTD data
27	CTDOXY_1[UMOL/KG]	Oxygen_CTD (secondary sensor)
28	QF	Quality flags for CTD data
29	THETA[DEG C]	Potential temperature
30	QF	Quality flags for CTD data
31	THETA_1[DEG C]	Potential temperature (secondary sensor)
32	QF	Quality flags for CTD data
33	SAMPNO	Sample Number
34	QF	Bottle quality flags

Related Information



[Enlarge Image](#)

MR14-01

Ship Name: MIRAI
Period: 2014-01-08 - 2014-02-13
Chief Scientist: Iwao Ueki (JAMSTEC)
Project Name: [Tropical Ocean Climate Study (TOCS)]
Proposal ▶ Tropical Ocean Climate Study/Operation of TRITON Buoy
Title:

Update History

2017-07-28	An observation data was registered.
2016-02-19	An observation data was registered.

JAMSTEC

Site Policy
Privacy Policy
Application for Data and Samples
Data Policy
What's New
Update History
Feeds

Lists

Publication List
Amount of Public Info.
Data
Map Search
Data Tree
Detailed Search

Information of the Ships

NATSUSHIMA
KAIYO
YOKOSUKA
MIRAI
KAIREI
CHIKYU
KAIMEI
SHINSEI MARU
HAKUHO MARU

Information of the Submersibles

KAIKO
SHINKAI 2000
SHINKAI 6500
DEEP TOW
HYPER-DOLPHIN
URASHIMA
YOKOSUKA DEEP TOW
6K Camera DEEP TOW
6K Sonar DEEP TOW
KM-ROV
POWER GRAB
SAMPLER (SHELL)
POWER GRAB
SAMPLER (CLOW)
BMS

Go to a Cruise Information

Cruise ID:

Go to a Dive Information

Dive ID:

Copyright 2011 Japan Agency for Marine-Earth Science and Technology



JAMSTEC
JAPAN AGENCY FOR MARINE-EARTH SCIENCE AND TECHNOLOGY

国立研究開発法人
海洋研究開発機構

MIRAI MR14-01 Bottle Sampling Water Chemical Analysis

Last Modified: 2017-07-28

[ReadMe](#) [Observation Data](#) [Data Format](#) [Quality Information](#)

Cruise ID: [MR14-01](#)

Bottle Sampling Water Chemical Analysis: Processed (DMO)-QCed

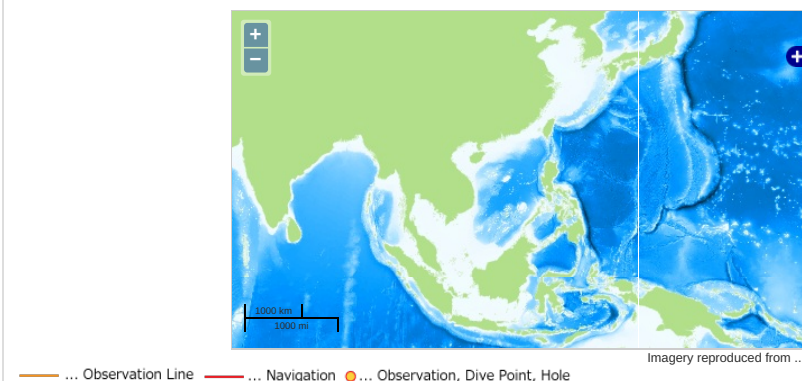
Data Policy: [JAMSTEC](#)

Observation Items: Temperature, Salinity, Dissolved oxygen, Potential temperature

Science Keywords:

OCEANS > OCEAN CHEMISTRY > OXYGEN
OCEANS > OCEAN CHEMISTRY > SALINITY
OCEANS > OCEAN TEMPERATURE > WATER TEMPERATURE
OCEANS > SALINITY/DENSITY > SALINITY
OCEANS > OCEAN TEMPERATURE > POTENTIAL TEMPERATURE

Observation Map



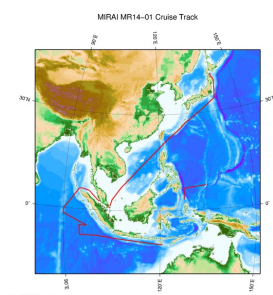
Data List

☐ File names

☐ MR140100_ex_bot.csv

☐ MR140100_odv_bot.txt

Related Information



[Enlarge Image](#)

MR14-01

Ship Name: MIRAI

Period: 2014-01-08 - 2014-02-13

Chief Scientist: Iwao Ueki (JAMSTEC)

Project Name: [Tropical Ocean Climate Study (TOCS)]

Proposal ▶ Tropical Ocean Climate Study/Operation of TRITON Buoy

Title:

Update History

2017-07-28	An observation data was registered.
2016-02-19	An observation data was registered.

JAMSTEC

[Site Policy](#)
[Privacy Policy](#)
[Application for Data and Samples](#)
[Data Policy](#)

What's New

[Update History](#)
[Feeds](#)

Lists

[Publication List](#)
[Amount of Public Info.](#)

Data

[Map Search](#)
[Data Tree](#)
[Detailed Search](#)

Information of the Ships

NATSUSHIMA
KAIYO
YOKOSUKA
MIRAI
KAIREI
CHIKYU
KAIMEI
SHINSEI MARU
HAKUHO MARU

Information of the Submersibles

KAIKO
SHINKAI 2000
SHINKAI 6500
DEEP TOW
HYPER-DOLPHIN
URASHIMA
YOKOSUKA DEEP TOW
6K Camera DEEP TOW
6K Sonar DEEP TOW
KM-ROV
POWER GRAB SAMPLER (SHELL)
POWER GRAB SAMPLER (CLOW)
BMS

Go to a Cruise Information

Cruise ID:

Go to a Dive Information

Dive ID:

