

MIRAI MR06-05 Leg2 Underway Thermosalinograph

Last Modified: 2017-06-29

[ReadMe](#)

[Observation
Data](#)

[Data Format](#)

Cruise ID: [MR06-05 Leg2](#)

Underway Thermosalinograph: Processed (DMO)-QCed

Data Policy: [JAMSTEC](#)

Observation Items: Temperature, Salinity, Dissolved oxygen

Science Keywords:

OCEANS	> OCEAN CHEMISTRY	> OXYGEN
OCEANS	> SALINITY/DENSITY	> SALINITY
OCEANS	> OCEAN	> SEA SURFACE
	TEMPERATURE	TEMPERATURE

Cruise Report

http://www.godac.jamstec.go.jp/catalog/data/doc_catalog/media/MR06-05_leg2_all.pdf

For Using Data

Principal Investigator

Data Management Office

Use Constraints

See [Terms and Conditions](#) about constrain of use.

Data Citation

See [Terms and Conditions](#) about data citation.

Instrument

Instrument:

Continuous sea surface water
monitoring system (- MR10-03 Leg2)



Overview

Thermosalinograph measures the following surface parameters continuously.

- temperature
- salinity
- dissolved oxygen

Sea surface water is continuously pumped up at 4.5 meters depth to the sea surface monitoring laboratory and then flowed into each analysis equipment through a steel pipe and a vinyl-chloride pipe.

The flow rate of this system is controlled by some valves. Data are recorded in the personal computer.

System

- Temperature sensor
Model : SBE 3S, Sea-Bird Electronics, Inc.
Serial number : 2607
Measurement range : -5 to 35 deg-C (ITS-90)
Sensor location : Bow thruster room
- Salinity sensor
SEACAT THERMOSALINOGRAPH
Model : SBE-21, Sea-Bird Electronics, Inc.
Serial number : 3126
Measurement range : [temperature] -5 to +35 deg-C (ITS-90), [conductivity] 0 to 6.5 S/m
Sensor location : Sea surface monitoring laboratory
- DO sensor
Model : 2127A, Hach Ultra Analytics Japan Inc.
Serial number : 47477
Measurement range : 0 to 14 ppm
Sensor location : Sea surface monitoring laboratory

Data acquisition

Date/Time (UTC)	Start/Stop	Remarks
2006/11/28, 23:01	start	02-47.57N, 077-08.53E
2006/12/10, 11:00	stop	03-15.66N, 091-55.06E
2006/12/11, 22:01	start	05-44.23N, 098-38.88E
2006/12/12, 10:00	stop	03-26.57N, 100-20.37E

Calibration Information

Calibration Information is as follows.

[Calibration Information](#)

Data processing

- (1) Quality control
QCed data were added flag according to the NODC (National Oceanographic Data Center) quality control procedure.
 - 1) The gradient check of adjacent depth dataPlease see the site of NODC of the following link for quality control procedure in detail.
[QUALITY CONTROL AND PROCESSING OF HISTORICAL OCEANOGRAPHIC TEMPERATURE, SALINITY, AND OXYGEN DATA](#)
In addition, an abnormal value is identified by a visual check, and the data after visual QC is released.

Note

- (1) In this cruise, there is extra data (fluorescence intensity) in additional to temperature, salinity, dissolved oxygen that has been opened to the public. Please contact us from "Contact Us" above if necessary.

Related Information

MR06-05 Leg2 Cruise Track



 [Enlarge Image](#)

MR06-05 Leg2

Ship Name: MIRAI

Period: 2006-11-28 - 2006-12-13

Chief Scientist: Yoshifumi Kuroda (JAMSTEC)

Project Name: [Mirai Indian ocean cruise for the Study of the MJO convection Onset,MJO Research,Tropical Ocean Climate Study (TOCS)]

Update History

2017-06-29	An observation data was registerd.
2014-07-30	An observation data was registerd.
2014-03-08	An observation data was registerd.
2012-11-25	An observation data was registerd.

JAMSTEC

Site Policy

Privacy Policy

Application for Data and Samples

Data Policy

What's New

Update History

Feeds

Lists

Publication List

Amount of Public Info.

Data

Map Search

Data Tree

Detailed Search

Information of the Ships

NATSUSHIMA

KAIYO

YOKOSUKA

MIRAI

KAIREI

CHIKYU

KAIIMEI

SHINSEI MARU

HAKUHO MARU

Information of the Submersibles

KAIKO

SHINKAI 2000

SHINKAI 6500

DEEP TOW

HYPER-DOLPHIN

URASHIMA

YOKOSUKA DEEP TOW

6K Camera DEEP TOW

6K Sonar DEEP TOW

KM-ROV

POWER GRAB

SAMPLER (SHELL)

POWER GRAB

SAMPLER (CLOW)

BMS

Go to a Cruise Information

Cruise ID:

Go to a Dive Information

Dive ID:

 **JAMSTEC** 国立研究開発法人
海洋研究開発機構
JAPAN AGENCY FOR MARINE-EARTH SCIENCE AND TECHNOLOGY

Copyright 2011 Japan Agency for Marine-Earth Science and Technology

MIRAI MR06-05 Leg2 Underway Thermosalinograph

Last Modified: 2017-06-29

[ReadMe](#) [Observation Data](#) [Data Format](#)

 Cruise ID: [MR06-05 Leg2](#)

Underway Thermosalinograph: Processed (DMO)-QCed

 Data Policy: [JAMSTEC](#)

TSG DMO (MR98-K01 - MR10-03)

Format Description for the Corrected Data

Please see the site of each cruise.

Format Description for the QCed Data (MR98-K01 - MR10-03)

Each data file contains one line header (meta data) followed by data lines for one day.

The number of data lines are recorded in the header.

Header part

No.	Column	Content	Format	Remarks
1	1	Header ID	a1	fixed as '#'
2	3 - 6	Data ID	a4	TSG
3	8 - 22	Cruise ID	a15	MYYY-(K)XX(_legx)
4	68 - 71	Number of data lines	i4	
5	72 - 73	Terminator	-	CR+LF

Data part

No.	Column	Content	Unit	Format	Remarks
1	1 - 8	Date	-	i8	YYYYMMDD (UTC)
2	10 - 13	Time	-	i4	hhmm (UTC)
3	15 - 23	Latitude	-	i2,a1,f5.2,a1	dd-mm.mmN(S)
4	25 - 34	Longitude	-	i3,a1,f5.2,a1	ddd-mm.mmE(W)
5	35 - 45	Temperature	deg-C	f11.4	ITS-90
6	46 - 56	Salinity	PSU	f11.4	PSS-78
7	57 - 67	Dissolved oxygen	mg/l	f11.4	
8	68 - 78	Flag	-	i11	1 - 6 : space 7 : flag of date/time 8 : flag of latitude/longitude 9 : flag of temperature 10 : flag of salinity 11 : flag of dissolved oxygen * reference : Definition of Quality Control Flags
9	79 - 80	Terminator	-	-	CR+LF

Definition of Quality Control Flags

1. Depth Flags

- 0 - accepted value
- 1 - error in recorded depth (same or less than previous depth)
- 2 - density inversion

2. Observed Level Flags

- N - missing value
- 0 - accepted value
- 1 - range outlier (outside of broad range check)
- 2 - failed inversion check
- 3 - failed gradient check
- 4 - zero anomaly
- 5 - failed combined gradient and inversion checks
- 6 - failed range and inversion checks
- 7 - failed range and gradient checks
- 8 - failed range and zero anomaly checks
- 9 - failed range and combined gradient and inversion checks
- A - failed visual check

* The check only about range check for Thermosalinograph data.

3. Date and time flag (Thermosalinograph only)

- 0 - accepted data and time
- 1 - failed duplicate/missing/incorrect date and time

4. Position flag (Thermosalinograph only)

- 0 - accepted position
- 1 - failed estimated ship speed check including missing/incorrect position

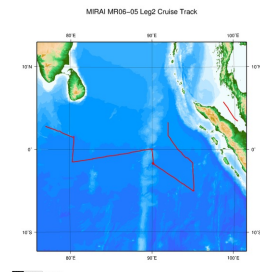
QCed data were added flag according to the NODC (National Oceanographic Data Center) quality control procedure, additionally visually checked. Please see the site of NODC of the following link for quality control procedure.

[QUALITY CONTROL AND PROCESSING OF HISTORICAL OCEANOGRAPHIC TEMPERATURE, SALINITY, AND OXYGEN DATA](#)

Sample Program

[ex_read.f](#)

Related Information



 [Enlarge Image](#)

MR06-05 Leg2

Ship Name: MIRAI

Period: 2006-11-28 - 2006-12-13

Chief Scientist: Yoshifumi Kuroda (JAMSTEC)

Project Name: [Mirai Indian ocean cruise for the Study of the MJO convection Onset,MJO Research,Tropical Ocean Climate Study (TOCS)]

Update History

2017-06-29	An observation data was registerd.
2014-07-30	An observation data was registerd.
2014-03-08	An observation data was registerd.
2012-11-25	An observation data was registerd.

JAMSTEC

[Site Policy](#)

[Privacy Policy](#)

[Application for Data and Samples](#)

[Data Policy](#)

[What's New](#)

[Update History](#)

[Feeds](#)

Lists

[Publication List](#)

[Amount of Public Info.](#)

Data

[Map Search](#)

[Data Tree](#)

[Detailed Search](#)

Information of the Ships

[NATSUSHIMA](#)

[KAIYO](#)

[YOKOSUKA](#)

[MIRAI](#)

[KAIREI](#)

[CHIKYU](#)

[KAIMEI](#)

[SHINSEI MARU](#)

[HAKUHO MARU](#)

Information of the Submersibles

[KAIKO](#)

[SHINKAI 2000](#)

[SHINKAI 6500](#)

[DEEP TOW](#)

[HYPER-DOLPHIN](#)

[URASHIMA](#)

[YOKOSUKA DEEP TOW](#)

[6K Camera DEEP TOW](#)

[6K Sonar DEEP TOW](#)

[KM-ROV](#)

[POWER GRAB](#)

[SAMPLER \(SHELL\)](#)

[POWER GRAB](#)

[SAMPLER \(CLOW\)](#)

[BMS](#)

Go to a Cruise Information

Cruise ID:

Go to a Dive Information

Dive ID:

Copyright 2011 Japan Agency for Marine-Earth Science and Technology



JAMSTEC 国立研究開発法人
海洋研究開発機構
JAPAN AGENCY FOR MARINE-EARTH SCIENCE AND TECHNOLOGY

MIRAI MR06-05 Leg2 Underway Thermosalinograph

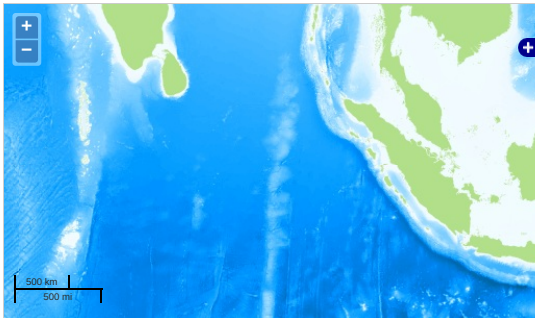
Last Modified: 2017-06-29

[ReadMe](#) [Observation Data](#) [Data Format](#)

Cruise ID: [MR06-05 Leg2](#)
Underway Thermosalinograph: Processed (DMO)-QCed
Data Policy: [JAMSTEC](#)
Observation Items: Temperature, Salinity, Dissolved oxygen

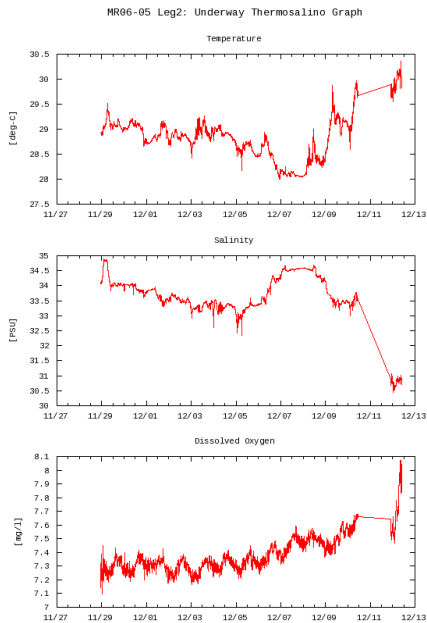
Science Keywords:
OCEANS > OCEAN CHEMISTRY > OXYGEN
OCEANS > SALINITY/DENSITY > SALINITY
OCEANS > OCEAN > SEA SURFACE
TEMPERATURE TEMPERATURE

Observation Map



— ... Observation Line — ... Navigation ● ... Observation, Dive Point, Hole Imagery reproduced from ...

Figures



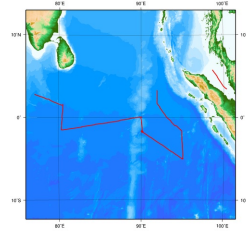
Data List


Add to Basket

<input type="checkbox"/>	File names
<input type="checkbox"/>	20061128.dat
<input type="checkbox"/>	20061129.dat
<input type="checkbox"/>	20061130.dat
<input type="checkbox"/>	20061201.dat
<input type="checkbox"/>	20061202.dat
<input type="checkbox"/>	20061203.dat
<input type="checkbox"/>	20061204.dat
<input type="checkbox"/>	20061205.dat
<input type="checkbox"/>	20061206.dat
<input type="checkbox"/>	20061207.dat
<input type="checkbox"/>	20061208.dat
<input type="checkbox"/>	20061209.dat
<input type="checkbox"/>	20061210.dat
<input type="checkbox"/>	20061211.dat
<input type="checkbox"/>	20061212.dat
<input type="checkbox"/>	ex_read.f (Sample Program)

Related Information

MIRAI MR06-05 Leg2 Cruise Track



 [Enlarge Image](#)

MR06-05 Leg2
Ship Name: MIRAI
Period: 2006-11-28 - 2006-12-13
Chief Scientist: Yoshifumi Kuroda (JAMSTEC)
Project Name: [Mirai Indian ocean cruise for the Study of the MJO convection Onset,MJO Research,Tropical Ocean Climate Study (TOCS)]

Update History

2017-06-29	An observation data was registerd.
2014-07-30	An observation data was registerd.
2014-03-08	An observation data was registerd.
2012-11-25	An observation data was registerd.

JAMSTEC

- Site Policy
- Privacy Policy
- Application for Data and Samples
- Data Policy
- What's New
- Update History
- Feeds

Lists

- Publication List
- Amount of Public Info.
- Data
- Map Search
- Data Tree
- Detailed Search

Information of the Ships

- NATSUSHIMA
- KAIYO
- YOKOSUKA
- MIRAI
- KAIREI
- CHIKYU
- KAIIMEI
- SHINSEI MARU
- HAKUHO MARU

Information of the Submersibles

- KAIKO
- SHINKAI 2000
- SHINKAI 6500
- DEEP TOW
- HYPER-DOLPHIN
- URASHIMA
- YOKOSUKA DEEP TOW
- 6K Camera DEEP TOW
- 6K Sonar DEEP TOW
- KM-ROV
- POWER GRAB
- SAMPLER (SHELL)
- POWER GRAB
- SAMPLER (CLOW)
- BMS

Go to a Cruise Information

Cruise ID:

Go to a Dive Information

Dive ID: