

KAIMEI KM16-06 Precipitable water vapor (GNSS water vapor)

Last Modified: 2018-08-15

[ReadMe](#) [Observation Data](#) [Data Format](#)

Cruise ID: [KM16-06](#)

Precipitable water vapor (GNSS water vapor): Processed (DMO)-Corrected

Data Policy: [JAMSTEC](#)

Observation Items: Precipitable water vapor (GNSS water vapor)

Science Keywords:

ATMOSPHERE > ATMOSPHERIC WATER VAPOR > WATER VAPOR

For Using Data

Principal Investigator

Data Management Office

Use Constraints

See [Terms and Conditions](#) about constrain of use.

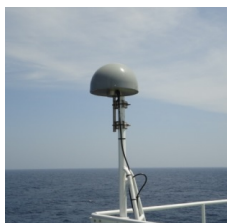
Data Citation

See [Terms and Conditions](#) about data citation.

Instrument

Instrument:

GPS water vapor observation system



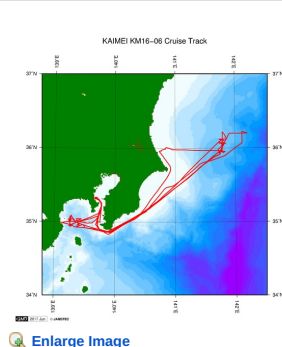
Overview

The data provided here is precipitable water vapor (column water vapor) estimated from GNSS observation on R/V KAIMEI. See [here](#) for detailed processing methods.

Measurement System

GNSS receiver [model/manufacture]:	NetR9 Ti-1/Trimble
GNSS antenna [model/manufacture]:	GNSS-Ti Choke Ring Antenna with radome/Trimble
Antenna location:	compass deck (18 meters high from sea surface)
Received satellite:	GPS, GLONASS, QZSS
Sampling interval:	30 sec
Elevation mask:	5 degrees (However, set to 10 degrees in the data processing provided here)

Related Information



KM16-06

Ship Name: KAIMEI

Period: 2016-08-02 - 2016-08-15

Chief Scientist: Katsuhisa Maeno (JAMSTEC)

 [Enlarge Image](#)

Update History

2018-08-15 An observation data was registered.

JAMSTEC

[Site Policy](#)
[Privacy Policy](#)
[Application for Data and Samples](#)
[Data Policy](#)

What's New

[Update History](#)
[Feeds](#)

Lists

[Publication List](#)
[Amount of Public Info.](#)

Data

[Map Search](#)
[Data Tree](#)
[Detailed Search](#)

Information of the Ships

[NATSUSHIMA](#)
[KAIYO](#)
[YOKOSUKA](#)
[MIRAI](#)
[KAIREI](#)
[CHIKYU](#)
[KAIMEI](#)
[SHINSEI MARU](#)
[HAKUHO MARU](#)

Information of the Submersibles

[KAIKO](#)
[SHINKAI 2000](#)
[SHINKAI 6500](#)
[DEEP TOW](#)
[HYPER-DOLPHIN](#)
[URASHIMA](#)
[YOKOSUKA DEEP TOW](#)
[6K Camera DEEP TOW](#)
[6K Sonar DEEP TOW](#)
[KM-ROV](#)
[POWER GRAB SAMPLER \(SHELL\)](#)
[POWER GRAB SAMPLER \(CLOW\)](#)
[BMS](#)

Go to a Cruise Information

Cruise ID:

Go to a Dive Information

Dive ID:



KAIMEI KM16-06 Precipitable water vapor (GNSS water vapor)

Last Modified: 2018-08-15

[ReadMe](#) [Observation Data](#) [Data Format](#)

Cruise ID: **KM16-06**

Precipitable water vapor (GNSS water vapor) Processed (DMO)-Corrected

Data Policy: [JAMSTEC](#)

Precipitable water vapor (GNSS water vapor)

Single space separated.

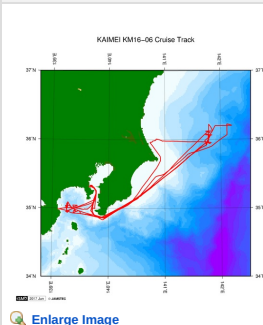
No.	Column	Content	Unit	Format (nodata or baddata)	Remarks
1	1-8	Date [YYYYMMDD]		i8	Every 10 minutes* * Time stamp is set at the end of average
2	10-13	Time [hhmm]		i4	Every 10 minutes*
3	15-24	Longitude [-180 to 180]	degree	f10.5 (999.99999)	Location at time stamp +:East longitude -:West longitude
4	26-34	Latitude [-90 to 90]	degree	f9.5 (999.99999)	Location at time stamp +:North latitude -:South latitude
5	36-41	Precipitable water vapor (column water vapor)	mm	f6.2 (999.99)	10-minute mean*

Data Example

```

YYYYMMDD hhmm Lon Lat PWV
20170422 0030 130.92555 33.93327 15.15
20170422 0040 130.93252 33.94054 15.20
20170422 0050 130.95647 33.95871 15.28
20170422 0100 130.99144 33.97308 15.47
    
```

Related Information



[Enlarge Image](#)

KM16-06

Ship Name: KAIMEI
Period: 2016-08-02 - 2016-08-15
Chief Scientist: Katsuhisa Maeno (JAMSTEC)

Update History

2018-08-15 An observation data was registered.

JAMSTEC
[Site Policy](#)
[Privacy Policy](#)
[Application for Data and Samples](#)
[Data Policy](#)
What's New
[Update History](#)
[Feeds](#)

Lists
[Publication List](#)
[Amount of Public Info.](#)
Data
[Map Search](#)
[Data Tree](#)
[Detailed Search](#)

Information of the Ships
NATSUSHIMA
KAIYO
YOKOSUKA
MIRAI
KAIREI
CHIKYU
KAIMEI
SHINSEI MARU
HAKUHO MARU

Information of the Submersibles
KAIKO
SHINKAI 2000
SHINKAI 6500
DEEP TOW
HYPER-DOLPHIN
URASHIMA
YOKOSUKA DEEP TOW
6K Camera DEEP TOW
6K Sonar DEEP TOW
KM-ROV
POWER GRAB
SAMPLER (SHELL)
POWER GRAB
SAMPLER (CLOW)
BMS

Go to a Cruise Information

Cruise ID:

Go to a Dive Information

Dive ID:

KAIMEI KM16-06 Precipitable water vapor (GNSS water vapor)

Last Modified: 2018-08-15

[ReadMe](#) [Observation Data](#) [Data Format](#)

Cruise ID: [KM16-06](#)

Precipitable water vapor (GNSS water vapor): Processed (DMO)-Corrected

Data Policy: [JAMSTEC](#)

Observation Items: Precipitable water vapor (GNSS water vapor)

Science Keywords:

ATMOSPHERE > ATMOSPHERIC WATER VAPOR > WATER VAPOR

Observation Map

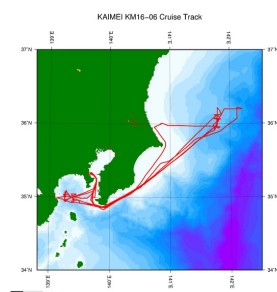


Data List

File names

☐ KM16-06_gnsspww.dat

Related Information



[Enlarge Image](#)

KM16-06

Ship Name: KAIMEI

Period: 2016-08-02 - 2016-08-15

Chief Scientist: Katsuhisa Maeno (JAMSTEC)

Update History

2018-08-15 An observation data was registered.

JAMSTEC

[Site Policy](#)

[Privacy Policy](#)

[Application for Data and Samples](#)

[Data Policy](#)

[What's New](#)

[Update History](#)

[Feeds](#)

Lists

[Publication List](#)

[Amount of Public Info.](#)

Data

[Map Search](#)

[Data Tree](#)

[Detailed Search](#)

Information of the Ships

[NATSUSHIMA](#)

[KAIYO](#)

[YOKOSUKA](#)

[MIRAI](#)

[KAIREI](#)

[CHIKYU](#)

[KAIMEI](#)

[SHINSEI MARU](#)

[HAKUHO MARU](#)

Information of the Submersibles

[KAIKO](#)

[SHINKAI 2000](#)

[SHINKAI 6500](#)

[DEEP TOW](#)

[HYPER-DOLPHIN](#)

[URASHIMA](#)

[YOKOSUKA DEEP TOW](#)

[6K Camera DEEP TOW](#)

[6K Sonar DEEP TOW](#)

[KM-ROV](#)

[POWER GRAB SAMPLER \(SHELL\)](#)

[POWER GRAB SAMPLER \(CLOW\)](#)

[BMS](#)

Go to a Cruise Information

Cruise ID:

Go to a Dive Information

Dive ID: