

MIRAI MR10-01 Leg1 Phytoplankton taxonomy

Last Modified: 2012-09-28

[ReadMe](#) [Observation Data](#)

Cruise ID: [MR10-01 Leg1](#)

Phytoplankton taxonomy: Processed (PI)

Data Policy: [JAMSTEC](#)

Observation Items:

Science Keywords:

Data Information

Taxonomy and cell number counting of phytoplankton

Cruise Report

http://www.godac.jamstec.go.jp/catalog/data/doc_catalog/media/MR10-01_leg1-2_all.pdf

For Using Data

Principal Investigator

Kazuhiko Matsumoto (JAMSTEC)

Use Constraints

Please contact PI (Kazuhiko Matsumoto, matsumotok@jamstec.go.jp)

Data Citation

Please contact PI (Kazuhiko Matsumoto, matsumotok@jamstec.go.jp)

Instrument

Instrument:

biological microscope

Instrument Information:



Sample

seawater sample

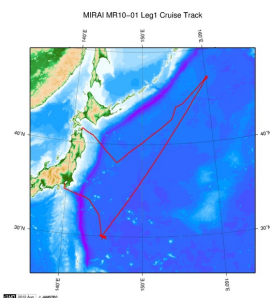
Sample ID

TAX

Data Format

Excell file

Related Information



[Enlarge Image](#)

MR10-01 Leg1

Ship Name: MIRAI

Period: 2010-01-19 - 2010-02-06

Chief Scientist: Kazuhiko Matsumoto (JAMSTEC)

Project Name: [Station K2, Station S1, Station KEO, Station KNOT]

Proposal ▶ Change in material cycles and ecosystem by the climate change and its feed back

Title:

Update History

2012-09-28 An observation data was registerd.

JAMSTEC

[Site Policy](#)
[Privacy Policy](#)
[Application for Data and Samples](#)
[Data Policy](#)
[What's New](#)
[Update History](#)
[Feeds](#)

Lists

[Publication List](#)
[Amount of Public Info.](#)

[Data](#)
[Map Search](#)
[Data Tree](#)
[Detailed Search](#)

Information of the Ships

[NATSUSHIMA](#)
[KAIYO](#)
[YOKOSUKA](#)
[MIRAI](#)
[KAIREI](#)
[CHIKYU](#)
[KAIMEI](#)
[SHINSEI MARU](#)
[HAKUHO MARU](#)

Information of the Submersibles

[KAIKO](#)
[SHINKAI 2000](#)
[SHINKAI 6500](#)
[DEEP TOW](#)
[HYPER-DOLPHIN](#)
[URASHIMA](#)
[YOKOSUKA DEEP TOW](#)
[6K Camera DEEP TOW](#)
[6K Sonar DEEP TOW](#)
[KM-ROV](#)
[POWER GRAB SAMPLER \(SHELL\)](#)
[POWER GRAB SAMPLER \(CLOW\)](#)

Go to a Cruise Information

Cruise ID:

Go to a Dive Information

Dive ID:



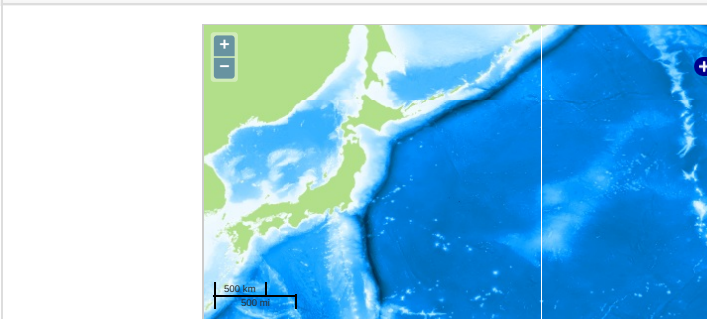
MIRAI MR10-01 Leg1 Phytoplankton taxonomy

Last Modified: 2012-09-28

[ReadMe](#) [Observation Data](#)

Cruise ID: [MR10-01 Leg1](#)
Phytoplankton taxonomy: Processed (PI)
Data Policy: [JAMSTEC](#)
Observation Items:
Science Keywords:

Observation Map



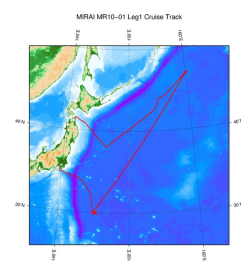
— ... Observation Line — ... Navigation ● ... Observation, Dive Point, Hole

Data List

File names

☐ MR10-01_tax.zip

Related Information



[Enlarge Image](#)

MR10-01 Leg1

Ship Name: MIRAI
Period: 2010-01-19 - 2010-02-06
Chief Scientist: Kazuhiko Matsumoto (JAMSTEC)
Project Name: [Station K2, Station S1, Station KEO, Station KNOT]
Proposal: ▶ Change in material cycles and ecosystem by the climate change and its feed back
Title:

Update History

2012-09-28 An observation data was registered.

JAMSTEC

[Site Policy](#)
[Privacy Policy](#)
[Application for Data and Samples](#)
[Data Policy](#)

[What's New](#)
[Update History](#)
[Feeds](#)

[Lists](#)
[Publication List](#)
[Amount of Public Info.](#)

[Data](#)
[Map Search](#)
[Data Tree](#)
[Detailed Search](#)

Information of the Ships

[NATSUSHIMA](#)
[KAIYO](#)
[YOKOSUKA](#)
[MIRAI](#)
[KAIREI](#)
[CHIKYU](#)
[KAIMEI](#)
[SHINSEI MARU](#)
[HAKUHO MARU](#)

Information of the Submersibles

[KAIKO](#)
[SHINKAI 2000](#)
[SHINKAI 6500](#)
[DEEP TOW](#)
[HYPER-DOLPHIN](#)
[URASHIMA](#)
[YOKOSUKA DEEP TOW](#)
[6K Camera DEEP TOW](#)
[6K Sonar DEEP TOW](#)
[KM-ROV](#)
[POWER GRAB SAMPLER \(SHELL\)](#)
[POWER GRAB SAMPLER \(CLOW\)](#)
[BMS](#)

Go to a Cruise Information

Cruise ID:

Go to a Dive Information

Dive ID: