

## MIRAI MR12-03 Partial Pressure of CO<sub>2</sub> (pCO<sub>2</sub>)

Last Modified: 2018-02-09

[ReadMe](#) [Observation Data](#) [Data Format](#)

Cruise ID: [MR12-03](#)

Partial Pressure of CO<sub>2</sub> (pCO<sub>2</sub>): Processed (DMO)-QCed

Data Policy: [JAMSTEC](#)

Observation Items: CO<sub>2</sub>, Air temperature, Atmospheric pressure, Wind direction, Wind speed, Sea surface temperature, Sea surface salinity

Science Keywords:

OCEANS > OCEAN CHEMISTRY > CARBON DIOXIDE

Cruise Report

[http://www.godac.jamstec.go.jp/catalog/data/doc\\_catalog/media/MR12-03\\_all.pdf](http://www.godac.jamstec.go.jp/catalog/data/doc_catalog/media/MR12-03_all.pdf)

### For Using Data

#### Principal Investigator

Shuji Kawakami (JAXA)

#### Use Constraints

See [Terms and Conditions](#) about constrain of use.

#### Data Citation

See [Terms and Conditions](#) about data citation.

### Instrument

Instrument:

pCO<sub>2</sub> measurement system (MR10-07

- )



### Information on pCO<sub>2</sub> measurement

Instrument : pCO<sub>2</sub> measuring system ; Nippon ANS Ltd.

Method : Non-dispersive infrared gas analyzer (NDIR)

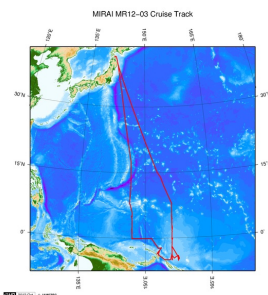
Equilibrator : showerhead-type

Precision : -

Reference Gas : Taiyo Nippon Sanso Corporation

[About data processing method](#)

### Related Information



 [Enlarge Image](#)

#### MR12-03

Ship Name: MIRAI

Period: 2012-07-16 - 2012-08-29

Chief Scientist: Yuji Kashino (JAMSTEC)

Project Name: [Tropical Ocean Climate Study (TOCS)]

### Update History

2018-02-09	An observation data was registerd.
2017-07-27	An observation data was registerd.
2014-08-30	An observation data was registerd.

#### JAMSTEC

[Site Policy](#)  
[Privacy Policy](#)  
[Application for Data and Samples](#)  
[Data Policy](#)

[What's New](#)  
[Update History](#)  
[Feeds](#)

#### Lists

[Publication List](#)  
[Amount of Public Info.](#)

#### Data

[Map Search](#)  
[Data Tree](#)  
[Detailed Search](#)

#### Information of the Ships

[NATSUSHIMA](#)  
[KAIYO](#)  
[YOKOSUKA](#)  
[MIRAI](#)  
[KAIREI](#)  
[CHIKYU](#)  
[KAIMEI](#)  
[SHINSEI MARU](#)  
[HAKUHO MARU](#)

#### Information of the Submersibles

[KAICO](#)  
[SHINKAI 2000](#)  
[SHINKAI 6500](#)  
[DEEP TOW](#)  
[HYPER-DOLPHIN](#)  
[URASHIMA](#)  
[YOKOSUKA DEEP TOW](#)  
[6K Camera DEEP TOW](#)  
[6K Sonar DEEP TOW](#)  
[KM-ROV](#)  
[POWER GRAB SAMPLER \(SHELL\)](#)  
[POWER GRAB SAMPLER \(CLOW\)](#)  
[BMS](#)

#### Go to a Cruise Information

Cruise ID:

#### Go to a Dive Information

Dive ID:



## MIRAI MR12-03 Partial Pressure of CO2 (pCO2)

Last Modified: 2018-02-09

[ReadMe](#) [Observation Data](#) [Data Format](#)

Cruise ID: [MR12-03](#)

Partial Pressure of CO2 (pCO2): Processed (DMO)-QCed

Data Policy: [JAMSTEC](#)

### pCO2 FORMAT\_M

#### Data Format

The file is in variable length, comma separated text file (csv) format.

The line starts with "#" is a comment line which contains version information and so on.

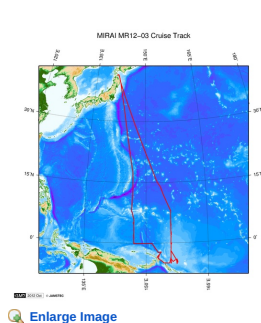
Column NO.	Column Heading	Comments
1	Ship	Ship name
2	Cruise	Cruise ID
3	Serial No.	Serial No.
4	Date	year (YYYY) in UTC
5		month (MM) in UTC
6		day (DD) in UTC
7	Time	hour (hh) in UTC
8		minute (mm) in UTC
9	Latitude	Latitude (degree) ; Positive in north
10	Longitude	Longitude (degree) ; degree in eastward (0 - 360)
11	xCO2_Air	CO <sub>2</sub> mixing ratio (ppm) in the air
12	F	Quality flag for xCO2_Air
13	xCO2_Sea	CO <sub>2</sub> mixing ratio (ppm) in the sea surface water (*)
14	F	Quality flag for xCO2_Sea
15	Wind_Dir	Wind direction (degree) ; Positive in clockwise from the north
16	Wind_Spd	Wind speed (m/s)
17	Atm_Prs	Barometric pressure (hPa)
18	Atm_Tmp.	Air temperature (degree-C)
19	SST	Sea surface temperature (degree-C)
20	F	Quality flag for SST
21	SSS	Sea surface salinity (PSU)
22	F	Quality flag for SSS
23	pH2O	Vapor pressure of in-situ sea water (hPa)

#### Definition of Quality Control Flags

- 2 - Good
- 3 - Questionable
- 4 - Bad
- 5 - Not reported
- 9 - No data

\*: Please refer to "Information on pCO2 data" shown in ReadMe tab for xCO2\_Sea data calculation.

### Related Information



#### MR12-03

Ship Name: MIRAI  
Period: 2012-07-16 - 2012-08-29  
Chief Scientist: Yuji Kashino (JAMSTEC)  
Project Name: [Tropical Ocean Climate Study (TOCS)]

### Update History

2018-02-09	An observation data was registered.
2017-07-27	An observation data was registered.
2014-08-30	An observation data was registered.

**JAMSTEC**  
[Site Policy](#)  
[Privacy Policy](#)  
[Application for Data and Samples](#)  
[Data Policy](#)  
[What's New](#)  
[Update History](#)  
[Feeds](#)

**Lists**  
[Publication List](#)  
[Amount of Public Info.](#)  
**Data**  
[Map Search](#)  
[Data Tree](#)  
[Detailed Search](#)

**Information of the Ships**  
[NATSUSHIMA](#)  
[KAIYO](#)  
[YOKOSUKA](#)  
[MIRAI](#)  
[KAIREI](#)  
[CHIKYU](#)  
[KAIMEI](#)  
[SHINSEI MARU](#)  
[HAKUHO MARU](#)

**Information of the Submersibles**  
[KAIKO](#)  
[SHINKAI 2000](#)  
[SHINKAI 6500](#)  
[DEEP TOW](#)  
[HYPER-DOLPHIN](#)  
[URASHIMA](#)  
[YOKOSUKA DEEP TOW](#)  
[6K Camera DEEP TOW](#)  
[6K Sonar DEEP TOW](#)  
[KM-ROV](#)  
[POWER GRAB](#)  
[SAMPLER \(SHELL\)](#)  
[POWER GRAB](#)  
[SAMPLER \(CLOW\)](#)  
[BMS](#)

#### Go to a Cruise Information

Cruise ID:

#### Go to a Dive Information

Dive ID:



## MIRAI MR12-03 Partial Pressure of CO<sub>2</sub> (pCO<sub>2</sub>)

Last Modified: 2018-02-09

[ReadMe](#) [Observation Data](#) [Data Format](#)

Cruise ID: [MR12-03](#)

Partial Pressure of CO<sub>2</sub> (pCO<sub>2</sub>): Processed (DMO)-QCed

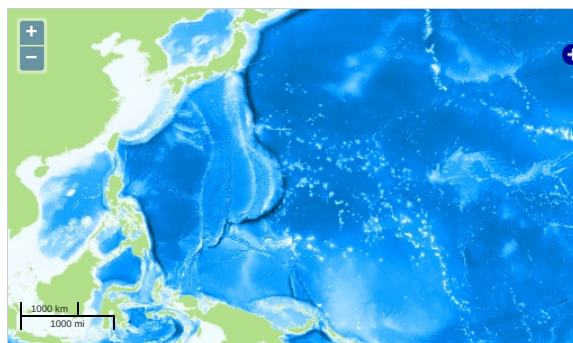
Data Policy: [JAMSTEC](#)

Observation Items: CO<sub>2</sub>, Air temperature, Atmospheric pressure, Wind direction, Wind speed, Sea surface temperature, Sea surface salinity

Science Keywords:

OCEANS > OCEAN CHEMISTRY > CARBON DIOXIDE

### Observation Map



... Observation Line    ... Navigation    ... Observation, Dive Point, Hole

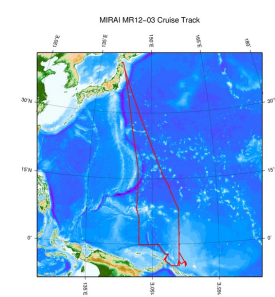
Imagery reproduced from ...

### Data List

File names

☐ MR12-03\_xCO2.csv

### Related Information



[Enlarge Image](#)

#### MR12-03

Ship Name: MIRAI

Period: 2012-07-16 - 2012-08-29

Chief Scientist: Yuji Kashino (JAMSTEC)

Project Name: [Tropical Ocean Climate Study (TOCS)]

### Update History

2018-02-09	An observation data was registered.
2017-07-27	An observation data was registered.
2014-08-30	An observation data was registered.

JAMSTEC  
[Site Policy](#)  
[Privacy Policy](#)  
[Application for Data and Samples](#)  
[Data Policy](#)  
  
[What's New](#)  
[Update History](#)  
[Feeds](#)

**Lists**  
[Publication List](#)  
[Amount of Public Info.](#)  
  
**Data**  
[Map Search](#)  
[Data Tree](#)  
[Detailed Search](#)

**Information of the Ships**  
[NATSUSHIMA](#)  
[KAIYO](#)  
[YOKOSUKA](#)  
[MIRAI](#)  
[KAIREI](#)  
[CHIKYU](#)  
[KAIMEI](#)  
[SHINSEI MARU](#)  
[HAKUHO MARU](#)

**Information of the Submersibles**  
[KAICO](#)  
[SHINKAI 2000](#)  
[SHINKAI 6500](#)  
[DEEP TOW](#)  
[HYPER-DOLPHIN](#)  
[URASHIMA](#)  
[YOKOSUKA DEEP TOW](#)  
[6K Camera DEEP TOW](#)  
[6K Sonar DEEP TOW](#)  
[KM-ROV](#)  
[POWER GRAB SAMPLER \(SHELL\)](#)  
[POWER GRAB SAMPLER \(CLOW\)](#)  
[BMS](#)

#### Go to a Cruise Information

Cruise ID:

#### Go to a Dive Information

Dive ID: