

## MIRAI MR11-03 Fast repetition rate fluorometer data

Last Modified: 2013-05-31

[ReadMe](#) [Observation Data](#)

Cruise ID: [MR11-03](#)

Fast repetition rate fluorometer data: Processed (PI)

Data Policy: [JAMSTEC](#)

Observation Items:

Science Keywords:

### Data Information

Photosynthetic activity measured by fast repetition rate fluorometry

### Cruise Report

[http://www.godac.jamstec.go.jp/catalog/data/doc\\_catalog/media/MR11-03\\_all.pdf](http://www.godac.jamstec.go.jp/catalog/data/doc_catalog/media/MR11-03_all.pdf)

### For Using Data

#### Principal Investigator

Tetsuichi Fujiki (JAMSTEC)

#### Use Constraints

Please contact PI (Makio C. Honda, [hondam@jamstec.go.jp](mailto:hondam@jamstec.go.jp))

#### Data Citation

Please contact PI (Makio C. Honda, [hondam@jamstec.go.jp](mailto:hondam@jamstec.go.jp))

### Instrument

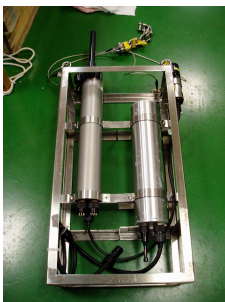
Instrument:

Fast repetition rate fluorometer

Instrument Information:

Diving Flash, Kimoto Electric, for details of the instrument see Fujiki et al. (2008)

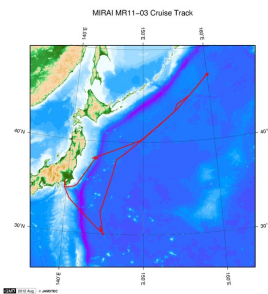
Fujiki T, Hosaka T, Kimoto H, Ishimaru T, Saino T (2008) In situ observation of phytoplankton productivity by an underwater profiling buoy system: use of fast repetition rate fluorometry. Mar Ecol Prog Ser 353:81–88



### Data Format

Excel file

### Related Information



[Enlarge Image](#)

#### MR11-03

Ship Name: MIRAI

Period: 2011-04-14 - 2011-05-05

Chief Scientist: Makio Honda (JAMSTEC)

Project Name: [Station K2, Station S1, Station KEO, Station KNOT]

Proposal Title: Studies on the microbial-geochemical processes that regulate the operation of the biological pump in the subarctic and subtropical regions of the western North Pacific

### Update History

2013-05-31 An observation data was registered.

[Data Policy](#)

[Data Tree](#)

[KAIREI](#)

[DEEP TOW](#)

[Go to a Dive Information](#)

[What's New](#)

[Detailed Search](#)

[CHIKYU](#)

[HYPER-DOLPHIN](#)

Dive ID:

[Update History](#)

[KAIMEI](#)

[URASHIMA](#)

[Feeds](#)

[SHINSEI MARU](#)

[YOKOSUKA DEEP TOW](#)

[6K Camera DEEP TOW](#)

[6K Sonar DEEP TOW](#)

[KM-ROV](#)

[POWER GRAB SAMPLER](#)

[\(SHELL\)](#)

[POWER GRAB SAMPLER](#)

[\(CLOW\)](#)

[BMS](#)

Copyright 2011 Japan Agency for Marine-Earth Science and Technology



**JAMSTEC**  
JAPAN AGENCY FOR MARINE EARTH SCIENCE AND TECHNOLOGY

国立研究開発法人  
海洋研究開発機構

## MIRAI MR11-03 Fast repetition rate fluorometer data

Last Modified: 2013-05-31

[ReadMe](#) [Observation Data](#)

Cruise ID: [MR11-03](#)

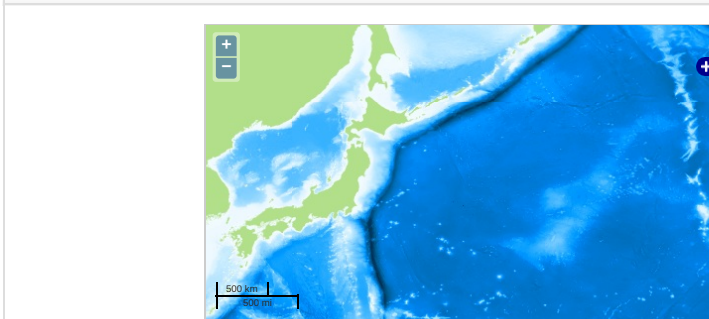
Fast repetition rate fluorometer data Processed (PI)

Data Policy: [JAMSTEC](#)

Observation Items:

Science Keywords:

### Observation Map



... Observation Line ... Navigation ... Observation, Dive Point, Hole

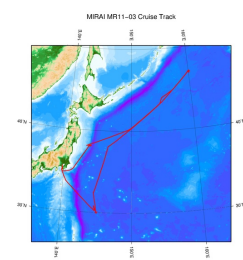
### Data List

[Add to Basket](#)

#### File names

☐ FRRF\_MR11-03\_K2\_04210216.xls  
☐ FRRF\_MR11-03\_K2\_04210725.xls  
☐ FRRF\_MR11-03\_K2\_04211048.xls  
☐ FRRF\_MR11-03\_K2\_04211755.xls  
☐ FRRF\_MR11-03\_K2\_04230422.xls  
☐ FRRF\_MR11-03\_K2\_04230721.xls  
☐ FRRF\_MR11-03\_K2\_04231048.xls  
☐ FRRF\_MR11-03\_K2\_04231653.xls  
☐ FRRF\_MR11-03\_S1\_04290410.xls  
☐ FRRF\_MR11-03\_S1\_04290754.xls  
☐ FRRF\_MR11-03\_S1\_04291049.xls  
☐ FRRF\_MR11-03\_S1\_04291802.xls  
☐ FRRF\_MR11-03\_S1\_05010419.xls  
☐ FRRF\_MR11-03\_S1\_05010723.xls  
☐ FRRF\_MR11-03\_S1\_05011050.xls  
☐ FRRF\_MR11-03\_S1\_05011609.xls

### Related Information



[Enlarge Image](#)

#### MR11-03

Ship Name: MIRAI

Period: 2011-04-14 - 2011-05-05

Chief Scientist: Makio Honda (JAMSTEC)

Project Name: [Station K2, Station S1, Station KEO, Station KNOT]

Proposal ▶ Studies on the microbial-geochemical processes that regulate the operation of the biological pump in the subarctic and subtropical regions of the western North Pacific

Title:

### Update History

2013-05-31 An observation data was registered.

#### JAMSTEC

[Site Policy](#)

[Privacy Policy](#)

[Application for Data and Samples](#)

[Data Policy](#)

[What's New](#)

[Update History](#)

[Feeds](#)

#### Lists

[Publication List](#)

[Amount of Public Info.](#)

#### Data

[Map Search](#)

[Data Tree](#)

[Detailed Search](#)

#### Information of the Ships

[NATSUSHIMA](#)

[KAIYO](#)

[YOKOSUKA](#)

[MIRAI](#)

[KAIREI](#)

[CHIKYU](#)

[KAIMEI](#)

[SHINSEI MARU](#)

[HAKUHO MARU](#)

#### Information of the Submersibles

[KAIKO](#)

[SHINKAI 2000](#)

[SHINKAI 6500](#)

[DEEP TOW](#)

[HYPER-DOLPHIN](#)

[URASHIMA](#)

[YOKOSUKA DEEP TOW](#)

[6K Camera DEEP TOW](#)

[6K Sonar DEEP TOW](#)

[KM-ROV](#)

[POWER GRAB SAMPLER \(SHELL\)](#)

[POWER GRAB SAMPLER \(CLOW\)](#)

[BMS](#)

#### Go to a Cruise Information

Cruise ID:

#### Go to a Dive Information

Dive ID:

