

## KAIREI KR08-10 Heat flow measurement data

Last Modified: 2012-10-26

[ReadMe](#) [Observation Data](#)

Cruise ID: [KR08-10](#)

Heat flow measurement data: Processed (PI)

Data Policy: [JAMSTEC](#)

Observation Items:

Science Keywords:

### Data Information

Time-series of temperature of sensors attached along a probe and tili angle of the probe(two-axis).

Measurement interval is 30 sec (10 sec at #430SF).

Sensor intervals are listed at the top of the data file.

Coordinates of the stations and probe penetration time are compiled in a table.

Related Dive No. : KAIKO 430

### Cruise Report

[http://www.godac.jamstec.go.jp/catalog/data/doc\\_catalog/media/KR08-10\\_all.pdf](http://www.godac.jamstec.go.jp/catalog/data/doc_catalog/media/KR08-10_all.pdf)

### For Using Data

#### Principal Investigator

Makoto Yamano (Earthquake Research Institute, University of Tokyo)

#### Use Constraints

None

#### Data Citation

None

### Instrument

Instrument:

Stand-Alone Heat Flow meter (SAHF)

Instrument Information:



Instrument:

Heat flow piston coring system

Instrument Information:



Instrument:

Deep-sea heat flow probe

Instrument Information:

Description of the instruments is given in the cruise report.



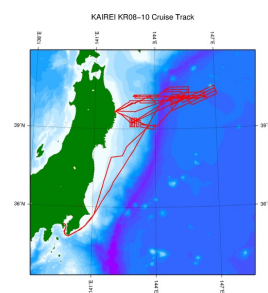
### Data Format

Microsoft Excel file (.xls)

temperature in deg C, tilt angle in degree

### Related Information

☒ Cruise Data ☐ Dive Data



[Enlarge Image](#)

#### KR08-10

Ship Name: KAIKEI

Period: 2008-08-18 - 2008-09-10

Chief Scientist: Makoto Yamano (The University of Tokyo)/Tadanori Goto (JAMSTEC)

Proposal Studies on the thermal structure and the water distribution in the upper part of the Pacific

Title: plate subducting along the Japan Trench

### Update History

2012-10-26 An observation data was registerd.

#### JAMSTEC

[Site Policy](#)

[Privacy Policy](#)

[Application for Data and Samples](#)

[Data Policy](#)

[What's New](#)

[Update History](#)

[Feeds](#)

#### Lists

[Publication List](#)

[Amount of Public Info.](#)

#### Data

[Map Search](#)

[Data Tree](#)

[Detailed Search](#)

#### Information of the Ships

[NATSUSHIMA](#)

[KAIYO](#)

[YOKOSUKA](#)

[MIRAI](#)

[KAIREI](#)

[CHIKYU](#)

[KAIMEI](#)

[SHINSEI MARU](#)

[HAKUHO MARU](#)

#### Information of the Submersibles

[KAIKO](#)

[SHINKAI 2000](#)

[SHINKAI 6500](#)

[DEEP TOW](#)

[HYPER-DOLPHIN](#)

[URASHIMA](#)

[YOKOSUKA DEEP TOW](#)

[6K Camera DEEP TOW](#)

[6K Sonar DEEP TOW](#)

[KM-ROV](#)

#### Go to a Cruise Information

Cruise ID:

#### Go to a Dive Information

Dive ID:

POWER GRAB SAMPLER  
(SHELL)  
POWER GRAB SAMPLER  
(CLOW)  
BMS

Copyright 2011 Japan Agency for Marine-Earth Science and  
Technology



**JAMSTEC** 国立研究開発法人  
海洋研究開発機構  
JAPAN AGENCY FOR MARINE-EARTH SCIENCE AND TECHNOLOGY

## KAIREI KR08-10 Heat flow measurement data

Last Modified: 2012-10-26

[ReadMe](#) [Observation Data](#)

Cruise ID: **KR08-10**

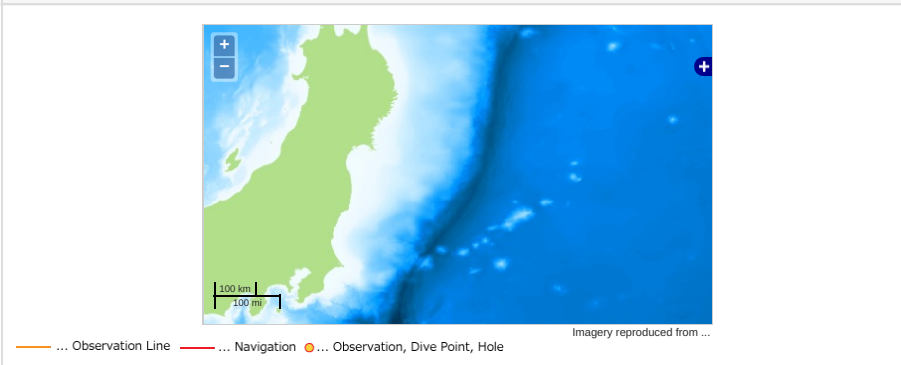
Heat flow measurement data: Processed (PI)

Data Policy: [JAMSTEC](#)

Observation Items:

Science Keywords:

### Observation Map



### Data List

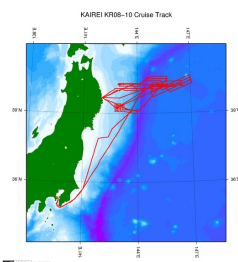
#### File names

☐ KR08-10\_hf.zip

### Related Information

☒ Cruise Data

☐ Dive Data



#### KR08-10

Ship Name: KAIKEI

Period: 2008-08-18 - 2008-09-10

Chief Scientist: Makoto Yamano (The University of Tokyo)/Tadanori Goto (JAMSTEC)

Proposal: Studies on the thermal structure and the water distribution in the upper part of the Pacific

Title: plate subducting along the Japan Trench

### Update History

2012-10-26

An observation data was registered.

#### JAMSTEC

[Site Policy](#)  
[Privacy Policy](#)  
[Application for Data and Samples](#)  
[Data Policy](#)  
[What's New](#)  
[Update History](#)  
[Feeds](#)

#### Lists

[Publication List](#)  
[Amount of Public Info.](#)  
[Data](#)  
[Map Search](#)  
[Data Tree](#)  
[Detailed Search](#)

#### Information of the Ships

[NATSUSHIMA](#)  
[KAIYO](#)  
[YOKOSUKA](#)  
[MIRAI](#)  
[KAIKEI](#)  
[CHIKYU](#)  
[KAIMEI](#)  
[SHINSEI MARU](#)  
[HAKUHO MARU](#)

#### Information of the Submersibles

[KAICO](#)  
[SHINKAI 2000](#)  
[SHINKAI 6500](#)  
[DEEP TOW](#)  
[HYPER-DOLPHIN](#)  
[URASHIMA](#)  
[YOKOSUKA DEEP TOW](#)  
[6K Camera DEEP TOW](#)  
[6K Sonar DEEP TOW](#)  
[KM-ROV](#)  
[POWER GRAB SAMPLER \(SHELL\)](#)  
[POWER GRAB SAMPLER \(CLOW\)](#)  
[BMS](#)

#### Go to a Cruise Information

Cruise ID:

#### Go to a Dive Information

Dive ID: