

MIRAI MR10-01 Leg1 Cell concentrations of pico- and nanophytoplankton and Algal pigments

Last Modified: 2012-09-28

[ReadMe](#) [Observation Data](#)

Cruise ID: [MR10-01 Leg1](#)

Cell concentrations of pico- and nanophytoplankton and Algal pigments : Processed (PI)

Data Policy: [JAMSTEC](#)

Observation Items:

Science Keywords:

Data Information

Cell concentrations of Synechococcus, cryptophytes and other picoeukaryotes as analyzed by flow cytometry Concentrations of major algal pigments as analyzed by HPLC

Cruise Report

http://www.godac.jamstec.go.jp/catalog/data/doc_catalog/media/MR10-01_leg1-2_all.pdf

For Using Data

Principal Investigator

Mitsuhide Sato (Graduate School of Agricultural and Life Sciences)

Use Constraints

None

Data Citation

None

Instrument

Instrument:

HPLC

Instrument Information:

LC-10AD and a photodetector SPD-M10AV (Shimadzu)

Instrument:

Flow cytometer

Instrument Information:

PAS-III (partec)

NO IMAGE

NO IMAGE

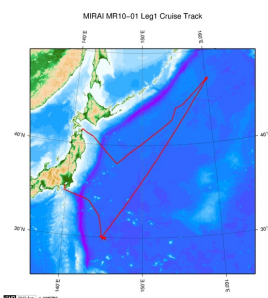
Sample

Seawater

Data Format

xlsx file

Related Information



[Enlarge Image](#)

MR10-01 Leg1

Ship Name: MIRAI

Period: 2010-01-19 - 2010-02-06

Chief Scientist: Kazuhiko Matsumoto (JAMSTEC)

Project Name: [Station K2, Station S1, Station KEO, Station KNOT]

Proposal ▶ Change in material cycles and ecosystem by the climate change and its feed back

Title:

Update History

2012-09-28 An observation data was registered.

JAMSTEC

[Site Policy](#)

[Privacy Policy](#)

[Application for Data and Samples](#)

[Data Policy](#)

What's New

[Update History](#)

[Feeds](#)

Lists

[Publication List](#)

[Amount of Public Info.](#)

Data

[Map Search](#)

[Data Tree](#)

[Detailed Search](#)

Information of the Ships

[NATSUSHIMA](#)

[KAIYO](#)

[YOKOSUKA](#)

[MIRAI](#)

[KAIREI](#)

[CHIKYU](#)

[KAIMEI](#)

[SHINSEI MARU](#)

[HAKUHO MARU](#)

Information of the Submersibles

[KAIKO](#)

[SHINKAI 2000](#)

[SHINKAI 6500](#)

[DEEP TOW](#)

[HYPER-DOLPHIN](#)

[URASHIMA](#)

[YOKOSUKA DEEP TOW](#)

[6K Camera DEEP TOW](#)

[6K Sonar DEEP TOW](#)

[KM-ROV](#)

[POWER GRAB SAMPLER \(SHELL\)](#)

[POWER GRAB SAMPLER](#)

Go to a Cruise Information

Cruise ID:

Go to a Dive Information

Dive ID:



MIRAI MR10-01 Leg1 Cell concentrations of pico- and nanophytoplankton and Algal pigments

Last Modified: 2012-09-28

[ReadMe](#) [Observation Data](#)

Cruise ID: [MR10-01 Leg1](#)

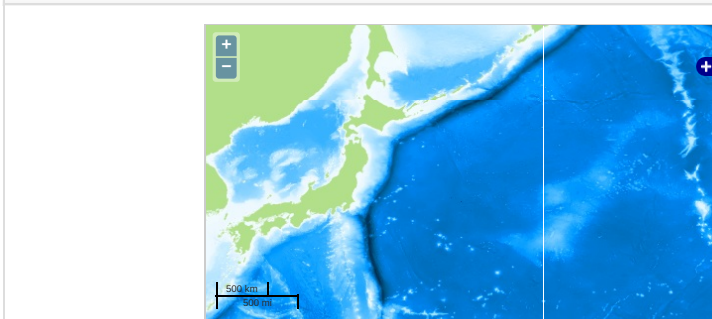
Cell concentrations of pico- and nanophytoplankton and Algal pigments Processed (PI)

Data Policy: [JAMSTEC](#)

Observation Items:

Science Keywords:

Observation Map



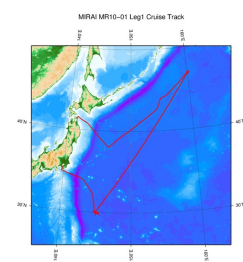
... Observation Line ... Navigation ... Observation, Dive Point, Hole

Data List

File names

☐ MR10-01_plankton.zip

Related Information



[Enlarge Image](#)

MR10-01 Leg1

Ship Name: MIRAI

Period: 2010-01-19 - 2010-02-06

Chief Scientist: Kazuhiko Matsumoto (JAMSTEC)

Project Name: [Station K2, Station S1, Station KEO, Station KNOT]

Proposal: Change in material cycles and ecosystem by the climate change and its feed back

Title:

Update History

2012-09-28 An observation data was registered.

JAMSTEC

[Site Policy](#)

[Privacy Policy](#)

[Application for Data and Samples](#)

[Data Policy](#)

[What's New](#)

[Update History](#)

[Feeds](#)

Lists

[Publication List](#)

[Amount of Public Info.](#)

[Data](#)

[Map Search](#)

[Data Tree](#)

[Detailed Search](#)

Information of the Ships

[NATSUSHIMA](#)

[KAIYO](#)

[YOKOSUKA](#)

[MIRAI](#)

[KAIREI](#)

[CHIKYU](#)

[KAIMEI](#)

[SHINSEI MARU](#)

[HAKUHO MARU](#)

Information of the Submersibles

[KAIKO](#)

[SHINKAI 2000](#)

[SHINKAI 6500](#)

[DEEP TOW](#)

[HYPER-DOLPHIN](#)

[URASHIMA](#)

[YOKOSUKA DEEP TOW](#)

[6K Camera DEEP TOW](#)

[6K Sonar DEEP TOW](#)

[KM-ROV](#)

[POWER GRAB SAMPLER \(SHELL\)](#)

[POWER GRAB SAMPLER \(CLOW\)](#)

[BMS](#)

Go to a Cruise Information

Cruise ID:

Go to a Dive Information

Dive ID: