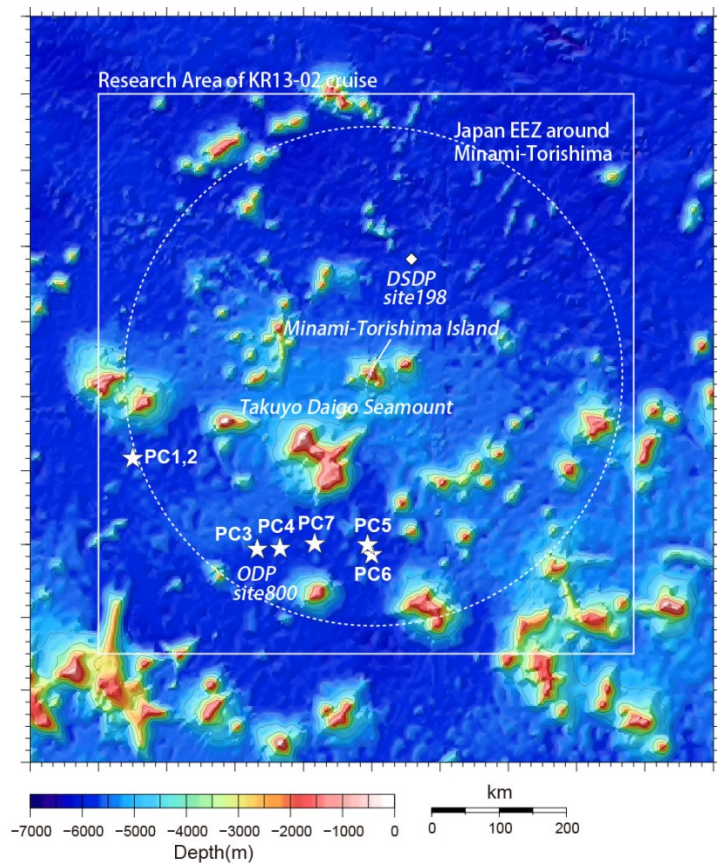
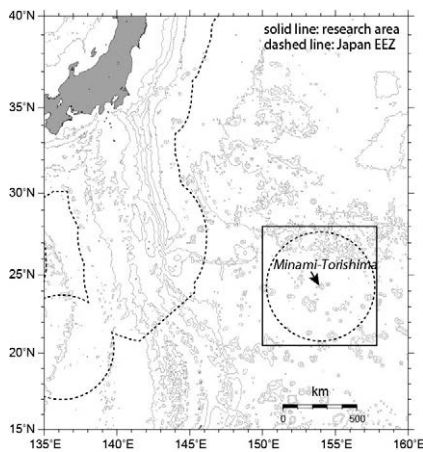


Cruise Summary

1. Cruise Information

- Cruise ID: KR13-02
- Name of vessel R/V Kairei
- Title of the cruise: Survey of REY-rich mud around Minami-Torishima Island.
- Chief Scientist, Representative of the science party: IJIMA, Koichi [JAMSTEC]
- Cruise period: Jan. 21 to Jan. 31, 2013
- Ports of call: Yokosuka (JAMSTEC) to Yokosuka (JAMSTEC)
- Research area: Off Minami-Torishima Island (Marcus Island)



2. Overview of the Observation

- Objective

In this cruise, our objective was to confirm the presence of REY-rich mud around Minami-Torishima island, especially around Ocean Drilling Program (ODP) Leg

129 site 800, where REY-rich mud was confirmed in the drilled core at 10m beneath the sea floor (Kato et al., 2012). Concretely, (1) To collect sediment core samples, we use 20m long piston corer system. (2) To confirm sub-seafloor sedimentary sequences such as chert layer and for determination of coring site, we use sub-bottom profiler throughout the cruise in the research area. Additionally, publicly-offered TV media crew is onboard.

● Preliminary Result

We obtained 7 sediment cores at 6 sites. The detail is confidential matter.