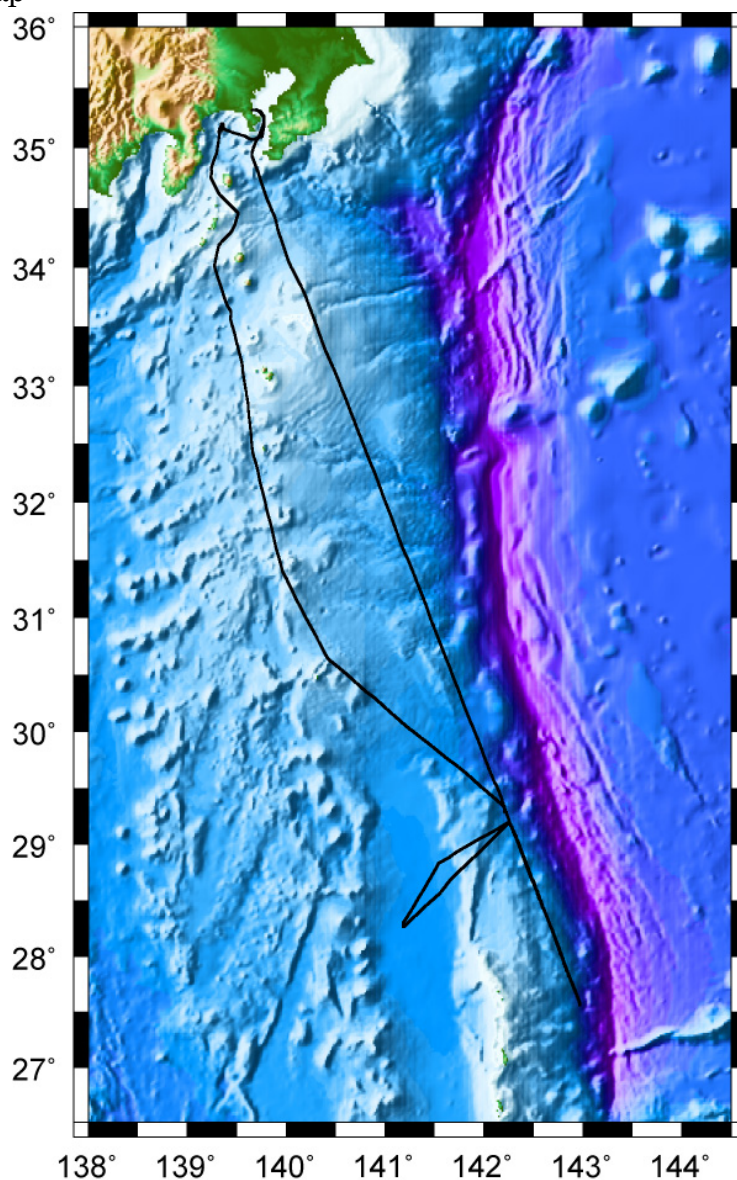


Cruise summary

1. Cruise Information :

- (1) Cruise number, Ship name: KY11-E02, R/V Kaiyo
- (2) Title of the cruise: 2010FY “Seismic study in the Izu-Ogasawara region”
- (3) Chief Scientist [Affiliation]: Takeshi SATO [JAMSTEC]
- (4) Representative of Science Party [Affiliation]: Yoshiyuki TATSUMI [JAMSTEC]
- (5) Title of proposal:
Crustal growth of the Izu-Ogasawara oceanic island arc –Seismic study for IODP Project IBM-
- (6) Cruise period, Port call:
2011/03/28-04/05, JAMSTEC (Yokosuka) to JAMSTEC (Yokosuka)
- (7) Research Area: Izu-Ogasawara region
- (8) Research Map:



2. Overview of Observation :

(1) Objectives :

In the Izu-Ogasawara area, IFREE has conducted seismic surveys intensively to understand crustal evolution of oceanic arcs since 2004. The objectives of this cruise in this area are to reveal the distribution of the detail crustal structure in the fore-arc area and in planed drill points of the “Project IBM” being one of an IODP proposal. In this cruise, OBSs were recovered because the recovery of OBSs by KR11-05 cruise was interrupted by the 2011 Off the Pacific Coast of Tohoku Earthquake in Japan.

(2) List of observation instruments :

1) Recovery of ocean bottom seismometers (OBSs)

43 OBSs (KT06_1-43) deployed off north-northeast of Chichi-jima by KR11-05 Leg1 cruise were recovered.

2) Bathymetry observation

During this cruise, bathymetry data have been recorded continuously by SEABEAM2112.

3) Temperature observation for the correction of sonic speed

Expendable-Bathy Thermograph (XBT) was conducted to correct the sonic speed for the bathymetry survey.