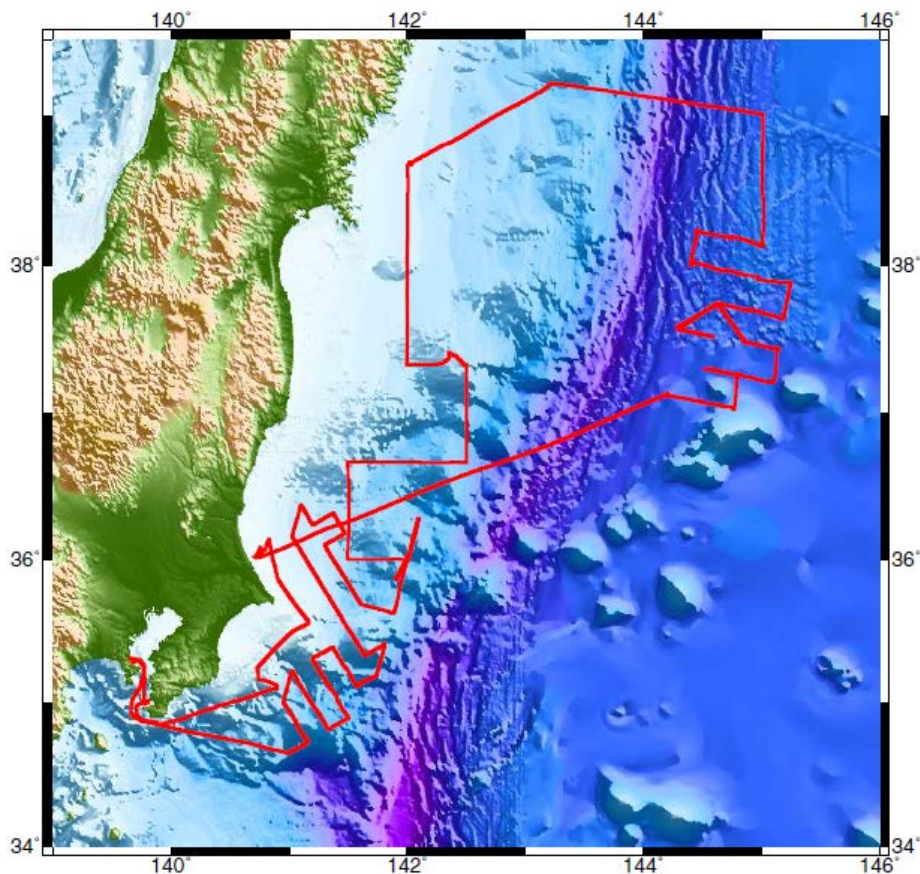


Cruise summary

1. Cruise Information :

- (1) Cruise number, Ship name: YK11-E05, R/V Yokosuka
- (2) Title of the cruise: 2011FY “Sea Area Monitoring off Miyagi, Fukushima, and Ibaragi region”
- (3) Chief Scientist [Affiliation]: Tsutomu Takahashi [JAMSTEC]
- (4) Representative of Science Party [Affiliation]: Masanao Shinohara [Tokyo Univ.]
- (5) Title of proposal:
Seismic study in the source region of the 2011 Off the Pacific Coast of Tohoku Earthquake
- (6) Cruise period, Port call:
2011/06/26-07/06, JAMSTEC (Yokosuka) to Yokosuka-Shinko
- (7) Research Area: Off the eastern Japan
- (8) Research Map:



2. Overview of Observation :

(1) Objectives :

The objectives of this cruise are to study seismic activity including low frequency events in the northeastern Japan subduction zone and aftershocks associated with the 2011 Off the Pacific Coast of Tohoku Earthquake in Japan.

(2) List of observation instruments :

1) Recovery of ocean bottom seismometers (OBSs)

20 OBSs deployed by KR11-E03 cruise were recovered.

1 OBS deployed off Boso Peninsula was recovered.

2) Deployment of OBSs

33 OBSs were deployed.

3) Bathymetry observation

During this cruise, bathymetry data have been recorded continuously by SEABEAM.

4) Temperature observation for the correction of sonic speed

Expendable-Bathy Thermograph (XBT) was conducted to correct the sonic speed for the bathymetry survey.