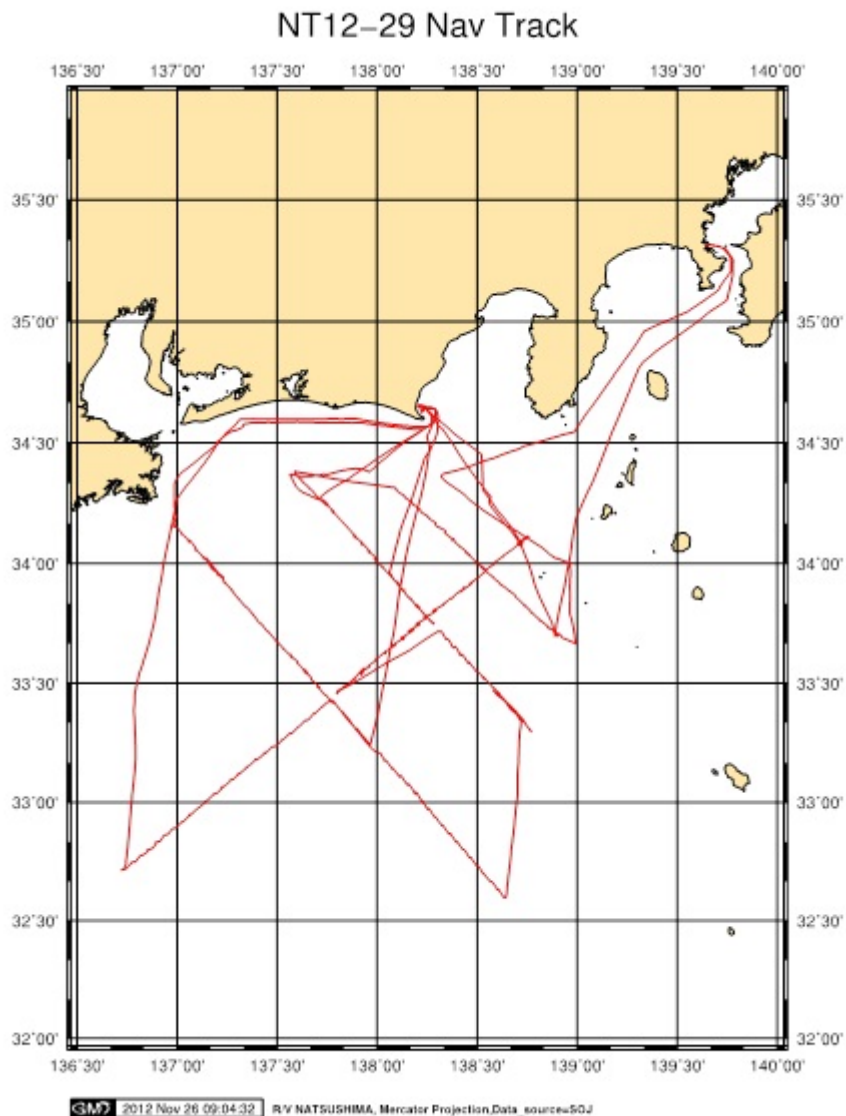


Cruise Summary

1. Cruise Information :

- (1) Cruise number, Ship name: NT12-29, R/V Natsushima
- (2) Title of the cruise: 2012FY “Seismic study and earthquake observation in the area between the off Kii peninsula and off Tokai”
- (3) Title of proposal: Seismic study and observation of evaluation for large earthquake synchronization in the Nankai Trough
- (4) Cruise period, Port call:
2012/11/09-11/19, JAMSTEC (Yokosuka) to JAMSTEC (Yokosuka)
- (5) Research Area: between off Kii Peninsula and off Tokai
- (6) Research Map:



2. Researchers

(1) Chief Scientist [Affiliation]: Yuka KAIHO [JAMSTEC]

(2) Representative of Science Party [Affiliation]:

Yoshiyuki KANEDA [JAMSTEC]

(3) Science party list:

Shuichi KODAIRA [JAMSTEC]

Narumi TAKAHASHI [JAMSTEC]

Koichiro OBANA [JAMSTEC]

Ayako NAKANISHI [JAMSTEC]

Tsutomu TAKAHASHI [JAMSTEC]

Yuka KAIHO [JAMSTEC]

Yojiro YAMAMOTO [JAMSTEC]

Seiichi MIURA [JAMSTEC]

Gou FUJIE [JAMSTEC]

Takeshi SATO [JAMSTEC]

Mikiya YAMASHITA [JAMSTEC]

Tetuo NO [JAMSTEC]

Kazuhiko KASHIWASE [JAMSTEC]

3. Overview of Observation :

(1) Objectives :

The objectives of this cruise are to reveal the crustal structure and earthquake observation in the area between off Kii Peninsula and off Tokai as a part of the study of “Research program concerning interaction between the Tokai, Tonankai, and Nankai Earthquakes” funded by the Ministry of Education, Culture, Sports, Science, and Technology of Japan.

In the Nankai trough subduction zone which have a number of major earthquakes in the last ca. 1300 years, historical seismicity reveals that the segmented pattern which were coupled occasionally. The areas between Off Kii and off Tokai cover the part of two segments, Tonankai and Tokai rupture area. To understand the structure factors controlling the segmentation and coupling, it is necessary to reveal the detailed structure variations and seismic activities in this subduction zone. The objectives of this cruise are to reveal seismic structure and seismic activity in the area between off Kii and off Tokai.

(2) List of observations :

1) Retrieve of ocean bottom seismometers (OBSs)

145 OBSs (deployed in KR12-12) were recovered.

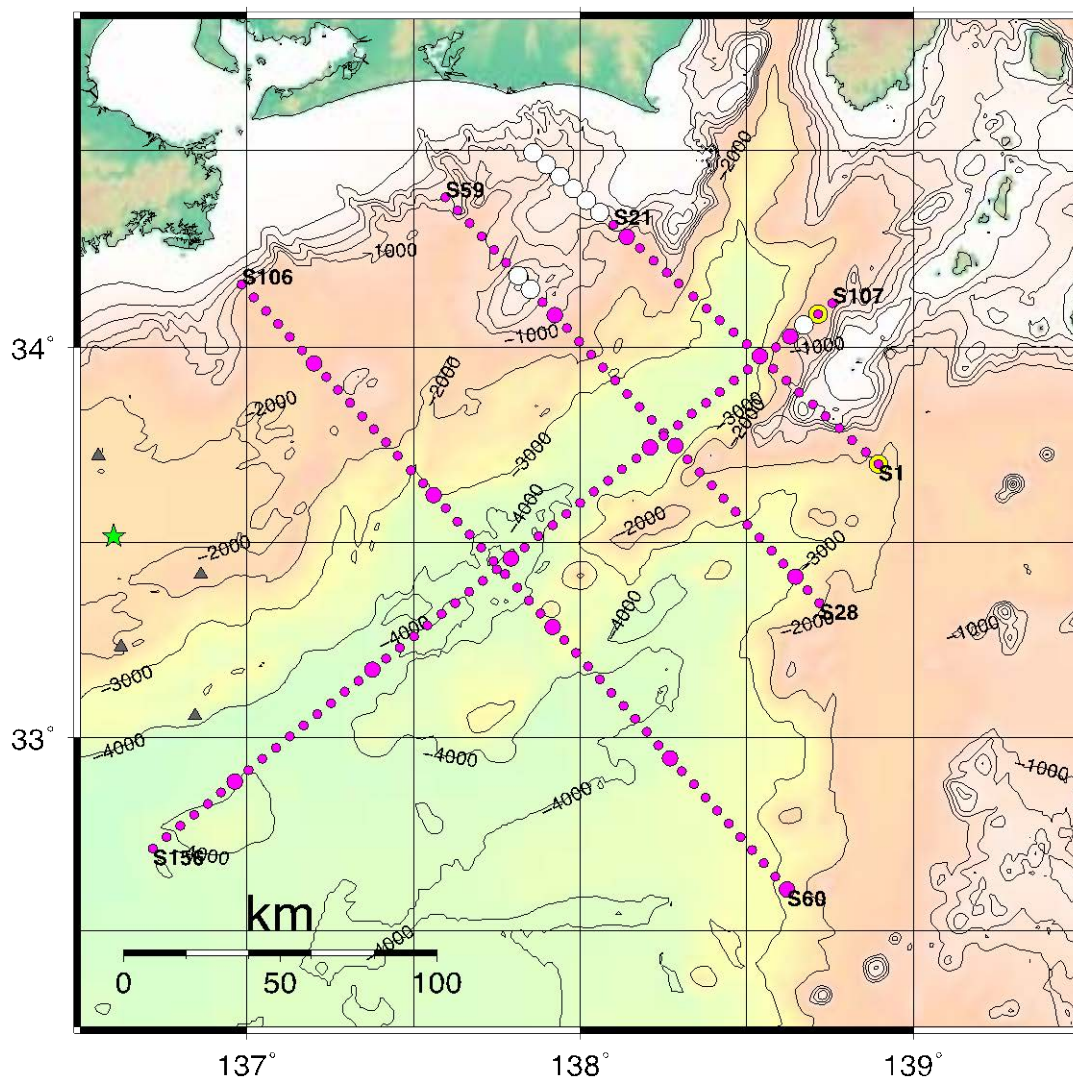
2 OBSs were not recovered.

(3) Cruise log:

Date		Remarks
2012/11/09	Fri..	Departure from JAMSTEC (Yokosuka), and transit to survey area Standby due to weather condition
2012/11/10	Sat..	Recovery and calling of OBSs
2012/11/11	Sun.	Recovery of OBSs, transit to off Omaezaki due to weather condition
2012/11/12	Mon.	Standby due to weather condition
2012/11/13	Tue.	Recovery of OBSs
2012/11/14	Wed.	Standby due to weather condition
2012/11/15	Thu.	Standby due to weather condition, transit to survey area
2012/11/16	Fri.	Recovery of OBSs
2012/11/17	Sat.	Recovery of OBSs, standby due to weather condition
2012/11/18	Sun.	Transit to survey area
2012/11/19	Mon.	Recovery of OBSs
2012/11/20	Tue.	Recovery of OBSs
2012/11/21	Wed.	Standby due to weather condition, recovery of OBSs
2012/11/22	Thu.	Recovery of OBSs
2012/11/23	Fri.	Recovery and calling of OBSs, standby due to weather condition
2012/11/24	Sat.	Recovery and calling of OBSs
2012/11/25	Sun.	Transit to Yokosuka
2012/11/26	Mon.	Arrival at Yokosuka HQ

(4) Seismic lines

1) Location map of OBSs



Magenta circles show the recovered OBS positions. Yellow hemming circles are not retrieved sites.

White circles are already recovered.

4. Notice on using:

This cruise report is a preliminary documentation as of the end of the cruise.

This report may not be corrected even if changes on contents (i.e. taxonomic classifications) may be found after its publication. This report may also be changed without notice. Data on this cruise report may be raw or unprocessed. If you are going to use or refer to the data written on this report, please ask the Chief Scientist for latest information. Users of data or results on this cruise report are requested to submit their results to the Data Management Group of JAMSTEC.