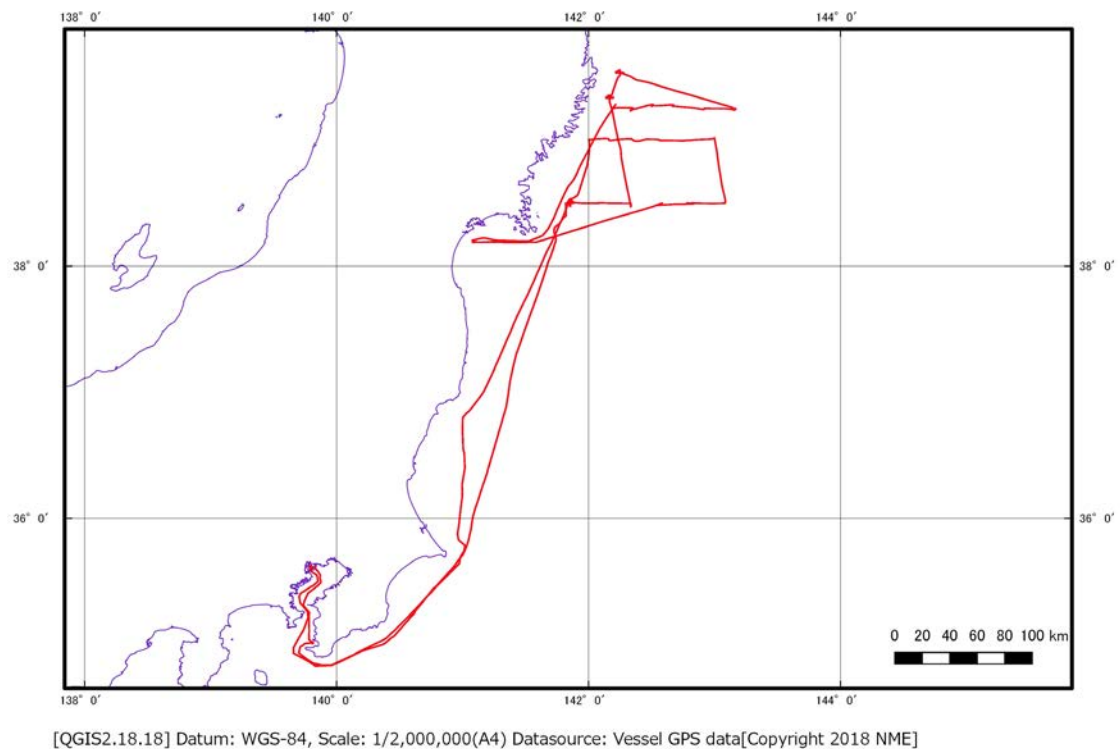


Cruise Summary

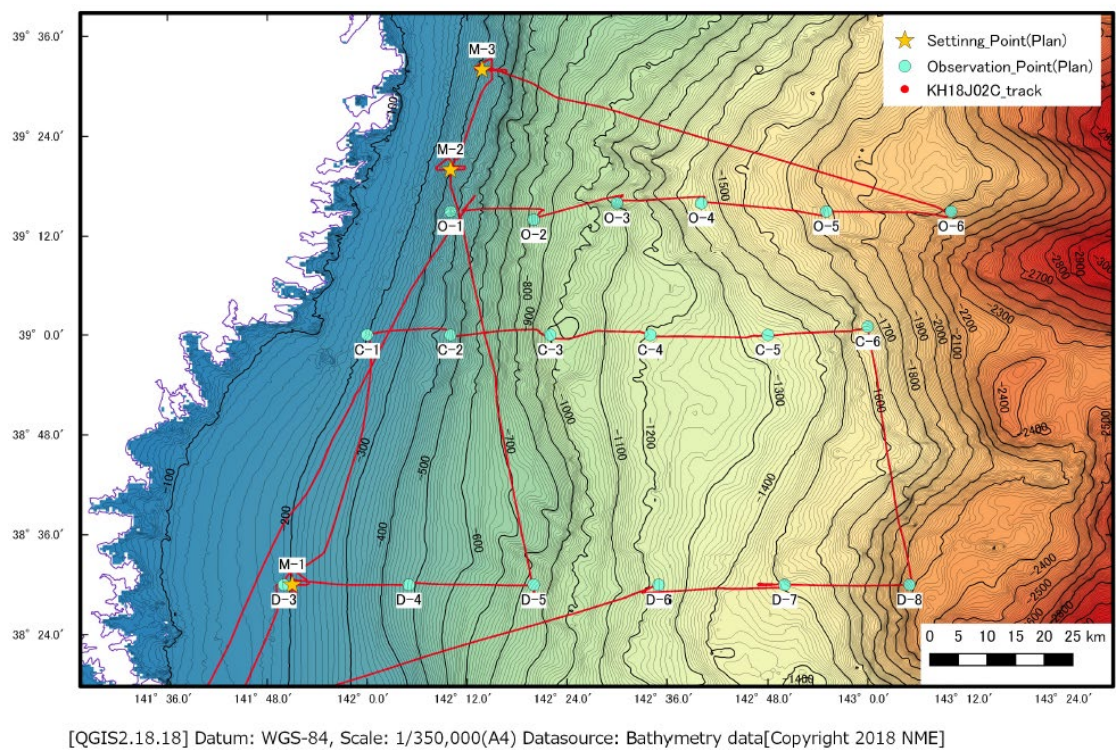
1. Cruise Information

Cruise ID	KH-18-J02C
Name of vessel	R/V Hakuho Maru
Title of the cruise	Researches on marine ecosystem dynamics in the Tsunami affected area off Sanriku
Chief scientist [Affiliation]	Shuichi Watanabe Project Team for Analyses of Changes in East Japan Marine Ecosystems, JAMSTEC
Representative of the Science Party [Affiliation]	Shinji Tsuchida Project Team for Analyses of Changes in East Japan Marine Ecosystems, JAMSTEC
Title of proposal	Researches on marine ecosystem dynamics in the Tsunami affected area off Sanriku
Cruise period	July 1st, 2018 ~ July 9th, 2018
Ports of departure / arrival	Tokyo ~ Tokyo
Research area	Off Sanriku

Research map



Cruise Track



Research Map

2. Overview of the Observation

Overview of the observation

The project of Tohoku Ecosystem-Associated Marine Sciences (TEAMS) aims to investigate marine ecosystems that were drastically changed by the disaster, to understand the process of recover from the damages of the Earthquake, and to help the reconstruction and sustainable development of fisheries. For achieving that projects objectives, the roles of our unit, Research Unit for Ecosystem Monitoring, is to research the basic hydrographic structure and the long-term change of marine environments, to conduct the geographical survey, and so on.

In the KH-18-J02C cruise, we moored two Landers, an ADCP and two SEA-SAW off Sanriku to obtain variation of temperature, salinity, current and others for ecosystem model. We also conducted the hydrographic observation using CTD-system to obtain the hydrographic information at 20 stations and collected zooplankton.

Title of project	Analyses of Changes in East Japan Marine Ecosystems, Tohoku Ecosystem-Associated Marine Sciences
------------------	---