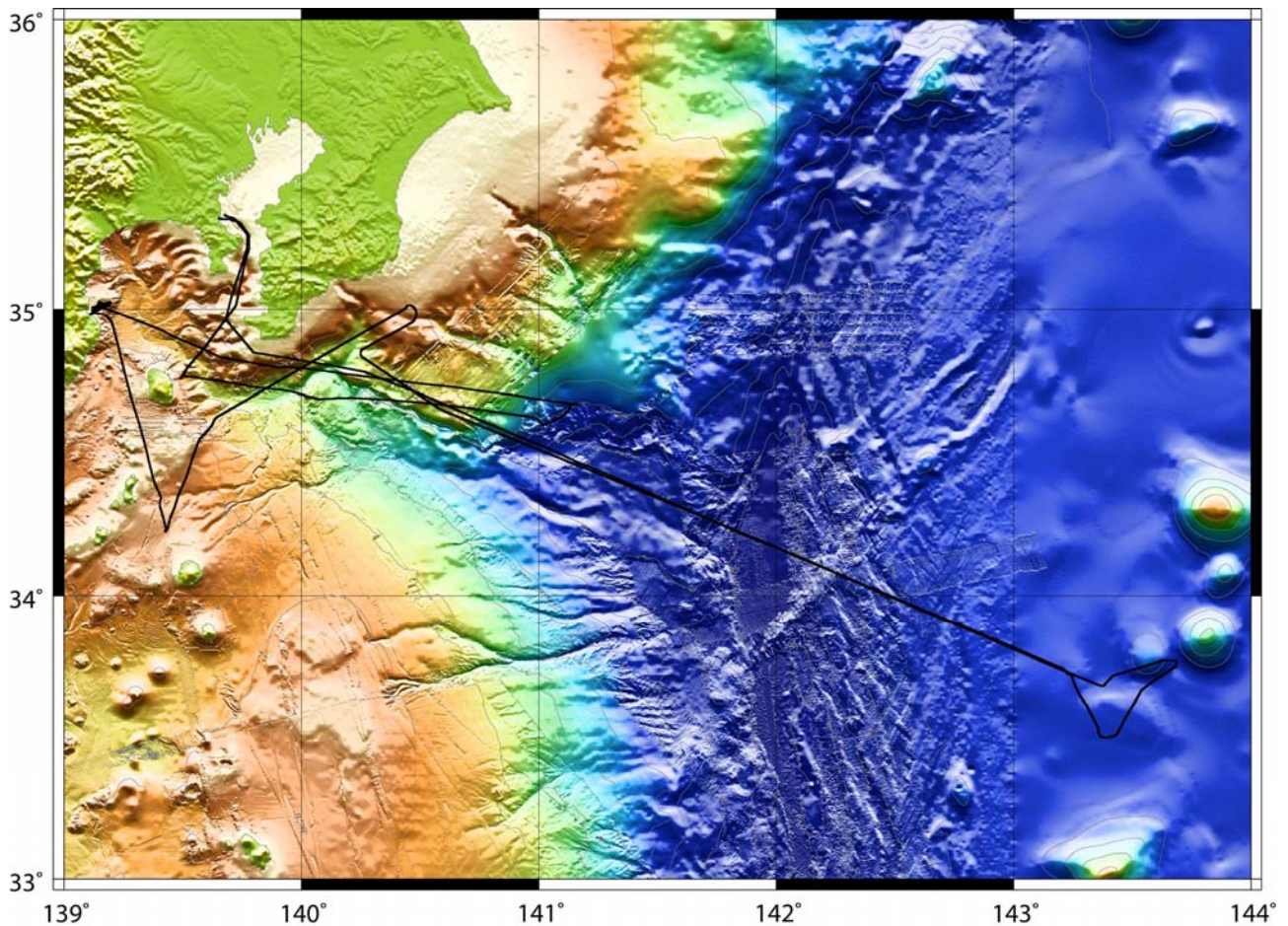


Cruise summary

1. Cruise Information :

- (1) Cruise number, Ship name: KR09-07, R/V Kairei
- (2) Title of the cruise: 2009FY “Seismic study off Boso region”
- (3) Chief Scientist [Affiliation]: Seiichi MIURA [JAMSTEC]
- (4) Representative of Science Party [Affiliation]: Yoshio Fukao [JAMSTEC]
- (5) Title of proposal: High resolution deep seismic study in and around the Sagami Bay and off Boso Peninsula
- (6) Cruise period, Port call: 2009/7/5-7/12, Yokosuka to Yokosuka
- (7) Research Area: Off-Boso
- (8) Research Map:



2. Overview of Observation :

(1) Objectives :

IFREE have conducted seismic surveys off Boso region since 2008, to understand complex tectonics associated with complicated plate geometries with subducting Pacific and Philippine Sea Plates beneath the Kanto region. Moreover, seismogenesis around Boso region is uniquely varied as great earthquakes and slow slip events (SSE). The subducting Philippine Sea Plate beneath Kanto region is not a typical oceanic crust but an island-arc crust.

The objectives of this cruise are to reveal the structural characteristics off-Boso region with multi-channel seismic system (MCS) contributing the site characterizations of drill points of Kanto Asperity Project (KAP).

(2) List of observation instruments :

1) Multi-channel seismic (MCS) reflection system

MCS survey have been conducted off-Boso region using a tuned airgun array of 7800 cu. in. and a 444-ch hydrophone streamer with 12.5-m group interval.

2) Bathymetry, magnetics and gravity observation

During the cruise, bathymetry, magnetics and gravity data have been recorded continuously by SEABEAM2112.004, three component magnetometer and gravity meter, respectively.

3) XBT

We have conducted two XBT to correct the sonic speed for the bathymetry survey.