

Cruise Summary

1. Cruise Information

- 1) Cruise ID, Name of Vessel: YK11-04, R/V Yokosuka
- 2) Title of the Cruise: “Shinkai 6500” Research Dive, Deep-sea Research, FY2011
- 3) Principal Investigator & Representative of Science Party: Takao Yoshida (Japan Agency for Marine-Earth Science and Technology (JAMSTEC))
- 4) Title of Proposal: Genome diversity in the chemoautotrophic symbiont of *Calyptogena* clams.
- 5) Cruise Period: August 16, 2011 ~ August 20, 2011
- 6) Port Call: from Hachinohe (August 16, 2011) to JAMSTEC (August 20, 2011)
- 7) Research Area: Off South-East Hokkaido, Kuril Trench and Off Sanriku, Japan Trench
- 8) Research map: (Fig.1)
- 9) Science Party: Yoshihiro Takaki, Masaaki Konishi, Yukiko Nagai, Genki Ozawa (Institute of Bigoceans, JAMSTEC), Masatoshi Tsukahara (Biojet co. Ltd.), Akihiro Tame (Marine Works Japan Ltd.), Koji Inoue (Atmosphere and Ocean Research Institute (AORI), The University of Tokyo), Sei-ichi Okumura, Mitsuru Jimbo, Haruka Shibata, Kazuma Kimura, Kenta Adachi (School of Marine Biosciences, Kitasato University), Kei Sato (The University Museum, The University of Tokyo)

2. Overview of Observations

To investigate the genome diversity of *Calyptogena* symbionts, we planned to two dives at Kuril trench and Japan trench. During the cruise, several biological samples, such as *Calyptogena* clams, Sea cucumber, etc., and segment by MBARI cores were collected. After dive, the clams were immediately dissected, and blood, serum, and other tissues were frozen in liquid nitrogen and stored at -80°C until used. Other samples were also stored at -80°C. Detailed analyses of these samples will be performed after the cruise.

YK11-04 YOKOSUKA / OFF SANRIKU vessel track

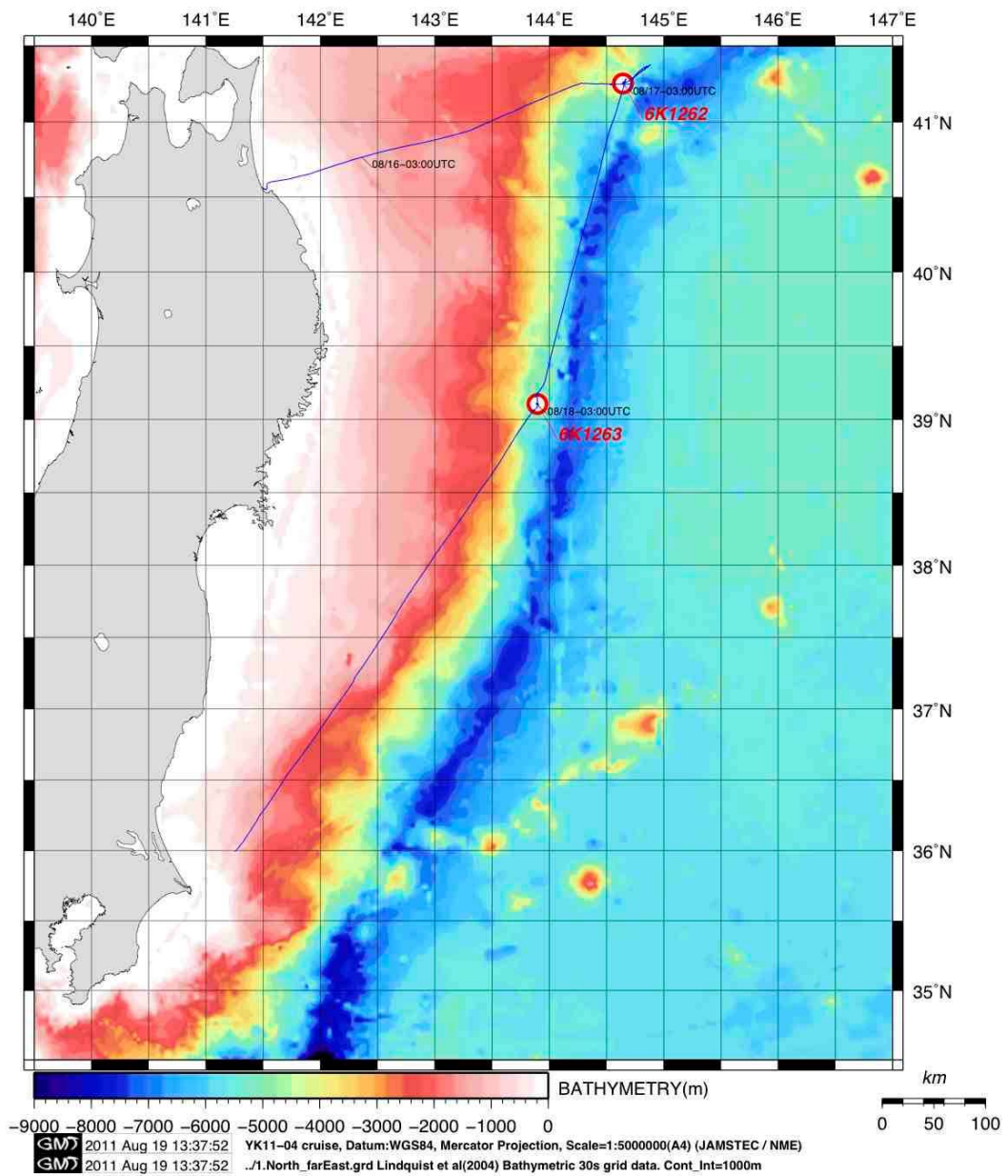


Fig1. The track chart of the R/V Yokosuka research cruise YK11-04