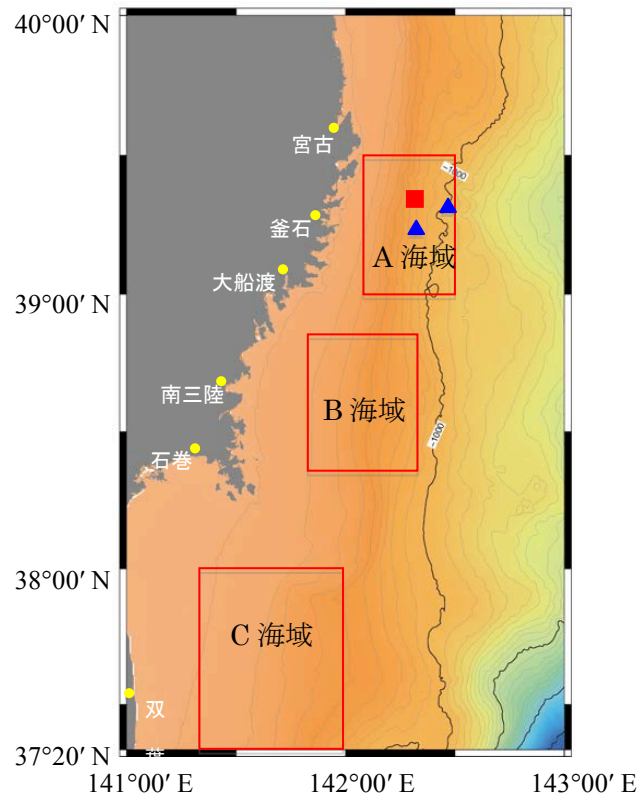


Cruise Summary

1. Cruise Information

- Cruise ID KS-16-J03
- Name of vessel SHINSEI MARU
- Title of the cruise Researches on marine ecosystem dynamics off Sanriku
- Chief scientist Shinji Tsuchida [JAMSTEC]
- Representative of the Science Party Shinji Tsuchida [JAMSTEC]
- Title of proposal Researches on marine ecosystem dynamics off Sanriku
- Cruise period March 4th –11th 2016
- Ports of departure / call / arrival JAMSTEC/JAMSTEC
- Research area off Sanriku
- Research map 40°00' N



2. Overview of the Observation

- Topographic survey

During the cruise, two lines off Iwate were topographically surveyed.

- Quantitative observation of benthic animals and debris using by the stereo camera system

The quantitative biomass of benthic animals and mass of marine debris were observed by the stereo camera system loaded inside of the Hyper-Dolphin skid for establishing the habitat models.

- Behavior and distribution patterns of commercial species recorded by the bio-tracking system

Five bio-tracking base stations and an ADCP deployed off Otsuchi, 700m depth along with the deep-sea canyon, were successfully recovered.

- Off shore environmental dynamics measured by the long term monitoring system

Long term monitoring systems deployed off Kamaishi deep-sea canyon in October 2014 at 760m depth and off Otsuchi in May 2015 at 1000m depth were recovered successfully and obtained data sets.

- Title of project

Project Team for Analyses of Changes in East Japan Marine Ecosystems
(Tohoku Ecosystem-Associated Marine Sciences)