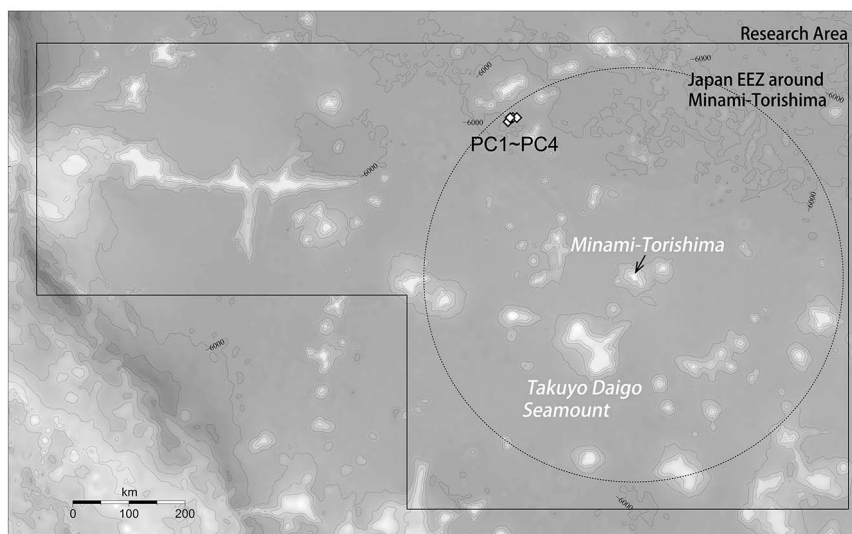
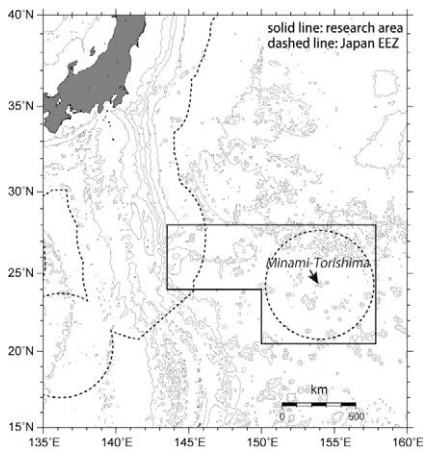


Submission date May 9, 2014

Cruise Summary

1. Cruise Information

- Cruise ID: KR14-02
- Name of vessel R/V Kairei
- Title of the cruise: Survey of REY-rich mud around Minami-Torishima Island.
- Chief Scientist: IJIMA, Koichi [JAMSTEC]
- Representative of the science party: IJIMA, Koichi [JAMSTEC]
- Cruise period: Jan. 22 to Feb. 5, 2014
- Ports of call: Saipan to Yokosuka
- Research area: Off Minami-Torishima (Marcus Island)



2. Overview of the Observation

● Objective

Our objective in this cruise was to carry out a detailed investigation of REY-rich mud off east and south of Minami-Torishima, especially around the sites where we found extremely REY-rich mud in cruise KR13-02. Concretely, (1) Obtain sub-bottom profiler data throughout the cruise in the research area to confirm sub-seafloor sedimentary sequences and (2) Collect sediment core samples to examine abundance of rare earth elements.

● Preliminary Result

We obtained sub-bottom profiler data in the research area and collected 4 sediment cores at 4 sites.

The detailed results are confidential matter.