

Cruise Summary

1. Cruise ID/Name of vessel : KY12-01 Leg2 / R/V Kaiyo
2. Title of proposal : Development and Improvement of Seafloor observation Network for Earthquakes and Tsunamis
Representative of the Science Party [Affiliation] : Yoshiyuki Kaneda/JAMSTEC/JS11-03
3. Chief scientist [Affiliation] : Hiroyuki Matsumoto / JAMSTEC
4. Science party (List) [Affiliation, assignment etc.] :
Tohru Kodera / NME
5. Research area : off Kii-suido
6. Cruise period : 2012/01/19(Thursday) ~ 2012/01/28(Saturday)

Cruise Summary:

The present survey KY12-01 Leg2 aims to obtain high resolution multi-beam bathymetric data by using “SEABEAM 2100” equipped with R/V “Kaiyo” especially around the observatories in the DONET2 area off Kii-suido. The previous survey was carried out by means of R/V “Yokosuka” in last November, which covers the area being belonging to the node 2C, 2D and 2E. So, we focused on the area of the node 2A, 2B, 2F, and 2G. Additionally, the back-bone cable route between 2G and 2F was also our present target, because some steep slope and cliff are locally visible in the bathymetry map. The present cruise would be done by means of bathymetry survey so all days were used if sea state was allowed.

The obtained data during the present survey was depicted in the figure below. The area of the node 2A, 2B, and 2G were completed. Initially, we planed to complete all nodes by the end of this cruise, but windy days continued for the first three days, so we have to stay near shore.

In conclusion, a multi-beam high resolution map could be made in the area of the node the node 2A, 2B, and 2G during the present KY12-01 Leg2 cruise. We continue to finalize an appropriate observatories’ layout by using multi-beam bathymetry map etc. Although some survey areas have been still left, the next survey is planned on May 2012 by R/V “Yokosuka”.

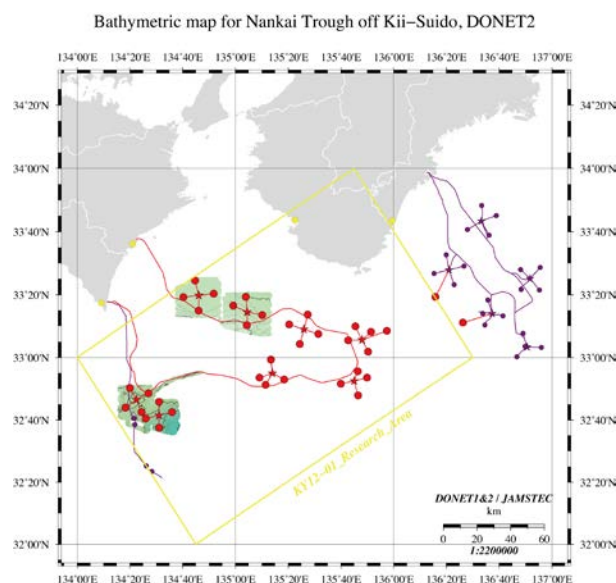


Figure. Multi-beam bathymetry obtained in the present cruise.