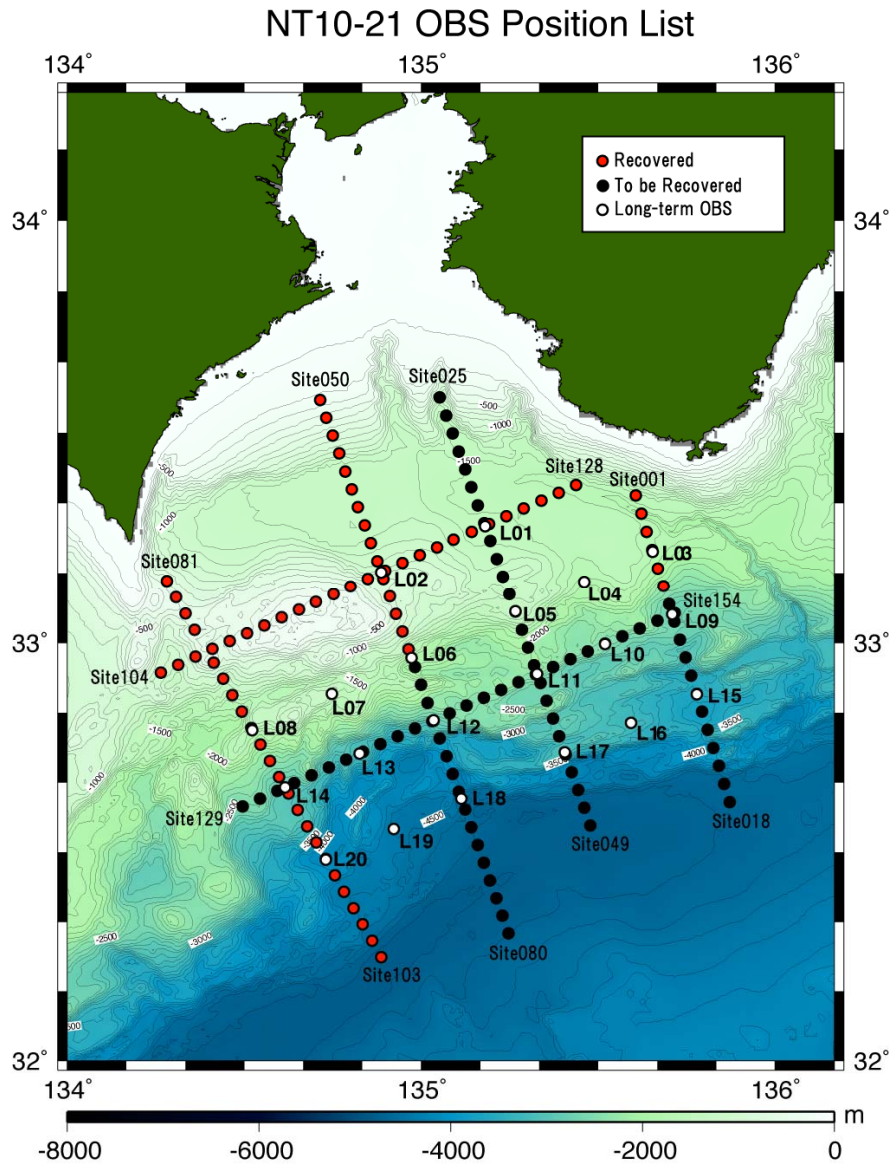


## Cruise summary

### 1. Cruise Information :

- (1) Cruise number, Ship name: NT10-21, R/V Natsushima
- (2) Title of the cruise: 2010FY “Seismic survey and seismicity study off Shikoku island”
- (3) Chief Scientist [Affiliation]: Shin’ichiro Kamiya [JAMSTEC]
- (4) Representative of Science Party [Affiliation]: Yoshiyuki Kaneda [JAMSTEC],
- (5) Title of proposal:  
Research for Interaction between the Tokai, Tonankai and Nankai Earthquakes  
- Seismic survey and seismicity study off Shikoku island -
- (6) Cruise period, Port call:  
2010/12/20-12/29, from JAMSTEC (Yokosuka) to JAMSTEC (Yokosuka)
- (7) Research Area: Off Shikoku island and Kii peninsula
- (8) Research Area Map:



Red and black circles are the OBSs recovered during the cruise NT10-21 and to be recovered during the cruise NT11-01, respectively. Open circles are long-term OBSs (unrecovered).

## 2. Overview of Observation :

### (1) Objectives:

This research cruise was conducted as a part of the study of “Research program concerning interaction between the Tokai, Tonankai, and Nankai Earthquakes” funded by the Ministry of Education, Culture, Sports, Science, and Technology of Japan. The objectives of this cruise to reveal seismic structure and seismic activity off Shikoku island and Kii peninsula, Nankai trough.

During the cruise of NT10-21, 69 ocean bottom seismographs (OBSs) have been recovered. These OBSs were deployed during the cruise of KR10-11\_Leg1 by R/V Kaiei in October and November 2010.

### (2) Observations:

#### 1) Recovery of ocean bottom seismograph (OBS)

During the cruise of NT10-21, 69 OBSs have been retrieved.

#### 2) Others

During the cruise, bathymetry data have been recorded continuously.