

Cruise Summary

1. Cruise Information

- Cruise ID: YK18-06
- Name of vessel: YOKOSUKA
- Title of cruise: Geological and Geophysical Study of subduction-zone earthquake : Paleoseismology in the slope to trench
- Chief Scientist [Affiliation]: Toshiya Kanamatsu [CEAT-JAMSTEC]
- Title of proposal: Geological and Geophysical Study of subduction-zone earthquake : Paleoseismology in the slope to trench
- Representative of Science Party [Affiliation]: Shuichi Kodaira [CEAT-JAMSTEC]
- Cruise period: 21st, May – 29th, May 2018
- Ports of departure / call / arrival: : Yokosuka - Yokosuka
- Research area: Japan Trench
- Research map

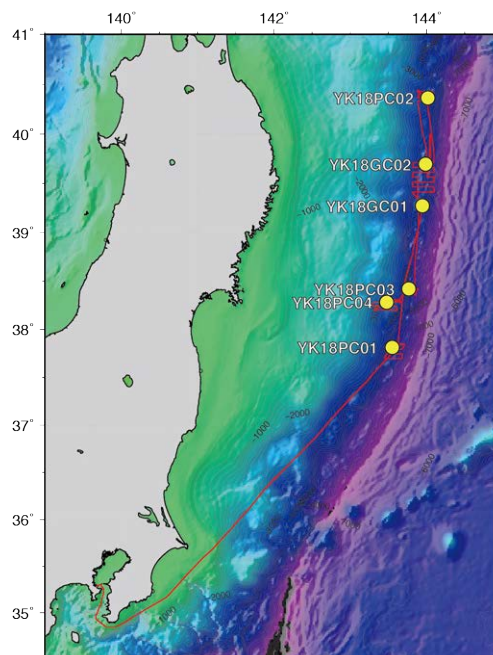


Figure 1: Sites for piston-coring and gravity-coring, and ship track during YK18-06 cruise

2. Overview of Research Activities

- Tracking geological record of mega-earthquakes is a key to understand the property of devastating Tohoku M9-earthquake. The target area in this cruise was the terrace in the lower landward slope: so called mid slope terrace. The water depth ranges from 4000 to 6000m. We visited the area, where was not been surveyed by the previous cruises NT13-19 and YK14-E01, and compensate the interval which we could not obtained high quality sample for analyzing historical record in the previous cruises. Bathymetric and sub bottom surveys were also conducted. We conducted 4 piston coring, and 2 gravity coring operations. Detailed analysis will be conducted after the cruise.