

Cruise Summary

1. Cruise Information

- Cruise ID: KY14-11 Leg1
- Name of vessel: Kaiyo
- Title of the cruise: Caissons Deployments of the seafloor network for earthquake and tsunamis.
- Chief scientist [Affiliation]: Shuhei Nishida [JAMSTEC]
- Representative of the Science Party and Title of proposal:
Yoshiyuki KANEDA [JAMSTEC], Caissons Deployments of the seafloor network for earthquake and tsunamis.
Eiichiro Araki [JAMSTEC], Development of long-term borehole observatory in the Nankai trough.
- Cruise period: 20th, July, 2014 ~ 26th, Aug., 2014
- Ports of departure, call and arrival:
Sumitomo Heavy Industries, Ltd. Yokosuka Works ~ Shingu port
- Research area: off Kii Channel and Kumano-nada

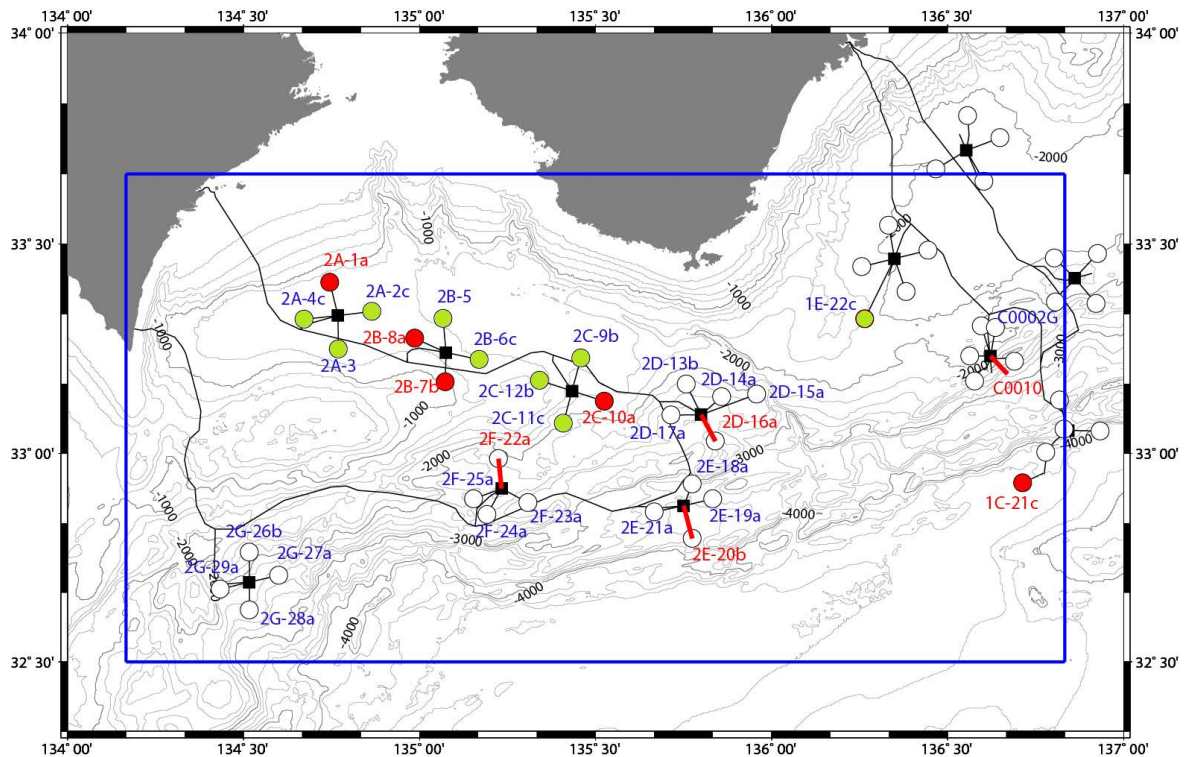


Fig.1 the Research Area of KY14-11

2. Overview of the Observation

In this cruise, seven operations of caissons deployment were carried out. Two caissons were deployed for DONET2 observatory “2A-1” and “2B-8” as CS26 and CS28. The installed condition of these caissons were good by means of acoustic signals, i.e., installation tilt is within 7 degrees.