

YOKOSUKA DEEP TOW YKDT 00076 Submersible Conductivity-Temperature-Depth Profiler (CTD)

Last Modified: 2021-06-01

[ReadMe](#) [Observation Data](#) [Data Format](#)

Dive No.: **YKDT 00076**

Submersible Conductivity-Temperature-Depth Profiler (CTD): Processed (DMO)-QCed

Data Policy: [JAMSTEC](#)

Observation Items: Pressure, Temperature, Salinity

Science Keywords:

OCEANS > OCEAN TEMPERATURE > WATER TEMPERATURE

OCEANS > SALINITY/DENSITY > SALINITY

Cruise Report

http://www.godac.jamstec.go.jp/catalog/data/doc_catalog/media/YK10-04_all.pdf

For Using Data

Principal Investigator

Data Management Office

Use Constraints

See [Terms and Conditions](#) about constrain of use.

Data Citation

See [Terms and Conditions](#) about data citation.

Instrument

Instrument:

CTD measurement system equipped

on the Deep Ocean Floor Survey

System "YOKOSUKA DEEP TOW"



Overview

Deep Ocean Floor Survey System YOKOSUKA DEEP TOW is supported by R/V YOKOSUKA as the mother ship. YOKOSUKA DEEP TOW is designed to operate to a maximum depth of 6000 meters.

YOKOSUKA DEEP TOW measures pressure, water temperature and conductivity at 1Hz by an SBE 49 FastCAT CTD sensor manufactured by Sea-Bird Electronics, Inc. SBE 49 FastCAT CTD sensor facing horizontal leftward is installed on the left side of YOKOSUKA DEEP TOW, and its seawater intake is positioned approximately 1.2m above the bottom of YOKOSUKA DEEP TOW. This CTD sensor is used for monitoring the depth of YOKOSUKA DEEP TOW. The CTD sensor has not been calibrated after the installation on YOKOSUKA DEEP TOW.

The internal clock of the CTD sensor is synchronized with the clock of control PC before the dive. The clock of control PC is synchronized with the NTP (Network Time Protocol) server on the mother ship.

Specifications

Model	Sensor	Measurement range	Accuracy	Stability per year	Resolution
SBE 49 FastCAT	Temperature	-5 ~ +35 °C	±0.002 °C	±0.0024 °C	0.0001 °C
	Conductivity	0 ~ 9 S/m	±0.0003 S/m	±0.0036 S/m	0.00005 S/m
	Pressure	0 ~ 7000 m	±7 m	±3.5 m	0.14 m

Submersible vehicle positioning data

The position of the submersible vehicle relative to that of the mother ship is determined by SSBL (Super Short Base Line) method of the acoustic underwater positioning which consists of the transponder mounted on the submersible vehicle and the receiver array mounted on the bottom of the mother ship.

In SSBL method, the position of the submersible vehicle relative to that of the mother ship is determined by the combination of the direction obtained from the phase difference measured from the angle of received acoustic waves at the receiver array and the distance calculated from the time of the acoustic wave propagation. The positioning accuracy relies on the line of sight distance and angle between the mother ship and the submersible vehicle, and rolling and pitching of the mother ship, etc. SSBL method is easy to operate because of no requirement to deploy seafloor baseline transponder(s) although the positioning accuracy of SSBL method is a little lower than that of LBL (Long Base Line) method.

Vertical sound velocity profile is required for the accurate distance to calculate from the time of the acoustic wave propagation. Therefore, the vertical temperature profiles of every sea regions were measured by using XBT etc.

The position of the submersible vehicle is determined by adding the relative distance between the mother ship and the submersible vehicle to GPS position of the mother ship. The conversion of the relative distance between the mother ship and the submersible vehicle to the coordinates of latitude and longitude uses the simplified formula with the area-dependent coefficients of every 30 degrees of latitude and longitude provided by Hydrographic and Oceanographic Department, Japan Coast Guard.

Published data

The data available on this web site are CTD data, latitude, longitude and roll-pitch-heading angles obtained by YOKOSUKA DEEP TOW every second.

The data of pressure, temperature, and salinity is visually checked to find noises, and the noise is replaced with missing values if it obviously seems abnormal.

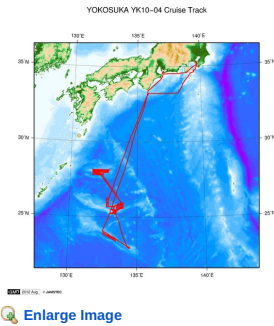
The positioning data of YOKOSUKA DEEP TOW is manually eliminated the noise of the moving at higher speed than 1 knot, which is the maximum operation speed of YOKOSUKA DEEP TOW, and is compensated by linear interpolation.

The number of significant digits of data is determined as the following list, by considering the accuracy of the sensors.

Data	Raw	On this web site
Pressure	0.001 [dbar]	0.1 [dbar]
Temperature	0.0001 [°C]	0.01 [°C]
Salinity	0.0001 [PSU]	0.01 [PSU]

Related Information

☒ Cruise Data ☐ Dive Data



YK10-04

Ship Name: YOKOSUKA
Period: 2010-04-22 - 2010-05-10
Chief Scientist: Kenichiro Tani (JAMSTEC)
Proposal: Crustal and magmatic evolution of the Northwestern Philippine Sea
Title:

Update History

2021-06-01	An observation data was registerd.
------------	------------------------------------

JAMSTEC

Site Policy
Privacy Policy
Application for Data and Samples
Data Policy

What's New
Update History
Feeds

Lists

Publication List
Amount of Public Info.

Data

Map Search
Data Tree
Detailed Search

Information of the Ships

NATSUSHIMA
KAIYO
YOKOSUKA
MIRAI
KAIREI
CHIKYU
KAIMEI
SHINSEI MARU
HAKUHO MARU

Information of the Submersibles

KAIKO
SHINKAI 2000
SHINKAI 6500
DEEP TOW
HYPER-DOLPHIN
URASHIMA
YOKOSUKA DEEP TOW
6K Camera DEEP TOW
6K Sonar DEEP TOW
KM-ROV
POWER GRAB SAMPLER (SHELL)
POWER GRAB SAMPLER (CLOW)
BMS

Go to a Cruise Information

Cruise ID:

Go to a Dive Information

Dive ID:

Copyright 2011 Japan Agency for Marine-Earth Science and Technology



JAMSTEC 国立研究開発法人
海洋研究開発機構
JAPAN AGENCY FOR MARINE EARTH SCIENCE AND TECHNOLOGY

YOKOSUKA DEEP TOW YKDT 00076 Submersible Conductivity-Temperature-Depth Profiler (CTD)

Last Modified: 2021-06-01

[ReadMe](#) [Observation Data](#) [Data Format](#)

Dive No.: **YKDT 00076**

Submersible Conductivity-Temperature-Depth Profiler (CTD): Processed (DMO)-QCed

Data Policy: [JAMSTEC](#)

Submersible CTD Qced

Header part

No.	Column	Item	Format	Remarks
1	1	Header ID	a1	fixed as '#'
2	3 - 37	Submersible vehicle	a35	e.g. YOKOSUKA-DEEP-TOW / KM-ROV
3	39 - 48	Data ID	a10	CTD
4	50 - 70	Cruise ID	a21	e.g. MRYX-XX(_legx)
5	78 - 81	Dive number	a4	

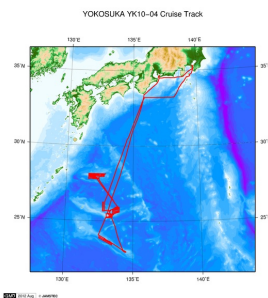
Data part

No.	Column	Item	Unit	Format	Remarks
1	1 - 8	Date	-	i8	YYYYMMDD (LST)
2	10 - 15	Time	-	i6	hhmmss (LST)
3	17 - 26	Latitude	degree	f10.5	No sign for the northern hemisphere. Negative for the southern hemisphere.
4	28 - 37	Longitude	degree	f10.5	No sign for the eastern hemisphere. Negative for the western hemisphere.
5	39 - 48	Pressure	dbar	f10.1	
6	50 - 59	Temperature	deg-C	f10.2	ITS-90
7	61 - 70	Salinity	PSU	f10.2	PSS-78
8	72 - 81	Dissolved oxygen	ml/l	f10.1	
9	83 - 92	Altitude	m	f10.1	
10	94 - 103	Vehicle roll	degree	f10.1	
11	105 - 114	Vehicle pitch	degree	f10.1	
12	116 - 125	Vehicle heading	degree	f10.1	

Missing value is presented by '-999'.

Related Information

☒ Cruise Data ☐ Dive Data



[Enlarge Image](#)

YK10-04

Ship Name: YOKOSUKA

Period: 2010-04-22 - 2010-05-10

Chief Scientist: Kenichiro Tani (JAMSTEC)

Proposal: Crustal and magmatic evolution of the Northwestern Philippine Sea

Title:

Update History

2021-06-01 An observation data was registered.

JAMSTEC

[Site Policy](#)

[Privacy Policy](#)

[Application for Data and Samples](#)

[Data Policy](#)

[What's New](#)

[Update History](#)

[Feeds](#)

Lists

[Publication List](#)

[Amount of Public Info.](#)

Data

[Map Search](#)

[Data Tree](#)

[Detailed Search](#)

Information of the Ships

[NATSUSHIMA](#)

[KAIYO](#)

[YOKOSUKA](#)

[MIRAI](#)

[KAIREI](#)

[CHIKYU](#)

[KAIMEI](#)

[SHINSEI MARU](#)

[HAKUHO MARU](#)

Information of the Submersibles

[KAIKO](#)

[SHINKAI 2000](#)

[SHINKAI 6500](#)

[DEEP TOW](#)

[HYPER-DOLPHIN](#)

[URASHIMA](#)

[YOKOSUKA DEEP TOW](#)

[6K Camera DEEP TOW](#)

[6K Sonar DEEP TOW](#)

[KM-ROV](#)

[POWER GRAB SAMPLER \(SHELL\)](#)

[POWER GRAB SAMPLER \(CLOW\)](#)

[BMS](#)

Go to a Cruise Information

Cruise ID:

Go to a Dive Information

Dive ID:

YOKOSUKA DEEP TOW YKDT 00076 Submersible Conductivity-Temperature-Depth Profiler (CTD)

Last Modified: 2021-06-01

[ReadMe](#) [Observation Data](#) [Data Format](#)

Dive No.: **YKDT 00076**

Submersible Conductivity-Temperature-Depth Profiler (CTD): Processed (DMO)-QCed

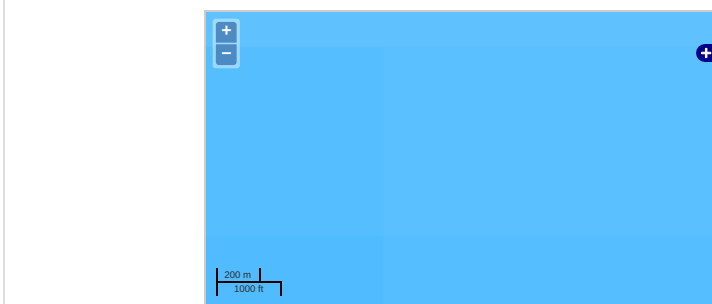
Data Policy: [JAMSTEC](#)

Observation Items: Pressure, Temperature, Salinity

Science Keywords:

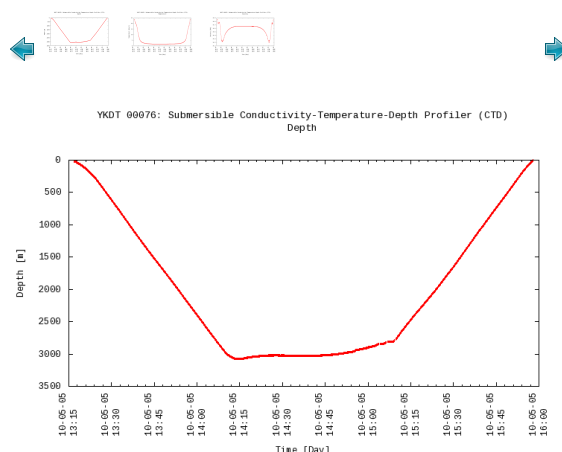
OCEANS > OCEAN > WATER
TEMPERATURE
OCEANS > SALINITY/DENSITY > SALINITY

Observation Map



Imagery reproduced from ...

Figures



Data List

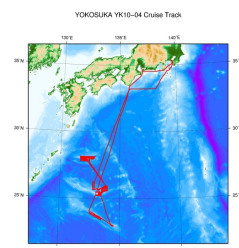
[Add to Basket](#)

File names

☐ YKDT_00076.txt

Related Information

[Cruise Data](#) [Dive Data](#)



[Enlarge Image](#)

YK10-04

Ship Name: YOKOSUKA
Period: 2010-04-22 - 2010-05-10
Chief Scientist: Kenichiro Tani (JAMSTEC)
Proposal: Crustal and magmatic evolution of the Northwestern Philippine Sea
Title:

Update History

2021-06-01 An observation data was registered.

[Privacy Policy](#)
[Application for Data and Samples](#)
[Data Policy](#)

What's New
[Update History](#)
[Feeds](#)

[Amount of Public Info.](#)

Data
[Map Search](#)
[Data Tree](#)
[Detailed Search](#)

[KAIYO](#)
[YOKOSUKA](#)
[MIRAI](#)
[KAIREI](#)
[CHIKYU](#)
[KAIMEI](#)
[SHINSEI MARU](#)
[HAKUHO MARU](#)

[SHINKAI 2000](#)
[SHINKAI 6500](#)
[DEEP TOW](#)
[HYPER-DOLPHIN](#)
[URASHIMA](#)
[YOKOSUKA DEEP TOW](#)
[6K Camera DEEP TOW](#)
[6K Sonar DEEP TOW](#)
[KM-ROV](#)
[POWER GRAB SAMPLER \(SHELL\)](#)
[POWER GRAB SAMPLER \(CLOW\)](#)
[BMS](#)

Cruise ID:

[Go to a Dive Information](#)

Dive ID:

Copyright 2011 Japan Agency for Marine-Earth Science and Technology



JAMSTEC 国立研究開発法人
海洋研究開発機構
JAPAN AGENCY FOR MARINE-EARTH SCIENCE AND TECHNOLOGY