



Shinsei-maru Cruise Report
KS-22-J02C

DONET Maintenance

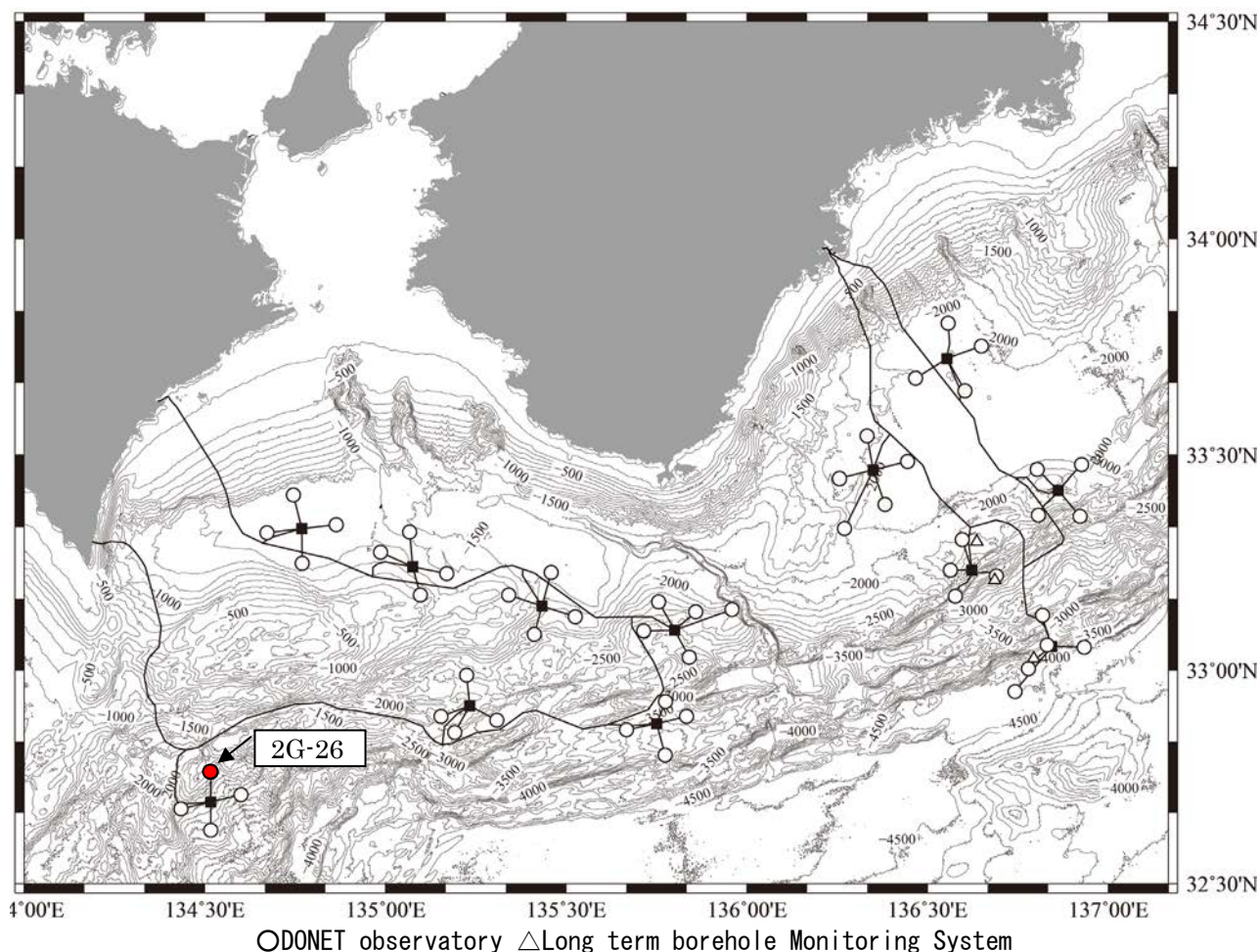
Kumano-nada
Off Kii-channel

Feb.14,2022-Feb.22,

Japan Agency for Marine-Earth Science and Technology
(JAMSTEC)

1. Cruise Information

- Cruise ID KS-22-J02C
- Name of vessel R/V Shinsei-maru
- Title of cruise DONET Maintenance
- Chief Scientist [Affiliation] Takashi YOKOBIKI [JAMSTEC]
- Cruise period 14-Feb. 2022 – 22 Feb. 2022
- Ports of departure / arrival JAMSTEC Yokosuka – Wakayama port
- Research map



Observatory No.	Latitude	Longitude	Depth [m]
2G-26	32-45.691°N	134-31.003°E	1,855

2. Research Proposal and Science Party

- Title of proposal DONET Maintenance
- Representative of Science Party
- Science Party (List)

Shuichi KODAIRA	[JAMSTEC]
Takashi YOKOBIKI	[JAMSTEC]
Shuichiro YADA	[JAMSTEC]
Kyohiko MITSUZAWA	[JAMSTEC]
Toshikatsu NASU	[NME]
Hisanori IWAMOTO	[NME]
Kenya YAMANAKA	[NME]

3. Dive summary (Research/Development Activities)

3.1 DIVE#2153 on 17 February 2022: Sediment Removal in the casing at the Observatory Site 2G-26.

In this dive, The ROV “Hyper-Dolphin” with the suction pump dived to remove sediment or sand in the hole that had been installed DONET sensing system. Before the removal operation, there was sand about 180cm thick at the bottom of the hole. The ROV landed at 9:52 in front of the hole, and after the hole was cleared of sand as well as various debris, the ROV left the seafloor at 10:43.



Photo-1 Inside the hole before removal operation



Photo-2 The lid and Sticks of trash

3.2 DIVE#2154 on 18 February 2022: DONET Sensor unit installation

The DONET sensor unit S/N C010 was placed in the Observatory site 2G-26. The ROV started dive at 13:32 and installed the OBS unit at 15:05. The pressure sensing package was set on seabed at 15:29. Due to the time limit for dive operation, Connection with the extension cable was postponed until the next dive.

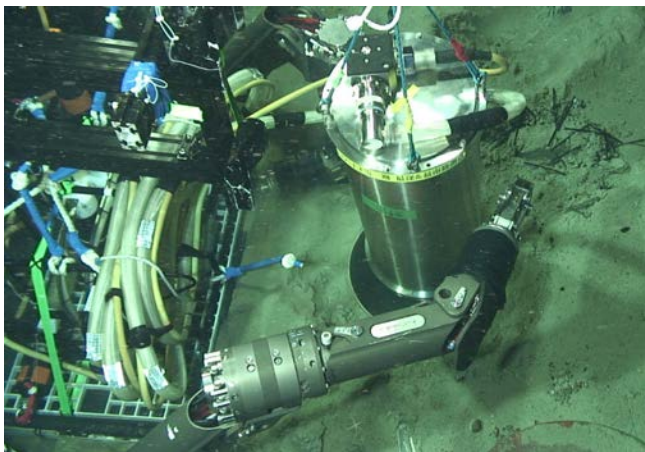


Photo-3 Installation of OBS unit



Photo-4 Condition of the Pressure sensing package

3.3 Dive#2155 on 19 February 2022: Connection to the DONET

The DONET sensor unit and DONET system connection work, which has been postponed on the 18th of February, was carried out in this dive. The ROV started dive at 7:25AM and landed at 8:50 near the Underwater Mateable Connector of the extension cable. It was connected to DONET sensor unit at 9:54AM, and support member in the terrestrial station informed us that the power line was normal. So, the ROV left seafloor at 10:03AM.

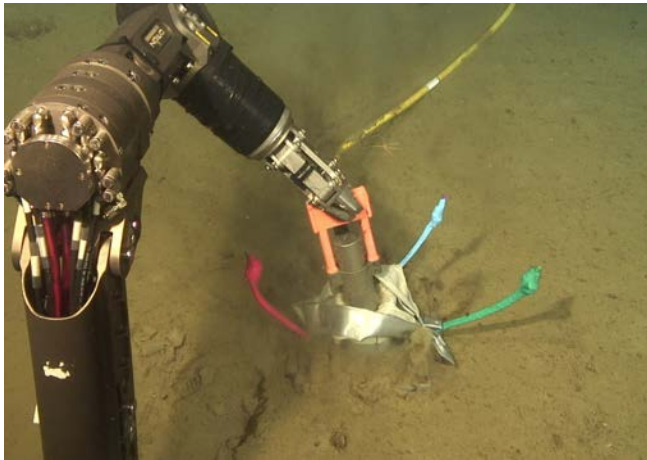


Photo-5 Underwater Mateable Connector



Photo-6 Connected Pressure sensing package

4. Notice on Using

This cruise report is a preliminary documentation as of the end of cruise.
This report is not necessarily corrected even if there is any inaccurate description (i.e. taxonomic classifications). This report is subject to be revised without notice. Some data on this report may be raw or unprocessed. If you are going to use or refer the data on this report, it is recommended to ask the Chief Scientist for latest status.
Users of information on this report are requested to submit Publication Report to JAMSTEC.

<http://www.godac.jamstec.go.jp/darwin/explain/1/e/#report>
E-mail: submit-rv-cruise@jamstec.go.jp