

## Natsushima Cruise Report

NT10-14

Experience embarkation for winners of  
'Draw your dreams of the ocean on a postcard contest'

Suruga bay

August 13, 2010 – August 17, 2010

Japan Agency for Marine-Earth Science and technology  
(JAMSTEC)

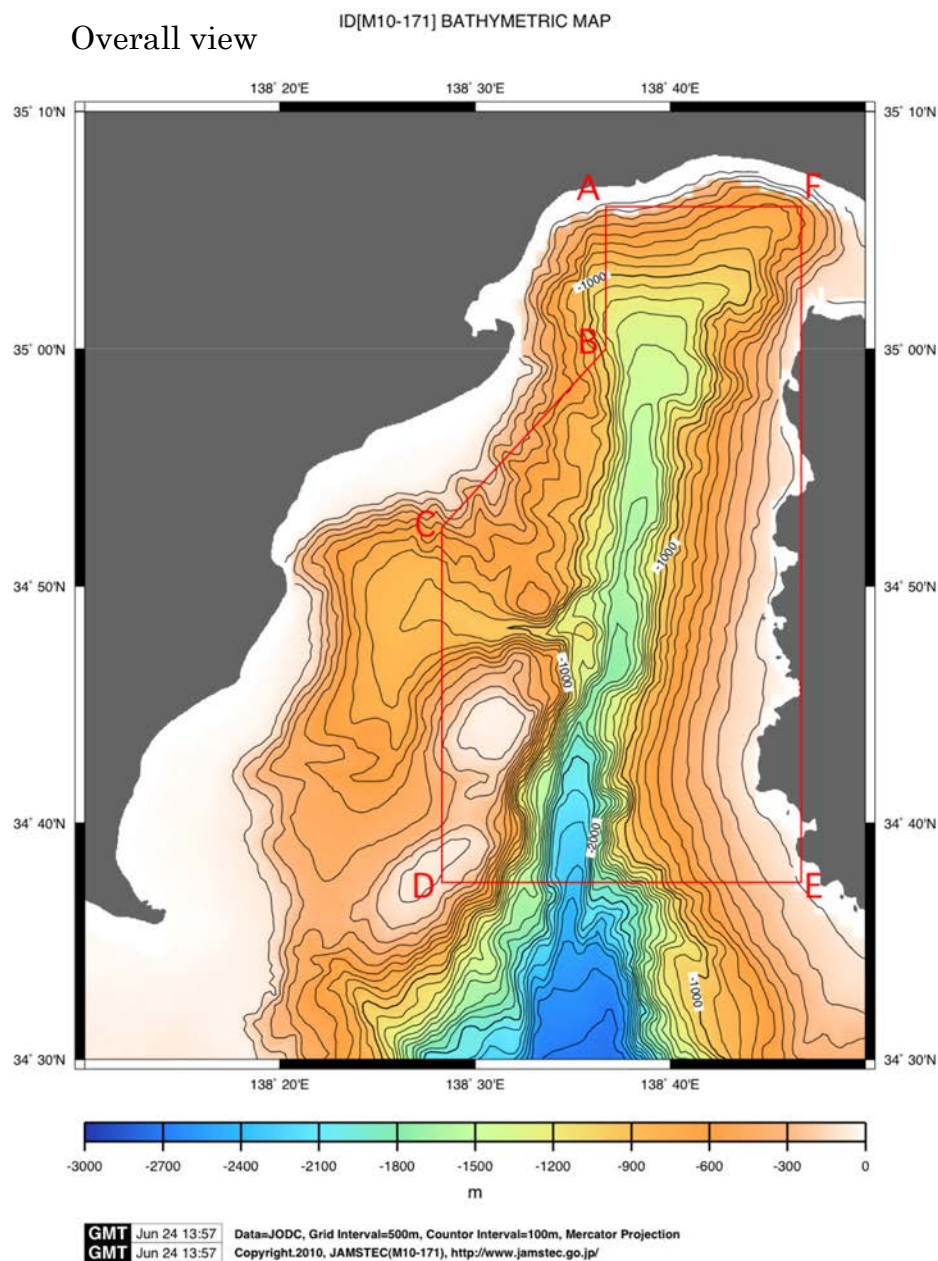
## Content

1. Cruise Information .....	3
2. Overview .....	5
2-1 Purpose .....	5
2-2 Duration .....	5
2-3 Implementation detail .....	5
2-4 Consideration .....	5
2-5 Acknowledgement .....	5
3. Notice on Using .....	6

## 1. Cruise Information

Cruise number : NT10-14  
Ship name : Natsushima  
Title of the cruise : Experience embarkation for winners of 'Draw your dreams of the ocean on a postcard contest'  
Chief scientist[Affiliation] : Shinichi Suzuki [JAMSTEC]  
Representative of the Science Party [Affiliation] : Shozo Tashiro [JAMSTEC]  
Cruise period : August 13, 2010 – August 17, 2010  
Port call : Shimizu – Yokosuka  
Dive area : Suruga bay

### Overall view



Diving point :

Within the sea area of Suruga Bay surrounded by A to F below, the sea area is 600m or deeper, excluding land area.

A: 35°06.00'N, 138°36.70'E

B: 35°00.00'N, 138°36.70'E

C: 34°52.50'N, 138°28.30'E

D: 34°37.50'N, 138°28.30'E

E: 34°37.50'N, 138°46.70'E

F: 35°06.00'N, 138°46.70'E

→The most likely diving site is 34°54.50'N, 138°39.50'E, 1500m deep off the coast of Toi.

## 2. Overview

### 2-1 Purpose :

The purpose of this voyage was to win a supplementary prize for the 12th nationwide child of 'Draw your Dreams of the Ocean on a postcard contest', allowing the winning children to see and experience ocean research sites.

The aim was also to educate and enlighten children who have dreams of the ocean. As well as last year, the child who won the winner of the president of JAMSTEC award at the 'Ocean and fish, free research and work contest' goes on board this year.

In addition, proposals for deep-sea experiments using Hyper Dolphin were solicited from the public in advance, and the experiments recognized as excellent were implemented.

### 2-2 Duration :

Aug. 13, 2010 (Fly.) – Aug. 17, 2010 (Tue.)

For 5 days Experience embarkation

Group 1 : Aug 14, 2010 (Sat.)      Dive off the coast of Heda. (HPD#1170)

Group 2 : Aug 15, 2010 (Sun.)      Dive off the coast of Toi. (HPD#1171)

Group 3 : Aug 16, 2010 (Mon.)      Dive off the coast of Heda. (HPD#1172)

One unit consisted of one child and he/her guardian and total 14 units divided into 3 groups.

## 2-3 Implementation detail

The experiment embarkation was conducted by 3 groups.

All groups planned to embarkation from Shimizu Port in the morning, conducted a full-day deep sea exploration cruise including Hyper Dolphin's underwater exploration , and disembark at Shimizu Port in the evening.

Details are follows:

Group 1 (Aug. 14) , Group 2 (Aug 15) , Group 3 (Aug. 16)

1. Observation and sampling of the deep sea creatures by Hyper Dolphin.
2. The deep sea experiment which were recruited from the participants.
3. Observation of Hyper Dolphin's splashdown work and operation experience.
4. Observation of the creatures on the vessel.

The following was the payload which was mounted on the Hyper Dolphin.

- A set of experiment which sank the things (rubber ball, table tennis ball etc which were used for the experiment recruited from the children.)
- Niskin water sampler
- Slurp gun (multiple canister)
- Sample box (regular sample box, acrylic sample box)
- Various samplers (rake, colander, scoop, bowl)

## 2-4 Consideration

We changed the cruise place from last year's Sagami Bay to Suruga Bay and had a 3-day experience embarkation with 3 groups. Although there were differences in the diving areas, the basic content remained unchanged for all 3 days. On the final day, the third group had trouble with the Hyper Dolphin's hydraulic system, which cut down on their diving time by about two hours, but they were happy because they were able to have a different experience by operating the Natsushima.

We were able to set up a large area of Suruga Bay as a diving area to protect ourselves from the wind, and the weather was favorable, so there was almost no fear of seasickness among the trial participants, and the schedule went almost as planned. Although the content was different for each dive, we believe that the on-site explanations were able to capture the interest of the participants, and that they were able to fully experience the activities on the research vessel.

## 2-5 Acknowledgement

I would like to take this opportunity to express my heartfelt gratitude to visiting researchers Dr. Miyake and research student Ito who provided explanations on biological observations during Hyper Dolphin's dive and on board Natsushima.

Also I would like to express my gratitude special thanks to the all crews of 'Natsushima' including Captain Tanaka and all operation Team members of 'Hyper Dolphin' including the Operation Manager Mitsufuji, who were not only the operation but also paying the attention to the children and their guardians and setting up a complex payload.

## 3. Notice on Using

This cruise report is a preliminary documentation as of the end of cruise.

This report is not necessarily corrected even if there is any inaccurate description (i.e. taxonomic classifications). This report is subject to be revised without notice. Some data on this report may be raw or unprocessed. If you are going to use or refer the data on this report, it is recommended to ask the Chief Scientist for latest status.

Users of information on this report are requested to submit Publication Report to JAMSTEC.

<http://www.godac.jamstec.go.jp/darwin/explain/1/e#report>

E-mail: [submit-rv-cruise@jamstec.go.jp](mailto:submit-rv-cruise@jamstec.go.jp)