



## R/V Natsushima Cruise Report

NT11-01

Seismic survey and seismicity study  
off Shikoku island and Kii peninsula, Nankai trough

January 4 – 22, 2011

Japan Agency for Marine-Earth Science and Technology

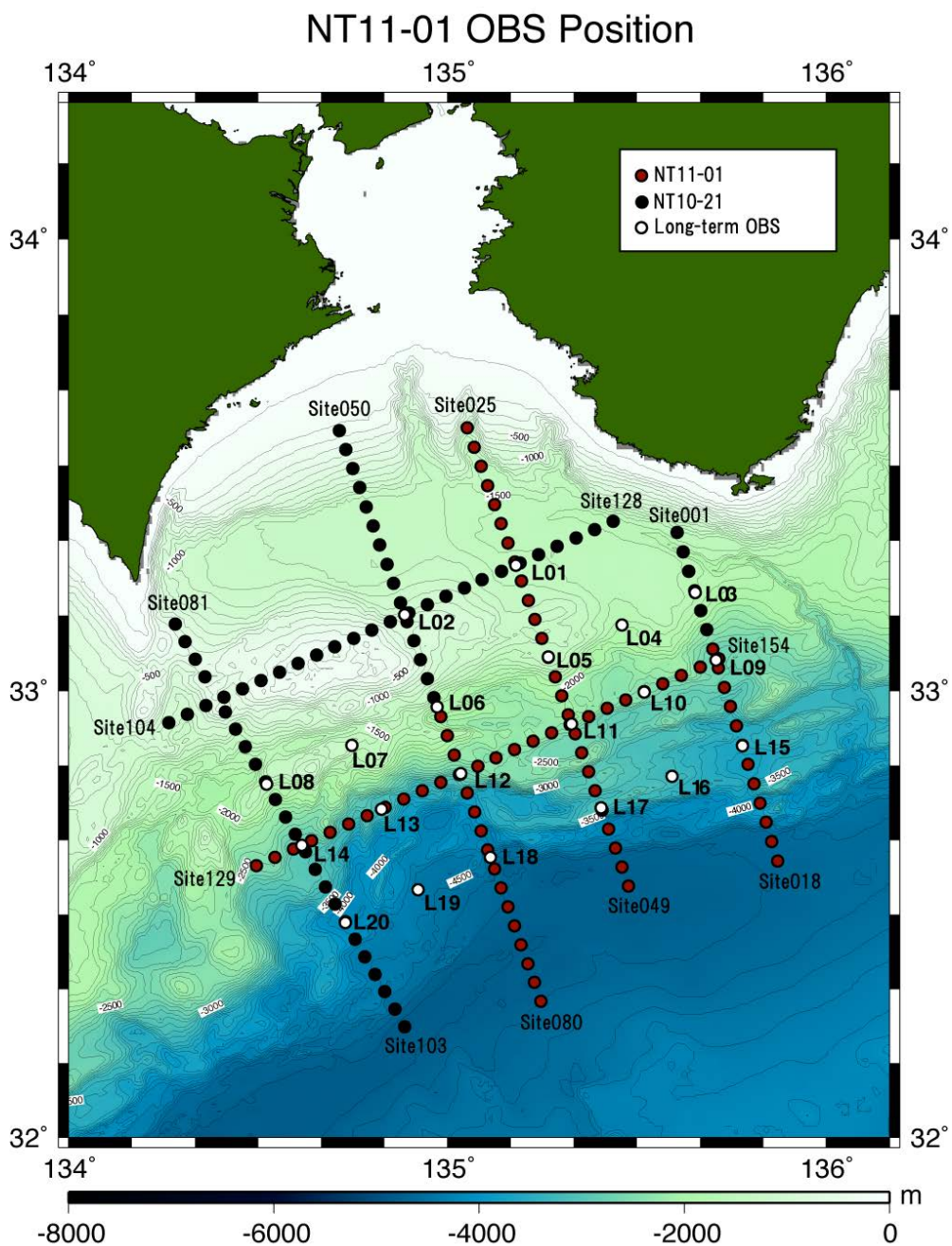
(JAMSTEC)

## Contents:

1. Cruise Information :
2. Researchers
3. Overview of Observation:
4. Notice on using:

1. Cruise Information :

- (1) Cruise number, Ship name: NT11-01, R/V Natsushima
- (2) Title of the cruise: 2010FY “Seismic survey and seismicity study off Shikoku island”
- (3) Chief Scientist [Affiliation]: Shin’ichiro Kamiya [JAMSTEC]
- (4) Representative of Science Party [Affiliation]: Yoshiyuki Kaneda [JAMSTEC],
- (5) Title of proposal:  
Research for Interaction between the Tokai, Tonankai and Nankai Earthquakes  
- Seismic survey and seismicity study off Shikoku island -
- (6) Cruise period, Port call: 2011/01/04-01/22, from JAMSTEC (Yokosuka) to JAMSTEC (Yokosuka)
- (7) Research Area: Off Shikoku island and Kii peninsula, Nankai trough
- (8) Research Area Map:



## 2. Researchers

(1) Chief Scientist [Affiliation]: Shin'ichiro Kamiya [JAMSTEC]

(2) Representative of Science Party [Affiliation]: Shuichi Kodaira [JAMSTEC],

(3) Science party list:

Kazuhiko Kashiwase [JAMSTEC]

Shuichi Kodaira [JAMSTEC]

Yoshiyuki Kaneda [JAMSTEC],

Gou Fujie [JAMSTEC],

Ayako Nakanishi [JAMSTEC],

Jin-Oh Park [JAMSTEC],

Tsutomu Takahashi [JAMSTEC],

Tetsuo No [JAMSTEC],

Kaoru Takizawa [JAMSTEC],

Yoshio Fukao [JAMSTEC],

### 3. Overview of Observation:

#### (1) Objectives:

This research cruise was conducted as a part of the study of “Research program concerning interaction between the Tokai, Tonankai, and Nankai Earthquakes” funded by the Ministry of Education, Culture, Sports, Science, and Technology of Japan. The objectives of this cruise to reveal seismic structure and seismic activity off Shikoku island and Kii peninsula, Nankai trough.

During the cruise of NT11-01, 79 ocean bottom seismographs (OBSs) have been recovered. These OBSs were deployed during the cruise of KR10-11\_Leg1 by R/V Kairei in October and November 2010.

#### (2) List of observation instruments:

##### 1) Ocean bottom seismograph (SPOBS)

During the cruise, 79 OBSs have been retrieved.

##### 2) Others

During the cruise, bathymetry data have been recorded continuously.

#### (3) Cruise log:

Date		Remarks
2011/01/04	Tue	Departure from JAMSTEC (Yokosuka). Transit to survey area
2011/01/05	Wed	Transit to survey area. OBS recovery
2011/01/06	Thu	OBS recovery
2011/01/07	Fri	OBS recovery
2011/01/08	Sat	OBS recovery
2011/01/09	Sun	OBS recovery
2011/01/10	Mon	OBS recovery
2011/01/11	Tue	OBS recovery
2011/01/12	Wed	OBS recovery
2011/01/13	Thu	OBS recovery
2011/01/14	Fri	OBS recovery
2011/01/15	Sat	Bathymetry survey off Muroto peninsula
2011/01/16	Sun	Bathymetry survey off Muroto peninsula
2011/01/17	Mon	Bathymetry survey off Muroto peninsula
2011/01/18	Tue	Bathymetry survey off Muroto peninsula
2011/01/19	Wed	Bathymetry survey off Muroto peninsula
2011/01/20	Thu	Bathymetry survey off Muroto peninsula
2011/01/21	Fri	Bathymetry survey off Muroto peninsula. Transit to JAMSTEC
2011/01/22	Sat	Arrive at JAMSTEC (Yokosuka)

(4) Research Information:

1) OBS Recovery

During the cruise, 79 ocean bottom seismographs (OBSs) have been recovered. These OBSs were deployed during the cruise of KR10-11\_Leg1 by R/V Kairei in October and November 2010.

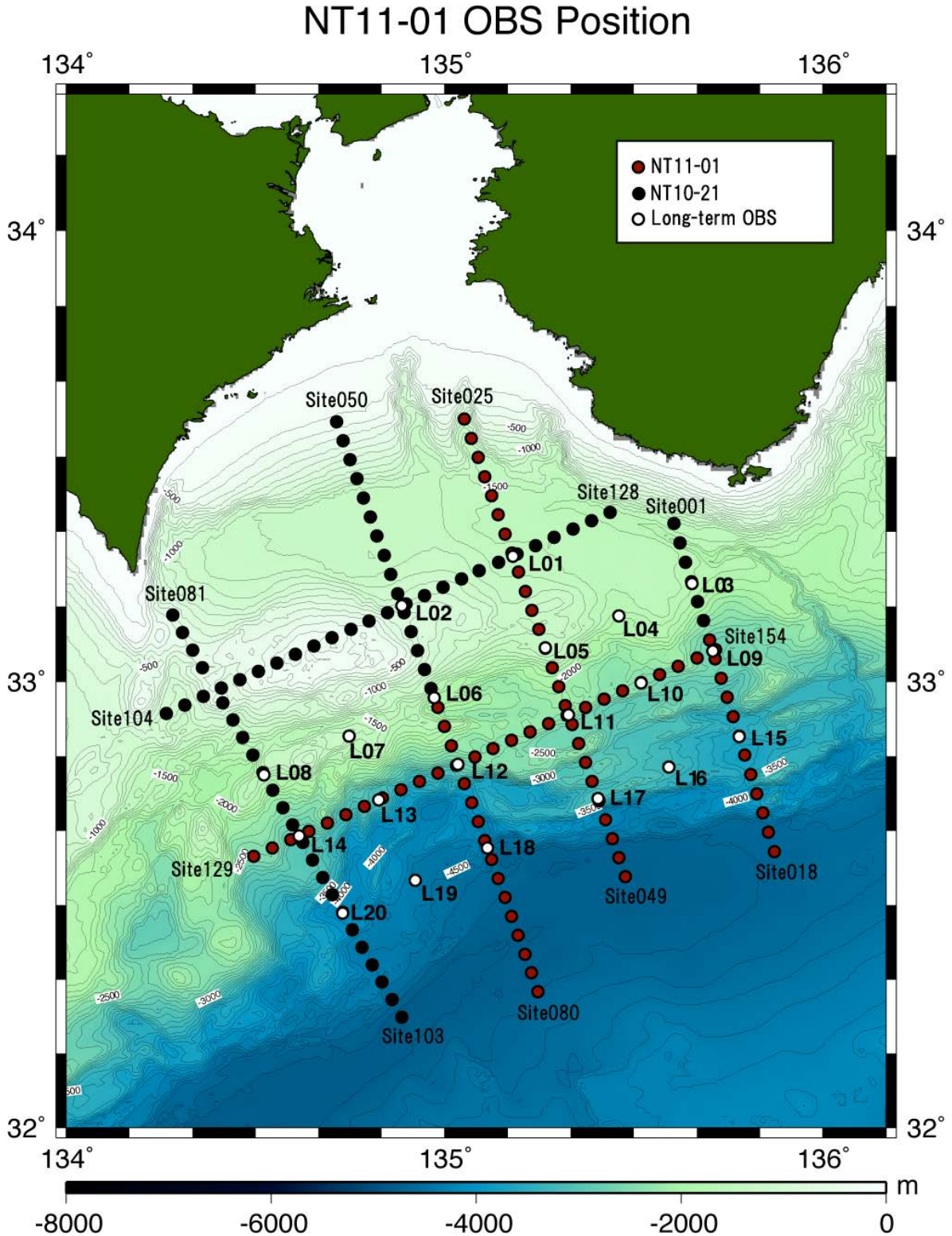


Fig.1 Map of the OBSs. Red and black circles are the OBSs recovered during the cruise NT11-01 and NT10-21, respectively. Open circles are long-term OBSs (unrecovered).



## 2) Bathymetry survey

Seafloor topography off Muroto peninsula has been surveyed by multi-beam echo sounder (MBES).

### NT11-01 Bathymetry survey

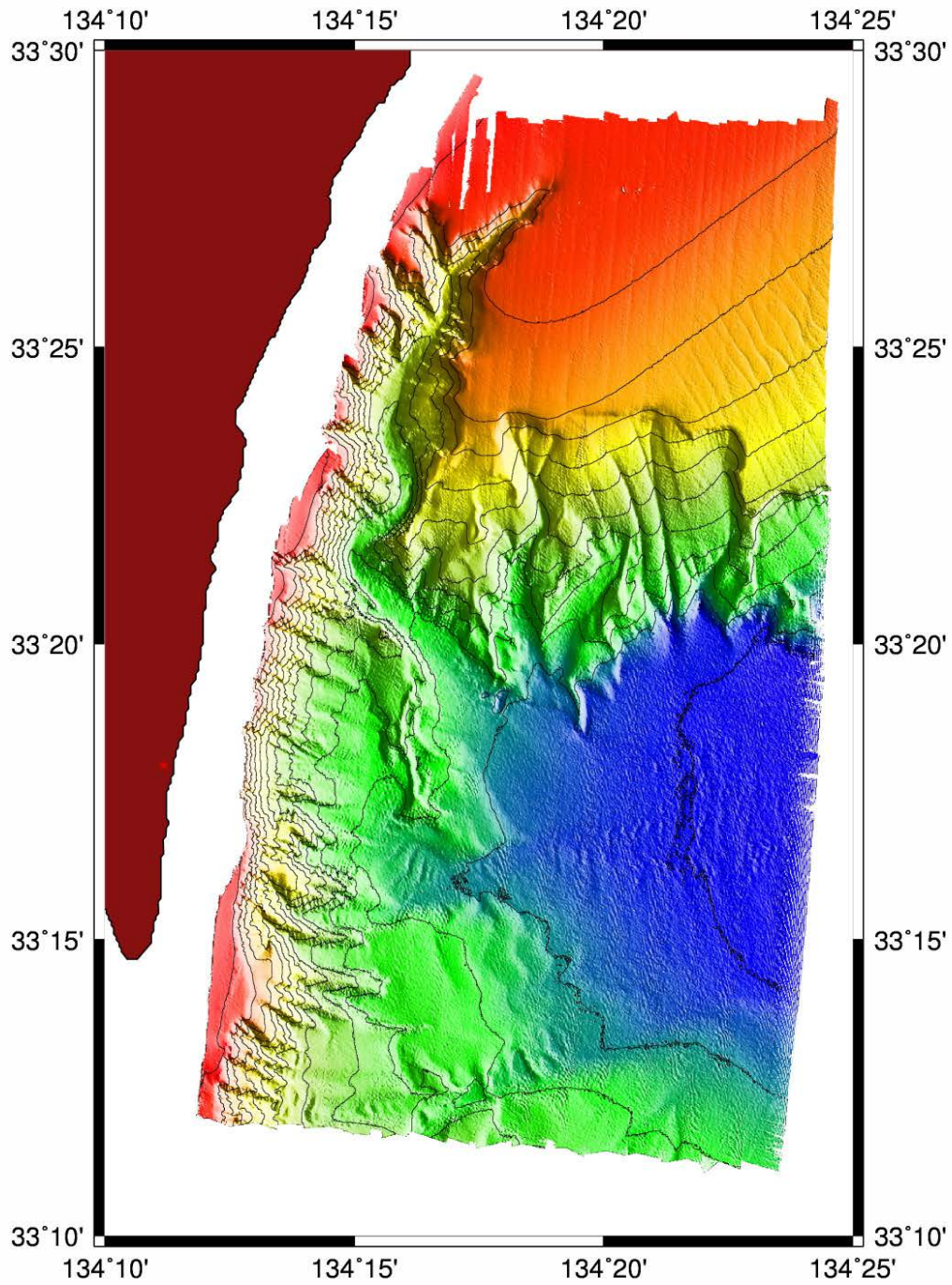


Fig.2 Map of the bathymetry survey area.

#### 4 . Notice on using:

This cruise report is a preliminary documentation as of the end of the cruise. It may not be corrected even if changes on content (i.e. taxonomic classifications) are found after publication. It may also be changed without notice. Data on the cruise report may be raw or not processed. Please ask the PI(s) for the latest information before using. Users of data or results of this cruise are requested to submit their results to Data Integration and Analysis Group (DIAG), JAMSTEC.