

MIRAI MR07-06 Leg1 Partial Pressure of CO₂ (pCO₂)

Last Modified: 2017-04-11

[ReadMe](#) [Observation Data](#) [Data Format](#)

Cruise ID: [MR07-06 Leg1](#)

Partial Pressure of CO₂ (pCO₂): Processed (PI)

Data Policy: [JAMSTEC](#)

Observation Items: CO₂, Air temperature, Atmospheric pressure, Wind direction, Wind speed, Sea surface temperature, Sea surface salinity

Science Keywords:

OCEANS > OCEAN CHEMISTRY > CARBON DIOXIDE

Cruise Report

http://www.godac.jamstec.go.jp/catalog/data/doc_catalog/media/MR07-06_leg1-2_all.pdf

For Using Data

Principal Investigator

Akihiko Murata (JAMSTEC)

Use Constraints

See [Terms and Conditions](#) about constrain of use.

Data Citation

See [Terms and Conditions](#) about data citation.

Instrument

Instrument:

pCO₂ measurement system (- MR10-06)



Overview

Please see the [Data book](#) for details of data.

Information on pCO₂ measurement

Investigator: Dr. Akihiko Murata

Organization: Research Institute for Global Change (RIGC)/Japan Agency for Marine-Earth Science and Technology (JAMSTEC)

Address: 2-15, Natsushima-cho, Yokosuka, Kanagawa, 237-0061, Japan

Vessel:

Vessel Name: Mirai

Vessel ID: JNSR

Country: Japan

Vessel Owner: JAMSTEC

Equilibrator Design:

Equilibrator type: Shower-head type equilibrator

Equilibrator volume (L): 1.2

Water_Flow_Rate (L/min): 5-8

Headspace_Gas_Flow_Rate (L/min): 0.6-0.8

Vented: During equilibrium, closed circulation of air. When measured by NDIR, vented to ambient air.

Measurement Method:

Continuous underway measurements of atmospheric and surface seawater pCO₂ were made with the CO₂ measuring system (Nippon ANS, Ltd) installed in the R/V Mirai of JAMSTEC. The system comprises of a non-dispersive infrared gas analyzer (NDIR; BINOSR model 4.1, Fisher-Rosemount) or the variations, an air-circulation module and a showerhead-type equilibrator. To measure concentrations (mole fraction) of CO₂ in dry air (xCO_{2a}), air sampled from the bow of the ship (approx. 30 m above the sea level) was introduced into the NDIR through a dehydrating route with an electric dehumidifier (kept at ~ 2 °C), a Perma Pure dryer (GL Sciences Inc.), and a chemical desiccant (Mg(ClO₄)₂). The flow rate of the air was 500 ml min⁻¹. To measure surface seawater concentrations of CO₂ in dry air (xCO_{2s}), the air equilibrated with seawater within the equilibrator was introduced into the NDIR through the same flow route as the dehydrated air used in measuring xCO_{2a}. The flow rate of the equilibrated air was 600 - 800 ml min⁻¹. The seawater was taken by a pump from the intake placed at the approx. 4.5 m below the sea surface. The flow rate of seawater in the equilibrator was 500 - 800 ml min⁻¹.

The CO₂ measuring system was set to repeat the measurement cycle such as 4 kinds of CO₂ standard gases (Table 1), xCO_{2a} (twice), xCO_{2s} (7 times). This measuring system was run automatically throughout cruises by a PC control. Effects of water temperature increased between the inlet of surface seawater and the equilibrator on xCO_{2s} were adjusted based on Gordon and Jones (1973), although the temperature increases were slight, being ~ 0.5 °C at maximum.

Gordon, L. I. and L. B. Jones (1973), The effect of temperature on carbon dioxide partial pressure in seawater. Mar. Chem., 1, 317 - 322.

Manufacturer of Calibration Gas:

Concentrations of CO₂ of the standard gases are listed in Table 1, which were calibrated by the JAMSTEC primary standard gases after 2000 (MR00-K01 and later). Before that time, the standard gases were calibrated against the scale of the Meteorological Research Institute, Tsukuba, Japan, and fitted to the 1985 World Meteorological Organization scale by using the equation of Inoue et al. (1995). The CO₂ concentrations of the primary standard gases were calibrated by C. D. Keeling of the Scripps Institution of Oceanography, La Jolla, CA, USA. The values are 230.33 ppm (Cyl. No. 11325),

259.74 (11326), 279.67 (11327), 308.93 (11328), 328.25 (11329), 348.79 (11330), 369.55 (11331), 389.54 (11333), 411.60 (11334), 440.94 (11335), 460.42 (11336), and 478.54 (11337).

Since differences of concentrations of the standard gases between before and after the cruise were all allowable (< 0.1 ppmv), the averaged concentrations (Table 1) were adopted for the subsequent calculations.

Table 1. Concentrations of standard gases used in individual cruises.

Cruise #	STD1	STD2	STD3	STD4	Remark
MR98-06	-	-	-	-	No records left
MR98-K01	270.28	330.95	360.48	410.85	
MR99-K02	270.28	330.95	360.48	410.85	
MR99-K04	270.26	330.98	360.43	410.85	
MR99-K05	247.74	304.98	333.32	382.57	
MR00-K01	329.71	359.17	409.39	439.94	
MR00-K03	269.60	329.71	359.17	439.94	
	269.60	329.71	359.17	409.39	
MR00-K06	246.95	305.13	333.44	382.74	
	305.13	333.44	382.74	409.40	
MR01-K02	269.60	329.74	359.22	409.39	
MR01-K03	269.60	329.74	359.22	409.39	
MR01-K04 Leg1	298.56	321.17	370.75	439.95	
MR01-K04 Leg2	298.56	321.17	370.75	439.95	
MR01-K05 Leg1-2	247.99	298.56	321.17	370.75	
MR01-K05 Leg3-4	247.99	298.56	321.17	370.75	
MR02-K03	269.20	329.52	359.11	408.76	
MR02-K05 Leg1	246.69	297.83	320.05	391.66	
MR03-K01	270.16	340.21	371.39	389.97	
MR03-K02	270.08	328.87	359.10	409.23	
MR03-K04 Leg1	270.08	328.87	359.10	409.23	
MR03-K04 Leg2	270.08	328.87	359.10	409.23	
MR03-K04 Leg4	270.08	328.87	359.10	409.23	
MR03-K04 Leg5	268.84	330.16	369.37	414.39	
MR04-04	268.85	328.87	369.39	414.43	
MR04-05	268.84	330.16	369.37	414.39	
MR05-02	262.94	320.42	381.04	420.76	
MR05-05 Leg1	262.94	320.42	381.04	420.76	
MR05-05 Leg2	262.94	320.42	381.04	420.76	
MR05-05 Leg3	262.94	320.42	381.04	420.76	
MR06-04 Leg1	289.76	349.00	393.75	439.72	
MR06-04 Leg2	289.76	349.00	393.75	439.72	
MR07-04	289.77	349.02	393.77	439.75	
MR07-05	289.77	349.02	393.77	439.75	
MR07-06 Leg1	270.02	330.40	369.28	419.68	
MR07-06 Leg2	270.02	330.40	369.28	419.68	
MR09-01 Leg1	270.22	330.43	360.04	420.32	
MR09-01 Leg2	270.22	330.43	360.04	420.32	

Inoue, H. Y., H. Matsueda, M. Ishii, K. Fushimi, M. Hirota, I. Asanuma, and Y. Takasugi (1995), Long-term trend of the partial pressure of carbon dioxide (pCO₂) in surface waters of the western North Pacific 1984 - 1993. Tellus 47B, 391 - 413.

CO₂ Sensors:

Manufacturer: Rosemount Analytical
Model: BINOS 4.1
Resolution: -
Uncertainty: -

Related Information



MIRAI MR07-06 Leg1 Cruise Track

MR07-06 Leg1
Ship Name: MIRAI
Period: 2007-10-07 - 2007-11-20
Chief Scientist: Takeshi Kawano (JAMSTEC)
Project Name: [POST-WOCE Hydrography, Station K2, Station KNOT]

 [Enlarge Image](#)

Update History

2017-04-11	An observation data was registerd.
2012-10-26	An observation data was registerd.

JAMSTEC
Site Policy
Privacy Policy
Application for Data and Samples
Data Policy

What's New
Update History
Feeds

Lists
Publication List
Amount of Public Info.

Data
Map Search
Data Tree
Detailed Search

Information of the Ships
NATSUSHIMA
KAIYO
YOKOSUKA
MIRAI
KAIREI
CHIKYU
KAIMEI
SHINSEI MARU
HAKUHO MARU

Information of the Submersibles
KAIKO
SHINKAI 2000
SHINKAI 6500
DEEP TOW
HYPER-DOLPHIN
URASHIMA
YOKOSUKA DEEP TOW
6K Camera DEEP TOW
6K Sonar DEEP TOW
KM-ROV
POWER GRAB SAMPLER (SHELL)
POWER GRAB SAMPLER (CLOW)
BMS

Go to a Cruise Information

Cruise ID:

Go to a Dive Information

Dive ID:

Copyright 2011 Japan Agency for Marine-Earth Science and Technology



JAMSTEC
JAPAN AGENCY FOR MARINE-EARTH SCIENCE AND TECHNOLOGY

国立研究開発法人
海洋研究開発機構

MIRAI MR07-06 Leg1 Partial Pressure of CO2 (pCO2)

Last Modified: 2017-04-11

[ReadMe](#) [Observation Data](#) [Data Format](#)

Cruise ID: [MR07-06 Leg1](#)

Partial Pressure of CO2 (pCO2) Processed (PI)

Data Policy: [JAMSTEC](#)

pCO2 FORMAT_J

Air-xCO₂

The file is in fixed length, comma separated text file (csv) format.

The "missing value" is defined as -999.

Column NO.	Column Heading	Comments
1	Date	Year/Month/Day (YYYY/MM/DD) in UTC
2	Time	Hour:Minute:Second (HH:MM:SS) in UTC
3	Latitude	Latitude (degree) ; Positive in north
4	Longitude	Longitude (degree) ; degree in eastward (0 - 360)
5	Atm_Tmp	Air temperature (degree C)
6	Atm_Prs	Barometric pressure (hPa)
7	Wind_Dir	Wind direction (degree)
8	Wind_Spd	Wind speed (m/s)
9	SST	Sea surface temperature (degree C)
10	SSS	Sea surface salinity (PSU)
11	xCO2_Air	CO ₂ mixing ratio (ppmv) in the 'dry air' taken from the fore-mast of the ship.

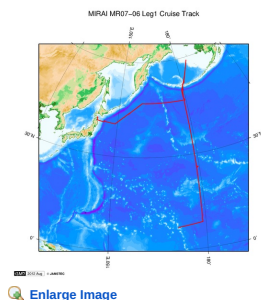
Sea-xCO₂

The file is in fixed length, comma separated text file (csv) format.

The "missing value" is defined as -999.

Column NO.	Column Heading	Comments
1	Date	Year/Month/Day (YYYY/MM/DD) in UTC
2	Time	Hour:Minute:Second (HH:MM:SS) in UTC
3	Latitude	Latitude (degree) ; Positive in north
4	Longitude	Longitude (degree) ; degree in eastward (0 - 360)
5	Eq_Tmp	Temperature in equilibrator (degree C)
6	Eq_Prs	Pressure in equilibrator (mmHg)
7	SST	Sea surface temperature (degree C)
8	Atm_Prs	Air pressure (hPa)
9	SSS	Sea surface salinity (PSU)
10	xCO2_Sea	CO ₂ mixing ratio (ppmv) in the 'dry air' equilibrated with surface.

Related Information



MR07-06 Leg1

Ship Name: MIRAI

Period: 2007-10-07 - 2007-11-20

Chief Scientist: Takeshi Kawano (JAMSTEC)

Project Name: [POST-WOCE Hydrography, Station K2, Station KNOT]

Update History

2017-04-11 An observation data was registered.
2012-10-26 An observation data was registered.

JAMSTEC
Site Policy
Privacy Policy
Application for Data and Samples
Data Policy
What's New
Update History
Feeds

Lists
Publication List
Amount of Public Info.
Data
Map Search
Data Tree
Detailed Search

Information of the Ships
NATSUSHIMA
KAIYO
YOKOSUKA
MIRAI
KAIREI
CHIKYU
KAIMEI
SHINSEI MARU
HAKUHO MARU

Information of the Submersibles
KAIKO
SHINKAI 2000
SHINKAI 6500
DEEP TOW
HYPER-DOLPHIN
URASHIMA
YOKOSUKA DEEP TOW
6K Camera DEEP TOW
6K Sonar DEEP TOW
KM-ROV
POWER GRAB
SAMPLER (SHELL)
POWER GRAB
SAMPLER (CLOW)
BMS

Go to a Cruise Information

Cruise ID:

Go to a Dive Information

Dive ID:

MIRAI MR07-06 Leg1 Partial Pressure of CO2 (pCO2)

Last Modified: 2017-04-11

[ReadMe](#) [Observation Data](#) [Data Format](#)

Cruise ID: [MR07-06 Leg1](#)

Partial Pressure of CO2 (pCO2): Processed (PI)

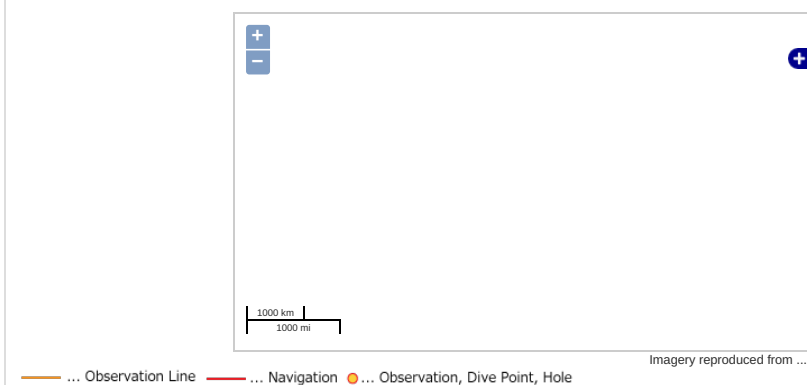
Data Policy: [JAMSTEC](#)

Observation Items: CO2, Air temperature, Atmospheric pressure, Wind direction, Wind speed, Sea surface temperature, Sea surface salinity

Science Keywords:

OCEANS > OCEAN CHEMISTRY > CARBON DIOXIDE

Observation Map

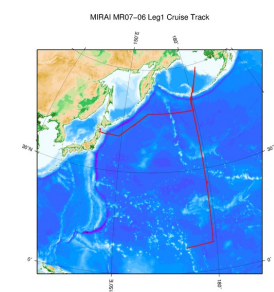


Data List

File names

☐ MR07-06_leg1_pco2.zip

Related Information



[Enlarge Image](#)

MR07-06 Leg1

Ship Name: MIRAI

Period: 2007-10-07 - 2007-11-20

Chief Scientist: Takeshi Kawano (JAMSTEC)

Project Name: [POST-WOCE Hydrography, Station K2, Station KNOT]

Update History

2017-04-11	An observation data was registered.
2012-10-26	An observation data was registered.

JAMSTEC

[Site Policy](#)
[Privacy Policy](#)
[Application for Data and Samples](#)
[Data Policy](#)

[What's New](#)
[Update History](#)
[Feeds](#)

Lists

[Publication List](#)
[Amount of Public Info.](#)

[Data](#)
[Map Search](#)
[Data Tree](#)
[Detailed Search](#)

Information of the Ships

[NATSUSHIMA](#)
[KAIYO](#)
[YOKOSUKA](#)
[MIRAI](#)
[KAIREI](#)
[CHIKYU](#)
[KAIMEI](#)
[SHINSEI MARU](#)
[HAKUHO MARU](#)

Information of the Submersibles

[KAIKO](#)
[SHINKAI 2000](#)
[SHINKAI 6500](#)
[DEEP TOW](#)
[HYPER-DOLPHIN](#)
[URASHIMA](#)
[YOKOSUKA DEEP TOW](#)
[6K Camera DEEP TOW](#)
[6K Sonar DEEP TOW](#)
[KM-ROV](#)
[POWER GRAB SAMPLER \(SHELL\)](#)
[POWER GRAB SAMPLER \(CLOW\)](#)
[BMS](#)

Go to a Cruise Information

Cruise ID:

Go to a Dive Information

Dive ID: