

## MIRAI MR09-01 Leg1 Bathymetry (MBES)

Last Modified: 2017-04-11

[ReadMe](#)

[Observation  
Data](#)

Cruise ID: [MR09-01 Leg1](#)

Bathymetry (MBES): Processed (PI)

Data Policy: [JAMSTEC](#)

Observation Items: Depth

Science Keywords:

OCEANS > BATHYMETRY/SEAFLOOR TOPOGRAPHY > BATHYMETRY  
SOLID EARTH > GEOMORPHOLOGY

Cruise Report

[http://www.godac.jamstec.go.jp/catalog/data/doc\\_catalog/media/MR09-01\\_leg1-3\\_all.pdf](http://www.godac.jamstec.go.jp/catalog/data/doc_catalog/media/MR09-01_leg1-3_all.pdf)

### [For Using Data](#)

#### Principal Investigator

Takeshi Matsumoto (University of the Ryukyus)  
Masao Nakanishi (Chiba University)

#### Use Constraints

See [Terms and Conditions](#) about constrain of use.

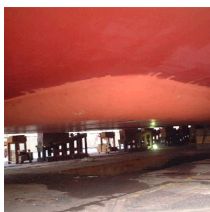
#### Data Citation

See [Terms and Conditions](#) about data citation.

### Instrument

Instrument:

Multi-narrow beam echo sounder ( -  
MR12-E01)



### Overview

Please see the [Data book](#) for details of data.

1. Gridded bathymetry data

MR0901L1\_\*\_Interp.grd

MR0901L2\_\*\_Interp.grd

netCDF formats (see Section 2.1 for more detail)

2. Along track bathymetry data

track\_p21.dat

File format:

Column 1: Distance (km)  
Column 2: Latitude (deg)  
Column 3: Longitude (deg)  
Column 4: Depth (m)

3. CTD station location data

dist\_p21.dat

File format:

Column 1: Distance (km)  
Column 2: Latitude (deg)  
Column 3: Longitude (deg)  
Column 4: Station number (WHPID\_STNNBR\_CASTNO)

4. Contact

Hiroshi Uchida (JAMSTEC)  
huchida@jamstec.go.jp

### Related Information

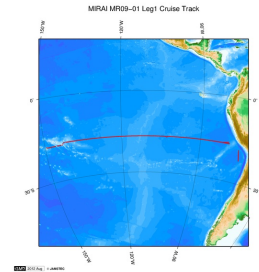
#### MR09-01 Leg1

Ship Name: MIRAI

Period: 2009-04-10 - 2009-05-19

Chief Scientist: Akihiko Murata (JAMSTEC)

Project Name: [POST-WOCE Hydrography, South Pacific Ocean Research Activity 2009]



[Enlarge Image](#)

#### Update History

2017-04-11	An observation data was registerd.
2012-09-28	An observation data was registerd.

#### JAMSTEC

[Site Policy](#)  
[Privacy Policy](#)  
[Application for Data and Samples](#)  
[Data Policy](#)

[What's New](#)  
[Update History](#)  
[Feeds](#)

#### Lists

[Publication List](#)  
[Amount of Public Info.](#)

#### Data

[Map Search](#)  
[Data Tree](#)  
[Detailed Search](#)

#### Information of the Ships

[NATSUSHIMA](#)  
[KAIYO](#)  
[YOKOSUKA](#)  
[MIRAI](#)  
[KAIREI](#)  
[CHIKYU](#)  
[KAIMEI](#)  
[SHINSEI MARU](#)  
[HAKUHO MARU](#)

#### Information of the Submersibles

[KAIKO](#)  
[SHINKAI 2000](#)  
[SHINKAI 6500](#)  
[DEEP TOW](#)  
[HYPER-DOLPHIN](#)  
[URASHIMA](#)  
[YOKOSUKA DEEP TOW](#)  
[6K Camera DEEP TOW](#)  
[6K Sonar DEEP TOW](#)  
[KM-ROV](#)  
[POWER GRAB](#)  
[SAMPLER \(SHELL\)](#)  
[POWER GRAB](#)  
[SAMPLER \(CLOW\)](#)  
[BMS](#)

#### Go to a Cruise Information

Cruise ID:

#### Go to a Dive Information

Dive ID:

Copyright 2011 Japan Agency for Marine-Earth Science and Technology



**JAMSTEC** 国立研究開発法人  
海洋研究開発機構  
JAPAN AGENCY FOR MARINE-EARTH SCIENCE AND TECHNOLOGY

## MIRAI MR09-01 Leg1 Bathymetry (MBES)

Last Modified: 2017-04-11

[ReadMe](#) [Observation Data](#)

Cruise ID: [MR09-01 Leg1](#)

Bathymetry (MBES): Processed (PI)

Data Policy: [JAMSTEC](#)

Observation Items: Depth

Science Keywords:

OCEANS > BATHYMETRY/SEAFLOOR TOPOGRAPHY > BATHYMETRY  
SOLID EARTH > GEOMORPHOLOGY

Cruise Report

[http://www.godac.jamstec.go.jp/catalog/data/doc\\_catalog/media/MR09-01\\_leg1-3\\_all.pdf](http://www.godac.jamstec.go.jp/catalog/data/doc_catalog/media/MR09-01_leg1-3_all.pdf)

### For Using Data

#### Principal Investigator

Takeshi Matsumoto (University of the Ryukyus)  
Masao Nakanishi (Chiba University)

#### Use Constraints

See [Terms and Conditions](#) about constrain of use.

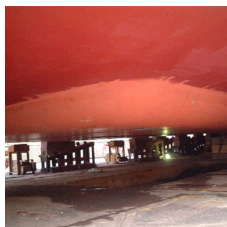
#### Data Citation

See [Terms and Conditions](#) about data citation.

### Instrument

Instrument:

Multi-narrow beam echo sounder ( -  
MR12-E01)



### Overview

Please see the [Data book](#) for details of data.

1. Gridded bathymetry data

MR0901L1\_\*.Interp.grd

MR0901L2\_\*.Interp.grd

netCDF formats (see Section 2.1 for more detail)

2. Along track bathymetry data

track\_p21.dat

File format:

Column 1: Distance (km)  
Column 2: Latitude (deg)  
Column 3: Longitude (deg)  
Column 4: Depth (m)

3. CTD station location data

dist\_p21.dat

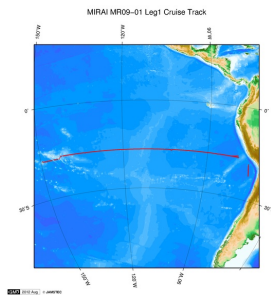
File format:

Column 1: Distance (km)  
Column 2: Latitude (deg)  
Column 3: Longitude (deg)  
Column 4: Station number (WHPID\_STNNBR\_CASTNO)

4. Contact

Hiroshi Uchida (JAMSTEC)  
huchida@jamstec.go.jp

### Related Information



 [Enlarge Image](#)

#### MR09-01 Leg1

Ship Name: MIRAI

Period: 2009-04-10 - 2009-05-19

Chief Scientist: Akihiko Murata (JAMSTEC)

Project Name: [POST-WOCE Hydrography, South Pacific Ocean Research Activity 2009]

#### Update History

2017-04-11	An observation data was registerd.
2012-09-28	An observation data was registerd.

#### JAMSTEC

[Site Policy](#)

[Privacy Policy](#)

[Application for Data and Samples](#)

[Data Policy](#)

#### What's New

[Update History](#)

[Feeds](#)

#### Lists

[Publication List](#)

[Amount of Public Info.](#)

#### Data

[Map Search](#)

[Data Tree](#)

[Detailed Search](#)

#### Information of the Ships

[NATSUSHIMA](#)

[KAIYO](#)

[YOKOSUKA](#)

[MIRAI](#)

[KAIREI](#)

[CHIKYU](#)

[KAIMEI](#)

[SHINSEI MARU](#)

[HAKUHO MARU](#)

#### Information of the Submersibles

[KAIKO](#)

[SHINKAI 2000](#)

[SHINKAI 6500](#)

[DEEP TOW](#)

[HYPER-DOLPHIN](#)

[URASHIMA](#)

[YOKOSUKA DEEP TOW](#)

[6K Camera DEEP TOW](#)

[6K Sonar DEEP TOW](#)

[KM-ROV](#)

[POWER GRAB SAMPLER \(SHELL\)](#)

[POWER GRAB SAMPLER \(CLOW\)](#)

[BMS](#)

#### Go to a Cruise Information

Cruise ID:

#### Go to a Dive Information

Dive ID:

Copyright 2011 Japan Agency for Marine-Earth Science and Technology



**JAMSTEC**

国立研究開発法人  
海洋研究開発機構  
JAPAN AGENCY FOR MARINE-EARTH SCIENCE AND TECHNOLOGY

## MIRAI MR09-01 Leg1 Bathymetry (MBES)

Last Modified: 2017-04-11

[ReadMe](#) [Observation Data](#)

Cruise ID: **MR09-01 Leg1**

Bathymetry (MBES): Processed (PI)

Data Policy: **JAMSTEC**

Observation Items: Depth

Science Keywords:

OCEANS > BATHYMETRY/SEAFLOOR > BATHYMETRY  
TOPOGRAPHY  
SOLID EARTH > GEOMORPHOLOGY

### Observation Map



Imagery reproduced from ...

... Observation Line    ... Navigation    ... Observation, Dive Point, Hole

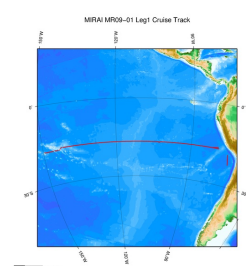
### Data List

[Add to Basket](#)

#### File names

☐ MR09-01\_leg1\_bathymetry.zip

### Related Information



[Enlarge Image](#)

#### MR09-01 Leg1

Ship Name: MIRAI

Period: 2009-04-10 - 2009-05-19

Chief Scientist: Akihiko Murata (JAMSTEC)

Project Name: [POST-WOCE Hydrography, South Pacific Ocean Research Activity 2009]

### Update History

2017-04-11	An observation data was registered.
2012-09-28	An observation data was registered.

#### JAMSTEC

[Site Policy](#)

[Privacy Policy](#)

[Application for Data and Samples](#)

[Data Policy](#)

[What's New](#)

[Update History](#)

[Feeds](#)

#### Lists

[Publication List](#)

[Amount of Public Info.](#)

#### Data

[Map Search](#)

[Data Tree](#)

[Detailed Search](#)

#### Information of the Ships

[NATSUSHIMA](#)

[KAIYO](#)

[YOKOSUKA](#)

[MIRAI](#)

[KAIREI](#)

[CHIKYU](#)

[KAIMEI](#)

[SHINSEI MARU](#)

[HAKUHO MARU](#)

#### Information of the Submersibles

[KAIKO](#)

[SHINKAI 2000](#)

[SHINKAI 6500](#)

[DEEP TOW](#)

[HYPER-DOLPHIN](#)

[URASHIMA](#)

[YOKOSUKA DEEP TOW](#)

[6K Camera DEEP TOW](#)

[6K Sonar DEEP TOW](#)

[KM-ROV](#)

[POWER GRAB SAMPLER \(SHELL\)](#)

[POWER GRAB SAMPLER \(CLOW\)](#)

[BMS](#)

#### Go to a Cruise Information

Cruise ID:

#### Go to a Dive Information

Dive ID:

