

## KAIYO KY08-09 Conductivity-Temperature-Depth Profiler (CTD)

Last Modified: 2017-06-22

[ReadMe](#) [Observation Data](#) [Data Format](#)

Cruise ID: [KY08-09](#)

Conductivity-Temperature-Depth Profiler (CTD) Processed (DMO)-QCed

Data Policy: [JAMSTEC](#)

Observation Items: Pressure, Temperature, Salinity, Dissolved oxygen

Science Keywords:

OCEANS > OCEAN CHEMISTRY > OXYGEN  
OCEANS > OCEAN TEMPERATURE > WATER TEMPERATURE  
OCEANS > SALINITY/DENSITY > SALINITY

Cruise Report

[http://www.godac.jamstec.go.jp/catalog/data/doc\\_catalog/media/KY08-09\\_all.pdf](http://www.godac.jamstec.go.jp/catalog/data/doc_catalog/media/KY08-09_all.pdf)

### **i** For Using Data

#### Principal Investigator

Data Management Office

#### Use Constraints

See [Terms and Conditions](#) about constrain of use.

#### Data Citation

See [Terms and Conditions](#) about data citation.

### Overview

CTD(Conductivity-Temperature-Depth profiler) is used to observe the vertical profiles of temperature and conductivity.

Usually, this system is operated with multicylinder water sampler.

Observed signal is transmitted from sensor to the operation room on board using wire cable, and electric power is supplied from vessel to sensor.

Details of sensors attached to CTD system for KY08-09 cruise are presented in "System".

The following software, developed and supplied by the Sea-Bird Electronics, Inc., was used in KY08-09.

Seasave-Win32(ver 7.17a) for data acquisition

SBEDataProcessing-Win32(ver 7.17a) for data processing

Data presented on this website is averaged over 1db.

### System

#### • Pressure sensor

Model : SBE9plus, Sea-Bird Electronics,Inc.

Serial number : 94766

Measurement range : up to 6800m

Accuracy : 0.015% F.S.

Resolution : 0.001% F.S.

#### • Temperature sensor

Model : SBE3, Sea-Bird Electronics,Inc.

Serial number : 034418

Measurement range : -5.0 to +35degC

Accuracy : 0.001degC

Resolution : 0.0002degC

#### • Salinity sensor

Model : SBE4, Sea-Bird Electronics,Inc.

Serial number : 043063

Measurement range : 0.0 to 7 S/m

Accuracy : 0.0003 S/m

Resolution : 0.00004 S/m

Sensors used in each cast is as follows.

Cast name	Serial number of sensor			
	Pressure	Temperature	Salinity	Dissolved Oxygen
N08_01	94766	034418	043063	-
JKEO01	94766	034418	043063	-
W08_01	94766	034418	043063	-

### Calibration Information

Calibration Information is as follows.

[Calibration Information](#)

### Data processing

(1) Data processing sequence for SEASOFT is as follows;

command	function
datcnv	Convert raw data to engineering units, and store converted data in file.
wildedit	Mark a data value with badflag to eliminate wild points.
celltm	Perform conductivity thermal mass correction.
filter	Low-pass filter columns of data.
section	Extract rows of data from file.
loopedit	Mark a scan with badflag if scan fails pressure reversal or minimum velocity tests.
binavg	Average data, basing bins on pressure, depth, scan number, or time range.
derive	Calculate salinity, density, etc..
split	Split data in file into upcast and downcast files.

(2) Quality control

QCed data were added flag according to the NODC (National Oceanographic Data Center) quality control procedure.

- 1) The gradient check of adjacent depth data
- 2) The density inversion check
- 3) The broad range check set up at given ocean space and depth

Please see the site of NODC of the following link for quality control procedure in detail.

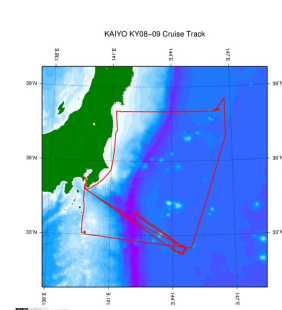
#### [QUALITY CONTROL AND PROCESSING OF HISTORICAL OCEANOGRAPHIC TEMPERATURE, SALINITY, AND OXYGEN DATA](#)

In addition, an abnormal value is identified by a visual check, and the data after visual QC is released.

#### Note

- (1) In this cruise, there is extra data (distance to bottom) in additional to temperature, salinity, dissolved oxygen that has been opened to the public. Please contact us from "Contact Us" above if necessary.

#### Related Information



[Enlarge Image](#)

#### KY08-09

Ship Name: KAIYO  
Period: 2008-09-02 - 2008-09-17  
Chief Scientist: Hiroshi Ichikawa (JAMSTEC)  
Project Name: [Station KEO]  
Proposal: Kuroshio Transport and Surface Flux Observation Study  
Title:

#### Update History

2017-06-22	An observation data was registerd.
2014-10-02	An observation data was registerd.
2014-02-06	An observation data was registerd.
2013-03-22	An observation data was registerd.
2012-10-27	An observation data was registerd.

#### JAMSTEC

[Site Policy](#)  
[Privacy Policy](#)  
[Application for Data and Samples](#)  
[Data Policy](#)  
  
[What's New](#)  
[Update History](#)  
[Feeds](#)

#### Lists

[Publication List](#)  
[Amount of Public Info.](#)  
  
[Data](#)  
[Map Search](#)  
[Data Tree](#)  
[Detailed Search](#)

#### Information of the Ships

NATSUSHIMA  
KAIYO  
YOKOSUKA  
MIRAI  
KAIREI  
CHIKYU  
KAIMEI  
SHINSEI MARU  
HAKUHO MARU

#### Information of the Submersibles

KAIKO  
SHINKAI 2000  
SHINKAI 6500  
DEEP TOW  
HYPER-DOLPHIN  
URASHIMA  
YOKOSUKA DEEP TOW  
6K Camera DEEP TOW  
6K Sonar DEEP TOW  
KM-ROV  
POWER GRAB SAMPLER (SHELL)  
POWER GRAB SAMPLER (CLOW)  
BMS

#### Go to a Cruise Information

Cruise ID:

#### Go to a Dive Information

Dive ID:

Copyright 2011 Japan Agency for Marine-Earth Science and Technology



**JAMSTEC** 国立研究開発法人  
海洋研究開発機構  
JAPAN AGENCY FOR MARINE-EARTH SCIENCE AND TECHNOLOGY

## KAIYO KY08-09 Conductivity-Temperature-Depth Profiler (CTD)

Last Modified: 2017-06-22

[ReadMe](#)   [Observation Data](#)   [Data Format](#)

 Cruise ID: [KY08-09](#)

Conductivity-Temperature-Depth Profiler (CTD): Processed (DMO)-QCed

 Data Policy: [JAMSTEC](#)

### CTD DMO

#### Format Description for the Corrected Data

Provided in the Exchange Format of CCHDO (CLIVAR and Carbon Hydrographic Data Office). Please see the following link for details of Exchange Format.

[CCHDO | CLIVAR & Carbon Hydrographic Data Office](#)

Data in following cruise is not expressed with Exchange Format. Please see the site of each cruise for format.

MR02-K05 Leg1

MR04-05

#### Format Description for the QCed Data

Each data file contains one line header (meta data) followed by data lines for each cast.

The number of data lines are recorded in the header.

Header part

No.	Column	Content	Format	Remarks
1	1	Header ID	a1	fixed as '#'
2	3 - 6	Data ID	a4	CTD
3	8 - 22	Cruise ID	a15	MYYY-(K)XX(_legx)
4	24 - 31	Cast name	a8	
5	33 - 40	Date	i8	YYYYMMDD (UTC)
6	42 - 45	Time	i4	hhmm (UTC)
7	47 - 55	Latitude	i2,a1,f5.2,a1	dd-mm.mmN(S)
8	57 - 66	Longitude	i3,a1,f5.2,a1	ddd-mm.mmE(W)
9	68 - 71	Number of data lines	i4	
10	72 - 73	Terminator	-	CR+LF

Data part

No.	Column	Content	Unit	Format	Remarks
1	1 - 11	Pressure	dbar	f11.3	
2	12 - 22	Temperature	deg-C	f11.4	ITS-90
3	23 - 33	Salinity	PSU	f11.4	PSS-78
4	34 - 44	Dissolved oxygen	umol/kg	f11.3	
5	45 - 55	Flag	-	i11	1 - 7 : space 8 : flag of pressure 9 : flag of temperature 10 : flag of salinity 11 : flag of dissolved oxygen * reference : <a href="#">Definition of Quality Control Flags</a>
6	56 - 57	Terminator	-	-	CR+LF

Each contents of the data part is stored in 11 bytes.

Missing value is presented by '-5', and error value is presented by '-9'.

#### Definition of Quality Control Flags

##### 1. Depth Flags

- 0 - accepted value
- 1 - error in recorded depth ( same or less than previous depth )
- 2 - density inversion

##### 2. Observed Level Flags

- N - missing value
- 0 - accepted value
- 1 - range outlier ( outside of broad range check )
- 2 - failed inversion check
- 3 - failed gradient check
- 4 - zero anomaly
- 5 - failed combined gradient and inversion checks
- 6 - failed range and inversion checks
- 7 - failed range and gradient checks
- 8 - failed range and zero anomaly checks
- 9 - failed range and combined gradient and inversion checks
- A - failed visual check

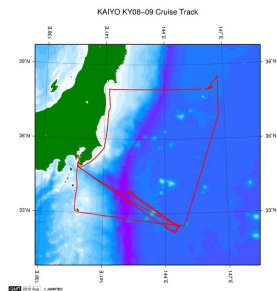
QCed data were added flag according to the NODC (National Oceanographic Data Center) quality control procedure, additionally visually checked. Please see the site of NODC of the following link for quality control procedure.

[QUALITY CONTROL AND PROCESSING OF HISTORICAL OCEANOGRAPHIC TEMPERATURE, SALINITY, AND OXYGEN DATA](#)

#### Sample Program

[ex\\_read2.f](#)

#### Related Information



[Enlarge Image](#)

#### KY08-09

Ship Name: KAIYO

Period: 2008-09-02 - 2008-09-17

Chief Scientist: Hiroshi Ichikawa (JAMSTEC)

Project Name: [Station KEO]

Proposal Kuroshio Transport and Surface Flux Observation Study

Title:

#### Update History

2017-06-22	An observation data was registerd.
2014-10-02	An observation data was registerd.
2014-02-06	An observation data was registerd.
2013-03-22	An observation data was registerd.
2012-10-27	An observation data was registerd.

#### JAMSTEC

[Site Policy](#)  
[Privacy Policy](#)  
[Application for Data and Samples](#)  
[Data Policy](#)

[What's New](#)  
[Update History](#)  
[Feeds](#)

#### Lists

[Publication List](#)  
[Amount of Public Info.](#)

#### Data

[Map Search](#)  
[Data Tree](#)  
[Detailed Search](#)

#### Information of the Ships

[NATSUSHIMA](#)  
[KAIYO](#)  
[YOKOSUKA](#)  
[MIRAI](#)  
[KAIREI](#)  
[CHIKYU](#)  
[KAIMEI](#)  
[SHINSEI MARU](#)  
[HAKUHO MARU](#)

#### Information of the Submersibles

[KAIKO](#)  
[SHINKAI 2000](#)  
[SHINKAI 6500](#)  
[DEEP TOW](#)  
[HYPER-DOLPHIN](#)  
[URASHIMA](#)  
[YOKOSUKA DEEP TOW](#)  
[6K Camera DEEP TOW](#)  
[6K Sonar DEEP TOW](#)  
[KM-ROV](#)  
[POWER GRAB SAMPLER \(SHELL\)](#)  
[POWER GRAB SAMPLER \(CLOW\)](#)  
[BMS](#)

#### Go to a Cruise Information

Cruise ID:

#### Go to a Dive Information

Dive ID:

Copyright 2011 Japan Agency for Marine-Earth Science and Technology



**JAMSTEC**  
JAPAN AGENCY FOR MARINE-EARTH SCIENCE AND TECHNOLOGY

国立研究開発法人  
海洋研究開発機構

## KAIYO KY08-09 Conductivity-Temperature-Depth Profiler (CTD)

Last Modified: 2017-06-22

[ReadMe](#) [Observation Data](#) [Data Format](#)

Cruise ID: **KY08-09**

Conductivity-Temperature-Depth Profiler (CTD): Processed (DMO)-QCed

Data Policy: **JAMSTEC**

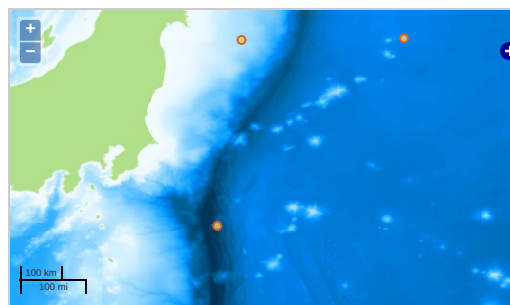
Observation Items: Pressure, Temperature, Salinity, Dissolved oxygen

Science Keywords:

OCEANS > OCEAN CHEMISTRY > OXYGEN  
OCEANS > OCEAN > WATER  
TEMPERATURE TEMPERATURE  
OCEANS > SALINITY/DENSITY > SALINITY

### Observation Map

1. Clicking the icon displays a balloon with observation information.
2. Then click the observation name, figures will be displayed.



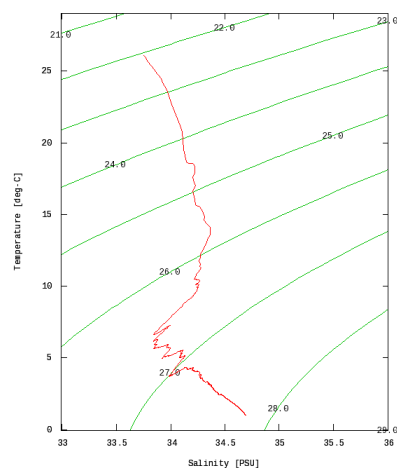
Imagery reproduced from ...

### Figures

JKE001



KY08-09: JKE001  
Conductivity-Temperature-Depth Profiler (CTD): Salinity



Only values evaluated as "good : all flags are 0" are plotted in profiles.  
Please see Format Page for the definition of quality flags.

### Data List

[Add to Basket](#)

☐ File names

☐ JKE001.dat

☐ N08\_01.dat

☐ W08\_01.dat

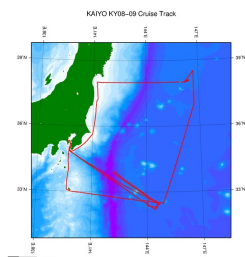
☐ ex\_read2.f (Sample Program)

• Observation List

The list of observation is shown as follows.

Observation	Time and Date	Lat. [°]	Lon. [°]
JKE001	2008-09-03 23:23	38.0385	146.3056
N08_01	2008-09-03 06:13	38.0010	142.6981
W08_01	2008-09-13 23:05	33.8748	142.1611

## Related Information



[Enlarge Image](#)

### KY08-09

Ship Name: KAIYO  
Period: 2008-09-02 - 2008-09-17  
Chief Scientist: Hiroshi Ichikawa (JAMSTEC)  
Project Name: [Station KEO]  
Proposal: Kuroshio Transport and Surface Flux Observation Study  
Title:

## Update History

2017-06-22	An observation data was registerd.
2014-10-02	An observation data was registerd.
2014-02-06	An observation data was registerd.
2013-03-22	An observation data was registerd.
2012-10-27	An observation data was registerd.

### JAMSTEC

[Site Policy](#)  
[Privacy Policy](#)  
[Application for Data and Samples](#)  
[Data Policy](#)  
[What's New](#)  
[Update History](#)  
[Feeds](#)

[Lists](#)  
[Publication List](#)  
[Amount of Public Info.](#)

[Data](#)  
[Map Search](#)  
[Data Tree](#)  
[Detailed Search](#)

### Information of the Ships

[NATSUSHIMA](#)  
[KAIYO](#)  
[YOKOSUKA](#)  
[MIRAI](#)  
[KAIREI](#)  
[CHIKYU](#)  
[KAIMEI](#)  
[SHINSEI MARU](#)  
[HAKUHO MARU](#)

### Information of the Submersibles

[KAIKO](#)  
[SHINKAI 2000](#)  
[SHINKAI 6500](#)  
[DEEP TOW](#)  
[HYPER-DOLPHIN](#)  
[URASHIMA](#)  
[YOKOSUKA DEEP TOW](#)  
[6K Camera DEEP TOW](#)  
[6K Sonar DEEP TOW](#)  
[KM-ROV](#)  
[POWER GRAB SAMPLER \(SHELL\)](#)  
[POWER GRAB SAMPLER \(CLOW\)](#)  
[BMS](#)

### Go to a Cruise Information

Cruise ID:

### Go to a Dive Information

Dive ID:

Copyright 2011 Japan Agency for Marine-Earth Science and Technology



**JAMSTEC** 国立研究開発法人  
海洋研究開発機構  
JAPAN AGENCY FOR MARINE-EARTH SCIENCE AND TECHNOLOGY