

MIRAI MR20-E01 Cloud Ceiling

Last Modified: 2020-12-25

[ReadMe](#) [Observation Data](#) [Data Format](#)

Cruise ID: [MR20-E01](#)

Cloud Ceiling: Raw

Data Policy: [JAMSTEC](#)

Observation Items: Cloud base height

Science Keywords:

ATMOSPHERE > CLOUDS > CLOUD
BASE

Cruise Report

http://www.godac.jamstec.go.jp/catalog/data/doc_catalog/media/MR20-E01_all.pdf

For Using Data

Principal Investigator

Data Management Office

Use Constraints

See [Terms and Conditions](#) about constrain of use.

Data Citation

See [Terms and Conditions](#) about data citation.

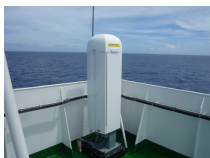
Period (UTC)

2020-08-01 00:00 – 2020-09-13 22:50

Instrument

Instrument:

Ceiliometer (MR13-02B -)



Overview

Ceiliometer is the system that measures cloud base height by laser pulse emitted vertically.

Up to three levels of cloud base can be detected by measuring the change of strength of backscatter signal.

And the cloud base height is calculated from the elapsed time from laser pulse emission to backscatter detection.

In case the cloud base is obscured, it measures the vertical visibility.

System

Manufacturer: Vaisala Inc.
Type: CL51
Serial number: J0510004
Measurement range: up to 15000m (Backscatter measurement)
up to 13000m (Cloud detection)
Resolution: 10m
Sampling rate: 10-120 seconds available (36sec as default)
Accuracy: greater of +-1% or +-5m
Location: Compass deck bow side (18 meters high from sea surface)
Recording software: CL-VIEW Ver2.00 (after MR13-02B Leg1)

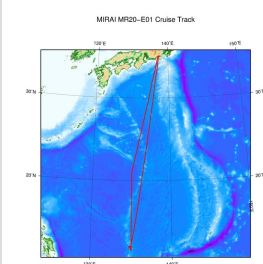
Note

(1) File naming rule for YYMMDDHH.DAT(CL-VIEW Ver2.00).

YY : Year in 2 digit
MM : Recording start month (UTC)
DD : Recording start day (UTC)
HH : Recording start time (UTC)

(2) Adjustment for the height : No sea surface level adjustment is applied to the raw data.

Related Information



[Enlarge Image](#)

MR20-E01

Ship Name: MIRAI

Period: 2020-08-01 - 2020-09-13

Chief Scientist: Satoru Yokoi (JAMSTEC)

Proposal ▶ Study on air-sea interaction associated with the northward-propagating boreal summer intraseasonal oscillation

Title:

Update History

2020-12-25 An observation data was registerd.

JAMSTEC
Site Policy
Privacy Policy
Application for Data and Samples
Data Policy

What's New
Update History
Feeds

Lists
Publication List
Amount of Public Info.

Data
Map Search
Data Tree
Detailed Search

Information of the Ships
NATSUSHIMA
KAIYO
YOKOSUKA
MIRAI
KAIREI
CHIKYU
KAIMEI
SHINSEI MARU
HAKUHO MARU

Information of the Submersibles
KAIKO
SHINKAI 2000
SHINKAI 6500
DEEP TOW
HYPER-DOLPHIN
URASHIMA
YOKOSUKA DEEP TOW
6K Camera DEEP TOW
6K Sonar DEEP TOW
KM-ROV
POWER GRAB
SAMPLER (SHELL)
POWER GRAB
SAMPLER (CLOW)
BMS

Go to a Cruise Information

Cruise ID:

Go to a Dive Information

Dive ID:

Copyright 2011 Japan Agency for Marine-Earth Science and Technology



MIRAI MR20-E01 Cloud Ceiling

Last Modified: 2020-12-25

ReadMe Observation Data **Data Format**

Cruise ID: [MR20-E01](#)

Cloud Ceiling: Raw

Data Policy: [JAMSTEC](#)

Ceiling Raw

The record length of the data file is 56 bytes.

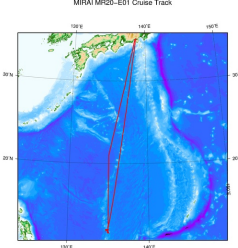
No.	Column	Content	Format	Remarks
1	1 - 8	Date	i4,i2,i2	YYYYMMDD (UTC)
2	10 - 15	Time	i2,i2,i2	hhmmss (UTC)
3	17 - 19	Operating software	a3	'CT0' : CT-VIEW 'CL0' : CL-VIEW
4	20 - 21	Software version	i2	Version of operating software
5	22	Data status	i1	1: Cloud base height/vertical visibility data 2: Cloud base height/vertical visibility, backscatter signal 6: Cloud base height/vertical visibility, cloud amount/height of cloud layer 7: Cloud base height/vertical visibility, backscatter signal, cloud amount/height of cloud layer
6	23	Spare character	a1	
7	25	Detection status	i1	0: Clear 1: One cloud base detected 2: Two cloud bases detected 3: Three cloud bases detected 4: Full obscuration determined but no cloud base detected 5: Some obscuration detected but determined to transparent
8	26	Warning and alarm information	a1	0: Self-check OK W: At least one warning active, no alarms A: At least one alarm active See No.12:observation information
9	28 - 32	Lowest cloud base height or vertical visibility	i5	In the case of detection status is 1,2 or 3: Lowest cloud base height In the case of detection status is 4: Calculation of vertical visibility In the case of detection status is 0 or 5: ///// Unit: See No.12:observation information
10	34 - 38	Second lowest cloud base height or highest signal detected	i5	In the case of detection status is 2 or 3: Second lowest cloud base height In the case of detection status is 4: Maximum height that a signal was detected In the case of detection status is 0,1 or 5: ///// Unit: See No.12:observation information
11	40 - 44	Highest cloud base height	i5	In the case of detection status is 3: Highest cloud base height In the case of detection status is 0,1,2,4,5: ///// Unit: See No.12:observation information
12	46 - 53	Observation information	a8	*1
13	55 - 56	Terminator	a2	CR+LF

*1: Observation information

The information is presented using 8 bytes characters. Each character, indicated in hexadecimal character, shows the following meanings;


Byte	Hexadecimal character (0:on, -:off)																Message(A:alarm, W:warning)
	0	1	2	3	4	5	6	7	8	9	A	B	C	D	E	F	
1	-	-	-	-	-	-	-	0	0	0	0	0	0	0	0	0	Laser temperature shut-off(A)
	-	-	-	0	0	0	0	-	-	-	0	0	0	0	0	0	Laser failure(A)
	-	0	0	-	0	0	0	-	0	0	-	0	0	-	0	0	Receiver failure(A)
	0	-	0	-	0	-	0	-	0	-	0	-	0	-	0	0	Voltage failure(A)
2	-	-	-	-	-	-	-	0	0	0	0	0	0	0	0	0	Spare(A)
	-	-	-	0	0	0	0	-	-	0	0	0	0	0	0	0	Spare(A)
	-	0	0	-	0	0	0	-	0	0	-	0	0	-	0	0	Spare(A)
	0	-	0	-	0	-	0	-	0	-	0	-	0	-	0	0	Spare(A)
3	-	-	-	-	-	-	-	0	0	0	0	0	0	0	0	0	Windows contaminated(W)
	-	-	-	0	0	0	0	-	-	-	0	0	0	0	0	0	Battery low(W)
	-	0	0	-	0	0	0	-	0	0	-	0	0	-	0	0	Laser power low(W)
	0	-	0	-	0	-	0	-	0	-	0	-	0	-	0	0	Laser temperature high or low(W)
4	-	-	-	-	-	-	-	0	0	0	0	0	0	0	0	0	Internal temperature high or low(W)
	-	-	-	0	0	0	0	-	-	-	0	0	0	0	0	0	Voltage high or low(W)
	-	0	0	-	0	0	0	-	0	0	-	0	0	-	0	0	Relative Humidity is > 85%(W)
	0	-	0	-	0	-	0	-	0	-	0	-	0	-	0	0	Receiver cross-talk compensation poor(W)
5	-	-	-	-	-	-	-	0	0	0	0	0	0	0	0	0	Blower suspect(W)
	-	-	-	0	0	0	0	-	-	-	0	0	0	0	0	0	Spare(W)
	-	0	0	-	0	0	0	-	0	0	-	0	0	-	0	0	Spare(W)
	0	-	0	-	0	-	0	-	0	-	0	-	0	-	0	0	Spare(W)
6	-	-	-	-	-	-	-	0	0	0	0	0	0	0	0	0	Blower is ON
	-	-	-	0	0	0	0	-	-	-	0	0	0	0	0	0	Blower heater is ON
	-	0	0	-	0	0	0	-	0	0	-	0	0	-	0	0	Internal heater is ON
	0	-	0	-	0	-	0	-	0	-	0	-	0	-	0	0	Units are METERS if ON , else FEET
7	-	-	-	-	-	-	-	0	0	0	0	0	0	0	0	0	Polling mode is ON
	-	-	-	0	0	0	0	-	-	-	0	0	0	0	0	0	Working from battery
	-	0	0	-	0	0	0	-	0	0	-	0	0	-	0	0	Single sequence mode is ON
	0	-	0	-	0	-	0	-	0	-	0	-	0	-	0	0	Manual settings are effective
8	-	-	-	-	-	-	-	0	0	0	0	0	0	0	0	0	Tilt angle is > 45 degrees
	-	-	-	0	0	0	0	-	-	-	0	0	0	0	0	0	High background radiance
	-	0	0	-	0	0	0	-	0	0	-	0	0	-	0	0	Manual blower control
	0	-	0	-	0	-	0	-	0	-	0	-	0	-	0	0	Spare

Related Information



MIRAI MP20-E01 Cruise Track

MR20-E01
Ship Name: MIRAI
Period: 2020-08-01 - 2020-09-13
Chief Scientist: Satoru Yokoi (JAMSTEC)
Proposal ▶ Study on air-sea interaction associated with the northward-propagating boreal summer intraseasonal oscillation

 [Enlarge Image](#)

Update History	
2020-12-25	An observation data was registerd.

JAMSTEC

Site Policy

Privacy Policy

Application for Data and Samples

Data Policy

What's New

Update History

Feeds

Lists

Publication List

Amount of Public Info.

Data

Map Search

Data Tree

Detailed Search

Information of the Ships

NATSUSHIMA

KAIYO

YOKOSUKA

MIRAI

KAIREI

CHIKYU

KAIIMEI

SHINSEI MARU

HAKUHO MARU

Information of the Submersibles

KAIKO

SHINKAI 2000

SHINKAI 6500

DEEP TOW

HYPER-DOLPHIN

URASHIMA

YOKOSUKA DEEP TOW

6K Camera DEEP TOW

6K Sonar DEEP TOW

KM-ROV

POWER GRAB

SAMPLER (SHELL)

POWER GRAB SAMPLER (CLOW)

BMS

Go to a Cruise Information

Cruise ID:

Go

Go to a Dive Information

Dive ID:

Go

Copyright 2011 Japan Agency for Marine-Earth Science and Technology



JAMSTEC

国立研究開発法人
海洋研究開発機構

JAPAN AGENCY FOR MARINE-EARTH SCIENCE AND TECHNOLOGY

MIRAI MR20-E01 Cloud Ceiling

Last Modified: 2020-12-25

[ReadMe](#) [Observation Data](#) [Data Format](#)

Cruise ID: [MR20-E01](#)

Cloud Ceiling: Raw

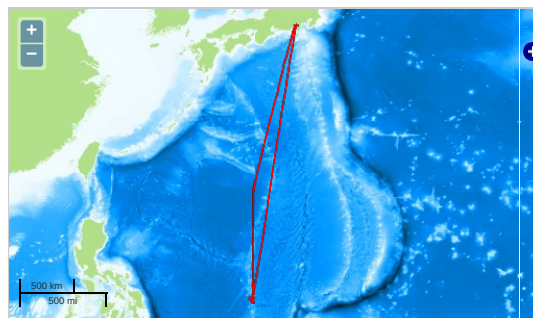
Data Policy: [JAMSTEC](#)

Observation Items: Cloud base height

Science Keywords:

ATMOSPHERE > CLOUDS > CLOUD
BASE

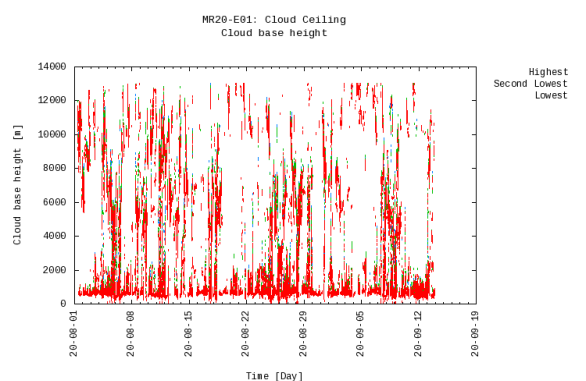
Observation Map



— ... Observation Line — ... Navigation ● ... Observation, Dive Point, Hole

Imagery reproduced from ...

Figures



Data List

[Add to Basket](#)

☐ File names

☐ 20080100.DAT

☐ 20080200.DAT

☐ 20080300.DAT

☐ 20080400.DAT

☐ 20080500.DAT

☐ 20080600.DAT

☐ 20080700.DAT

☐ 20080800.DAT

☐ 20080900.DAT

☐ 20081000.DAT

☐ 20081100.DAT

☐ 20081200.DAT

☐ 20081300.DAT

☐ 20081400.DAT

☐ 20081500.DAT

☐ 20081600.DAT

☐ 20081700.DAT

☐ 20081800.DAT

☐ 20081900.DAT

☐ 20082000.DAT

☐ 20082100.DAT

☐ 20082200.DAT

☐ 20082300.DAT

☐ 20082400.DAT

☐ 20082500.DAT

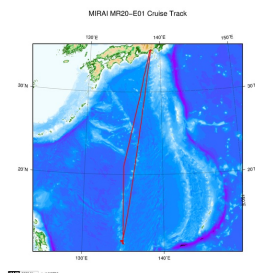
☐ 20082600.DAT

☐ 20082700.DAT

☐ 20082800.DAT

<input type="checkbox"/>	20082900.DAT
<input type="checkbox"/>	20083000.DAT
<input type="checkbox"/>	20083100.DAT
<input type="checkbox"/>	20090100.DAT
<input type="checkbox"/>	20090200.DAT
<input type="checkbox"/>	20090300.DAT
<input type="checkbox"/>	20090400.DAT
<input type="checkbox"/>	20090500.DAT
<input type="checkbox"/>	20090600.DAT
<input type="checkbox"/>	20090700.DAT
<input type="checkbox"/>	20090800.DAT
<input type="checkbox"/>	20090900.DAT
<input type="checkbox"/>	20091000.DAT
<input type="checkbox"/>	20091100.DAT
<input type="checkbox"/>	20091200.DAT
<input type="checkbox"/>	20091300.DAT

Related Information



[Enlarge Image](#)

MR20-E01

Ship Name: MIRAI
 Period: 2020-08-01 ~ 2020-09-13
 Chief Scientist: Satoru Yokoi (JAMSTEC)
 Proposal ▶ Study on air-sea interaction associated with the northward-propagating boreal summer intraseasonal oscillation

Update History

2020-12-25	An observation data was registered.
------------	-------------------------------------

JAMSTEC

Site Policy
 Privacy Policy
 Application for Data and Samples
 Data Policy
 What's New
 Update History
 Feeds

Lists

Publication List
 Amount of Public Info.
 Data
 Map Search
 Data Tree
 Detailed Search

Information of the Ships

NATSUSHIMA
 KAIYO
 YOKOSUKA
 MIRAI
 KAIREI
 CHIKYU
 KAIMEI
 SHINSEI MARU
 HAKUHO MARU

Information of the Submersibles

KAIKO
 SHINKAI 2000
 SHINKAI 6500
 DEEP TOW
 HYPER-DOLPHIN
 URASHIMA
 YOKOSUKA DEEP TOW
 6K Camera DEEP TOW
 6K Sonar DEEP TOW
 KM-ROV
 POWER GRAB
 SAMPLER (SHELL)
 POWER GRAB
 SAMPLER (CLOW)
 BMS

Go to a Cruise Information

Cruise ID:

Go to a Dive Information

Dive ID:

Copyright 2011 Japan Agency for Marine-Earth Science and Technology

 **JAMSTEC** 国立研究開発法人
 海洋研究開発機構
 JAPAN AGENCY FOR MARINE-EARTH SCIENCE AND TECHNOLOGY