

MIRAI MR07-06 Leg2 Shipboard Acoustic Doppler Current Profiler (ADCP)

Last Modified: 2017-04-11

[ReadMe](#) [Observation Data](#)

Cruise ID: [MR07-06 Leg2](#)

Shipboard Acoustic Doppler Current Profiler (ADCP): Processed (PI)

Data Policy: [JAMSTEC](#)

Observation Items: Depth, Absolute velocity (zonal, meridional and vertical)

Science Keywords:

OCEANS > OCEAN CIRCULATION > OCEAN CURRENTS

Cruise Report

http://www.godac.jamstec.go.jp/catalog/data/doc_catalog/media/MR07-06_leg1-2_all.pdf

For Using Data

Principal Investigator

Shinya Kouketsu (JAMSTEC)

Use Constraints

See [Terms and Conditions](#) about constrain of use.

Data Citation

See [Terms and Conditions](#) about data citation.

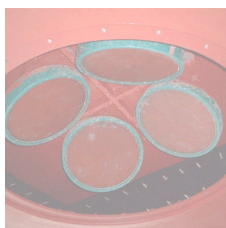
Instrument

Instrument:

Shipboard acoustic doppler current profiler (ADCP) (MR08-02 -)

Instrument:

Shipboard acoustic doppler current profiler (ADCP) (- MR08-E01)



About this data

- Please see the [Data book](#) for details of data.

- File name

adcp_P1_1_a.txt : revisit cruise for P1 leg1

adcp_P1_1_b.txt : revisit cruise for P1 leg1

adcp_P14_1_a.txt :revisit cruise for P14 leg1 (& a part of the P1 revisit)

adcp_P14_1_b.txt :revisit cruise for P14 leg1 (& a part of the P1 revisit)

adcp_P14_2_a.txt :revisit cruise for P14 leg2

adcp_P14_2_b.txt :revisit cruise for P14 leg2

- Data structure of each profile

(1) adcp_***_*.a.txt

The file consists of 239 profiles on the CTD site. Each profile consists of header and data. The header has three lines representing analyzed site, date and time, and position. The data has 68 layers in which depth, zonal velocity, meridional velocity, and vertical velocity of each grid are stored. Unit of depth is in meter.

Unit of flow is in m/s. On the CTD station, the CTD station name (e.g. "143_1") is recorded as the analyzed site in the header.

Mean time and position were calculated and recorded using the ADCP profiles during the CTD operation was made. The "99.999" f in the data represents no available data stored.

[data structure of the data set A]

Line 1: header 1

Column 1: cruise code

Column 2: analyzed site

Line 2: header 2

date

Line 3: header 3

Column 1: longitude (degree E)

Column 2: latitude (degree N)

Line 4-70: flow data in each depth level

Column 1: depth (m)

Column 2: zonal velocity (m/s)

Column 3: meridional velocity (m/s)

(2) adcp_***_*.b.txt

Flow data processed in every three minutes are stored in the data set B.

The data structure is the same as that of the data set B, except for the analyzed site in the header 1.

[data structure of the data set B: every 3 minutes]

Line 1: header 1

Column 1: cruise code

Column 2: sequential record number

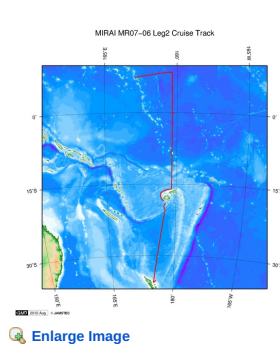
Line 2: header 2

date

date
Line 3: header 3
Column 1: longitude (degree E)
Column 2: latitude (degree N)
Line 4-38: flow data in each depth level
Column 1: depth (m)
Column 2: zonal velocity (m/s)
Column 3: meridional velocity (m/s)

- Contact
Shinya Kouketsu (JAMSTEC)
skouketsu@jamstec.go.jp

Related Information



MR07-06 Leg2
Ship Name: MIRAI
Period: 2007-11-21 - 2007-12-25
Chief Scientist: Akihiko Murata (JAMSTEC)
Project Name: [POST-WOCE Hydrography]

Update History

2017-04-11	An observation data was registerd.
2012-12-06	An observation data was registerd.
2012-10-26	An observation data was registerd.

JAMSTEC

Site Policy
Privacy Policy
Application for Data and Samples
Data Policy

What's New
Update History
Feeds

Lists

Publication List
Amount of Public Info.

Data

Map Search
Data Tree
Detailed Search

Information of the Ships

NATSUSHIMA
KAIYO
YOKOSUKA
MIRAI
KAIREI
CHIKYU
KAIMEI
SHINSEI MARU
HAKUHO MARU

Information of the Submersibles

KAIKO
SHINKAI 2000
SHINKAI 6500
DEEP TOW
HYPER-DOLPHIN
URASHIMA
YOKOSUKA DEEP TOW
6K Camera DEEP TOW
6K Sonar DEEP TOW
KM-ROV
POWER GRAB SAMPLER (SHELL)
POWER GRAB SAMPLER (CLOW)
BMS

Go to a Cruise Information

Cruise ID:

Go to a Dive Information

Dive ID:



MIRAI MR07-06 Leg2 Shipboard Acoustic Doppler Current Profiler (ADCP)

Last Modified: 2017-04-11

[ReadMe](#)

[Observation
Data](#)

Cruise ID: [MR07-06 Leg2](#)

Shipboard Acoustic Doppler Current Profiler (ADCP) Processed (PI)

Data Policy: [JAMSTEC](#)

Observation Items: Depth, Absolute velocity (zonal, meridional and vertical)

Science Keywords:

OCEANS > OCEAN CIRCULATION > OCEAN
CURRENTS

Cruise Report

http://www.godac.jamstec.go.jp/catalog/data/doc_catalog/media/MR07-06_leg1-2_all.pdf

[For Using Data](#)

Principal Investigator

Shinya Kouketsu (JAMSTEC)

Use Constraints

See [Terms and Conditions](#) about constrain of use.

Data Citation

See [Terms and Conditions](#) about data citation.

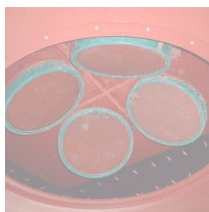
Instrument

Instrument:

Shipboard acoustic doppler current
profiler (ADCP) (MR08-02 -)

Instrument:

Shipboard acoustic doppler current
profiler (ADCP) (- MR08-E01)



About this data

- Please see the [Data book](#) for details of data.

- File name

adcp_P1_1_a.txt : revisit cruise for P1 leg1

adcp_P1_1_b.txt : revisit cruise for P1 leg1

adcp_P14_1_a.txt :revisit cruise for P14 leg1 (& a part of the P1 revisit)

adcp_P14_1_b.txt :revisit cruise for P14 leg1 (& a part of the P1 revisit)

adcp_P14_2_a.txt :revisit cruise for P14 leg2

adcp_P14_2_b.txt :revisit cruise for P14 leg2

- Data structure of each profile

(1) adcp_***_a.txt

The file consists of 239 profiles on the CTD site. Each profile consists of header and data. The header has three lines representing analyzed site, date and time, and position. The data has 68 layers in which depth, zonal velocity, meridional velocity, and vertical velocity of each grid are stored. Unit of depth is in meter.

Unit of flow is in m/s. On the CTD station, the CTD station name (e.g. "143_1") is recorded as the analyzed site in the header.

Mean time and position were calculated and recorded using the ADCP profiles during the CTD operation was made. The "99.999" f in the data represents no available data stored.

[data structure of the data set A]

Line 1: header 1

Column 1: cruise code

Column 2: analyzed site

Line 2: header 2

date

Line 3: header 3

Column 1: longitude (degree E)

Column 2: latitude (degree N)

Line 4-70: flow data in each depth level

Column 1: depth (m)

Column 2: zonal velocity (m/s)

Column 3: meridional velocity (m/s)

(2) adcp_***_b.txt

Flow data processed in every three minutes are stored in the data set B.

The data structure is the same as that of the data set B, except for the analyzed site in the header 1.

[data structure of the data set B: every 3 minutes]

Line 1: header 1

Column 1: cruise code

Column 2: sequential record number

Line 2: header 2

date

Line 3: header 3

Column 1: longitude (degree E)

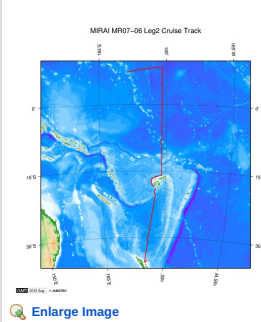
Column 2: latitude (degree N)

Line 4-38: flow data in each depth level

Column 1: depth (m)
Column 2: zonal velocity (m/s)
Column 3: meridional velocity (m/s)

- Contact
Shinya Kouketsu (JAMSTEC)
skouketsu@jamstec.go.jp

Related Information



MR07-06 Leg2
Ship Name: MIRAI
Period: 2007-11-21 - 2007-12-25
Chief Scientist: Akihiko Murata (JAMSTEC)
Project Name: [POST-WOCE Hydrography]

Update History

2017-04-11	An observation data was registered.
2012-12-06	An observation data was registered.
2012-10-26	An observation data was registered.

JAMSTEC
Site Policy
Privacy Policy
Application for Data and Samples
Data Policy
What's New
Update History
Feeds

Lists
Publication List
Amount of Public Info.
Data
Map Search
Data Tree
Detailed Search

Information of the Ships
NATSUSHIMA
KAIYO
YOKOSUKA
MIRAI
KAIREI
CHIKYU
KAIMEI
SHINSEI MARU
HAKUHO MARU

Information of the Submersibles
KAIKO
SHINKAI 2000
SHINKAI 6500
DEEP TOW
HYPER-DOLPHIN
URASHIMA
YOKOSUKA DEEP TOW
6K Camera DEEP TOW
6K Sonar DEEP TOW
KM-ROV
POWER GRAB
SAMPLER (SHELL)
POWER GRAB
SAMPLER (CLOW)
BMS

Go to a Cruise Information

Cruise ID:

Go to a Dive Information

Dive ID:

Copyright 2011 Japan Agency for Marine-Earth Science and Technology



JAMSTEC 国立研究開発法人
海洋研究開発機構
JAPAN AGENCY FOR MARINE-EARTH SCIENCE AND TECHNOLOGY

MIRAI MR07-06 Leg2 Shipboard Acoustic Doppler Current Profiler (ADCP)

Last Modified: 2017-04-11

[ReadMe](#) [Observation Data](#)

Cruise ID: [MR07-06 Leg2](#)

Shipboard Acoustic Doppler Current Profiler (ADCP): Processed (PI)

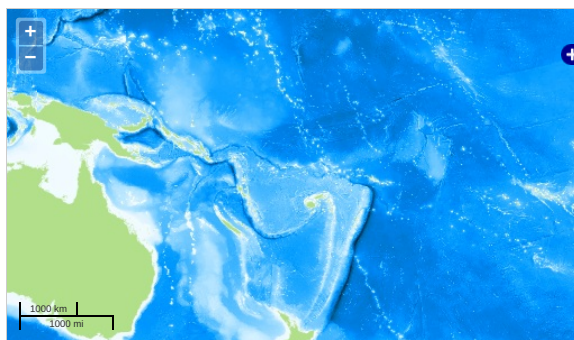
Data Policy: [JAMSTEC](#)

Observation Items: Depth, Absolute velocity (zonal, meridional and vertical)

Science Keywords:

OCEANS > OCEAN CIRCULATION > OCEAN CURRENTS

Observation Map



... Observation Line ... Navigation ... Observation, Dive Point, Hole Imagery reproduced from ...

Data List

☐ File names

☐ adcp_P14_1_a.txt

☐ adcp_P14_1_b.txt

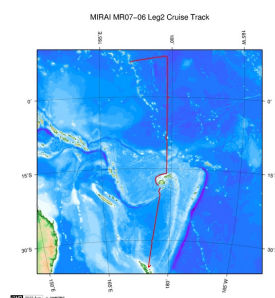
☐ adcp_P14_2_a.txt

☐ adcp_P14_2_b.txt

☐ adcp_P1_1_a.txt

☐ adcp_P1_1_b.txt

Related Information



[Enlarge Image](#)

MR07-06 Leg2

Ship Name: MIRAI

Period: 2007-11-21 - 2007-12-25

Chief Scientist: Akihiko Murata (JAMSTEC)

Project Name: [POST-WOCE Hydrography]

Update History

2017-04-11	An observation data was registerd.
2012-12-06	An observation data was registerd.
2012-10-26	An observation data was registerd.

JAMSTEC

[Site Policy](#)
[Privacy Policy](#)
[Application for Data and Samples](#)
[Data Policy](#)

[What's New](#)
[Update History](#)
[Feeds](#)

Lists

[Publication List](#)
[Amount of Public Info.](#)

Data

[Map Search](#)
[Data Tree](#)
[Detailed Search](#)

Information of the Ships

[NATSUSHIMA](#)
[KAIYO](#)
[YOKOSUKA](#)
[MIRAI](#)
[KAIREI](#)
[CHIKYU](#)
[KAIMEI](#)
[SHINSEI MARU](#)
[HAKUHO MARU](#)

Information of the Submersibles

[KAIKO](#)
[SHINKAI 2000](#)
[SHINKAI 6500](#)
[DEEP TOW](#)
[HYPER-DOLPHIN](#)
[URASHIMA](#)
[YOKOSUKA DEEP TOW](#)
[6K Camera DEEP TOW](#)
[6K Sonar DEEP TOW](#)
[KM-ROV](#)
[POWER GRAB SAMPLER \(SHELL\)](#)
[POWER GRAB SAMPLER \(CLOW\)](#)
[BMS](#)

Go to a Cruise Information

Cruise ID:

Go to a Dive Information

Dive ID:

