

MIRAI MR17-04 Leg2 Black carbon number concentration

Last Modified: 2019-09-30

[ReadMe](#) [Observation Data](#)

Cruise ID: [MR17-04 Leg2](#)

Black carbon number concentration: Processed (PI)

Data Policy: [JAMSTEC](#)

Observation Items:

Science Keywords:

Data Information

Black carbon measurements were continuously conducted during the cruise using a laser-induced-incandescence BC analyzer (SP2, Droplet Measurement Technologies) located in the Research Information Center, to which ambient air was drawn through ~3-m-long conductive silicon tube. Sampling air was dried by a Nafion-type aerosol dryer placed in front of SP2 to avoid the condensation of water inside the tubing and instrument and to sample "completely dried" particles.

Cruise Report

http://www.godac.jamstec.go.jp/catalog/data/doc_catalog/media/MR17-04_leg1-2_all.pdf

For Using Data

Principal Investigator

Fumikazu Taketani (JAMSTEC)

Use Constraints

It is recommended to contact the above investigator before use for publication.

Data Citation

It is recommended to contact the above investigator before use for publication.

Instrument

Instrument:

Laser induced incandescence BC analyzer (SP2, Droplet Measurement Technologies)

Instrument Information:

Realtime measurement of single BC-containing particle using a laser induced incandescence technique.

The numbers of detected BC-containing particle in a minute interval were converted into the number concentration of BC-containing particles using the observed sampling flow rate. The minutely concentrations were averaged into a daily concentrations.

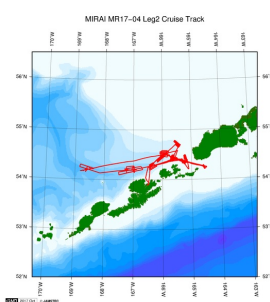


Data Format

Text format. See the header of the data files for more details.

Related Information

[Cruise Data](#) [Dive Data](#)



[Enlarge Image](#)

MR17-04 Leg2

Ship Name: MIRAI

Period: 2017-08-05 - 2017-08-21

Chief Scientist: Yoshihiro Fujiwara (JAMSTEC)

Proposal ▶ Collaborative experiment on Biogeochemical and Ecosystem Studies for sub-Arctic sea

Title:

Update History

2019-09-30

An observation data was registerd.

JAMSTEC

[Site Policy](#)
[Privacy Policy](#)
[Application for Data and Samples](#)
[Data Policy](#)

What's New

[Update History](#)
[Feeds](#)

Lists

[Publication List](#)
[Amount of Public Info.](#)

Data

[Map Search](#)
[Data Tree](#)
[Detailed Search](#)

Information of the Ships

[NATSUSHIMA](#)
[KAIYO](#)
[YOKOSUKA](#)
[MIRAI](#)
[KAIREI](#)
[CHIKYU](#)
[KAIMEI](#)
[SHINSEI MARU](#)
[HAKUHO MARU](#)

Information of the Submersibles

[KAIKO](#)
[SHINKAI 2000](#)
[SHINKAI 6500](#)
[DEEP TOW](#)
[HYPER-DOLPHIN](#)
[URASHIMA](#)
[YOKOSUKA DEEP TOW](#)
[6K Camera DEEP TOW](#)
[6K Sonar DEEP TOW](#)
[KM-ROV](#)
[POWER GRAB SAMPLER \(SHELL\)](#)
[POWER GRAB SAMPLER \(CLOW\)](#)
[BMS](#)

Go to a Cruise Information

Cruise ID:

Go to a Dive Information

Dive ID:

Copyright 2011 Japan Agency for Marine-Earth Science and Technology



JAMSTEC
JAPAN AGENCY FOR MARINE-EARTH SCIENCE AND TECHNOLOGY

国立研究開発法人
海洋研究開発機構

MIRAI MR17-04 Leg2 Black carbon number concentration

Last Modified: 2019-09-30

[ReadMe](#) [Observation Data](#)

Cruise ID: [MR17-04 Leg2](#)

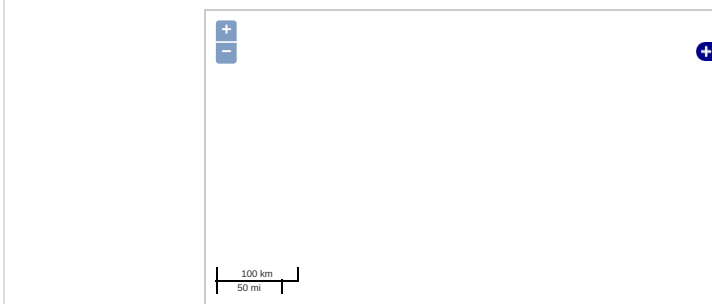
Black carbon number concentration: Processed (PI)

Data Policy: [JAMSTEC](#)

Observation Items:

Science Keywords:

Observation Map



... Observation Line ... Navigation ... Observation, Dive Point, Hole

Data List

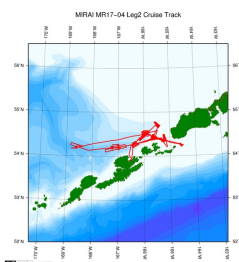
[Add to Basket](#)

File names

MR1704_leg2_BC.csv

Related Information

☒ Cruise Data ☐ Dive Data



[Enlarge Image](#)

MR17-04 Leg2

Ship Name: MIRAI

Period: 2017-08-05 - 2017-08-21

Chief Scientist: Yoshihiro Fujiwara (JAMSTEC)

Proposal ▶ Collaborative experiment on Biogeochemical and Ecosystem Studies for sub-Arctic sea

Title:

Update History

2019-09-30 An observation data was registered.

JAMSTEC

[Site Policy](#)
[Privacy Policy](#)
[Application for Data and Samples](#)
[Data Policy](#)

[What's New](#)
[Update History](#)
[Feeds](#)

Lists

[Publication List](#)
[Amount of Public Info.](#)

[Data](#)
[Map Search](#)
[Data Tree](#)
[Detailed Search](#)

Information of the Ships

[NATSUSHIMA](#)
[KAIYO](#)
[YOKOSUKA](#)
[MIRAI](#)
[KAIREI](#)
[CHIKYU](#)
[KAIMEI](#)
[SHINSEI MARU](#)
[HAKUHO MARU](#)

Information of the Submersibles

[KAIKO](#)
[SHINKAI 2000](#)
[SHINKAI 6500](#)
[DEEP TOW](#)
[HYPER-DOLPHIN](#)
[URASHIMA](#)
[YOKOSUKA DEEP TOW](#)
[6K Camera DEEP TOW](#)
[6K Sonar DEEP TOW](#)
[KM-ROV](#)
[POWER GRAB SAMPLER \(SHELL\)](#)
[POWER GRAB SAMPLER \(CLOW\)](#)
[BMS](#)

Go to a Cruise Information

Cruise ID:

Go to a Dive Information

Dive ID: