

MIRAI MR12-05 Leg1 Underway Thermosalinograph

Last Modified: 2017-04-11

[ReadMe](#) [Observation Data](#) [Data Format](#)

Cruise ID: [MR12-05 Leg1](#)

Underway Thermosalinograph: Processed (PI)

Data Policy: [JAMSTEC](#)

Observation Items: Temperature, Salinity, Dissolved oxygen, Fluorescence, PAR, Chlorophyll

Science Keywords:

OCEANS > OCEAN CHEMISTRY > OXYGEN
OCEANS > OCEAN CHEMISTRY > SALINITY
OCEANS > OCEAN CHEMISTRY > CHLOROPHYLL
OCEANS > SALINITY/DENSITY > SALINITY
OCEANS > OCEAN OPTICS > PHOTOSYNTHETICALLY ACTIVE RADIATION
OCEANS > OCEAN TEMPERATURE > SEA SURFACE TEMPERATURE
OCEANS > OCEAN OPTICS > FLUORESCENCE

Cruise Report

http://www.godac.jamstec.go.jp/catalog/data/doc_catalog/media/MR12-05_leg1-3_all.pdf

For Using Data

Principal Investigator

Hiroshi Uchida (JAMSTEC)

Use Constraints

See [Terms and Conditions](#) about constrain of use.

Data Citation

See [Terms and Conditions](#) about data citation.

Instrument

Instrument:

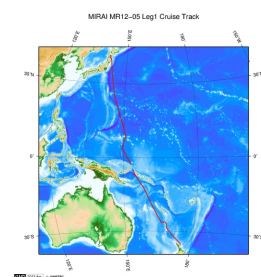
Continuous sea surface water monitoring system (MR10-04 Leg1 - MR14-02)



Overview

Please see the [Data book](#) for details of data.

Related Information



MR12-05 Leg1

Ship Name: MIRAI

Period: 2012-11-05 - 2012-11-25

Chief Scientist: Katsuro Katsumata (JAMSTEC)

Proposal ▶ WOCE-revisit in the western Pacific and Southern oceans

Title:

[Enlarge Image](#)

Update History

2017-04-11	An observation data was registerd.
2015-05-31	An observation data was registerd.
2014-04-09	An observation data was registerd.

JAMSTEC
[Site Policy](#)
[Privacy Policy](#)
[Application for Data and Samples](#)
[Data Policy](#)
What's New
[Update History](#)
[Feeds](#)

Lists
[Publication List](#)
[Amount of Public Info.](#)
Data
[Map Search](#)
[Data Tree](#)
[Detailed Search](#)

Information of the Ships
NATSUSHIMA
KAIYO
YOKOSUKA
MIRAI
KAIREI
CHIKYU
KAIMEI
SHINSEI MARU
HAKUHO MARU

Information of the Submersibles
KAIKO
SHINKAI 2000
SHINKAI 6500
DEEP TOW
HYPER-DOLPHIN
URASHIMA
YOKOSUKA DEEP TOW
6K Camera DEEP TOW
6K Sonar DEEP TOW
KM-ROV
POWER GRAB
SAMPLER (SHELL)
POWER GRAB
SAMPLER (CLOW)
BMS

Go to a Cruise Information

Cruise ID:

Go to a Dive Information

Dive ID:

MIRAI MR12-05 Leg1 Underway Thermosalinograph

Last Modified: 2017-04-11

[ReadMe](#) [Observation Data](#) [Data Format](#)

Cruise ID: [MR12-05 Leg1](#)

Underway Thermosalinograph: Processed (PI)

Data Policy: [JAMSTEC](#)

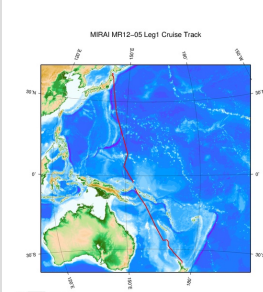
DATA Format

Column No.	Column Heading Mnemonic	Units Mnemonic	Reporting Precision FORTRAN Format	Comments
1	EXPCODE		A12	Expedition code
2	DATE		I8	Date (YYYYMMDD)
3	TIME	UTC	I4	Time (HHMM)
4	LATITUDE	DEG	F10.5	Latitude
5	LONGITUDE	DEG	F10.5	Longitude
6	SPEED	KNOT	F6.1	Ship speed
7	FLOW	L/MIN	F6.1	Flow rate
8	INTAKE-TEMPERATURE	ITS-90	F9.4	Temperature of bottom of the ship (SBE 38)
9	INTAKE-TEMPERATURE_FLAG		I1	see flag definition below
10	TSG-TEMPERATURE	ITS-90	F9.4	Thermosalinograph temperature (SBE 45)
11	TSG-TEMPERATURE_FLAG		I1	see flag definition below
12	TSG-SALINITY	PSS-78	F9.4	Thermosalinograph salinity (SBE 45)
13	TSG-SALINITY_FLAG		I1	see flag definition below
14	SALINITY	PSS-78	F9.4	Sampled salinity
15	SALINITY_FLAG		I1	see flag definition below
16	TSG-OXYGEN	UMOL/KG	F9.2	Oxygen sensor RINKO-II
17	TSG-OXYGEN_FLAG		I1	see flag definition below
18	OXYGEN	UMOL/KG	F9.2	Sampled oxygen
19	OXYGEN_FLAG		I1	see flag definition below
20	FLUORESCENCE	RFU	F9.2	Fluorometer C3 (primary)
21	FLUORESCENCE_FLAG		I1	see flag definition below
22	TSG-CHLOROPHYLL-A	MG/CUM	F9.3	Chlorophyll-a estimated from the fluorometer
23	TSG-CHLOROPHYLL-A_FLAG		I1	see flag definition below
24	CHLOROPHYLL-A	MG/CUM	F9.2	Sampled chlorophyll-a
25	CHLOROPHYLL-A_FLAG		I1	see flag definition below
26	PAR	UE/SQM/S	F9.3	Photosynthetically Active Radiation measured at the navigation deck (18 m)
27	PAR_FLAG		I1	see flag definition below

Flag definition

- 1: not corrected
- 2: corrected for the sensor data or acceptable for the sampled data
- 3: questionable measurement
- 4: bad measurement
- 6: interpolated
- 8: low-pass filtered
- 9: missing data (missing value is -999)

Related Information



[Enlarge Image](#)

MR12-05 Leg1

Ship Name: MIRAI
Period: 2012-11-05 - 2012-11-25
Chief Scientist: Katsuro Katsumata (JAMSTEC)
Proposal ▶ WOCE-revisit in the western Pacific and Southern oceans
Title:

Update History

2017-04-11	An observation data was registered.
2015-05-31	An observation data was registered.
2014-04-09	An observation data was registered.

Go to a Cruise Information

Cruise ID:

Go to a Dive Information

Dive ID:

Feeds

SHINSEI MARU
HAKUHO MARU

6K Camera DEEP TOW
6K Sonar DEEP TOW
KM-ROV
POWER GRAB
SAMPLER (SHELL)
POWER GRAB
SAMPLER (CLOW)
BMS

Copyright 2011 Japan Agency for Marine-Earth Science and
Technology



JAMSTEC 国立研究開発法人
海洋研究開発機構
JAPAN AGENCY FOR MARINE-EARTH SCIENCE AND TECHNOLOGY

MIRAI MR12-05 Leg1 Underway Thermosalinograph

Last Modified: 2017-04-11

[ReadMe](#) [Observation Data](#) [Data Format](#)

Cruise ID: [MR12-05 Leg1](#)

Underway Thermosalinograph: Processed (PI)

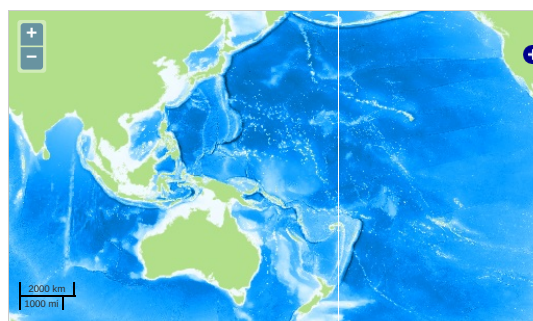
Data Policy: [JAMSTEC](#)

Observation Items: Temperature, Salinity, Dissolved oxygen, Fluorescence, PAR, Chlorophyll

Science Keywords:

OCEANS > OCEAN CHEMISTRY > OXYGEN
OCEANS > OCEAN CHEMISTRY > SALINITY
OCEANS > OCEAN CHEMISTRY > CHLOROPHYLL
OCEANS > SALINITY/DENSITY > SALINITY
OCEANS > OCEAN OPTICS > PHOTOSYNTHETICALLY ACTIVE RADIATION
OCEANS > OCEAN TEMPERATURE > SEA SURFACE TEMPERATURE
OCEANS > OCEAN OPTICS > FLUORESCENCE

Observation Map



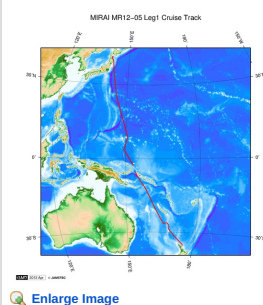
Data List

[Add to Basket](#)

File names

☐ 49NZ20121105_tsg.csv

Related Information



MR12-05 Leg1

Ship Name: MIRAI
Period: 2012-11-05 - 2012-11-25
Chief Scientist: Katsuro Katsumata (JAMSTEC)
Proposal ▶ WOCE-revisit in the western Pacific and Southern oceans
Title:

[Enlarge Image](#)

Update History

2017-04-11 An observation data was registered.
2015-05-31 An observation data was registered.
2014-04-09 An observation data was registered.

JAMSTEC
[Site Policy](#)
[Privacy Policy](#)
[Application for Data and Samples](#)
[Data Policy](#)
[What's New](#)
[Update History](#)
[Feeds](#)

[Lists](#)
[Publication List](#)
[Amount of Public Info.](#)
[Data](#)
[Map Search](#)
[Data Tree](#)
[Detailed Search](#)

[Information of the Ships](#)
NATSUSHIMA
KAIYO
YOKOSUKA
MIRAI
KAIREI
CHIKYU
KAIMEI
SHINSEI MARU
HAKUHO MARU

[Information of the Submersibles](#)
KAIKO
SHINKAI 2000
SHINKAI 6500
DEEP TOW
HYPER-DOLPHIN
URASHIMA
YOKOSUKA DEEP TOW
6K Camera DEEP TOW
6K Sonar DEEP TOW
KM-ROV
POWER GRAB
SAMPLER (SHELL)
POWER GRAB
SAMPLER (CLOW)
BMS

Go to a Cruise Information

Cruise ID:

Go to a Dive Information

Dive ID: