

MIRAI MR09-01 Leg2 Bathymetry (MBES)

Last Modified: 2017-04-11

[ReadMe](#)

[Observation
Data](#)

Cruise ID: [MR09-01 Leg2](#)

Bathymetry (MBES): Processed (PI)

Data Policy: [JAMSTEC](#)

Observation Items: Depth

Science Keywords:

OCEANS > BATHYMETRY/SEAFLOOR TOPOGRAPHY > BATHYMETRY
SOLID EARTH > GEOMORPHOLOGY

Cruise Report

http://www.godac.jamstec.go.jp/catalog/data/doc_catalog/media/MR09-01_leg1-3_all.pdf

[For Using Data](#)

Principal Investigator

Takeshi Matsumoto (University of the Ryukyus)
Masao Nakanishi (Chiba University)

Use Constraints

See [Terms and Conditions](#) about constrain of use.

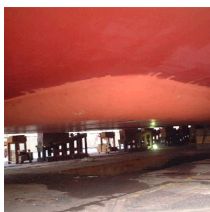
Data Citation

See [Terms and Conditions](#) about data citation.

Instrument

Instrument:

Multi-narrow beam echo sounder (-
MR12-E01)



Overview

Please see the [Data book](#) for details of data.

1. Gridded bathymetry data

MR0901L1_*.Interp.grd

MR0901L2_*.Interp.grd

netCDF formats (see Section 2.1 for more detail)

2. Along track bathymetry data

track_p21.dat

File format:

Column 1: Distance (km)
Column 2: Latitude (deg)
Column 3: Longitude (deg)
Column 4: Depth (m)

3. CTD station location data

dist_p21.dat

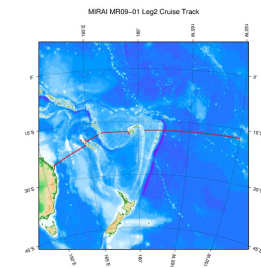
File format:

Column 1: Distance (km)
Column 2: Latitude (deg)
Column 3: Longitude (deg)
Column 4: Station number (WHPID_STNNBR_CASTNO)

4. Contact

Hiroshi Uchida (JAMSTEC)
huchida@jamstec.go.jp

Related Information



 [Enlarge Image](#)

MR09-01 Leg2

Ship Name: MIRAI

Period: 2009-05-21 - 2009-06-19

Chief Scientist: Hiroshi Uchida (JAMSTEC)

Project Name: [POST-WOCE Hydrography, South Pacific Ocean Research Activity 2009]

Update History

2017-04-11	An observation data was registerd.
2012-09-28	An observation data was registerd.

JAMSTEC

[Site Policy](#)
[Privacy Policy](#)
[Application for Data and Samples](#)
[Data Policy](#)

[What's New](#)
[Update History](#)
[Feeds](#)

Lists

[Publication List](#)
[Amount of Public Info.](#)

Data

[Map Search](#)
[Data Tree](#)
[Detailed Search](#)

Information of the Ships

[NATSUSHIMA](#)
[KAIYO](#)
[YOKOSUKA](#)
[MIRAI](#)
[KAIREI](#)
[CHIKYU](#)
[KAIMEI](#)
[SHINSEI MARU](#)
[HAKUHO MARU](#)

Information of the Submersibles

[KAIKO](#)
[SHINKAI 2000](#)
[SHINKAI 6500](#)
[DEEP TOW](#)
[HYPER-DOLPHIN](#)
[URASHIMA](#)
[YOKOSUKA DEEP TOW](#)
[6K Camera DEEP TOW](#)
[6K Sonar DEEP TOW](#)
[KM-ROV](#)
[POWER GRAB](#)
[SAMPLER \(SHELL\)](#)
[POWER GRAB](#)
[SAMPLER \(CLOW\)](#)
[BMS](#)

Go to a Cruise Information

Cruise ID:

Go to a Dive Information

Dive ID:

Copyright 2011 Japan Agency for Marine-Earth Science and Technology



JAMSTEC
JAPAN AGENCY FOR MARINE-EARTH SCIENCE AND TECHNOLOGY

国立研究開発法人
海洋研究開発機構

MIRAI MR09-01 Leg2 Bathymetry (MBES)

Last Modified: 2017-04-11

[ReadMe](#) [Observation Data](#)

Cruise ID: [MR09-01 Leg2](#)

Bathymetry (MBES): Processed (PI)

Data Policy: [JAMSTEC](#)

Observation Items: Depth

Science Keywords:

OCEANS > BATHYMETRY/SEAFLOOR TOPOGRAPHY > BATHYMETRY
SOLID EARTH > GEOMORPHOLOGY

Cruise Report

http://www.godac.jamstec.go.jp/catalog/data/doc_catalog/media/MR09-01_leg1-3_all.pdf

For Using Data

Principal Investigator

Takeshi Matsumoto (University of the Ryukyus)
Masao Nakanishi (Chiba University)

Use Constraints

See [Terms and Conditions](#) about constrain of use.

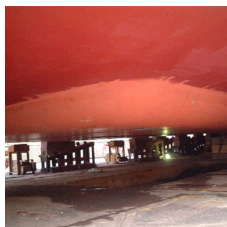
Data Citation

See [Terms and Conditions](#) about data citation.

Instrument

Instrument:

Multi-narrow beam echo sounder (-
MR12-E01)



Overview

Please see the [Data book](#) for details of data.

1. Gridded bathymetry data

MR0901L1_*.Interp.grd

MR0901L2_*.Interp.grd

netCDF formats (see Section 2.1 for more detail)

2. Along track bathymetry data

track_p21.dat

File format:

Column 1: Distance (km)
Column 2: Latitude (deg)
Column 3: Longitude (deg)
Column 4: Depth (m)

3. CTD station location data

dist_p21.dat

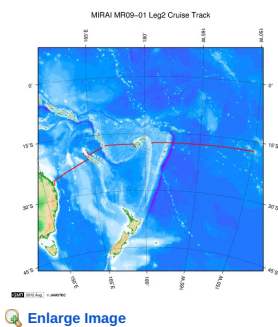
File format:

Column 1: Distance (km)
Column 2: Latitude (deg)
Column 3: Longitude (deg)
Column 4: Station number (WHPID_STNNBR_CASTNO)

4. Contact

Hiroshi Uchida (JAMSTEC)
huchida@jamstec.go.jp

Related Information



MR09-01 Leg2

Ship Name: MIRAI

Period: 2009-05-21 - 2009-06-19

Chief Scientist: Hiroshi Uchida (JAMSTEC)

Project Name: [POST-WOCE Hydrography, South Pacific Ocean Research Activity 2009]

Update History

2017-04-11	An observation data was registered.
2012-09-28	An observation data was registered.

JAMSTEC

[Site Policy](#)

[Privacy Policy](#)

[Application for Data and Samples](#)

[Data Policy](#)

What's New

[Update History](#)

[Feeds](#)

Lists

[Publication List](#)

[Amount of Public Info.](#)

Data

[Map Search](#)

[Data Tree](#)

[Detailed Search](#)

Information of the Ships

[NATSUSHIMA](#)

[KAIYO](#)

[YOKOSUKA](#)

[MIRAI](#)

[KAIREI](#)

[CHIKYU](#)

[KAIMEI](#)

[SHINSEI MARU](#)

[HAKUHO MARU](#)

Information of the Submersibles

[KAIKO](#)

[SHINKAI 2000](#)

[SHINKAI 6500](#)

[DEEP TOW](#)

[HYPER-DOLPHIN](#)

[URASHIMA](#)

[YOKOSUKA DEEP TOW](#)

[6K Camera DEEP TOW](#)

[6K Sonar DEEP TOW](#)

[KM-ROV](#)

[POWER GRAB SAMPLER \(SHELL\)](#)

[POWER GRAB SAMPLER \(CLOW\)](#)

[BMS](#)

Go to a Cruise Information

Cruise ID:

Go to a Dive Information

Dive ID:

Copyright 2011 Japan Agency for Marine-Earth Science and Technology



JAMSTEC

国立研究開発法人
海洋研究開発機構
JAPAN AGENCY FOR MARINE-EARTH SCIENCE AND TECHNOLOGY

MIRAI MR09-01 Leg2 Bathymetry (MBES)

Last Modified: 2017-04-11

[ReadMe](#) [Observation Data](#)

Cruise ID: [MR09-01 Leg2](#)

Bathymetry (MBES): Processed (PI)

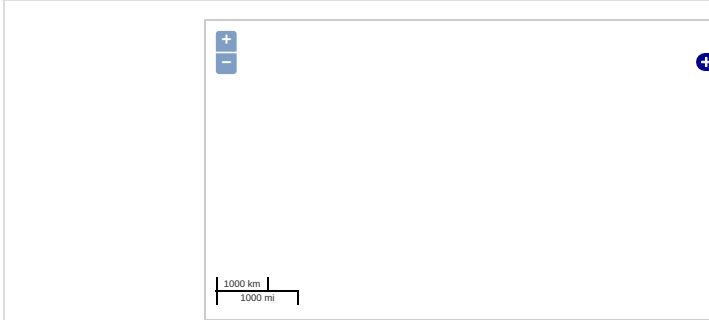
Data Policy: [JAMSTEC](#)

Observation Items: Depth

Science Keywords:

OCEANS > BATHYMETRY/SEAFLOOR TOPOGRAPHY > BATHYMETRY
SOLID EARTH > GEOMORPHOLOGY

Observation Map



... Observation Line ... Navigation ... Observation, Dive Point, Hole

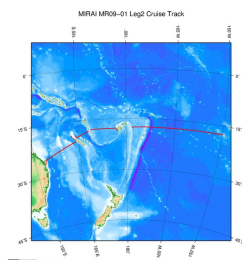
Data List

[Add to Basket](#)

File names

☐ MR09-01_leg2_bathymetry.zip

Related Information



[Enlarge Image](#)

MR09-01 Leg2

Ship Name: MIRAI

Period: 2009-05-21 - 2009-06-19

Chief Scientist: Hiroshi Uchida (JAMSTEC)

Project Name: [POST-WOCE Hydrography, South Pacific Ocean Research Activity 2009]

Update History

2017-04-11	An observation data was registered.
2012-09-28	An observation data was registered.

JAMSTEC

[Site Policy](#)

[Privacy Policy](#)

[Application for Data and Samples](#)

[Data Policy](#)

[What's New](#)

[Update History](#)

[Feeds](#)

Lists

[Publication List](#)

[Amount of Public Info.](#)

Data

[Map Search](#)

[Data Tree](#)

[Detailed Search](#)

Information of the Ships

[NATSUSHIMA](#)

[KAIYO](#)

[YOKOSUKA](#)

[MIRAI](#)

[KAIREI](#)

[CHIKYU](#)

[KAIMEI](#)

[SHINSEI MARU](#)

[HAKUHO MARU](#)

Information of the Submersibles

[KAIKO](#)

[SHINKAI 2000](#)

[SHINKAI 6500](#)

[DEEP TOW](#)

[HYPER-DOLPHIN](#)

[URASHIMA](#)

[YOKOSUKA DEEP TOW](#)

[6K Camera DEEP TOW](#)

[6K Sonar DEEP TOW](#)

[KM-ROV](#)

[POWER GRAB SAMPLER \(SHELL\)](#)

[POWER GRAB SAMPLER \(CLOW\)](#)

[BMS](#)

Go to a Cruise Information

Cruise ID:

Go to a Dive Information

Dive ID:

