

MIRAI MR12-E02 Leg2 CTD, DO and turbidity data off Sanriku

Last Modified: 2014-03-31

[ReadMe](#) [Observation Data](#)

Cruise ID: [MR12-E02 Leg2](#)

CTD, DO and turbidity data off Sanriku : Processed (PI)

Data Policy: [JAMSTEC](#)

Observation Items:

Science Keywords:

Data Information

Vertical profile data of CTD, Turbidity and DO with Deep Tow survey off Sanriku.

Cruise Report

http://www.godac.jamstec.go.jp/catalog/data/doc_catalog/media/MR12-E02_leg2_all.pdf

For Using Data

Principal Investigator

Yasuo Furushima (Institute of Biogeosciences Marine Biodiversity Research Program)

Use Constraints

There is not a special consideration. However, please contact top of a cruise (Katsunori Fjikura) or Y. Furushima when you use data.

Data Citation

See [Terms and Conditions](#) about data citation.

Instrument

Instrument:

CTD with a Deep Tow system,
Compact Optode(JFE Advantech Co.,
Ltd.), Compact-LT(ATU6-CMP, JFE
Advantech Co., Ltd.)

Instrument Information:

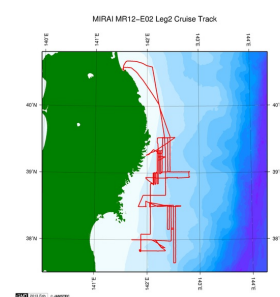


Data Format

File format:Excel file

Related Information

☒ Cruise Data ☐ Dive Data



[Enlarge Image](#)

MR12-E02 Leg2

Ship Name: MIRAI

Period: 2012-03-15 - 2012-03-21

Chief Scientist: Katsunori Fujikura (JAMSTEC)

Project Name: [Tohoku Ecosystem-Associated Marine Sciences (TEAMS)]

Proposal Title: Marine Ecosystems Investigation, Impact by the mega-earthquake (the 2011 Earthquake of the Pacific coast of Tohoku) and Tsunami: For Recovery and Rebuilding of Sanriku Fisheries Activities

Update History

2014-03-31	An observation data was registered.
2013-02-27	An observation data was registered.

JAMSTEC

[Site Policy](#)
[Privacy Policy](#)
[Application for Data and Samples](#)
[Data Policy](#)

[What's New](#)
[Update History](#)
[Feeds](#)

Lists

[Publication List](#)
[Amount of Public Info.](#)

[Data](#)
[Map Search](#)
[Data Tree](#)
[Detailed Search](#)

Information of the Ships

[NATSUSHIMA](#)
[KAIYO](#)
[YOKOSUKA](#)
[MIRAI](#)
[KAIREI](#)
[CHIKYU](#)
[KAIMEI](#)
[SHINSEI MARU](#)
[HAKUHO MARU](#)

Information of the Submersibles

[KAIKO](#)
[SHINKAI 2000](#)
[SHINKAI 6500](#)
[DEEP TOW](#)
[HYPER-DOLPHIN](#)
[URASHIMA](#)
[YOKOSUKA DEEP TOW](#)
[6K Camera DEEP TOW](#)
[6K Sonar DEEP TOW](#)
[KM-ROV](#)
[POWER GRAB SAMPLER \(SHELL\)](#)
[POWER GRAB SAMPLER \(CLOW\)](#)
[BMS](#)

Go to a Cruise Information

Cruise ID:

Go to a Dive Information

Dive ID:



MIRAI MR12-E02 Leg2 CTD, DO and turbidity data off Sanriku

Last Modified: 2014-03-31

[ReadMe](#) [Observation Data](#)

Cruise ID: **MR12-E02 Leg2**

CTD, DO and turbidity data off Sanriku Processed (PI)

Data Policy: [JAMSTEC](#)

Observation Items:

Science Keywords:

Observation Map



... Observation Line ... Navigation ... Observation, Dive Point, Hole

Data List

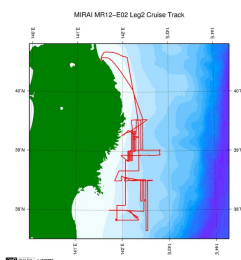
[Add to Basket](#)

File names

MR12-E02_CTD_DO_Turb.xlsx

Related Information

[Cruise Data](#) [Dive Data](#)



[Enlarge Image](#)

MR12-E02 Leg2

Ship Name: MIRAI

Period: 2012-03-15 - 2012-03-21

Chief Scientist: Katsunori Fujikura (JAMSTEC)

Project Name: [Tohoku Ecosystem-Associated Marine Sciences (TEAMS)]

Proposal Marine Ecosystems Investigation, Impact by the mega-earthquake (the 2011 Earthquake of the Pacific coast of Tohoku) and Tsunami: For Recovery and Rebuilding of Sanriku Fisheries Activities

Update History

2014-03-31	An observation data was registered.
2013-02-27	An observation data was registered.

JAMSTEC

[Site Policy](#)
[Privacy Policy](#)
[Application for Data and Samples](#)
[Data Policy](#)
[What's New](#)
[Update History](#)
[Feeds](#)

Lists

[Publication List](#)
[Amount of Public Info.](#)
[Data](#)
[Map Search](#)
[Data Tree](#)
[Detailed Search](#)

Information of the Ships

NATSUSHIMA
KAIYO
YOKOSUKA
MIRAI
KAIREI
CHIKYU
KAIMEI
SHINSEI MARU
HAKUHO MARU

Information of the Submersibles

KAIKO
SHINKAI 2000
SHINKAI 6500
DEEP TOW
HYPER-DOLPHIN
URASHIMA
YOKOSUKA DEEP TOW
6K Camera DEEP TOW
6K Sonar DEEP TOW
KM-ROV
POWER GRAB SAMPLER (SHELL)
POWER GRAB SAMPLER (CLOW)
BMS

Go to a Cruise Information

Cruise ID:

Go to a Dive Information

Dive ID:

