

## MIRAI MR19-02 Dissolved Organic Carbon · Total Dissolved Nitrogen data

Last Modified: 2021-09-30

[ReadMe](#) [Observation Data](#)

Cruise ID: [MR19-02](#)

Dissolved Organic Carbon · Total Dissolved Nitrogen data: Processed (PI)

Data Policy: [JAMSTEC](#)

Observation Items:

Science Keywords:

### Data Information

Results of chemical analysis on seawater collected by a Sea Bird Electronics 36 position carousel equipped 12 liter Niskin X water sample bottles (including CTD data) : dissolved organic carbon, Total dissolved nitrogen

### Cruise Report

[http://www.godac.jamstec.go.jp/catalog/data/doc\\_catalog/media/MR19-02\\_all.pdf](http://www.godac.jamstec.go.jp/catalog/data/doc_catalog/media/MR19-02_all.pdf)

### For Using Data

#### Principal Investigator

Masahide Wakita (JAMSTEC)

#### Use Constraints

Please contact PI (Masahide Wakita: mwakita@jamstec.go.jp)

#### Data Citation

Please contact PI (Masahide Wakita: mwakita@jamstec.go.jp)

### Instrument

Instrument:

High-temperature catalytic oxidation  
method TOC Analyzers

Instrument Information:

Dissolved organic carbon and Total  
dissolved nitrogen :Total Organic  
Carbon Analyzer TOC-V (Shimadzu  
Co. (referred to Cruise Report).



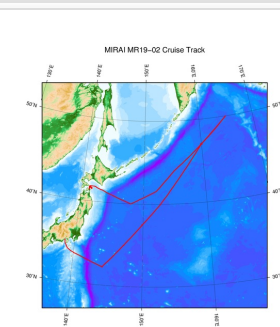
### Sample

Seawater

### Data Format

Excel

### Related Information



[Enlarge Image](#)

### MR19-02

Ship Name: MIRAI

Period: 2019-05-24 - 2019-06-14

Chief Scientist: Tetsuichi Fujiki (JAMSTEC)

Project Name: [Station K2, Station KEO, Station KNOT]

Proposal Title: The observational study to construct and to extend the western Pacific super site network

### Update History

2021-09-30 An observation data was registered.

JAMSTEC  
Site Policy  
Privacy Policy  
Application for Data and Samples  
Data Policy  
What's New  
Update History  
Feeds

Lists  
Publication List  
Amount of Public Info.  
Data  
Map Search  
Data Tree  
Detailed Search

Information of the Ships  
NATSUSHIMA  
KAIYO  
YOKOSUKA  
MIRAI  
KAIREI  
CHIKYU  
KAIMEI  
SHINSEI MARU  
HAKUHO MARU

Information of the Submersibles  
KAIKO  
SHINKAI 2000  
SHINKAI 6500  
DEEP TOW  
HYPER-DOLPHIN  
URASHIMA  
YOKOSUKA DEEP TOW  
6K Camera DEEP TOW  
6K Sonar DEEP TOW

### Go to a Cruise Information

Cruise ID:

### Go to a Dive Information

Dive ID:

KM-ROV  
POWER GRAB SAMPLER  
(SHELL)  
POWER GRAB SAMPLER  
(CLOW)  
BMS

Copyright 2011 Japan Agency for Marine-Earth Science and  
Technology



**JAMSTEC** 国立研究開発法人  
海洋研究開発機構  
JAPAN AGENCY FOR MARINE-EARTH SCIENCE AND TECHNOLOGY

## MIRAI MR19-02 Dissolved Organic Carbon · Total Dissolved Nitrogen data

Last Modified: 2021-09-30

[ReadMe](#) [Observation Data](#)

Cruise ID: [MR19-02](#)

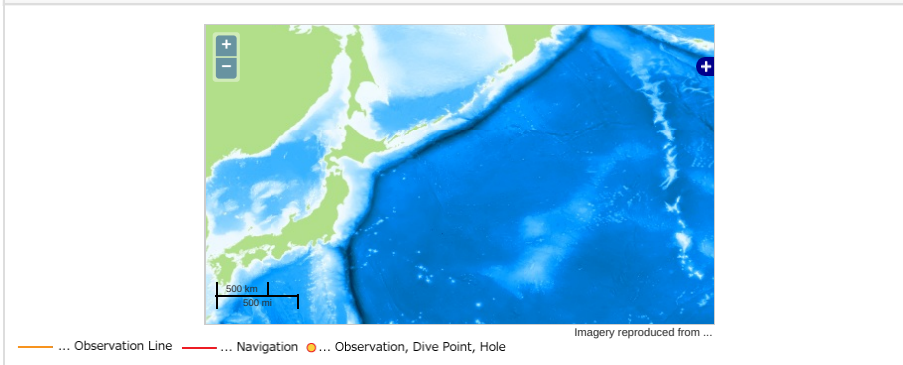
Dissolved Organic Carbon · Total Dissolved Nitrogen data Processed (PI)

Data Policy: [JAMSTEC](#)

Observation Items:

Science Keywords:

### Observation Map



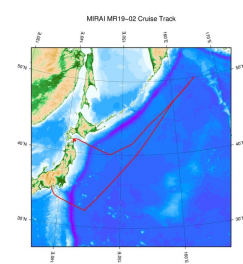
### Data List

[Add to Basket](#)

#### File names

☐ MR19-02\_DOC & TDN.xlsx

### Related Information



[Enlarge Image](#)

#### MR19-02

Ship Name: MIRAI

Period: 2019-05-24 - 2019-06-14

Chief Scientist: Tetsuichi Fujiki (JAMSTEC)

Project Name: [Station K2, Station KEO, Station KNOT]

Proposal The observational study to construct and to extend the western Pacific super site network

Title:

### Update History

2021-09-30 An observation data was registered.

#### JAMSTEC

[Site Policy](#)

[Privacy Policy](#)

[Application for Data and Samples](#)

[Data Policy](#)

[What's New](#)

[Update History](#)

[Feeds](#)

#### Lists

[Publication List](#)

[Amount of Public Info.](#)

[Data](#)

[Map Search](#)

[Data Tree](#)

[Detailed Search](#)

#### Information of the Ships

[NATSUSHIMA](#)

[KAIYO](#)

[YOKOSUKA](#)

[MIRAI](#)

[KAIREI](#)

[CHIKYU](#)

[KAIMEI](#)

[SHINSEI MARU](#)

[HAKUHO MARU](#)

#### Information of the Submersibles

[KAIKO](#)

[SHINKAI 2000](#)

[SHINKAI 6500](#)

[DEEP TOW](#)

[HYPER-DOLPHIN](#)

[URASHIMA](#)

[YOKOSUKA DEEP TOW](#)

[6K Camera DEEP TOW](#)

[6K Sonar DEEP TOW](#)

[KM-ROV](#)

[POWER GRAB SAMPLER \(SHELL\)](#)

[POWER GRAB SAMPLER \(CLOW\)](#)

[BMS](#)

#### Go to a Cruise Information

Cruise ID:

#### Go to a Dive Information

Dive ID:

