

MIRAI MR11-02 Sediment trap data

Last Modified: 2013-03-31

[ReadMe](#) [Observation Data](#)

Cruise ID: [MR11-02](#)

Sediment trap data: Processed (PI)

Data Policy: [JAMSTEC](#)

Observation Items:

Science Keywords:

Data Information

Results of chemical analysis on sinking particles collected by Drifting sediment traps at 60, 100, 150 and 200 m of time-series stations K2 and S1.

Cruise Report

http://www.godac.jamstec.go.jp/catalog/data/doc_catalog/media/MR11-02_all.pdf

For Using Data

Principal Investigator

Makio Honda (JAMSTEC)

Use Constraints

Please contact PI (Makio Honda, hondam@jamstec.go.jp)

Data Citation

Please contact PI (Makio Honda, hondam@jamstec.go.jp)

Instrument

Instrument:

chemical analysis:Inductively Coupled

Plasma-Atomic Emission

Spectrometry (ICP-AES)

Instrument Information:

Inductively Coupled Plasma-Atomic

Emission Spectrometry (ICP-AES):

Perkin-Elmer Optima 3300DV

Instrument:

chemical analysis:elemental analyzer

Instrument Information:

elemental analyzer (Parkin-Elmer

2400)

Instrument:

Particle collector:drifting sediment trap

Instrument Information:

drifting sediment trap (Knauer type)

(Detail is written elsewhere MR11-02

Preliminary Cruise report)



Sample

Sinking particle

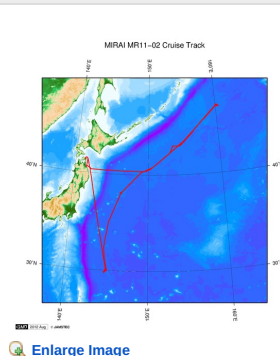
Sample ID

MR1102PK2**4, MR1102PS1**5

Data Format

Excell file

Related Information



MR11-02

Ship Name: MIRAI

Period: 2011-02-11 - 2011-03-09

Chief Scientist: Makio Honda (JAMSTEC)

Project Name: [Station K2, Station S1, Station KEO]

Proposal Title: Studies on the microbial-geochemical processes that regulate the operation of the biological pump in the subarctic and subtropical regions of the western North Pacific

[Enlarge Image](#)

Update History

2013-03-31 An observation data was registered.

HAKUHO MARU

6K Camera DEEP TOW
6K Sonar DEEP TOW
KM-ROV
POWER GRAB SAMPLER
(SHELL)
POWER GRAB SAMPLER
(CLOW)
BMS

Copyright 2011 Japan Agency for Marine-Earth Science and
Technology



JAMSTEC 国立研究開発法人
海洋研究開発機構
JAPAN AGENCY FOR MARINE-EARTH SCIENCE AND TECHNOLOGY

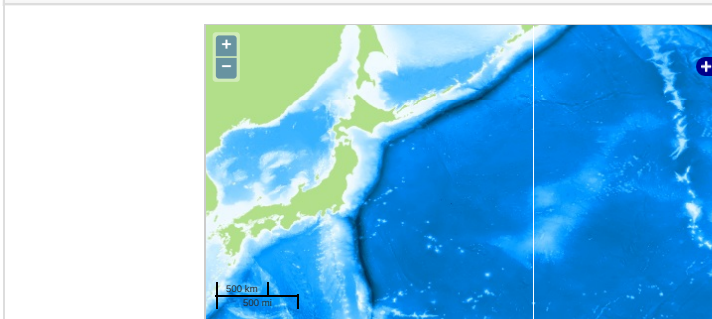
MIRAI MR11-02 Sediment trap data

Last Modified: 2013-03-31

[ReadMe](#) [Observation Data](#)

Cruise ID: **MR11-02**
Sediment trap data: Processed (PI)
Data Policy: [JAMSTEC](#)
Observation Items:
Science Keywords:

Observation Map



... Observation Line ... Navigation ... Observation, Dive Point, Hole

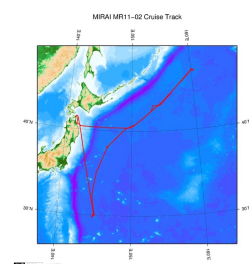
Data List

[Add to Basket](#)

File names

MR11-02_dst.xls

Related Information



[Enlarge Image](#)

MR11-02

Ship Name: MIRAI
Period: 2011-02-11 - 2011-03-09
Chief Scientist: Makio Honda (JAMSTEC)
Project Name: [Station K2, Station S1, Station KEO]
Proposal ▶ Studies on the microbial-geochemical processes that regulate the operation of the biological pump in the subarctic and subtropical regions of the western North Pacific
Title:

Update History

2013-03-31 An observation data was registered.

JAMSTEC

[Site Policy](#)
[Privacy Policy](#)
[Application for Data and Samples](#)
[Data Policy](#)

[What's New](#)
[Update History](#)
[Feeds](#)

Lists

[Publication List](#)
[Amount of Public Info.](#)

[Data](#)
[Map Search](#)
[Data Tree](#)
[Detailed Search](#)

Information of the Ships

[NATSUSHIMA](#)
[KAIYO](#)
[YOKOSUKA](#)
[MIRAI](#)
[KAIREI](#)
[CHIKYU](#)
[KAIMEI](#)
[SHINSEI MARU](#)
[HAKUHO MARU](#)

Information of the Submersibles

[KAIKO](#)
[SHINKAI 2000](#)
[SHINKAI 6500](#)
[DEEP TOW](#)
[HYPER-DOLPHIN](#)
[URASHIMA](#)
[YOKOSUKA DEEP TOW](#)
[6K Camera DEEP TOW](#)
[6K Sonar DEEP TOW](#)
[KM-ROV](#)
[POWER GRAB SAMPLER \(SHELL\)](#)
[POWER GRAB SAMPLER \(CLOW\)](#)
[BMS](#)

Go to a Cruise Information

Cruise ID:

Go to a Dive Information

Dive ID: