

MIRAI MR11-01 Bottle Sampling Water Chemical Analysis

Last Modified: 2017-07-28

[ReadMe](#) [Observation Data](#) [Data Format](#) [Quality Information](#)

Cruise ID: [MR11-01](#)

Bottle Sampling Water Chemical Analysis: Processed (DMO)-QCed

Data Policy: [JAMSTEC](#)

Observation Items: Temperature, Salinity, Dissolved oxygen, Potential temperature, Density

Science Keywords:

OCEANS > OCEAN CHEMISTRY > OXYGEN
OCEANS > OCEAN CHEMISTRY > SALINITY
OCEANS > OCEAN TEMPERATURE > WATER TEMPERATURE
OCEANS > SALINITY/DENSITY > SALINITY
OCEANS > OCEAN TEMPERATURE > POTENTIAL TEMPERATURE

Cruise Report

http://www.godac.jamstec.go.jp/catalog/data/doc_catalog/media/MR11-01_all.pdf

For Using Data

Principal Investigator

CTDTMP : Yuji Kashino (JAMSTEC)
CTDSAL : Yuji Kashino (JAMSTEC)
SALNTY : Yuji Kashino (JAMSTEC)
CTDOXY : Yuji Kashino (JAMSTEC)

Use Constraints

See [Terms and Conditions](#) about constrain of use.

Data Citation

See [Terms and Conditions](#) about data citation.

Instrument

Instrument:

Salinity measurement system



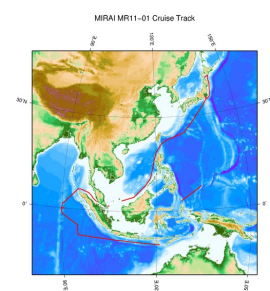
Information on CTD data

- (1) Temperature sensor
Model : SBE03-04/F, Sea-Bird Electronics, Inc.
- (2) Salinity sensor
Model : SBE04-04/0, Sea-Bird Electronics, Inc.
- (3) Pressure sensor
Model : SBE9plus, Sea-Bird Electronics, Inc.
- (4) DO sensor
Model : SBE43, Sea-Bird Electronics, Inc.

Information on Chemical and Biological data

1. Salinity
 - (1) Instruments : Autosol salinometer model 8400B(Guildline Instruments Ltd.)
 - (2) Methods : -
 - (3) Precision : The average and standard deviation of absolute difference were 0.0002 and 0.0002 in salinity, respectively
 - (4) Reference Material/Calibration : IAPSO Standard Sea Water batch P152

Related Information



 [Enlarge Image](#)

[MR11-01](#)

Ship Name: MIRAI
Period: 2010-12-31 - 2011-02-06
Chief Scientist: Yuji Kashino (JAMSTEC)
Project Name: [Tropical Ocean Climate Study (TOCS)]
Proposal ▶ Tropical Ocean Climate Study
Title:

Update History

2017-07-28	An observation data was registerd.
2015-05-29	An observation data was registerd.
2013-03-02	An observation data was registerd.

JAMSTEC

[Site Policy](#)

[Privacy Policy](#)

[Application for Data and Samples](#)

[Data Policy](#)

What's New

[Update History](#)

[Feeds](#)

Lists

[Publication List](#)

[Amount of Public Info.](#)

Data

[Map Search](#)

[Data Tree](#)

[Detailed Search](#)

Information of the Ships

[NATSUSHIMA](#)

[KAIYO](#)

[YOKOSUKA](#)

[MIRAI](#)

[KAIREI](#)

[CHIKYU](#)

[KAIMEI](#)

[SHINSEI MARU](#)

[HAKUHO MARU](#)

Information of the Submersibles

[KAIKO](#)

[SHINKAI 2000](#)

[SHINKAI 6500](#)

[DEEP TOW](#)

[HYPER-DOLPHIN](#)

[URASHIMA](#)

[YOKOSUKA DEEP TOW](#)

[6K Camera DEEP TOW](#)

[6K Sonar DEEP TOW](#)

[KM-ROV](#)

[POWER GRAB SAMPLER \(SHELL\)](#)

[POWER GRAB SAMPLER \(CLOW\)](#)

[BMS](#)

Go to a Cruise Information

Cruise ID:

Go to a Dive Information

Dive ID:

Copyright 2011 Japan Agency for Marine-Earth Science and Technology



JAMSTEC 国立研究開発法人
海洋研究開発機構
JAPAN AGENCY FOR MARINE-EARTH SCIENCE AND TECHNOLOGY

MIRAI MR11-01 Bottle Sampling Water Chemical Analysis

Last Modified: 2017-07-28

[ReadMe](#) [Observation Data](#) [Data Format](#) [Quality Information](#)

Cruise ID: **MR11-01**

Bottle Sampling Water Chemical Analysis: Processed (DMO)-QCed

Data Policy: [JAMSTEC](#)

Exchange Format

Provided in the Exchange Format of CCHDO (CLIVAR and Carbon Hydrographic Data Office).

Please see the following link for details of Exchange Format.

[CCHDO | CLIVAR & Carbon Hydrographic Data Office](#)

Format Information

Column No.	Column Heading Mnemonic	Units Mnemonic	Reporting Precision FORTRAN Format	Comments
1	EXPCODE		A14	Expedition code
2	SECT		A6	For WOCE data the WHP section identifier
3	STNNBR		A6	Station number
4	CASTNO		I3	Cast number
5	SAMPNO		A7	Sample number
6	BTLNBR		A7	Bottle identification number
7	BTLNBR_FLAG_W		I1	Bottle quality flag
8	DATE		I8	Cast date(UTC)
9	TIME	UTC	I4	Cast time (UTC)
10	LATITUDE	DEG	F8.4	LATITUDE
11	LONGITUDE	DEG	F9.4	LONGITUDE
12	DEPTH	M	I5	Reported depth to bottom.
13	CTDDPT	M	F9.1	Depth
14	CTDDPT_FLAG_W		I1	Quality flag for CTD data
15	CTDPRS	DBAR	F9.1	Pressure
16	CTDPRS_FLAG_W		I1	Quality flag for CTD data
17	CTDTMP	ITS-90	F9.4	Temperature
18	CTDTMP_FLAG_W		I1	Quality flag for CTD data
19	CTDSAL	PSS-78	F9.4	CTD Salinity sensor
20	CTDSAL_FLAG_W		I1	Quality flag for CTD data
21	SALNTY	PSS-78	F9.4	Salinity
22	SALNTY_FLAG_W		I1	Quality flags for water samples
23	CTDOXY	UMOL/KG	F9.3	CTD Oxygen sensor
24	CTDOXY_FLAG_W		I1	Quality flag for CTD data
25	THETA	DEG C	F9.4	Potential temperature
26	SIG0	KG/CUM	F9.4	Density

ODV Format

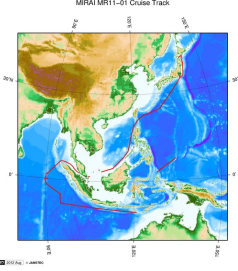
Please see the following link for details of ODV Format and ODV Software.

[Ocean Data View \(ODV\)](#)

Format Information

Column No.	Column Heading	Comments
1	Cruise	Cruise Label
2	Station	Station number_Cast number
3	Type	Station type
4	mon/day/yr	Cast date(UTC)
5	hh:mm	Cast time (UTC)
6	Latitude [degrees_north]	LATITUDE
7	Longitude [degrees_east]	LONGITUDE
8	Bot. Depth [m]	Reported depth to bottom.
9	CTDDPT[M]	Depth
10	QF	Quality flag for CTD data
11	CTDPRS[DBAR]	Pressure
12	QF	Quality flag for CTD data
13	CTDTMP[ITS-90]	Temperature
14	QF	Quality flag for CTD data
15	CTDSAL[PSS-78]	CTD Salinity sensor
16	QF	Quality flag for CTD data
17	SALNTY[PSS-78]	Salinity
18	QF	Quality flags for water samples
19	CTDOXY[UMOL/KG]	CTD Oxygen sensor
20	QF	Quality flag for CTD data
21	THETA[DEG C]	Potential temperature
22	QF	Quality flag for CTD data
23	SIG0[KG/CUM]	Density
24	QF	Quality flag for CTD data
25	SAMPNO	Sample number
26	QF	Bottle quality flag


Related Information



MIRAI MR11-01 Cruise Track

MR11-01

Ship Name: MIRAI
Period: 2010-12-31 - 2011-02-06
Chief Scientist: Yuji Kashino (JAMSTEC)
Project Name: [Tropical Ocean Climate Study (TOCS)]
Proposal ▶ Tropical Ocean Climate Study
Title:

 [Enlarge Image](#)

Update History	
2017-07-28	An observation data was registerd.
2015-05-29	An observation data was registerd.
2013-03-02	An observation data was registerd.

JAMSTEC

[Site Policy](#)

[Privacy Policy](#)

[Application for Data and Samples](#)

[Data Policy](#)

What's New

[Update History](#)

[Feeds](#)

Lists

[Publication List](#)

[Amount of Public Info.](#)

Data

[Map Search](#)

[Data Tree](#)

[Detailed Search](#)

Information of the Ships

[NATSUSHIMA](#)

[KAIYO](#)

[YOKOSUKA](#)

[MIRAI](#)

[KAIREI](#)

[CHIKYU](#)

[KAIMEI](#)

[SHINSEI MARU](#)

[HAKUHO MARU](#)

Information of the Submersibles

[KAIKO](#)

[SHINKAI 2000](#)

[SHINKAI 6500](#)

[DEEP TOW](#)

[HYPER-DOLPHIN](#)

[URASHIMA](#)

[YOKOSUKA DEEP TOW](#)

[6K Camera DEEP TOW](#)

[6K Sonar DEEP TOW](#)

[KM-ROV](#)

[POWER GRAB](#)

[SAMPLER \(SHELL\)](#)

[POWER GRAB SAMPLER \(CLOW\)](#)

[BMS](#)

Go to a Cruise Information

Cruise ID:

Go to a Dive Information

Dive ID:



JAMSTEC 国立研究開発法人
海洋研究開発機構
JAPAN AGENCY FOR MARINE-EARTH SCIENCE AND TECHNOLOGY

Copyright 2011 Japan Agency for Marine-Earth Science and Technology

MIRAI MR11-01 Bottle Sampling Water Chemical Analysis

Last Modified: 2017-07-28

[ReadMe](#) [Observation Data](#) [Data Format](#) [Quality Information](#)

Cruise ID: [MR11-01](#)

Bottle Sampling Water Chemical Analysis: Processed (DMO)-QCed

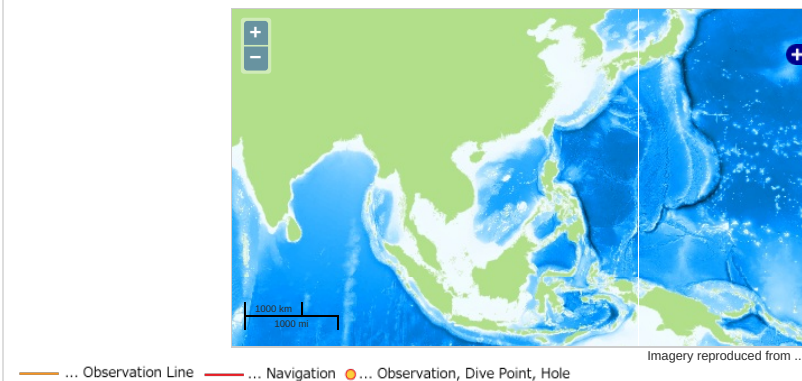
Data Policy: [JAMSTEC](#)

Observation Items: Temperature, Salinity, Dissolved oxygen, Potential temperature, Density

Science Keywords:

OCEANS > OCEAN CHEMISTRY > OXYGEN
OCEANS > OCEAN CHEMISTRY > SALINITY
OCEANS > OCEAN TEMPERATURE > WATER TEMPERATURE
OCEANS > SALINITY/DENSITY > SALINITY
OCEANS > OCEAN TEMPERATURE > POTENTIAL TEMPERATURE

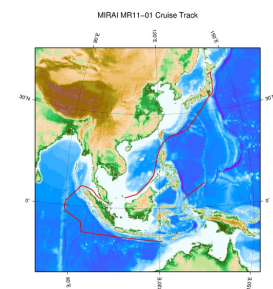
Observation Map



Data List

☐ File names
☐ MR110100_ex_bot.csv
☐ MR110100_odv_bot.txt

Related Information



[Enlarge Image](#)

MR11-01

Ship Name: MIRAI
Period: 2010-12-31 - 2011-02-06
Chief Scientist: Yuji Kashino (JAMSTEC)
Project Name: [Tropical Ocean Climate Study (TOCS)]
Proposal ▶ Tropical Ocean Climate Study
Title:

Update History

2017-07-28	An observation data was registered.
2015-05-29	An observation data was registered.
2013-03-02	An observation data was registered.

JAMSTEC
Site Policy
Privacy Policy
Application for Data and Samples
Data Policy
What's New
Update History
Feeds

Lists
Publication List
Amount of Public Info.
Data
Map Search
Data Tree
Detailed Search

Information of the Ships
NATSUSHIMA
KAIYO
YOKOSUKA
MIRAI
KAIREI
CHIKYU
KAIMEI
SHINSEI MARU
HAKUHO MARU

Information of the Submersibles
KAICO
SHINKAI 2000
SHINKAI 6500
DEEP TOW
HYPER-DOLPHIN
URASHIMA
YOKOSUKA DEEP TOW
6K Camera DEEP TOW
6K Sonar DEEP TOW
KM-ROV
POWER GRAB SAMPLER (SHELL)
POWER GRAB SAMPLER (CLOW)
BMS

Go to a Cruise Information

Cruise ID:

Go to a Dive Information

Dive ID:

